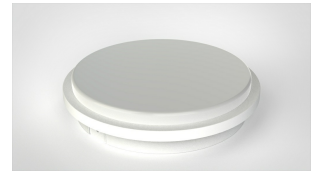




[document_title]



Modèle du produit

87928075

Nom et adresse du fabricant ou de son mandataire

ADEO Services, 135 Rue Sadi Carnot - CS 00001 59790 Ronchin - France

La présente déclaration de conformité est établie sous la seule responsabilité du fabricant

Objet de la déclaration :

Type de produit - Description	BULKHEAD LED INT 1620LM 4000K PCR ROUND WHITE D25CM IP65 INSP EZY
Référence produit	87928075
Industrial Type Design Reference	CL30-0006-RD1010-EU
Marque Produit	INSPIRE
EAN	3276007662702
Codification du numéro de série ou de lot	SSSSSSDDMMYY (SSSSSS:Supplier code;DDMMYY:ETD date;)

L'objet de la déclaration décrit ci-dessus est conforme à la législation d'harmonisation de l'union applicable

Références des normes harmonisées pertinentes appliquées ou des spécifications par Le cas échéant, le nom et le numéro rapport auxquelles la conformité est déclarée de l'organisme notifié

2014_35_EU_LVD (Low Voltage Directive (LVD))

EN IEC 60598-2-1:2021
 EN IEC 60598-1:2021+A11:2022

2014_30_EU EMC (Electromagnetic Compatibility (EMC) Directive)

EN IEC 55015: 2019+A11:2020
 EN IEC 61000-3-2:2019+A1:2021
 EN 61000-3-3: 2013+A1:2019+A2:2021
 EN 61547:2009

2011_65_EU RoHS (Restriction of Hazardous Substances in Electrical and Electronic Equipment (RoHS) Directive)

Directive (EU)2015/863 amending Directive 2011/65/EU
 IEC 62321-1:2013
 IEC 62321-2:2021
 IEC 62321-3-1:2013
 IEC 62321-4:2013+A1:2017

2009_125_EC_ERP_ECOCODESIGN (Establishing a Framework for the Setting of Ecodesign Requirements for Energy-related Products)

(EU) 2019/2020
 (EU) 2021/341
 (EU) 2019/2015
 (EU) 2021/340

Signé par et au nom de LEMOINE ERIC
 International Projects Quality Leader

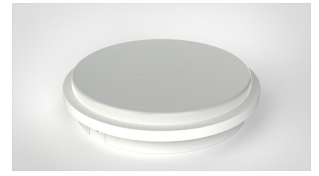
Lieu d'établissement **Ronchin - FRANCE**

Date **16/11/2023**

Eric Lemoine
 ADEO Services SAS
 135 Rue Sadi Carnot
 CS 00001
 59790 RONCHIN



[document_title]



Productmodel

87928075

Deze conformiteitsverklaring wordt verstrekt onder volledige verantwoordelijkheid van de fabricant

ADEO Services, 135 Rue Sadi Carnot - CS 00001 59790 Ronchin - France

Deze conformiteitsverklaring wordt verstrekt onder volledige verantwoordelijkheid van de fabricant

Voorwerp van de verklaring :

Product Type	BULKHEAD LED INT 1620LM 4000K PCR ROUND WHITE D25CM IP65 INSP EZY
Product referentie	87928075
Referentie voor industrieel typeontwerp	CL30-0006-RD1010-EU
Product merk	INSPIRE
EAN	3276007662702
Serienummercodering	SSSSSSDDMMYY (SSSSSS:Supplier code;DDMMYY:ETD date;)

Het hierboven beschreven voorwerp is conform de desbetreffende harmonisatiewetgeving van de Unie

Vermelding van de toegepaste relevante geharmoniseerde normen of van de specificaties waarop de conformiteitsverklaring betrekking heeft

Indien van toepassing de naam en het nummer van het aangemelde laboratorium dat de certificering heeft afgegeven en de verwijzing naar het document

2014_35_EU_LVD (Low Voltage Directive (LVD))

EN IEC 60598-2-1:2021
EN IEC 60598-1:2021+A11:2022

2014_30_EU EMC (Electromagnetic Compatibility (EMC) Directive)

EN IEC 55015: 2019+A11:2020
EN IEC 61000-3-2:2019+A1:2021
EN 61000-3-3: 2013+A1:2019+A2:2021
EN 61547:2009

2011_65_EU RoHS (Restriction of Hazardous Substances in Electrical and Electronic Equipment (RoHS) Directive)

Directive (EU)2015/863 amending Directive 2011/65/EU
IEC 62321-1:2013
IEC 62321-2:2021
IEC 62321-3-1:2013
IEC 62321-4:2013+A1:2017

2009_125_EC_ERP ECODESIGN (Establishing a Framework for the Setting of Ecodesign Requirements for Energy-related Products)

(EU) 2019/2020
(EU) 2021/341
(EU) 2019/2015
(EU) 2021/340

Getekend voor en namens LEMOINE ERIC
International Projects Quality Leader

Plaats Ronchin - FRANCE

datum van uitgifte 16/11/2023

Eric Lemoine
ADEO Services SAS
135 Rue Sadi Carnot
CS 00001
59790 RONCHIN



[document_title]



Modello di prodotto/prodotto

87928075

La presente dichiarazione di conformità è rilasciata sotto la responsabilità esclusiva del fabbricante

ADEO Services, 135 Rue Sadi Carnot - CS 00001 59790 Ronchin - France

La presente dichiarazione di conformità è rilasciata sotto la responsabilità esclusiva del fabbricante

Objeto de la declaración :

Tipologia di prodotto	BULKHEAD LED INT 1620LM 4000K PCR ROUND WHITE D25CM IP65 INSP EZY
Riferimento del prodotto	87928075
Riferimento del Modello industriale di Tipo	CL30-0006-RD1010-EU
Marca del prodotto	INSPIRE
EAN	3276007662702
Codifica del numero di serie	SSSSSSDDMMYY (SSSSSS:Supplier code;DDMMYY:ETD date;)

L'oggetto della dichiarazione di cui sopra è conforme alla pertinente normativa di armonizzazione dell'Unione

Riferimenti alle pertinenti norme armonizzate utilizzate o alle specifiche in relazione alle quali è dichiarata la conformità

Dove applicabile il nome e il numero del laboratorio notificato che ha rilasciato la certificazione e il riferimento al documento

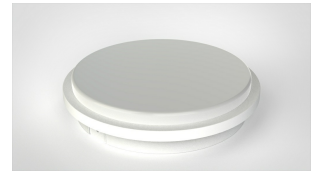
2014_35_EU_LVD (Low Voltage Directive (LVD))**EN IEC 60598-2-1:2021
EN IEC 60598-1:2021+A11:2022****2014_30_EU EMC (Electromagnetic Compatibility (EMC) Directive)****EN IEC 55015: 2019+A11:2020
EN IEC 61000-3-2:2019+A1:2021
EN 61000-3-3: 2013+A1:2019+A2:2021
EN 61347:2009****2011_65_EU RoHS (Restriction of Hazardous Substances in Electrical and Electronic Equipment (RoHS) Directive)****Directive (EU)2015/863 amending Directive
2011/65/EU
IEC 62321-1:2013
IEC 62321-2:2021
IEC 62321-3-1:2013
IEC 62321-4:2013+A1:2017****2009_125_EC ERP ECODESIGN (Establishing a Framework for the Setting of Ecodesign Requirements for Energy-related Products)****(EU) 2019/2020
(EU) 2021/341
(EU) 2019/2015
(EU) 2021/340**

Firmato in vece e per conto di	LEMOINE ERIC International Projects Quality Leader
Luogo	Ronchin - FRANCE
data del rilascio	16/11/2023

**ADEO Services SAS
135 Rue Sadi Carnot
CS 00001
59790 RONCHIN**



[document_title]



Produktmodell

87928075

Name und Adresse des Herstellers oder seinem autorisierten Vertreter

ADEO Services, 135 Rue Sadi Carnot - CS 00001 59790 Ronchin - France

Diese Konformitätserklärung wird im Rahmen der alleinigen Verantwortung des Herstellers abgelegt

Objekt der Erklärung :

Produkttyp - Beschreibung	BULKHEAD LED INT 1620LM 4000K PCR ROUND WHITE D25CM IP65 INSP EZY
Produktreferenz	87928075
Referenz zum industriellen Typdesign	CL30-0006-RD1010-EU
Produktmarke	INSPIRE
EAN	3276007662702
Seriennummer Codierung oder Chargennummer	SSSSSSDDMMYY (SSSSSS:Supplier code;DDMMYY:ETD date;)

Das Objekt der oben beschriebenen Erklärung entspricht der entsprechenden Gesetzgebung der Gewerkschaftsharmonisierung	Verweise auf die relevanten harmonisierten Standards oder Verweise auf die Spezifikationen in Bezug auf die Konformität deklariert werden	Gegebenenfalls der Name und die Anzahl der benachrichtigten Körperteile
--	---	---

2014_35_EU_LVD (Low Voltage Directive (LVD))

EN IEC 60598-2-1:2021
EN IEC 60598-1:2021+A11:2022

2014_30_EU EMC (Electromagnetic Compatibility (EMC) Directive)

EN IEC 55015: 2019+A11:2020
EN IEC 61000-3-2:2019+A1:2021
EN 61000-3-3: 2013+A1:2019+A2:2021
EN 61547:2009

2011_65_EU RoHS (Restriction of Hazardous Substances in Electrical and Electronic Equipment (RoHS) Directive)

Directive (EU)2015/863 amending Directive 2011/65/EU
IEC 62321-1:2013
IEC 62321-2:2021
IEC 62321-3-1:2013
IEC 62321-4:2013+A1:2017

2009_125_EC ERP ECODESIGN (Establishing a Framework for the Setting of Ecodesign Requirements for Energy-related Products)

(EU) 2019/2020
(EU) 2021/341
(EU) 2019/2015
(EU) 2021/340

Für und im Namen von unterschrieben

LEMOINE ERIC

International Projects Quality Leader

Ort

Ronchin - FRANCE

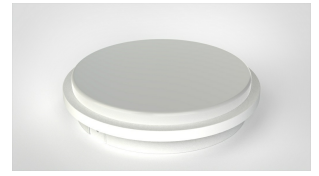
Datum der Ausstellung

16/11/2023

Eric Lemoine
ADEO Services SAS
135 Rue Sadi Carnot
CS 00001
59790 RONCHIN



[document_title]



Model produktu/produkt

87928075

Niniejsza deklaracja zgodności wydana zostaje na wyłączną odpowiedzialność producenta.

ADEO Services, 135 Rue Sadi Carnot - CS 00001 59790 Ronchin - France

Niniejsza deklaracja zgodności wydana zostaje na wyłączną odpowiedzialność producenta.

Przedmiot deklaracji :

Rodzaj produktu	BULKHEAD LED INT 1620LM 4000K PCR ROUND WHITE D25CM IP65 INSP EZY
Referencje produktu	87928075
Model/typ/numer fabryczny	CL30-0006-RD1010-EU
Marka produktu	INSPIRE
EAN	3276007662702
Kodowanie numeru seryjnego	SSSSSSDDMMYY (SSSSSS:Supplier code;DDMMYY:ETD date;)

Wymieniony powyżej przedmiot niniejszej deklaracji jest zgodny z odpowiednimi wymaganiami unijnego prawodawstwa harmonizacyjnego

Odwolania do odpowiednich norm zharmonizowanych, które zastosowano, lub do specyfikacji, w odniesieniu do których deklarowana jest zgodność:

W stosownych przypadkach, notyfikowana nazwa i numer laboratorium, które wydało certyfikat oraz odniesienie do dokumentu

2014_35_EU_LVD (Low Voltage Directive (LVD))**EN IEC 60598-2-1:2021
EN IEC 60598-1:2021+A11:2022****2014_30_EU EMC (Electromagnetic Compatibility (EMC) Directive)****EN IEC 55015: 2019+A11:2020
EN IEC 61000-3-2:2019+A1:2021
EN 61000-3-3: 2013+A1:2019+A2:2021
EN 61547:2009****2011_65_EU RoHS (Restriction of Hazardous Substances in Electrical and Electronic Equipment (RoHS) Directive)****Directive (EU)2015/863 amending Directive 2011/65/EU
IEC 62321-1:2013
IEC 62321-2:2021
IEC 62321-3-1:2013
IEC 62321-4:2013+A1:2017****2009_125_EC_ERP_ECOCODESIGN (Establishing a Framework for the Setting of Ecodesign Requirements for Energy-related Products)****(EU) 2019/2020
(EU) 2021/341
(EU) 2019/2015
(EU) 2021/340**

Podpisano w imieniu **LEMOINE ERIC**
International Projects Quality Leader

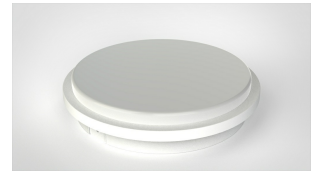
miejsce **Ronchin - FRANCE**

Data wydania **16/11/2023**

ADZO Services SAS
135 Rue Sadi Carnot
CS00001
59790 RONCHIN



[document_title]



Μοντέλο προϊόντος/Προϊόν:

87928075

Επωνυμία και διεύθυνση του κατασκευαστή ή του εξουσιοδοτημένου αντιπροσώπου του

ADEO Services, 135 Rue Sadi Carnot - CS 00001 59790 Ronchin - France

Η παρούσα δήλωση συμμόρφωσης εκδίδεται με αποκλειστική ευθύνη του κατασκευαστή

Στόχος της δήλωσης :

Τύπος Προϊόντος	BULKHEAD LED INT 1620LM 4000K PCR ROUND WHITE D25CM IP65 INSP EZY
Αναφορά προϊόντος	87928075
Αναφορά σχεδιασμού βιομηχανικού τύπου	CL30-0006-RD1010-EU
Μάρκα προϊόντος	INSPIRE
EAN	3276007662702
Κωδικοποίηση σειριακού αριθμού	SSSSSSDDMMYY (SSSSSS:Supplier code;DDMMYY:ETD date;)

Ο στόχος της δήλωσης που περιγράφεται παραπάνω είναι σύμφωνος με τη σχετική ενωσιακή νομοθεσία εναρμόνισης:

Μνεία των σχετικών εναρμονισμένων προτύπων που χρησιμοποιούνται ή μνεία των προδιαγραφών σε σχέση με τις οποίες δηλώνεται η συμμόρφωση:

Όπου ισχύει το γνωστοποιημένο όνομα και τον αριθμό του εργαστηρίου που εξέδωσε την πιστοποίηση και την αναφορά στο έγγραφο

2014_35_EU_LVD (Low Voltage Directive (LVD))

EN IEC 60598-2-1:2021
EN IEC 60598-1:2021+A11:2022

2014_30_EU EMC (Electromagnetic Compatibility (EMC) Directive)

EN IEC 55015: 2019+A11:2020
EN IEC 61000-3-2:2019+A1:2021
EN 61000-3-3: 2013+A1:2019+A2:2021
EN 61547:2009

2011_65_EU RoHS (Restriction of Hazardous Substances in Electrical and Electronic Equipment (RoHS) Directive)

Directive (EU)2015/863 amending Directive 2011/65/EU
IEC 62321-1:2013
IEC 62321-2:2021
IEC 62321-3-1:2013
IEC 62321-4:2013+A1:2017

2009_125_EC ERP ECODESIGN (Establishing a Framework for the Setting of Ecodesign Requirements for Energy-related Products)

(EU) 2019/2020
(EU) 2021/341
(EU) 2019/2015
(EU) 2021/340

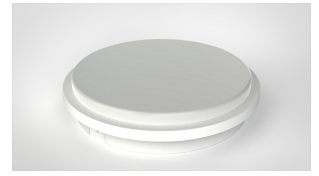
Υπογραφή για και εξ ονόματος
Tόπος
ημερομηνία έκδοσης

LEMOINE ERIC
International Projects Quality Leader
Ronchin - FRANCE
16/11/2023

Eric Lemoine
ADEO Services SAS
135 Rue Sadi Carnot
CS 00001
59790 RONCHIN



[document_title]



Modelo do produto

87928075

Nome e endereço do fabricante ou do seu representante autorizado

ADEO Services, 135 Rue Sadi Carnot - CS 00001 59790 Ronchin - France

Esta declaração de conformidade é emitida sob a exclusiva responsabilidade do fabricante.

Objeto da declaração :

Tipo de producto	BULKHEAD LED INT 1620LM 4000K PCR ROUND WHITE D25CM IP65 INSP EZY
Referência do produto:	87928075
Referência Industrial de Tipo	CL30-0006-RD1010-EU
Marca do produto	INSPIRE
EAN	3276007662702
Codificação do número de série	SSSSSSDDMMYY (SSSSSS:Supplier code;DDMMYY:ETD date;)

O objeto da declaração acima descrita está em conformidade com a legislação de harmonização da União aplicável:

Referências às normas harmonizadas pertinentes utilizadas ou referências às especificações para as quais a conformidade é declarada Quando aplicável o nome e número do laboratório notificado que emitiu a certificação e a referência ao documento

2014_35_EU_LVD (Low Voltage Directive (LVD))

EN IEC 60598-2-1:2021
EN IEC 60598-1:2021+A11:2022

2014_30_EU EMC (Electromagnetic Compatibility (EMC) Directive)

EN IEC 55015: 2019+A11:2020
EN IEC 61000-3-2:2019+A1:2021
EN 61000-3-3: 2013+A1:2019+A2:2021
EN 61547:2009

2011_65_EU RoHS (Restriction of Hazardous Substances in Electrical and Electronic Equipment (RoHS) Directive)

Directive (EU)2015/863 amending Directive 2011/65/EU
IEC 62321-1:2013
IEC 62321-2:2021
IEC 62321-3-1:2013
IEC 62321-4:2013+A1:2017

2009_125_EC ERP ECODESIGN (Establishing a Framework for the Setting of Ecodesign Requirements for Energy-related Products)

(EU) 2019/2020
(EU) 2021/341
(EU) 2019/2015
(EU) 2021/340

Assinado por e em nome de: LEMOINE ERIC
International Projects Quality Leader

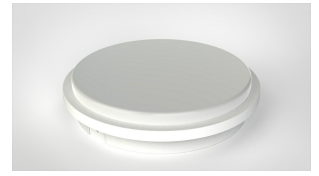
Local: Ronchin - FRANCE

data de emissão: 16/11/2023

Eric Lemoine
ADZO Services SAS
135 Rue Sadi Carnot
CS00001
59790 RONCHIN



[document_title]



Product Model

87928075

Name and address of the manufacturer or his authorised representative

ADEO Services, 135 Rue Sadi Carnot - CS 00001 59790 Ronchin - France

This declaration of conformity is issued under the sole responsibility of the manufacturer

Object of the declaration :

Product Type - Description	BULKHEAD LED INT 1620LM 4000K PCR ROUND WHITE D25CM IP65 INSP EZY
Product Reference	87928075
Industrial Type Design Reference	CL30-0006-RD1010-EU
Product Brand	INSPIRE
EAN	3276007662702
Serial number coding or batch number	SSSSSSDDMMYY (SSSSSS:Supplier code;DDMMYY:ETD date;)

The object of the declaration described above is in conformity with the relevant Union harmonization legislation

References to the relevant harmonised standards used or references to the specifications in relation to which conformity is declared

When applicable, the name and number of notified body number

2014_35_EU_LVD (Low Voltage Directive (LVD))

EN IEC 60598-2-1:2021
EN IEC 60598-1:2021+A11:2022

2014_30_EU EMC (Electromagnetic Compatibility (EMC) Directive)

EN IEC 55015: 2019+A11:2020
EN IEC 61000-3-2:2019+A1:2021
EN 61000-3-3: 2013+A1:2019+A2:2021
EN 61547:2009

2011_65_EU RoHS (Restriction of Hazardous Substances in Electrical and Electronic Equipment (RoHS) Directive)

Directive (EU)2015/863 amending Directive 2011/65/EU
IEC 62321-1:2013
IEC 62321-2:2021
IEC 62321-3-1:2013
IEC 62321-4:2013+A1:2017

2009_125_EC_ERP_ECOCODESIGN (Establishing a Framework for the Setting of Ecodesign Requirements for Energy-related Products)

(EU) 2019/2020
(EU) 2021/344
(EU) 2019/2015
(EU) 2021/340

Signed for and on behalf of LEMOINE ERIC
International Projects Quality Leader

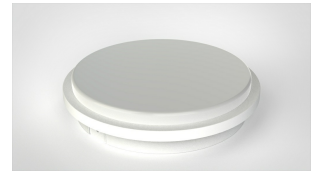
Place Ronchin - FRANCE

Date of issue 16/11/2023

Eric Lemoine
ADEO Services SAS
135 Rue Sadi Carnot
CS 00001
59790 RONCHIN



[document_title]



Modelo del producto

87928075

Nombre y dirección del fabricante o de su representante autorizado

ADEO Services, 135 Rue Sadi Carnot - CS 00001 59790 Ronchin - France

La presente declaración de conformidad se expide bajo la exclusiva responsabilidad del fabricante

Objeto de la declaración :

Tipo de producto	BULKHEAD LED INT 1620LM 4000K PCR ROUND WHITE D25CM IP65 INSP EZY
Referencia del producto	87928075
Referencia Industrial de Tipo	CL30-0006-RD1010-EU
Marca	INSPIRE
EAN	3276007662702
Codificación del número de serie	SSSSSSDDMMYY (SSSSSS:Supplier code;DDMMYY:ETD date;)

El objeto de la declaración descrita anteriormente es conforme a la legislación de armonización pertinente de la Unión

Referencias a las normas armonizadas pertinentes utilizadas, o referencias a las especificaciones respecto a las cuales se declara la conformidad

Cuando corresponda, el nombre y número de laboratorio notificado que haya emitido la certificación y la referencia al documento

2014_35_EU_LVD (Low Voltage Directive (LVD))

EN IEC 60598-2-1:2021
EN IEC 60598-1:2021+A11:2022

2014_30_EU EMC (Electromagnetic Compatibility (EMC) Directive)

EN IEC 55015: 2019+A11:2020
EN IEC 61000-3-2:2019+A1:2021
EN 61000-3-3: 2013+A1:2019+A2:2021
EN 61547:2009

2011_65_EU RoHS (Restriction of Hazardous Substances in Electrical and Electronic Equipment (RoHS) Directive)

Directive (EU)2015/863 amending Directive 2011/65/EU
IEC 62321-1:2013
IEC 62321-2:2013
IEC 62321-3:1:2013
IEC 62321-4:2013+A1:2017

2009_125_EC ERP ECODESIGN (Establishing a Framework for the Setting of Ecodesign Requirements for Energy-related Products)

(EU) 2019/2020
(EU) 2021/341
(EU) 2019/2015
(EU) 2021/340

Firmado por y en nombre de LEMOINE ERIC
International Projects Quality Leader

Lugar Ronchin - FRANCE

Fecha de expedición 16/11/2023

Eric Lemoine
ADEO Services SAS
135 Rue Sadi Carnot
CS 00001
59790 RONCHIN



[document_title]



Modelul de produs/produsul:

87928075

Denumirea și adresa producătorului sau a reprezentantului său autorizat:

ADEO Services, 135 Rue Sadi Carnot - CS 00001 59790 Ronchin - France

Declarația de conformitate este emisă pe răspunderea exclusivă a producătorului

Obiectul declarației :

Tip produs	BULKHEAD LED INT 1620LM 4000K PCR ROUND WHITE D25CM IP65 INSP EZY
Referință produs	87928075
Referință de desing industrial	CL30-0006-RD1010-EU
Marcă a produsului:	INSPIRE
EAN	3276007662702
Cod de numere de serie	SSSSSSDDMMYY (SSSSSS:Supplier code;DDMMYY:ETD date;)

Obiectul declarației descris mai sus este în conformitate cu legislația comunitară relevantă de Referințele standardelor armonizate relevante folosite sau referințele armonizare a Uniunii

specificațiilor în legătură cu care se declară conformitatea:

Unde este cazul numele și numărul de laborator notificat care a eliberat certificarea și trimiterea la document

2014_35_EU_LVD (Low Voltage Directive (LVD))

EN IEC 60598-2-1:2021
EN IEC 60598-1:2021+A11:2022

2014_30_EU EMC (Electromagnetic Compatibility (EMC) Directive)

EN IEC 55015: 2019+A11:2020
EN IEC 61000-3-2:2019+A1:2021
EN 61000-3-3: 2013+A1:2019+A2:2021
EN 61547:2009

2011_65_EU RoHS (Restriction of Hazardous Substances in Electrical and Electronic Equipment (RoHS) Directive)

Directive (EU)2015/863 amending Directive 2011/65/EU
IEC 62321-1:2013
IEC 62321-2:2021
IEC 62321-3-1:2013
IEC 62321-4:2013+A1:2017

2009_125_EC ERP ECODESIGN (Establishing a Framework for the Setting of Ecodesign Requirements for Energy-related Products)

(EU) 2019/2020
(EU) 2021/341
(EU) 2019/2015
(EU) 2021/340

Semnat pentru și în numele	LEMOINE ERIC International Projects Quality Leader
Locație	Ronchin - FRANCE
Datat	16/11/2023

Eric Lemoine
ADEO Services SAS
135 Rue Sadi Carnot
CS 00001
59790 RONCHIN