



Foshan Shunde Advante Electron Ltd.
佛山市顺德区海得曼电器有限公司

ADD.: North Second XinXi Road, LunJiao Industrial Avenue,
LunJiao, Shunde, Foshan, Guangdong, China, 528308
Tel.: +86-757-28613819
Fax.: +86-757-25663105
E-mail: export1@china-advante.com
Website: http://www.globalsources.com/chinaadvante.co
中国广东省佛山市顺德区伦教镇伦教工业大道新燕二路北

Product test report 产品测试报告

Model Description 产品描述		Wireless doorbell AC receiver 无线门铃交流接收器			Order No. / 订单号	/		Target Market 目标市场	Europe 欧洲		Customer 客户	ADEO					
Model number 产品型号		L209			BOM No. / 物料号	Z.03.0128;Z.03.0129		Sample Type 样品种类	试产抽样 / 生产抽样		Sample Qty 样品数量	10pcs					
No.	Subject 项目	Unit 单位	Technical requirement 技术参数要求	Test method / standard 测试方法 / 指标	Sample Test result 工程样品测试结果										Remark 备注		
					1	2	3	4	5	6	7	8	9	10			
31	Power supply 供电	Plug type / 插头类型	/		Check if plug type suitable for target market 检查插头是否适用于目标市场												
32		Battery type & quantity / 电池类型&数量	/		Check if battery type and quantity match with technical data 检查电池类型和数量与技术参数相符												
33		Battery changing / 更换电池	/		Evaluate the easiness to replace the battery on button. 评估更换电池开启按钮的简易性。 button has a polarity to respect ? If yes, do a test with polarity reverse to check if product break or not 电池安装是否分极性, 如有分极性, 反向安装看是否要烧坏产品	Passed	Passed	Passed	Passed	Passed	Passed	Passed	Passed	Passed	Passed	Passed	
34		Battery sheet contact / 电池片接触	/		Check the risk of battery sheet can not contact with battery 检查电池片是否有接触不良的风险	Passed	Passed	Passed	Passed	Passed	Passed	Passed	Passed	Passed	Passed	Passed	
35	Detect & Trigger (Sensor and Magnet only) 感应和触发	Detect range / 感应距离	m		measure the value in equivalent conditions for each tested product 测量每个被测产品在等效条件下的值。												
36	(仅适用于红外感应器和门磁)	Detect Angle / 感应角度	Degree	Vertical 垂直: <input type="checkbox"/> Horizontal 水平: <input type="checkbox"/>	measure the value in equivalent conditions for each tested product 测量每个被测产品在等效条件下的值。												
37	IP level / 防护等级	Damage resistant / 抗损毁	/		establish if the outdoor button design (with backplate/support) is resistant to vandalism (damaged, removed...) 确定室外按钮设计(带背板/支架)是否能抵抗破坏(损坏、拆除...) 1: weak, can be damaged quick & easily without tool 弱, 无需工具即可快速、轻松损坏 2: can be damaged quickly with a hand tool 可以用手动工具快速损坏 3: can be damaged but it takes time without tool 在没有工具的条件下花点时间就可以损坏 4: can be damaged but it takes time (more than 60sec) even with a hand tool 用手												
38		Drop test / 跌落	/		for button: Drop test at 1,2m height 3 times. 发射器: 1.2米高的跌落试验3次。 for wired bell: Drop test at 2m height 3 times. 对于有线电铃: 在2米高处进行3次跌落试验 for wireless bell: Drop test at 0,75m height 10 times. 无线电铃: 在0.75米高度进行10次跌落试验。 Test that product is working correctly afetr each drop. 每次跌落测试产品是否正常工作。	Passed											面壳脱落 (面壳装饰件脱离)

Product test report 产品测试报告

Model Description 产品描述		Wireless doorbell AC receiver 无线门铃交流接收器			Order No. / 订单号	/					Target Market 目标市场	Europe 欧洲		Customer 客户	ADEO	
Model number 产品型号		L209			BOM No. / 物料号	Z.03.0128;Z.03.0129					Sample Type 样品种类	试产抽样 / 生产抽样		Sample Qty 样品数量	10pcs	
No.	Subject 项目	Unit 单位	Technical requirement 技术参数要求	Test method / standard 测试方法 / 指标	Sample Test result 工程样品测试结果										Remark 备注	
					1	2	3	4	5	6	7	8	9	10		
39	Operation Temperature & Humidity / 工作温度&湿度			ensure that product is well operating for all functions on the temperature range (temperature min, temperature max, 23°C or usual T°C) required for the product. At nominal input voltage. 确保产品在产品所需的温度范围（最低温度、最高温度、23°C或通常的T°C）内在额定输入电压下正常运行	Passed	Passed	Passed	Passed	Passed	Passed	Passed	Passed	Passed	Passed	Passed	
40				thermal cycling test : -20° to +80°C - 500 cycles, product not powered. Check product with a functional test and a visual control every 100 hours during the test and at the end of test. This will provoke product ageing to detect any weakness (design, process). Such profile could be used (to be established according to the product need and usage);热循环试验：20°至+80°C-500个循环，产品未通电。在测试期间和测试结束时，每100小时用功能测试和目视控制检查一次产品。这将促使产品老化，以检测任何弱点（设计、工艺）。可使用此配置文件（根据产品需要和使用情况建立）；												
41				test products as example at 85%HR 85°C - 500 hours, product not powered. Check product with a functional test and a visual control every 100 hours during the test and at the end of test. This could simulate a transport by sea in a container. 以85%HR 85°C-500小时为例测试产品，产品未通电。在测试期间和测试结束时，每100小时用功能测试和目视控制检查一次产品。这可以模拟集装箱中的海上运输												

Edit by 编制: Hu Dongyuan

Approved by 批准: Zou Feizhang

Date 日期: 2020-9-10

报告要求:

- 1.所有测试必须注明测试条件，如测试地点，是否外接电源等，如红外感应器必须注明测试环境温度
- 2.测试结果要有具体数据支持，如推算出来的数值，必须注明推算公式
- 3.测试结果要带图片，图片能清楚反映数值，测试设备等要素
- 4.技术参数请按产品规格书填写



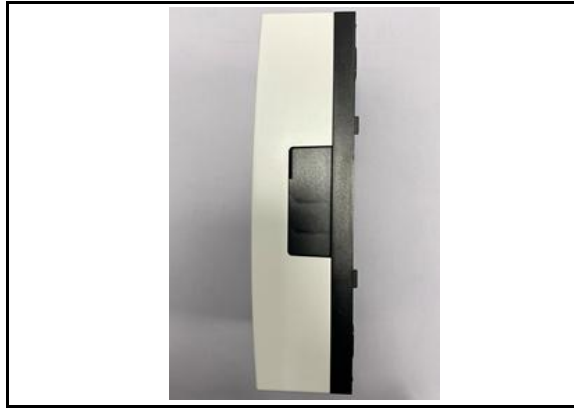
Front side 正面



Back side 背面



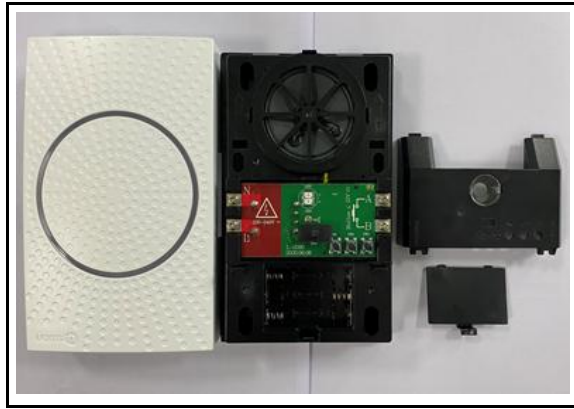
Left side 左侧面



Right side 右侧面



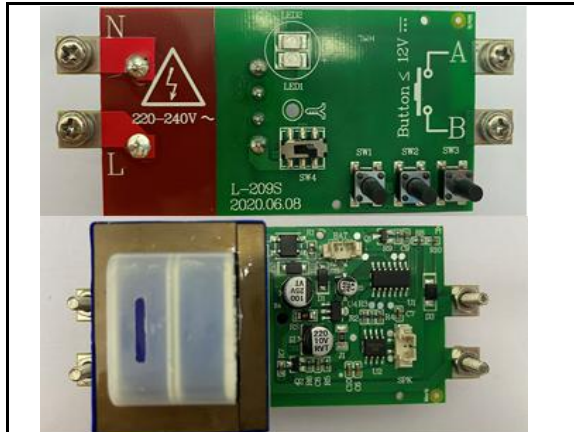
Button / Switch 按键 / 拨位



Internal picture / 内部结构



Plug / Battery compartment / 插头或电池盒



PCB / 电路板两面

Product Weight 产品重量

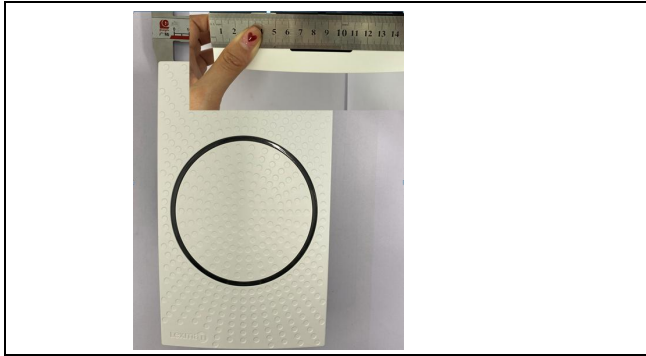


weight: 352 g
样品重量



weight 351 g
样品重量

Product Dimension 产品尺寸



Sample size:	104.87	mm	±
--------------	--------	----	---

样品尺寸



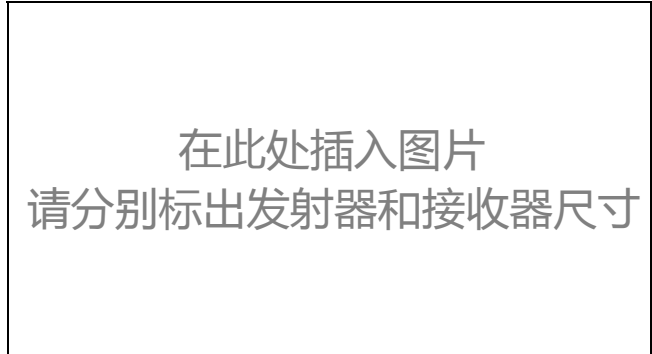
Sample size	169	mm	±
-------------	-----	----	---

样品尺寸



Sample size:	52.33	mm	±
--------------	-------	----	---

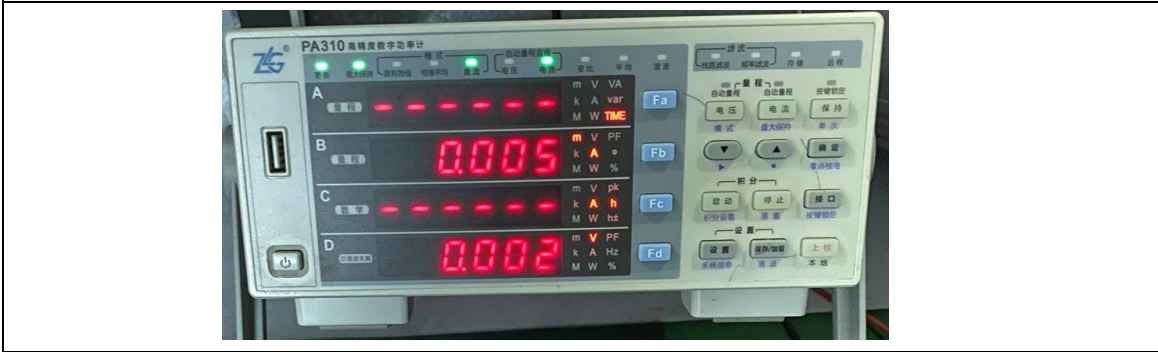
样品尺寸



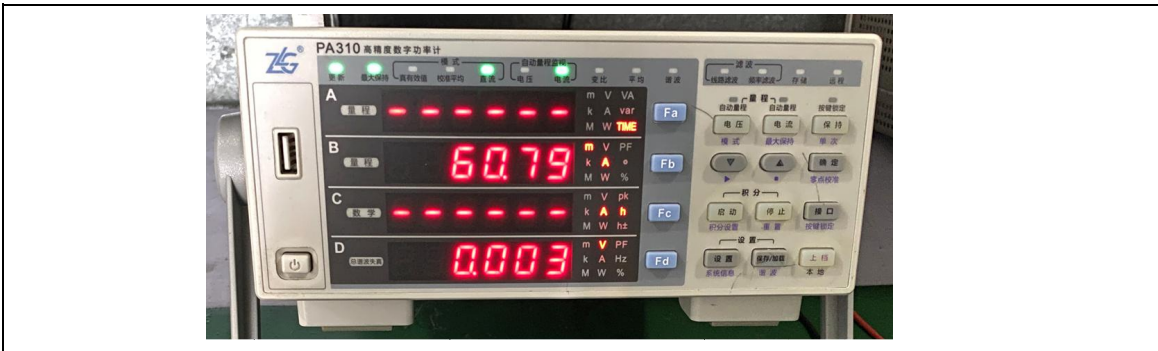
Sample size		mm	±
-------------	--	----	---

样品尺寸

Current 电流

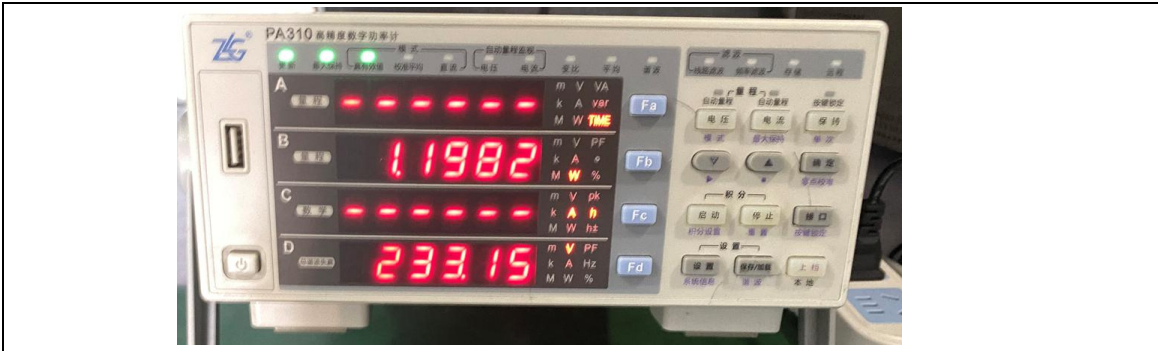


Test condition / 测试条件	待机电流
静态电流 / Standby Current	5uA

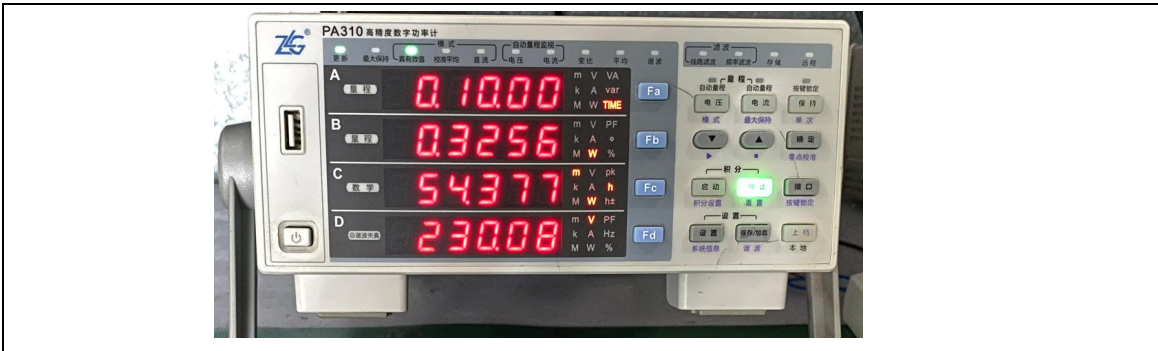


Test condition / 测试条件	工作一次最大时
动态电流 / Dynamic Current	60.8mA

Power 功耗



Test condition / 测试条件	工作一次最大时
Working Power / 工作功率	1.2W

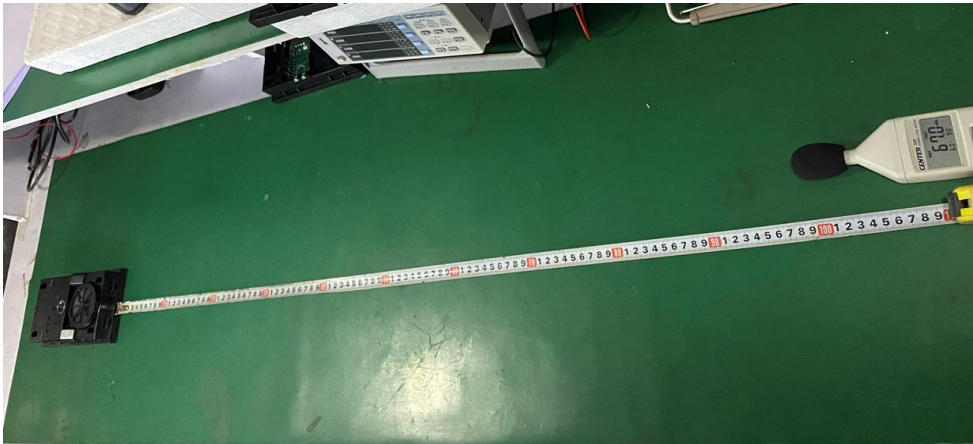


Test condition / 测试条件	待机一个小时的功率
Standby Power / 待机功率	0.32Wh

Sound Volume 音量

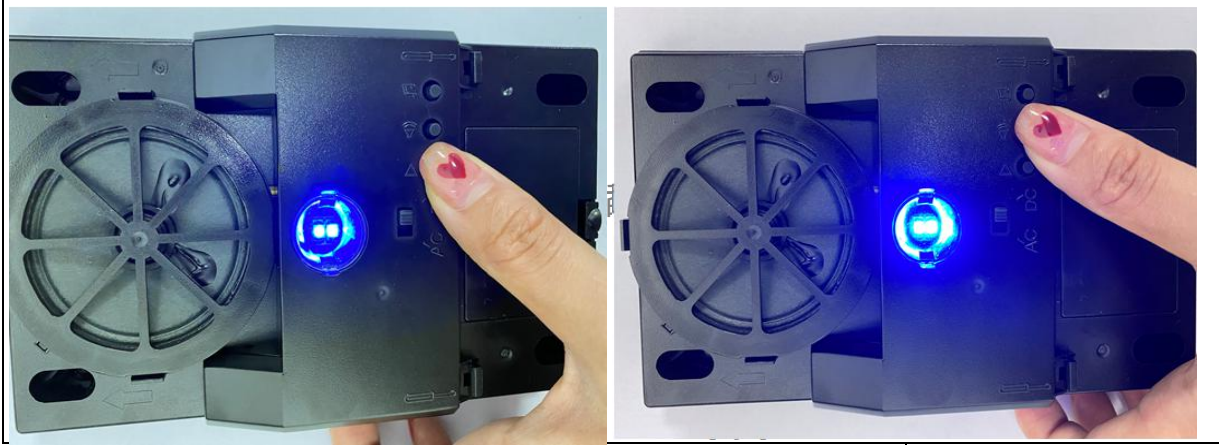


Test condition / 测试条件	1米处测试
Sound Volume max / 最大音量	82.5dB



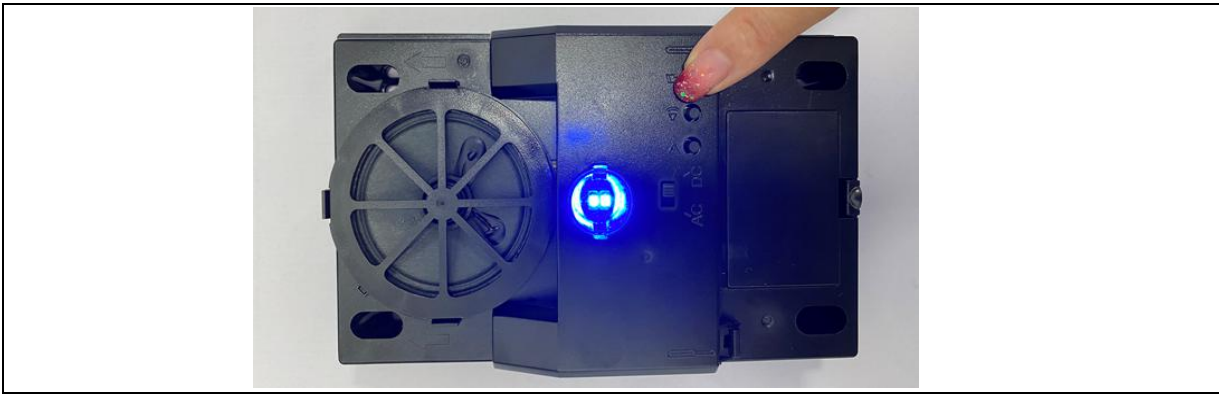
Test condition / 测试条件	1米处测试
Sound Volume min / 最小音量	67dB

Function Test 功能性测试



Button & Switch fuction / 按键&拨位功能

Passed



Ringtone / 曲目

7首

Drop test / 跌落



Test condition / 测试条件	2米高处自由跌落
Product packing after testing / 跌落测试后产品包装是否完好	面盖脱落 (面壳装饰件脱离)
Product function after testing / 跌落测试后产品功能是否完好	Passed