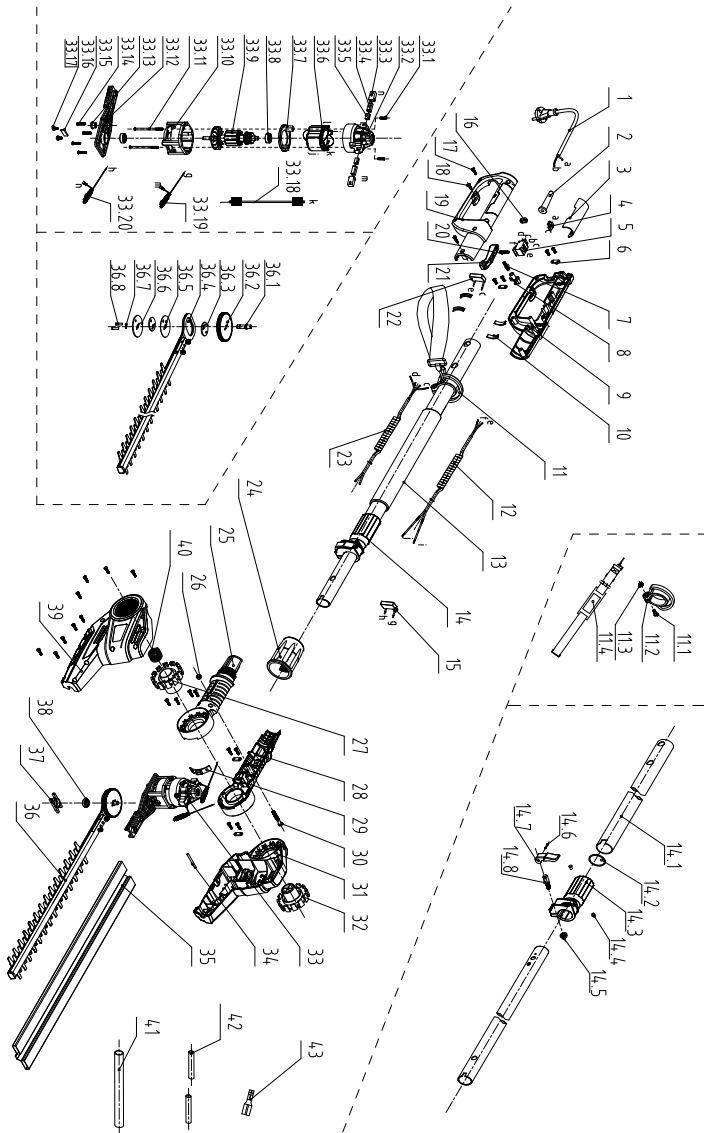


8. EXPLODED VIEW WITH PARTS LIST



8. EXPLODED VIEW WITH PARTS LIST

Part no.	Description	Part no.	Description
1	Cable	32	Button
2	Cable sleeve	33	Motor bracket
3	Soft grip	33.1	Screw
4	Connector	33.2	Carbon brush support
5	Switch	33.3	Carbon brush casing
6	Cable clamp	33.4	Bush
7	Reset spring	33.5	Carbon brush
8	Self-locking button	33.6	Stator
9	Left handle	33.7	Wind deflector
10	Shock pad	33.8	Bearing
11	Belt-ring assay'	33.9	Rotor
11.1	Screw	33.10	End of teeth base
11.2	Belt-ring	33.11	Screw
11.3	Hexagon nut	33.12	Aluminum frame
11.4	Belt	33.13	Oil bearing
12	Spring line	33.14	Screw
13	Tube sleeve	33.15	Gear baffle
14	Telescopic rod components	33.16	Screw
14.1	Telescopic rod components	33.17	Gasket
14.2	Ring	33.18	The connecting line assay'
14.3	Connecting bracket	33.19	inductance
14.4	The positioning pin	33.20	inductance
14.5	Lock nut	34	Cylindrical pin
14.6	Cylindrical pin	35	Guide bar sleeve
14.7	Adjustment button	36	Gear assay'
14.8	Bolt	36.1	Output shaft
15	Capacitance	36.2	Big gear
16	Coil	36.3	Wobbler
17	Screw	36.4	Blade assay'
18	Screw	36.5	Plate
19	Right handle	36.6	Plate
20	Switch spring	36.7	Axis with circlips
21	Switch button	36.8	Pin
22	capacitance	37	Bearings fixed block
23	Spring line	38	Bearing
24	The big tube connector assay'	39	Right housing
25	Right auxiliary handle	40	Spring
26	Self-locking nut	41	Yellow wax tubes
27	Button	42	Heat shrinkable tube
28	Left auxiliary handle	43	Female terminal
29	Gasket		
30	Screw		
31	Left housing		