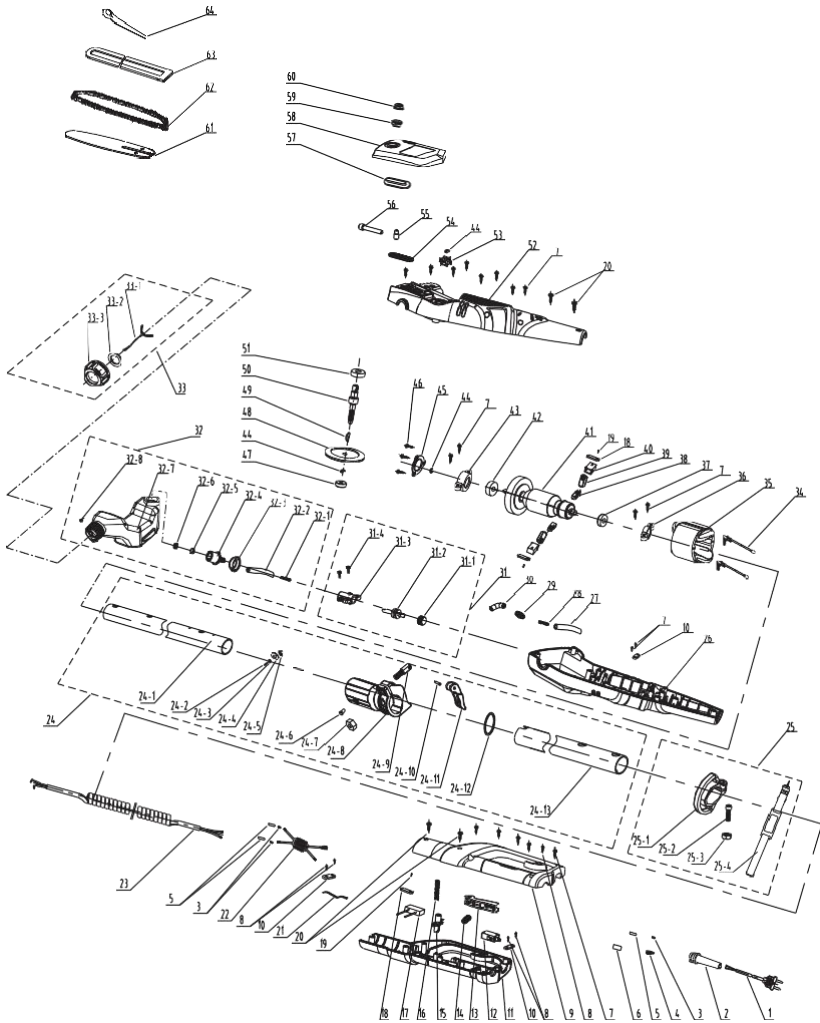


8. EXPLODED VIEW WITH PART LIST



8. EXPLODED VIEW WITH PART LIST

| Exploded no. | Description | Exploded no. | Description | Exploded.no | Description |
|--------------|--------------------------------|--------------|----------------------------|-------------|------------------------|
| 1 | Cable | 25-1 | The belt ring | 45 | Bearing pressure plate |
| 2 | Cable sleeve | 25-2 | Screw | 46 | Screw |
| 3 | Copper strip | 25-3 | Nut | 47 | Bearing |
| 4 | Female Terminal | 25-4 | Belt | 48 | Gear |
| 5 | Heat shrinkable tube | 26 | Left housing | 49 | Woodruff key |
| 6 | Heat shrinkable tube | 27 | Transparent oil tube | 50 | Output shaft |
| 7 | Screw | 28 | Finalize the spring | 51 | Bearing |
| 8 | Screw | 29 | Tubing connector | 52 | Right housing |
| 9 | Right handle | 30 | Rubber connector | 53 | Sprocket |
| 10 | Cable clamp | 31 | Oil pump assy | 54 | Oil-out seal ring |
| 11 | Left handle | 31-1 | Worm gear tooth | 55 | nut |
| 12 | Control switch | 31-2 | Worm gear | 56 | Tighten screw |
| 13 | Switch button | 31-3 | Oil pump | 57 | End cap seal ring |
| 14 | Spring | 31-4 | Screw | 58 | End cover |
| 15 | The self-locking button | 32 | Oil box assy' | 59 | Spindle cover |
| 16 | The self-locking button spring | 32-1 | Finalize the design spring | 60 | Hexagon nut |
| 17 | Capacitance | 32-2 | Transparent oil tube | 62 | Bar |
| 18 | Pressing plate | 32-3 | Oil outlet seal ring | 63 | Chain |
| 19 | Screw | 32-4 | Oil connector | 64 | Guide bar sleeve |
| 20 | Screw | 32-5 | Sponge | 65 | Spanner |
| 21 | Binding wire | 32-6 | End cap | | |
| 22 | Inductance | 32-7 | Oil tank | | |
| 23 | Connection wire | 32-8 | Valve | | |
| 24 | The pipe assay' | 33 | Fuel tank cap assay | | |
| 24-1 | Middle rube | 33-1 | Lost the link | | |
| 24-2 | Screw | 33-2 | The oil cap seal ring | | |
| 24-3 | Washer | 33-3 | The oil cap | | |
| 24-4 | Flat gasket | 34 | Connecting wire | | |
| 24-5 | Six angle lock nut | 35 | Stator | | |
| 24-6 | Fixed pin | 36 | Bearing sleeve | | |
| 24-7 | Hexagon nut | 37 | bearing | | |
| 24-8 | The connection bracket | 38 | Carbon brush | | |
| 24-9 | Piece of adjusting bolt | 39 | Bush | | |
| 24-10 | Cylindrical pin | 40 | Brush shell | | |
| 24-11 | Adjustment of button | 41 | The rotor assay | | |
| 24-12 | Ring | 42 | bearing | | |
| 24-13 | Tube | 43 | Bearing sleeve | | |
| 25 | The belt ring assay' | 44 | E-ring | | |