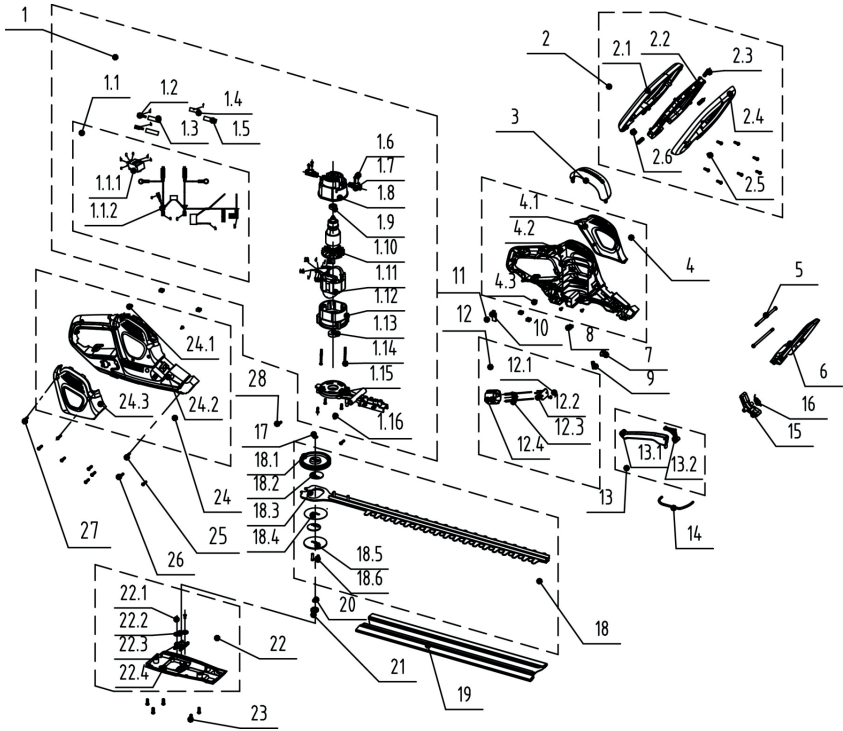


8. EXPLODED VIEW WITH PARTS LIST



8.EXPLODED VIEW WITH PARTS LIST

POS	DESCRIPTION	POS	DESCRIPTION	POS	DESCRIPTION
1	Motor and connection wire assy	4.1	Left cover	18.6	Pin
1.1	Switch and connection wire assy	4.2	Left housing	19	Blade cover
1.1.1	Switch	4.3	Screw	20	Gasket
1.1.2	Connection wire assy	5	Screw	21	Bolt sleeve
1.2	Female terminal	6	Guard	22	Bottom cover assy
1.3	Heat-shrinkable tube	7	Indicator cover	22.1	Screw
1.4	Copper strip	8	Nut	22.2	Gasket
1.5	Heat-shrinkable tube	9	Spring	22.3	Fixing base
1.6	Screw	10	Pressing plate	22.4	Bottom cover
1.7	Carbon brush	11	Scerw	23	Screw
1.8	Carbon brush holder	12	Plug base assy	24	Right housing assy
1.9	Bearing	12.1	Screw	24.1	Screw
1.10	Rotor assy	12.2	Fixing plate	24.2	Right housing
1.11	Stator assy	12.3	Plug and connection wire assy	24.3	Right cover
1.12	Bracket	12.4	Plug base	25	Screw
1.13	Bearing	13	Rear trigger assy	26	Screw
1.14	Screw	13.1	Rear trigger	27	Screw
1.15	Aluminum bracket	13.2	Rear rotational rod	28	Screw
1.16	Screw	14	Steel wire rod		
2	Front handle assy	15	Rotational rod		
2.1	Upper handle	16	Reset spring		
2.2	Front trigger	17	Gasket		
2.3	Spring	18	Blade gear assy		
2.4	Lower handle	18.1	Gear		
2.5	Screw	18.2	Eccentric gear		
2.6	Nut	18.3	Blade assy		
3	Top cover	18.4	Gasket		
4	Left housing assy	18.5	Gasket		