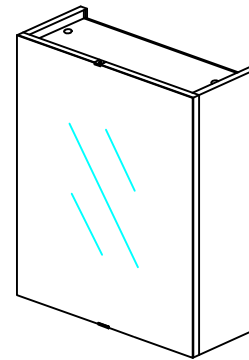
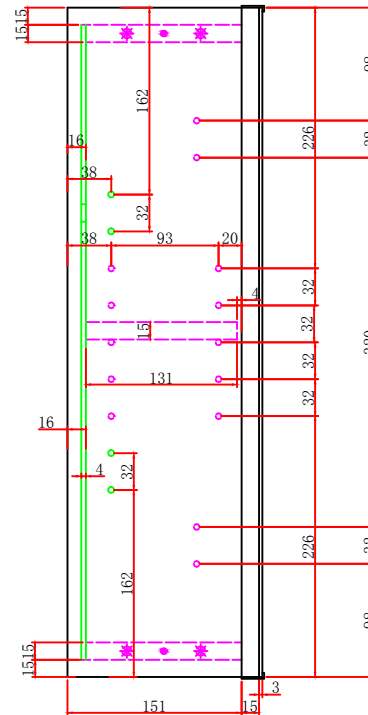
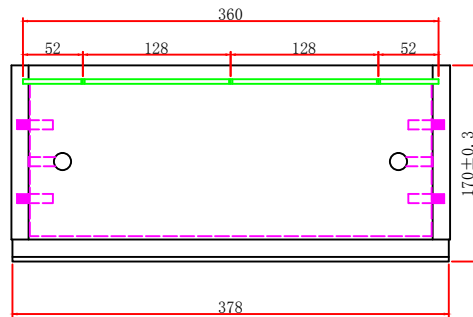
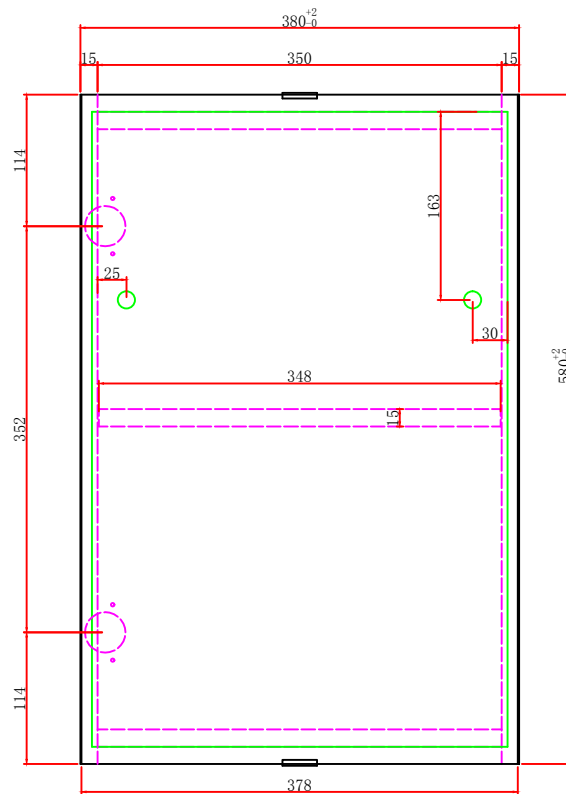


Technical Drawing

Supplier Name	CHANGXING HAPPY FORTUNE SANITARY WARE CO.,LTD
Version No.	HF20171201-1V2.0
Product Range	ESSENTIAL MIRROR CABINET SENSEA_1 DOOR 45

No.	ADEO Ref	EAN Code	No.	ADEO Ref	EAN Code
1	846384	3276000448372	22		
2			23		
3			24		
4			25		
5			26		
6			27		
7			28		
8			29		
9			30		
10			31		
11			32		
12			33		
13			34		
14			35		
15			36		
16			37		
17			38		
18			39		
19			40		
20			41		
21			42		



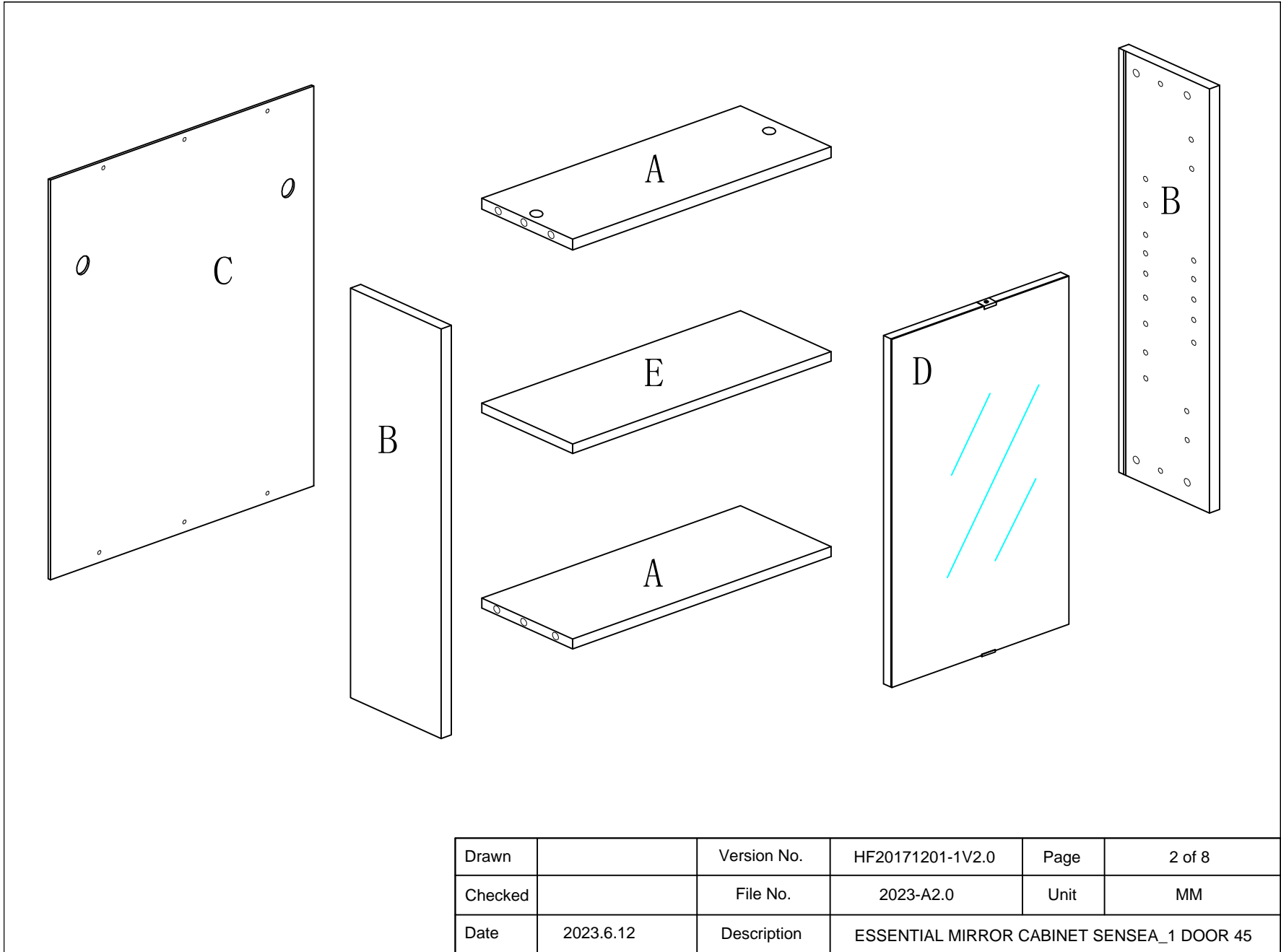
ESSENTIAL MIRROR
CABINET SENSEA_1
DOOR 45

镜柜尺寸 Mirror cabinet size:

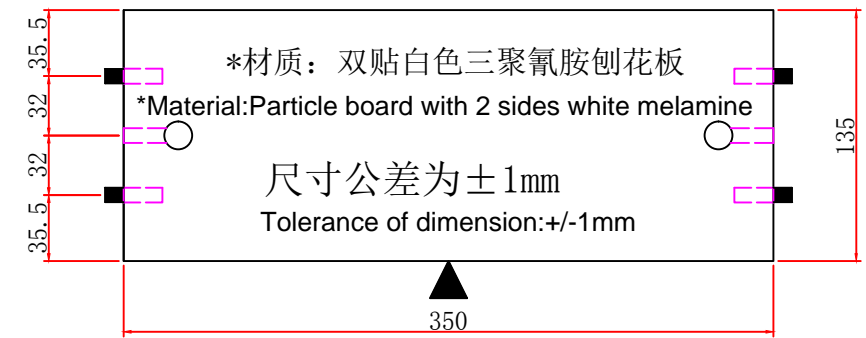
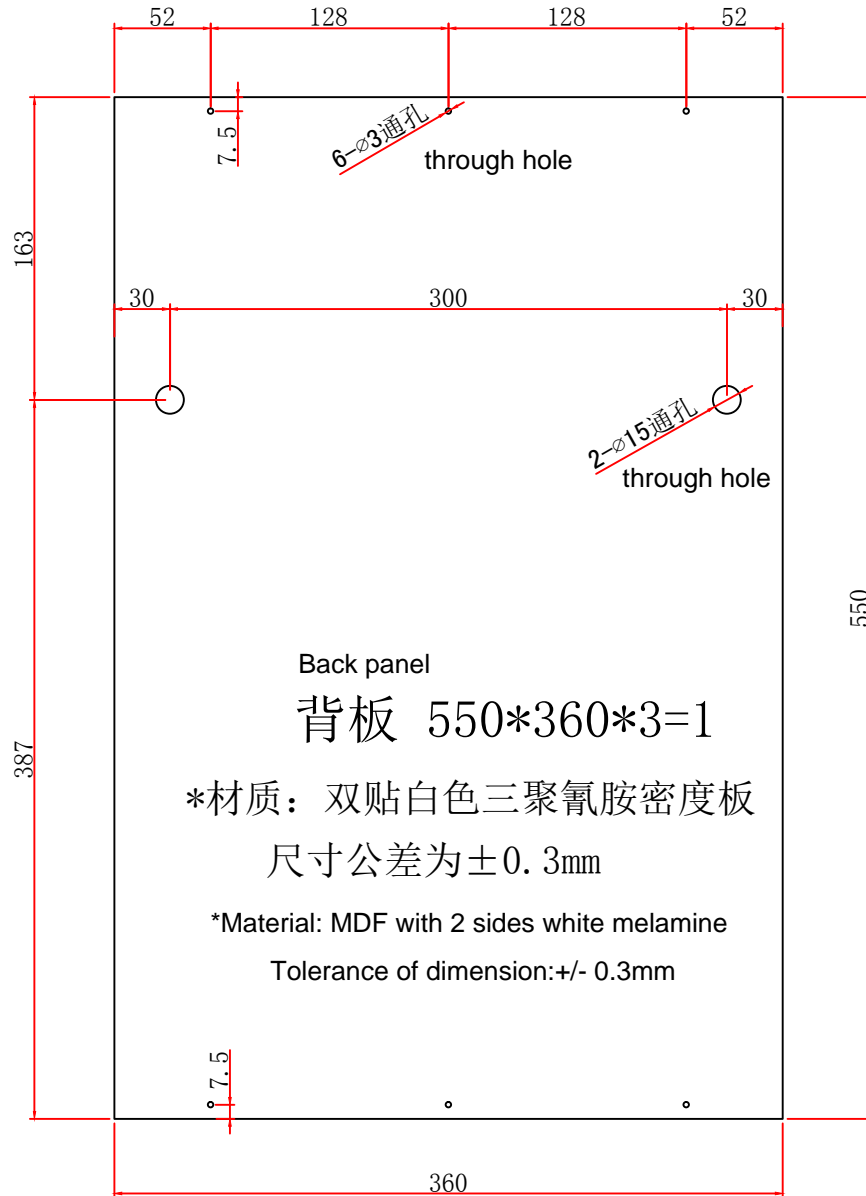
380*170*580mm

公差为 $+2_{-0}$ mm

Tolerance: +2/-0mm



Drawn		Version No.	HF20171201-1V2.0	Page	2 of 8
Checked		File No.	2023-A2.0	Unit	MM
Date	2023.6.12	Description	ESSENTIAL MIRROR CABINET SENSEA_1 DOOR 45		



▲ 代表:封边
means edge banding

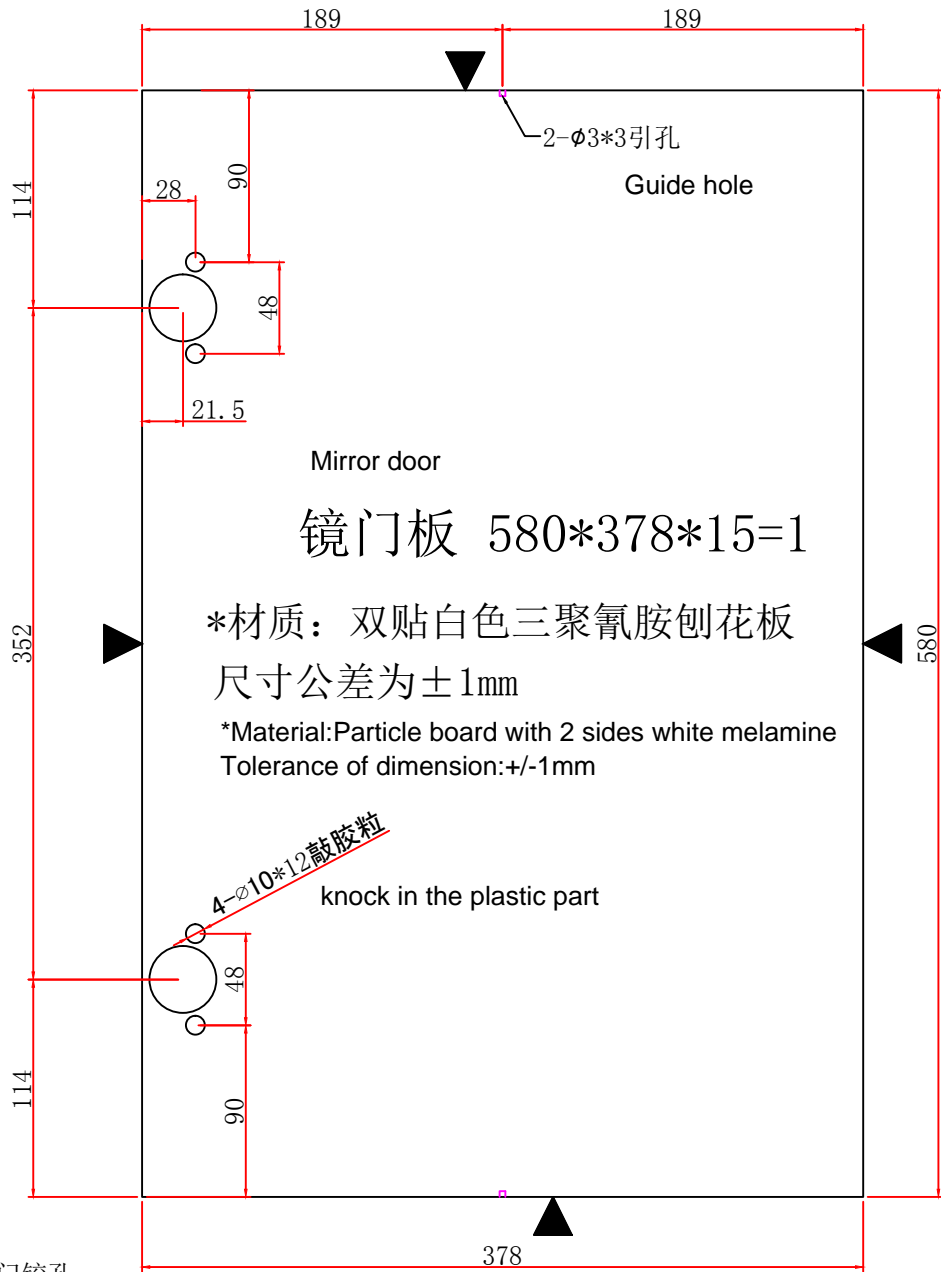
■ means ø8X20木梢孔 wood dowel hole

○ means ø15X12偏心轮孔
eccentric wheel hole

○ means ø8X29三连杆孔
connecting rod hole

顶、底板 350*135*15=2
Top and bottom panel

Drawn		Version No.	HF20171201-1V2.0	Page	4 of 8
Checked		File No.	2023-A2.0	Unit	MM
Date	2023.6.12	Description	ESSENTIAL MIRROR CABINET SENSEA_1 DOOR 45		



Mirror door

镜门板 580*378*15=1

*材质: 双贴白色三聚氰胺刨花板

尺寸公差为±1mm

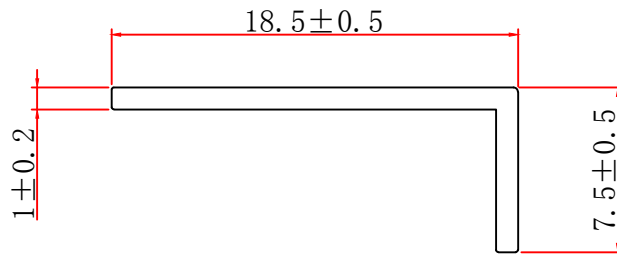
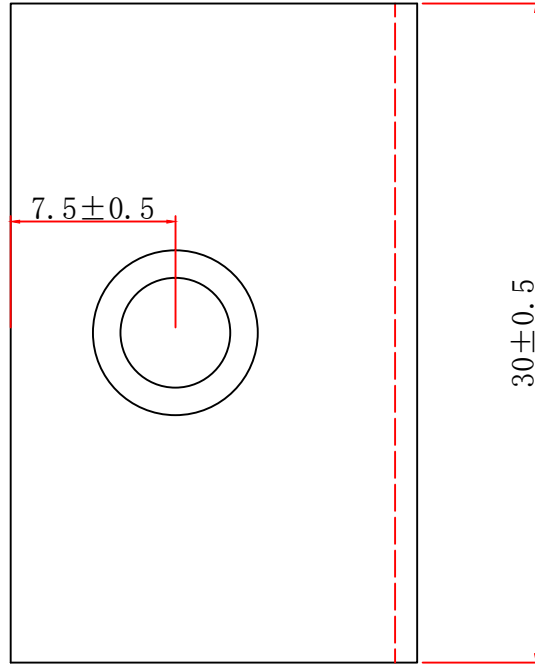
*Material: Particle board with 2 sides white melamine
Tolerance of dimension: +/-1mm

4-ø10*12敲胶粒
knock in the plastic part

○ means ø35X12门铰孔
door hinge hole

▲ 代表:封边
means edge banding

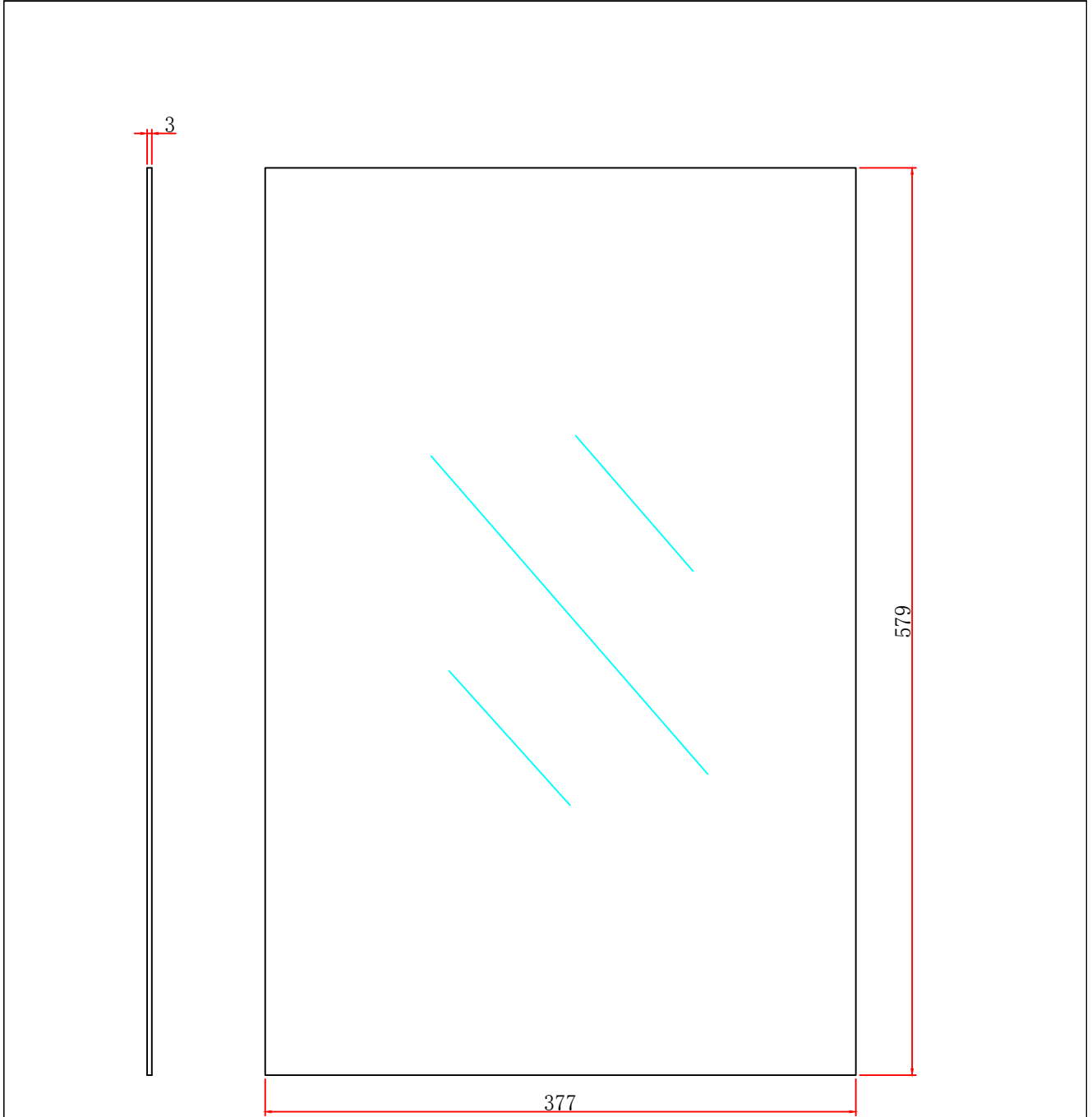
Drawn		Version No.	HF20171201-1V2.0	Page	5 of 8
Checked		File No.	2023-A2.0	Unit	MM
Date	2023.6.12	Description	ESSENTIAL MIRROR CABINET SENSEA_1 DOOR 45		



镜子护角 (材质: 不锈钢)

Mirror protection corner (Material: 304 stainless steel)

Drawn		Version No.	HF20171201-1V2.0	Page	6 of 8
Checked		File No.	2023-A2.0	Unit	MM
Date	2023.6.12	Description	ESSENTIAL MIRROR CABINET SENSEA_1 DOOR 45		



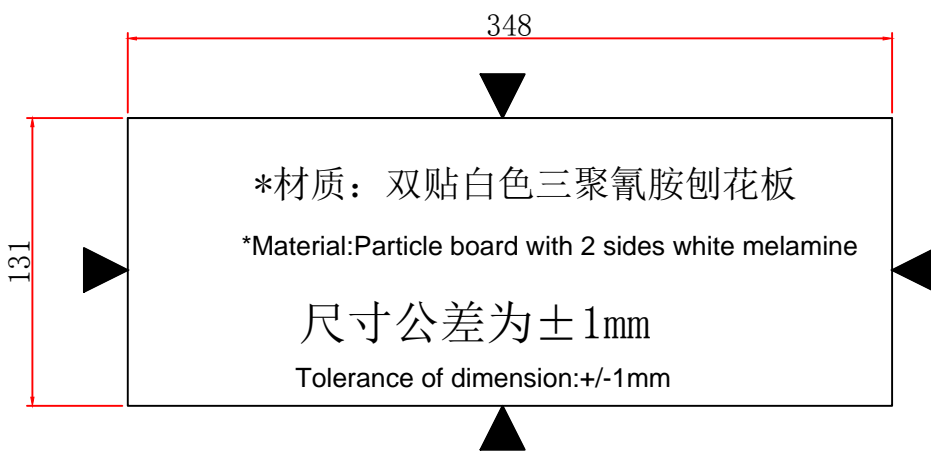
镜片为579*377*3mm的银镜，背面贴防爆膜

尺寸公差为 $^{+0}_{-1}$ mm

Silver mirror with explosion proof film on back

Tolerance of dimension: +0/-1mm

Drawn		Version No.	HF20171201-1V2.0	Page	7 of 8
Checked		File No.	2023-A2.0	Unit	MM
Date	2023.6.12	Description	ESSENTIAL MIRROR CABINET SENSEA_1 DOOR 45		



活动层板 348*131*15mm=1

Adjustable shelf

▲ 代表:封边

means: edge banding

Drawn		Version No.	HF20171201-1V2.0	Page	8 of 8
Checked		File No.	2023-A2.0	Unit	MM
Date	2023.6.12	Description	ESSENTIAL MIRROR CABINET SENSEA_1 DOOR 45		

Technical Drawing Revision History

Supplier Name	CHANGXING HAPPY FORTUNE SANITARY WARE CO.,LTD				
Product Range	ESSENTIAL MIRROR CABINET SENSEA_1 DOOR 45				
Date	Version No.	Increase / Modify/	Revision Point	Reason for Revsion	Confirmed by
7-Aug-2018	HF20171201V1.0				
17-Aug-2018	HF20171201V2.0	Modify	1) On page 3, change the tolerance $\pm 0.3\text{MM}$ to $\pm 1\text{MM}$. 2) On page 3, change the depth of groove 6MM to 6MM with +1-0 tolerance.	1) The production of board can not be controlled within tolerance $\pm 0.3\text{MM}$. 2) There is tolerance during grooving process.	SRIBS
17-Aug-2018	HF20171201V2.0	Modify	1) On page 4, change the tolerance $\pm 0.3\text{MM}$ to $\pm 1\text{MM}$. 2) On page 4, change the hole for wood dowel $\Phi 8 \times 21$ to $\Phi 8 \times 20$.	1) The production of board can not be controlled within tolerance $\pm 0.3\text{MM}$. 2) Adjust the actual size of the hole according to the tolerance range.	SRIBS
17-Aug-2018	HF20171201V2.0	Modify	1) On page 5, change the tolerance $\pm 0.3\text{MM}$ to $\pm 1\text{MM}$. 2) On page 5, change the hole for hinges on door $\Phi 35 \times 12.5$ to $\Phi 35 \times 12$	1) The production of board can not be controlled within tolerance $\pm 0.3\text{MM}$. 2) Adjust the actual size of the hole according to the tolerance range.	SRIBS
17-Aug-2018	HF20171201V2.0	Increase	On page 6, add 1 page for the size of mirror's hard corner.	The size of mirror's hard corner is missing on previous technical drawing.	SRIBS
10-May-2023	HF20171201-1V1.0	Modify	1) On page 1 and 2, change 6mm glass shelf to 15mm PB shelf. 2) On page 1,2 and 3, change 3 position of adjustable shelf height to 5 position of adjustable shelf height.	As per Adeo's request	
12-Jun-2023	HF20171201-1V2.0	Modify	Change the position of shelf support holes	As per Adeo's request	