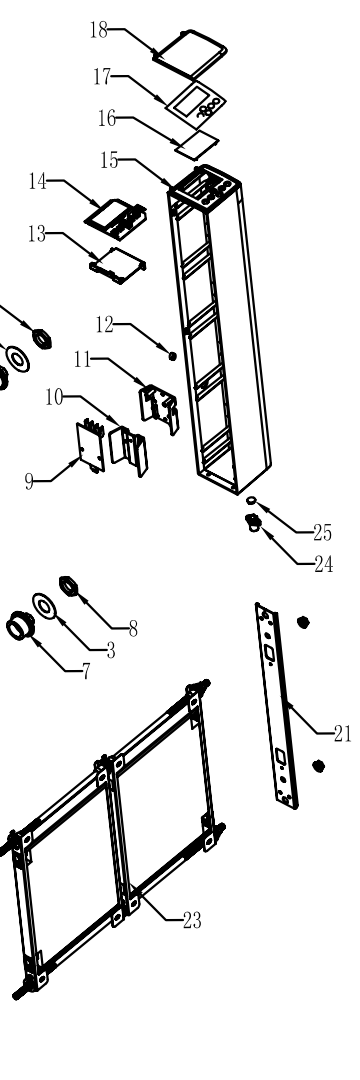
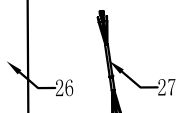
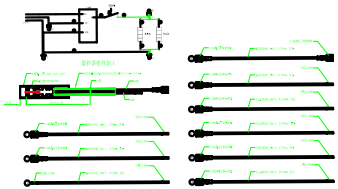


1	2	3	4	5	6	7	8
物料代码	4. 4H. HH1802. BB01	受控	试制	开模	打样		
		V					



30			
29	Upper wall pendant		2
28	Lower wall pendant		2
27	Three core wire	3x1.0mm2	1
26	Internal wiring	Contains temperature control 250v10A TF85	1
25	Temperature head cover		1
24	Temperature head box		1
23	Clay heating element assembly	750W*2	1
22	Non-slip nut	M8	4
21	Clay heating element fixing plate		2
20	Air inlet network		1
19	Right-handed plug with holes		1
18	Control box cover		1
17	Control surface sticker		1
16	Transparent window		1
15	control box		1
14	Circuit board - control board		1
13	Control panel bracket		1
12	Line buckle	6P-4	1
11	Power board bracket		1
10	Aluminum plate heat sink		1
9	Circuit board - power board		1
8	Right-hand nut		2
7	Right-handed plug with holes		2
6	Heat sink assembly	5pieces	1
5	Right side panel		2
4	Left-handed plug		1
3	flat gasket		4
2	left-handed nut		2
1	left side board		1
序号	part name	材料及规格	用量

						无锡禾汇电器科技有限公司			
标记	处数	分区	更改文件号	签名	日期	机型		图名	爆炸图
设计	张基胜		标准化			比例	/	图号	HHAD03-15C
审核	张基胜		工艺			版次	A	画法	
批准			重量			共1张	第1张		