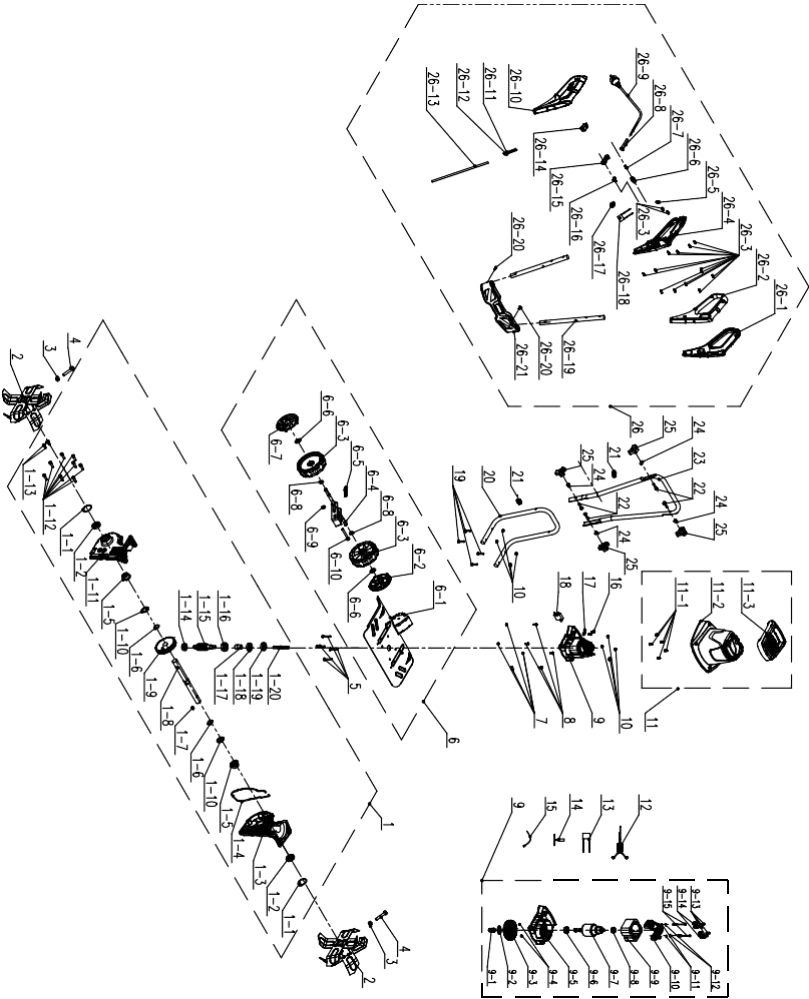


EXPLODED VIEW WITH PART LIST



EXPLODED VIEW WITH PART LIST

POS	PART NUMBER	DESCRIPTION	NUM
1	8440-560310	Worm gear box assembly	1
1-1	8CA-32B	Jump ring	2
1-2	9200-903101-01	Oil seal	2
1-3	8146-560301-01	Left side box of worm gear	1
1-4	242-1046	Plane sealant	1
1-5	8331-560301	Bush	2
1-6	8CC-19B	Jump ring	2
1-7	8205-990101	Round flat key	1
1-8	8081-560302-01	Hob support shaft	1
1-9	8127-560301	Worm gear	1
1-10	8WF-18B01	Flat gasket	2
1-11	8146-560302-01	Right side box body of worm gear	1
1-12	8SACD06-20D	Screw	8
1-13	8SACD06-10D	Screw	2
1-14	8BC-261008-SS	Bearing	1
1-15	8087-560301-01	Worm	1
1-16	8BC-321210-SS	Bearing	1
1-17	8331-560302	Soft shaft sleeve	1
1-18	8200-560301	Oil seal	1
1-19	8202-560302	Felt ring oil seal	1
1-20	8089-560301-01	Soft shaft	1
2	8440-990101-01	Rotary blade assembly	2
3	8NH-08D	Six angle lock nut	2
4	8SFD08-40D	Six angle bolt	2
5	8SJAD06-45D	Pan head screws	4
6	A061003-007-00	panel assembly	1
6-1	8440-560302	Protective panel assembly	1
6-2	8020-514708	Wheel cover	1
6-3	8121-514701	Wheel	1
6-4	8440-560317	Wheel adjustment assembly	1
6-5	8342-560301	Wheel adjusting spring	1
6-6	8201-515101	Retaining ring	1
6-7	8020-514706	Wheel cover	1
6-8	8WF-10D	Flat gasket	2
6-9	8NH-08D	Six angle lock nut	1
6-10	8SFD08-65D	Six angle bolt	1
7	8NH-05D	Six angle lock nut	4
8	8SJAD05-18D	Machine screw	4
9	8440-560306	Motor assembly	1
9-1	8331-560302	Soft shaft sleeve	1
9-2	9202-923006	Flywheel gasket	1
9-3	8403-512001-02	fan	1
9-4	8NH-04D	Six angle lock nut	2
9-5	8292-560301	Motor front bracket	1
9-6	8BC-281208-SSZ3	Bearing	1
9-7	8402-560102	rotor assembly	1
9-8	8BC-240808-SS	Bearing	1
9-9	8405-560102	stator assembly	1

POS	PART NUMBER	DESCRIPTION	NUM
9-10	8292-560302	Motor rear bracket	1
9-11	8321-481002	Flat gasket	2
9-12	8324-481001	Spring washer	2
9-13	8SJAB40-10D	Self tapping screw	4
9-14	8406-560303	Carbon brush	2
9-15	8206-481003	Stator screw	2
10	8NH-06D	angle lock nut	4
11	A061003-008-00	Cover assembly	1
11-1	8SJAB40-18D	Self tapping screw	5
11-2	8024-560101	Cover	1
11-3	8003-560101	Handle	1
12	8415-560303	Magnetic ring	1
13	8416-471401	Capacitance	1
14	8424-560301	Thermal protector	1
15	236-1016	Cable tie	6
16	8SJAB40-18D	Self tapping screw	2
17	8184-302201	Cable clamp	1
18	A061003-005	Electronic assembly	1
19	8206-660501	Cup head square neck bolts	4
20	8061-560301	Lower arm	1
21	8007-512001	Line deduction	2
22	8206-511201-01	square neck bolts	4
23	8061-560302	Intermediate arm	1
24	8341-514201	Plastic Pads	4
25	8313-513701-01	On the knob	4
26	A061003-009-00	Arm assembly	1
26-1	A061003-003-00	Handle	1
26-2	A061003-004-00	Handle	1
26-3	8SJAB40-18D	Self tapping screw	14
26-4	A061003-001-00	Switch box	1
26-5	8184-302201	Cable clamp	1
26-6	8312-436101	Lock off button	1
26-7	8342-481102	Reset spring	1
26-8	8332-516201-01	Cable sheath	1
26-9	8422-560302	Power line	1
26-10	A061003-002-00	Switch box	1
26-11	8413-560301	Brake connecting wire	1
26-12	8413-560302	Electric carbon connecting wire	1
26-13	8422-560301	Cable wire	1
26-14	8042-560301	Microswitch	1
26-15	8312-432101	Switch button	1
26-16	8342-432101	Switch torsion spring	1
26-17	8411-522201	Connector	3
26-18	8416-691501	Capacitance	1
26-19	8061-560303	On the arm	2
26-20	8SJAB50-16D	Self tapping screw	2
26-21	A061003-006-00	panel	1