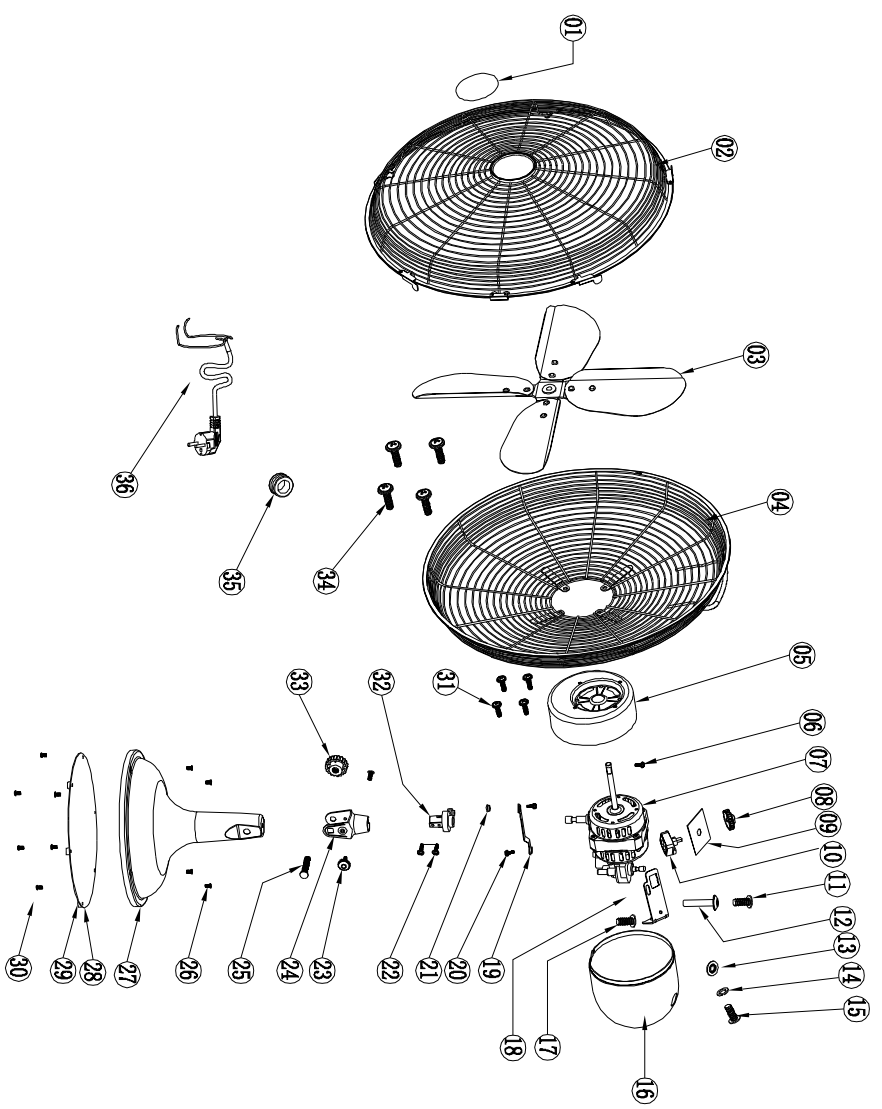


NO	English Part Name	Spec./Material	QTY
01	PVC cover	Iron	1
02	front grill	Iron	1
03	blade	Al	1
04	back grill	Iron	1
05	front cover	Iron	1
06	PM3X10screw	Iron	1
07	motor	pp	1
08	switch knob	pp	1
09	insulation paper		1
10	switch		1
11	PT4X14screw	Iron	1
12	swing control	pp	1
13	φ4Cr17Ni2Si	Iron	1
14	φ4Spring meson	Iron	1
15	PM4.X12screw	Iron	1
16	back cover	Iron	1
17	T44×8 screw	Iron	2
18	tail bracket	Iron	1
19	link	Iron	1
20	PW4.4×10screw	Iron	2
21	link trapping	pp	1
22	PM4.X4 screw	Iron	2
23	M5hand screw	Iron	1
24	neck	Iron	1
25	M8 square neck screw	Iron	1
26	KM4.X8 screw	Iron	4
27	Big body	Iron	1
28	base	Iron	1
29	PVC FOOT	PVC	6
30	TM4×8 screw	Iron	6
31	PM4×8 screw	Iron	4
32	neck plug	pp	1
33	M8 nut knob	Iron	1
34	PM5×8 screw	Iron	4
35	Line buckle		1
36	electric wire		1



DIM		公差	项目名称	TX-1201GD	产品编号	
	精度	0.0	零件编号		材料	
6-30	±0.10	±0.08	绘图日期	2017/09/05	表面处理	
	±0.15	±0.10				
30-120	±0.20	±0.15	Techn Electric Appliance Manufacture Co., Ltd 江门市蓬江区德信电器有限公司			
		±0.10				
绘图: Zhang ming		核对:	零件名称		TX-1201GD_Explod	数量
图号: WI-DR1201GD-001		版本: A0	比例: 1:1		单位: MM	1

A B C D 1 2 3 4 5 6