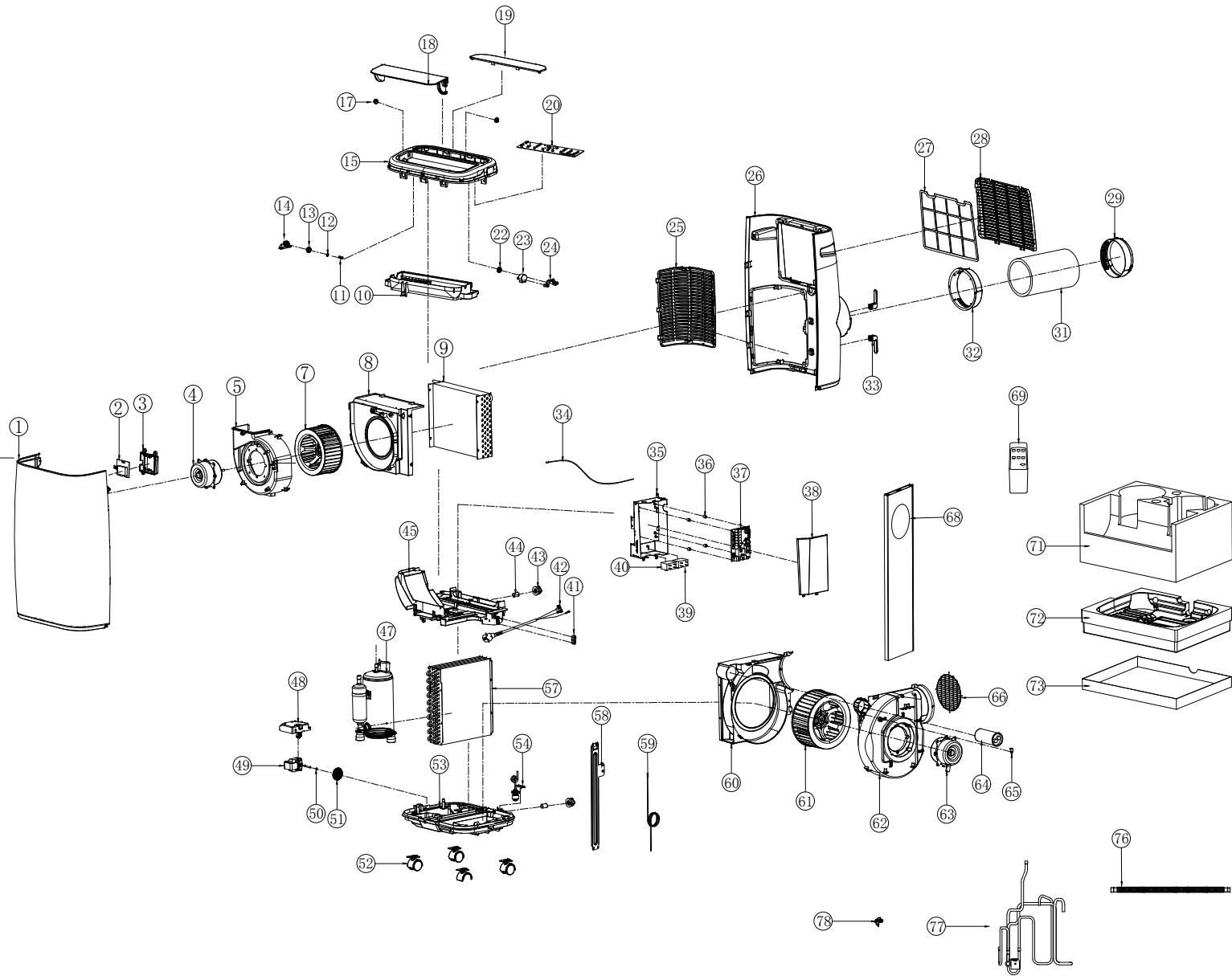


# A018D Schematic diagram of moving air conditioning parts



38	Electric Box Cover		
37	Power PCB		
36	Isolate Support	78	Temp Sensor Support
35	Electric Box	77	4-way Valve Assembly
34	Temp. Sensor	76	Water Pipe
33	Wrapping Post		
32	Housing Adaptor	73	Bottom bracket
31	Exhaust Hose	72	Low Package Foam
		71	Up Package Foam
29	Window Connector	69	Remote control
28	Up Grille	68	Window Kit
27	Air Filter	66	Air Outlet Grille
26	Rear Panel	65	Capacitor Fixed
25	Low Grille	64	Compressor Capacitor
24	Step Motor Bracket	63	Condenser Motor
23	Step Motor	62	Low Right Volute
22	Main Gear	61	Condenser Fan
		60	Low left Volute
20	Display PCB	59	Capillary
19	Facial mask	58	Support
18	Outer Louver	57	Condenser
17	Axle Sleeve		
		54	Magnetic Switch
15	Top Cover	53	Base
14	Gear Support	52	Castor
13	Auxiliary Gear	51	Splash Wheel
12	Wear resistant washer	50	O-ring
11	Gear screw	49	Splash Motor
10	Up Air Outlet	48	Splash Motor Box
9	Evaporator	47	Compressor
8	Up Rear Volute		
7	Evaporator Fan	45	Isolate Plate
		44	Water Stopper
5	Up Front Volute	43	Discharge Nut
4	Evaporator Motor	42	Power Cord
3	Hidden Display Cover	41	Wire Clamp
2	Hidden Display PCB	40	Up Motor Capacitor
1	Front Panel	39	Down Motor Capacitor
NO	Material name	NO	Material name