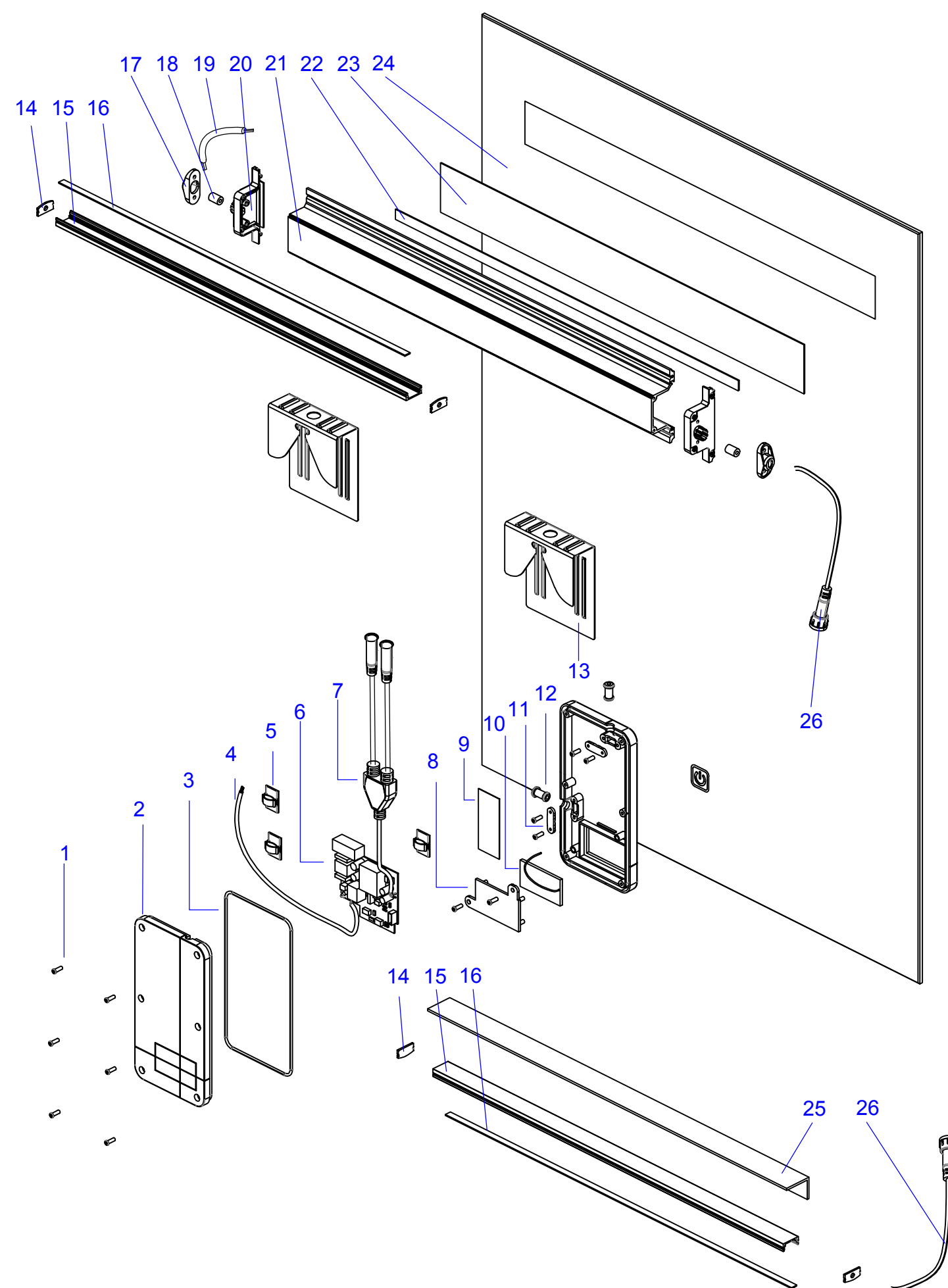


产品型号

M4022-5070



序号	名称	编 码	数量
1	Screw	LS-M3-10	12
2	Driver box housing	TY15080B20	1
3	waterproof ring	MF102145-1	1
4	cable	H05VVH2-F	1
5	Cable pressing button	GD19	4
6	driver	CL-30W-1W2A1L-05	1
7	waterproof cable female	A-02-18	1
8	tension disc	XK15080-30	1
9	double side tape	3M4950	1
10	touch screen	CL-W1-T1RN1L-05	1
11	Cable pressing button	XK026-6(3.5)BK	2
12	waterproof plug	MF15080-2	2
13	Hanger	GP96-25	2
14	Plug	YD-1205-1	4
15	aluminium housing	YD-1205	2
16	pcb board	M4022-500-1	2
17	Cable pressing button	DT102BL31	2
18	waterproof plug	MF102BL8	2
19	cable	MF102145-1	1
20	Plug	DT102BL15	2
21	amp housing	XC102BL420	1
22	pcb board	SF5060-420-1	1
23	cover	PM102BL420	1
24	mirror	YJ4022-50	1
25	aluminium board	XC4022-41	1
26	waterproof cable female	A-02-18	2