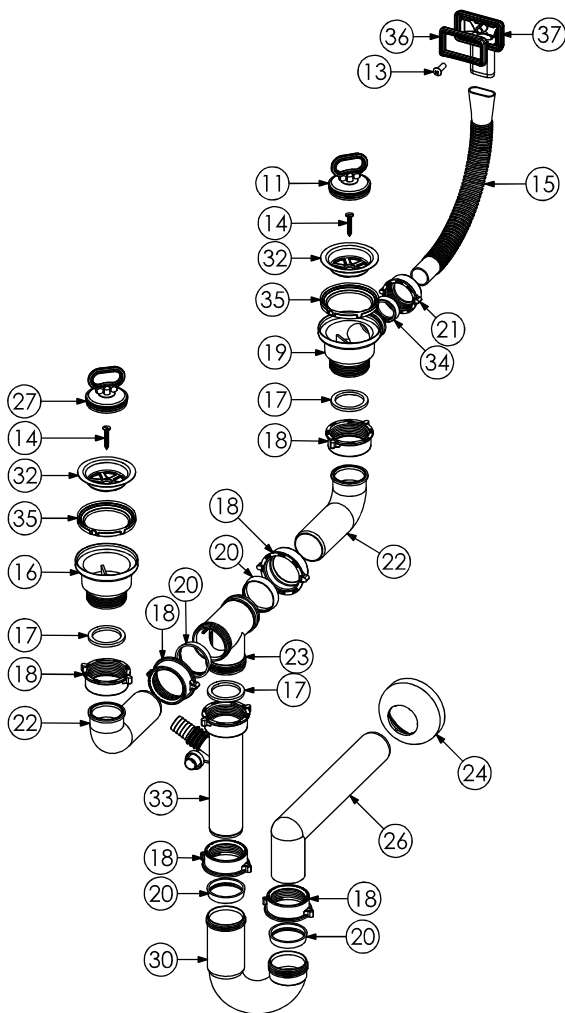


37	UK: RECTANGULAR OVERFLOW HEAD FR: TETE DE TROP-PLEIN RECTANGULAIRE	1	PP		S7338
36	UK: GASKET DOUBLE-FACE (FLAT AND CONCAVE) FOR RECTANGULAR OVERFLOW FR: JOINT DOUBLE-FACE (PLAT ET CONCAVE) POUR TROP-PLEIN RECTANGULAIRE	1	PVC		S7337
35	UK: ROUND GASKET FOR 1" 1/2 WASTE FR: JOINT ROND POUR BONDE 1" 1/2	2	PVC		S7303
34	UK: CONICAL GASKET FOR WHITE FLEXIBLE PIPE FR: JOINT CONIQUE POUR TUYAU FLEXIBLE	1	PVC		S7160
33	UK: CONNECTION PIPE WITH INTEGRATED DISHWASHER CONNECTION AND FIXING NUT FR: RACCORDEMENT AVEC PRISE POUR LAVE-VAISSELLE INTEGRE' ET ECROU DE FISSAGE	1	PP		S6550/G
32	UK: 1" 1/2 WASTE FLANGE FR: 1" 1/2 COUPELLE INOX	2	AISI 304		S6277/B
30	UK: U CURVED PIPE D. 40 FR: COUDE A U D. 40	1	PP		S6206
27	UK: HANDLE PLUG FR: BOUCHON POIGNEE	2			S6190
26	UK: OUTLET CURVED PIPE 90° INT L. 225 FR: COUDE 90° INT. L. 225	1	PP		S6158
24	UK: WALL COVER ROSE FR: ROSACE	1	PP		S6144
23	UK: T CONNECTION PIPE D. 40 FR: RACCORDEMENT A T	1	PP		S6138
22	UK: CURVED PIPE INT. L. 175 (380) D. 40 FR: COUDE INT L.175 (380) D. 40	2	PP		S6134
21	UK: FIXING NUT D. 32 FR: ECROU DE FISSAGE D. 32	1	PP		S6131
20	UK: CONICAL GASKET D. 40 FR: JOINT CONIQUE D. 40	4	PE		S6127
19	UK: 2" WASTE WITH OVERFLOW OUTLET FR: 2" BONDE AVEC SORTIE POUR TROP-PLEIN	1	PP		S6063
18	UK: FIXING NUT 1" 1/2 D. 46 FR: ECROU DE FISSAGE 1" 1/2 D. 46	6	PP		S6028
17	UK: FLAT ROUND GASKET FOR SIPHON FR: JOINT PLAT POUR SIPHON	3	PP		S6026
16	UK: 2" WASTE WITHOUTH OVERFLOW FR: 2" BONDE SANS TROP-PLEIN	1	PP		S6025
15	UK: WHITE FLEXIBLE PIPE FR: TUYAU FLEXIBLE	1			A7483
14	UK: SCREW TSP M6 X 30 DIN 963 UNI 6109 A2 FR: VIS TSP M6 X 30 DIN 963 UNI 6109 A2	2			A6961
13	UK: SCREW M6 X 16 T 1/2 CROSS D. 10 X 2,5 A2 FR: VIS M6 X 16 T 1/2 CROIX D. 10 X 2,5 A2	1			A6929
Item	Title	Qty	Material	Part	Part_Number
<b>BILL OF MATERIALS / LISTE DES COMPOSANTS</b>					



37	UK: RECTANGULAR OVERFLOW HEAD FR: TETE DE TROP-PLEIN RECTANGULAIRE	1	PP		S7338
36	UK: GASKET DOUBLE-FACE (FLAT AND CONCAVE) FOR RECTANGULAR OVERFLOW FR: JOINT DOUBLE-FACE (PLAT ET CONCAVE) POUR TROP-PLEIN RECTANGULAIRE	1	PVC		S7337
35	UK: ROUND GASKET FOR 1" 1/2 WASTE FR: JOINT ROND POUR BONDE 1" 1/2	2	PVC		S7303
34	UK: CONICAL GASKET FOR WHITE FLEXIBLE PIPE FR: JOINT CONIQUE POUR TUYAU FLEXIBLE	1	PVC		S7160
33	UK: CONNECTION PIPE WITH INTEGRATED DISHWASHER CONNECTION AND FIXING NUT FR: RACCORDEMENT AVEC PRISE POUR LAVE-VAISSELLE INTEGRE' ET ECROU DE FISSAGE	1	PP		S6550/G
32	UK: 1" 1/2 WASTE FLANGE FR: 1" 1/2 COUPELLE INOX	2	AISI 304		S6277/B
30	UK: U CURVED PIPE D. 40 FR: COUDE A U D. 40	1	PP		S6206
27	UK: HANDLE PLUG FR: BOUCHON POIGNEE	2			S6190
26	UK: OUTLET CURVED PIPE 90° INT L. 225 FR: COUDE 90° INT. L. 225	1	PP		S6158
24	UK: WALL COVER ROSE FR: ROSACE	1	PP		S6144
23	UK: T CONNECTION PIPE D. 40 FR: RACCORDEMENT A T	1	PP		S6138
22	UK: CURVED PIPE INT. L. 175 (380) D. 40 FR: COUDE INT L.175 (380) D. 40	2	PP		S6134
21	UK: FIXING NUT D. 32 FR: ECROU DE FISSAGE D. 32	1	PP		S6131
20	UK: CONICAL GASKET D. 40 FR: JOINT CONIQUE D. 40	4	PE		S6127
19	UK: 2" WASTE WITH OVERFLOW OUTLET FR: 2" BONDE AVEC SORTIE POUR TROP-PLEIN	1	PP		S6063
18	UK: FIXING NUT 1" 1/2 D. 46 FR: ECROU DE FISSAGE 1" 1/2 D. 46	6	PP		S6028
17	UK: FLAT ROUND GASKET FOR SIPHON FR: JOINT PLAT POUR SIPHON	3	PP		S6026
16	UK: 2" WASTE WITHOUTH OVERFLOW FR: 2" BONDE SANS TROP-PLEIN	1	PP		S6025
15	UK: WHITE FLEXIBLE PIPE FR: TUYAU FLEXIBLE	1			A7483
14	UK: SCREW TSP M6 X 30 DIN 963 UNI 6109 A2 FR: VIS TSP M6 X 30 DIN 963 UNI 6109 A2	2			A6961
13	UK: SCREW M6 X 16 T 1/2 CROSS D. 10 X 2,5 A2 FR: VIS M6 X 16 T 1/2 CROIX D. 10 X 2,5 A2	1			A6929
Item	Title	Qty	Material	Part	Part_Number
<b>BILL OF MATERIALS / LISTE DES COMPOSANTS</b>					