



PERFORMER

ASSEMBLY GUIDE

Read owner's guide before using the barbecue.

Veuillez lire le manuel du propriétaire avant d'utiliser le barbecue.

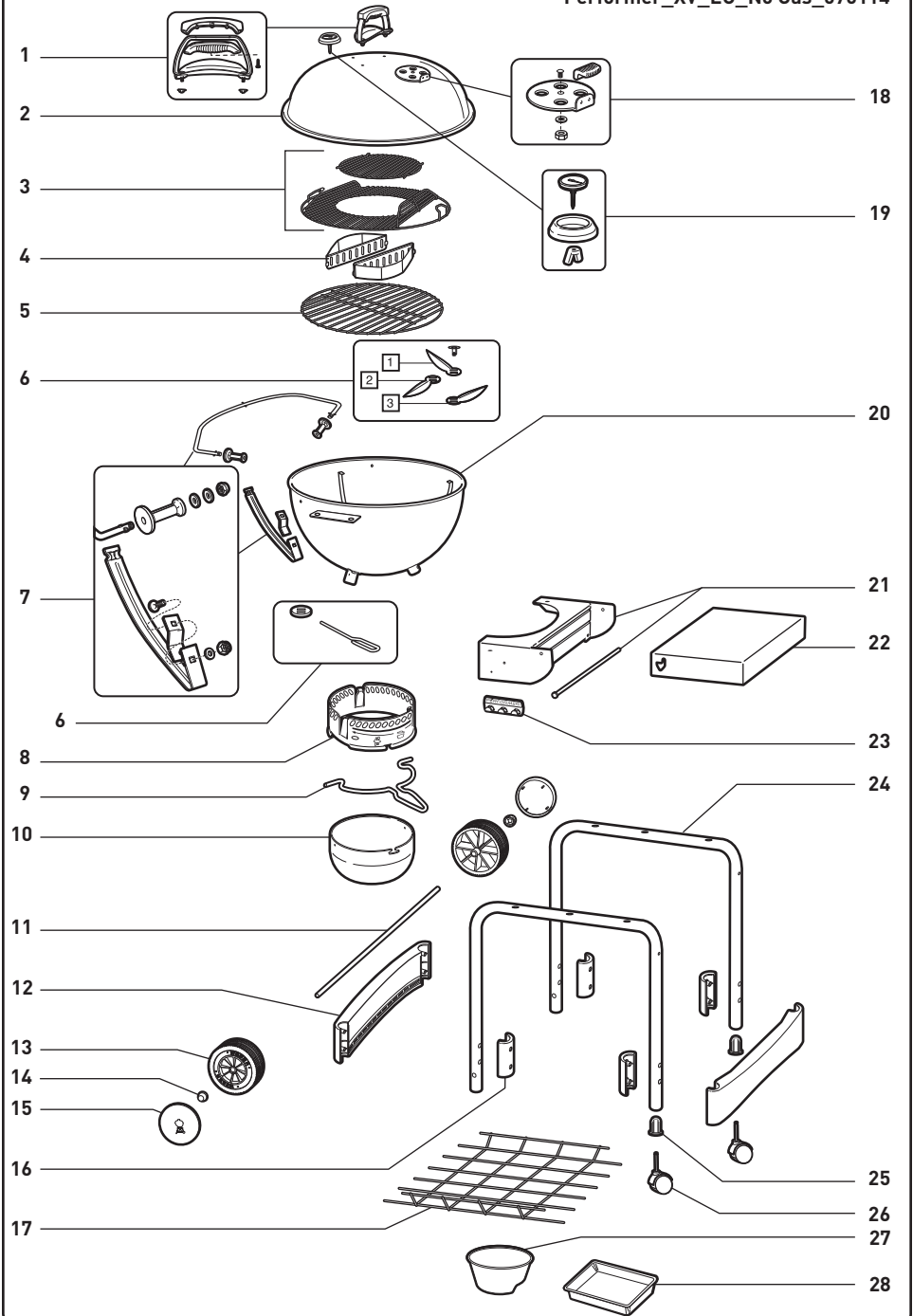
Lesen Sie das Benutzerhandbuch durch, bevor Sie den Grill in Betrieb nehmen.

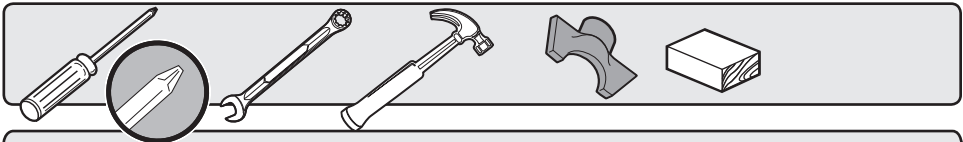
22 inch
(57 cm)



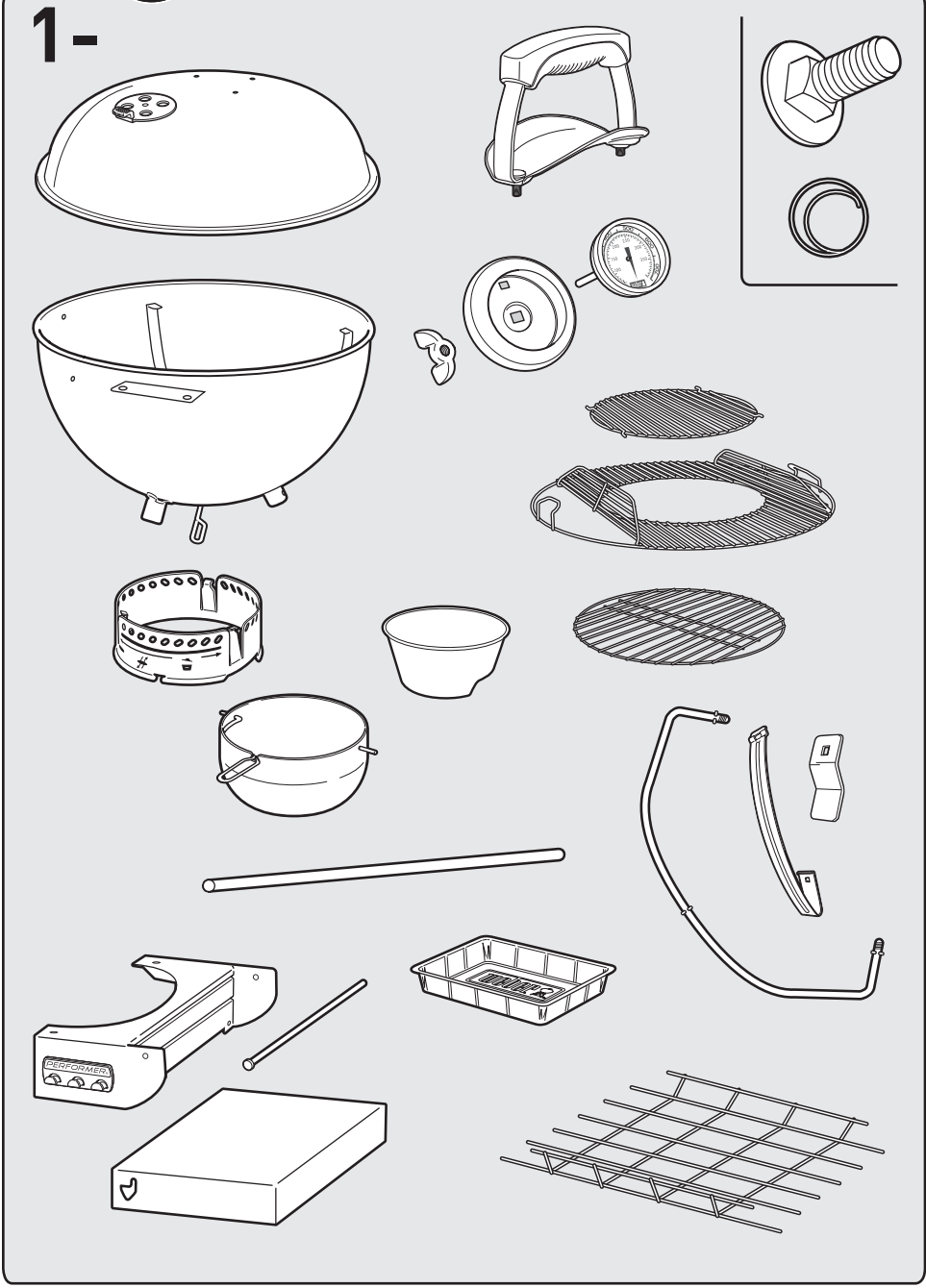
51589

04/01/19

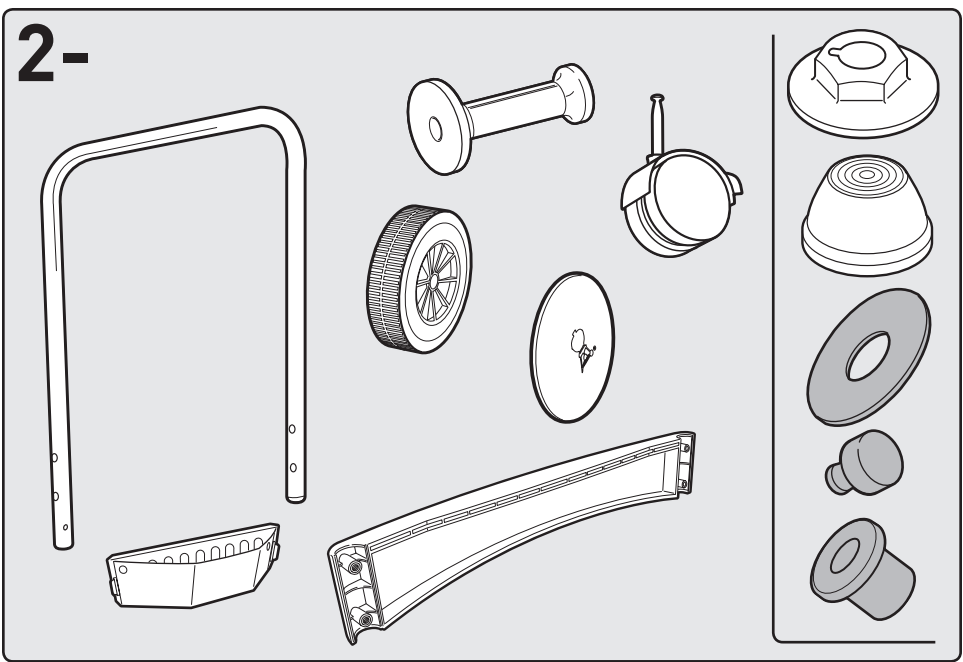




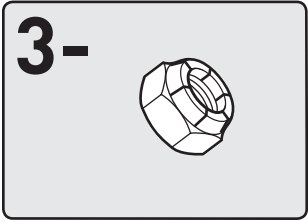
1-



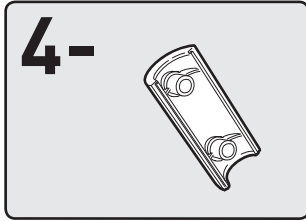
2-



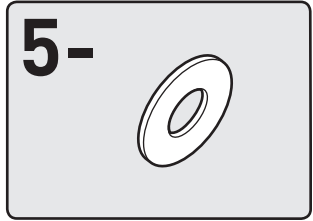
3-



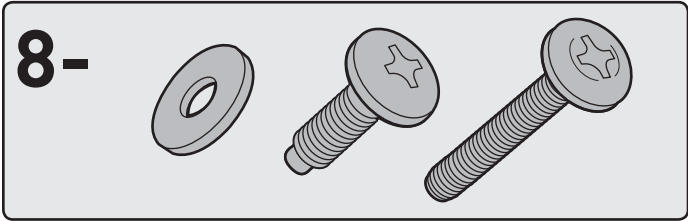
4-



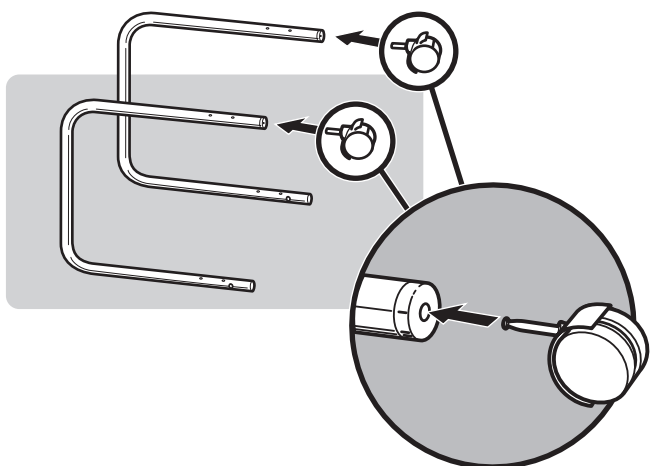
5-



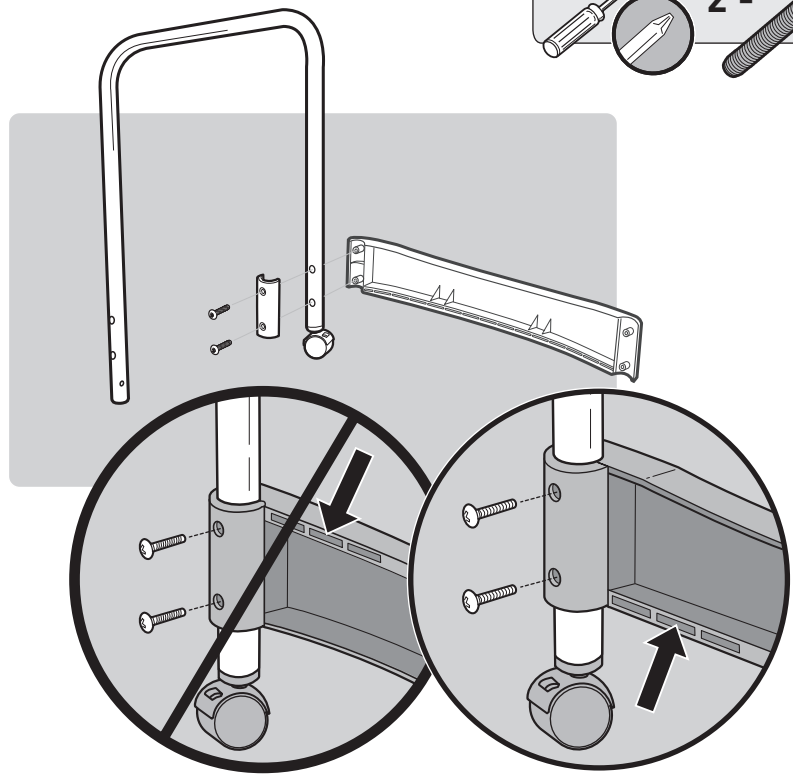
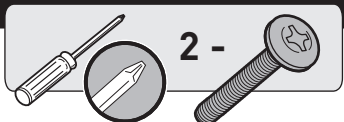
8-



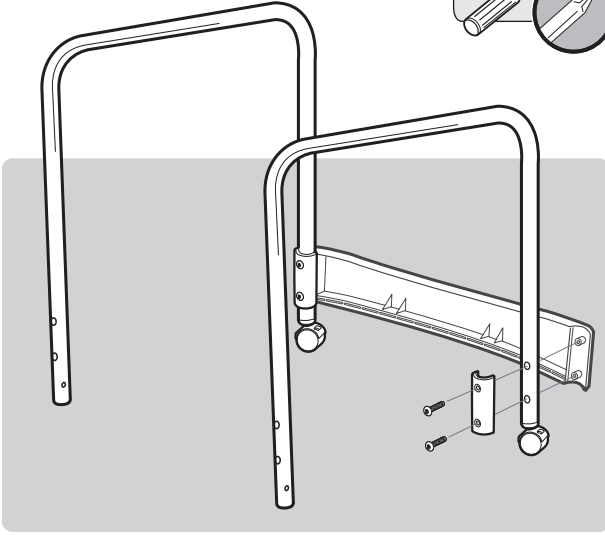
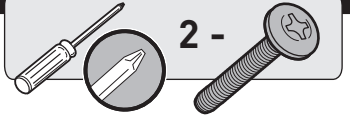
1



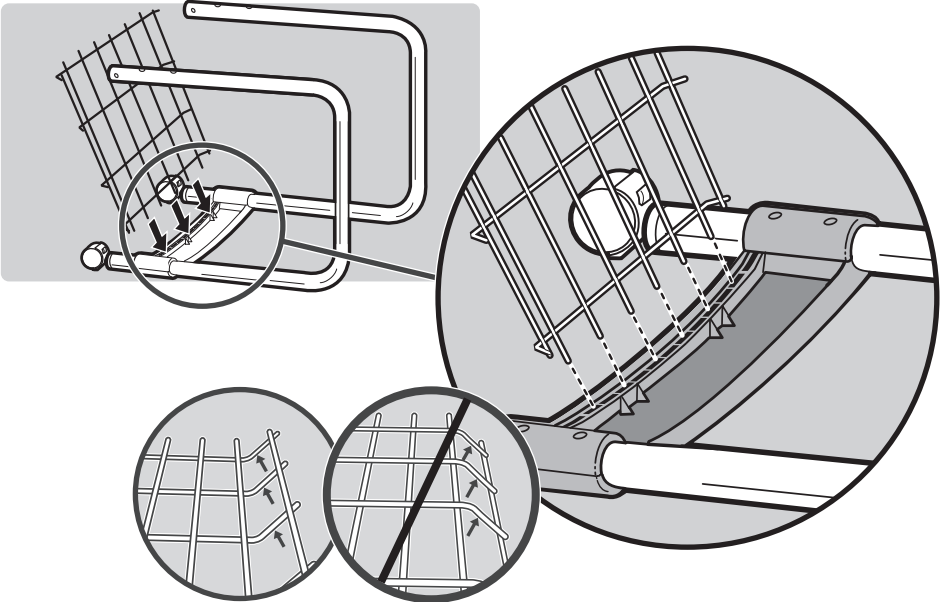
2



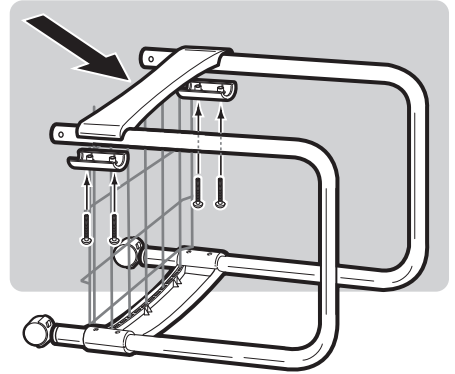
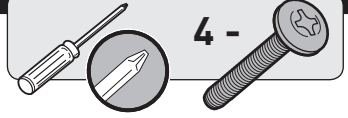
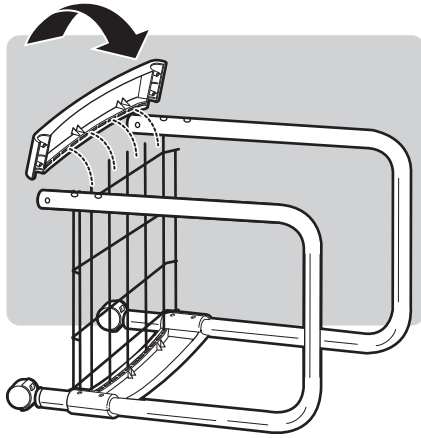
3



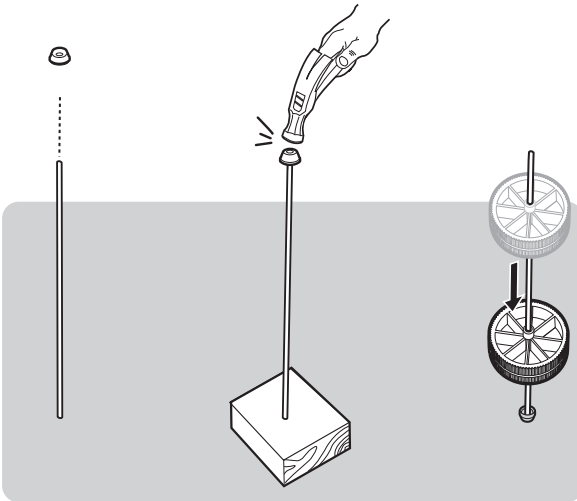
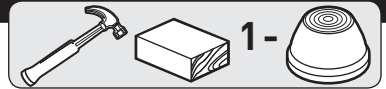
4



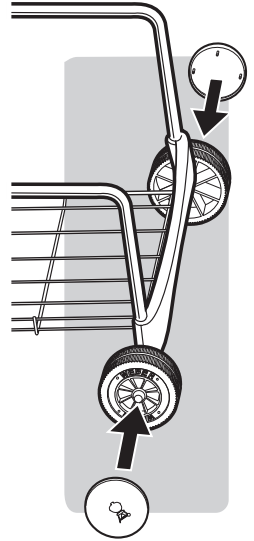
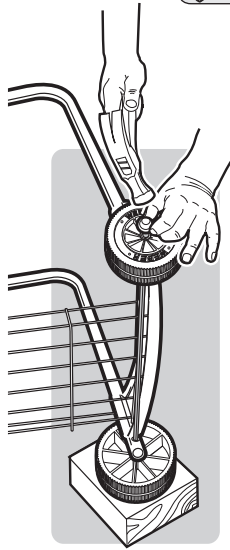
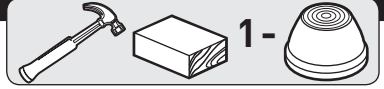
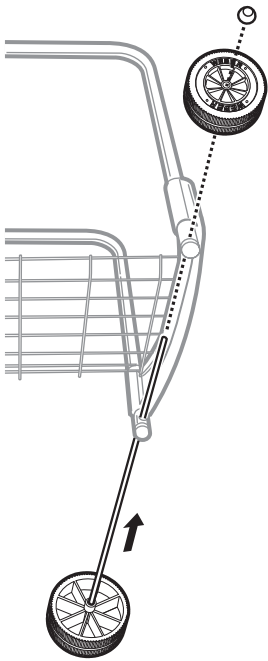
5



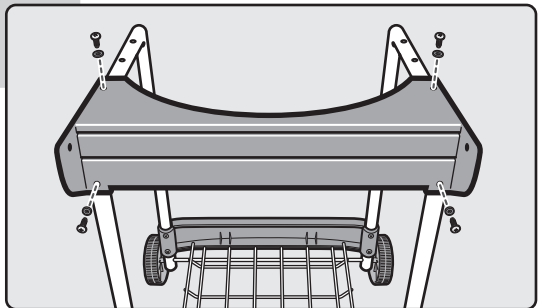
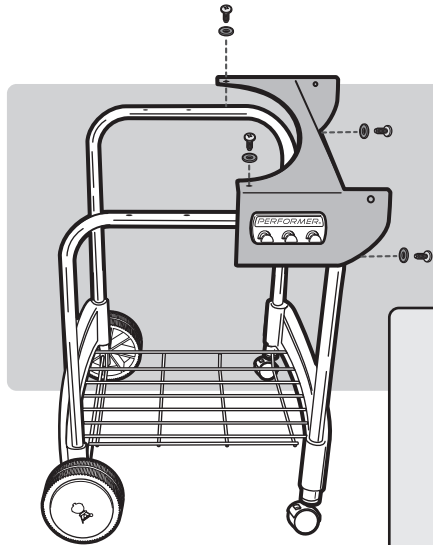
6



7

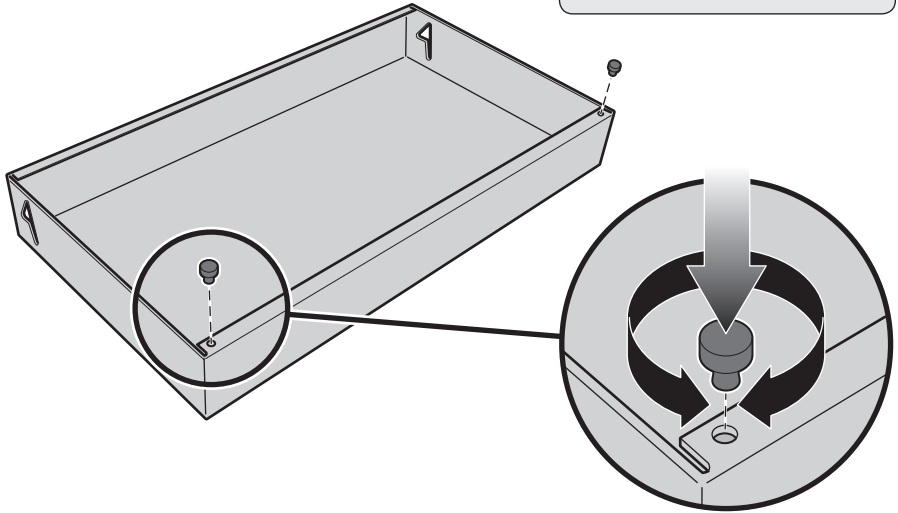


8



9

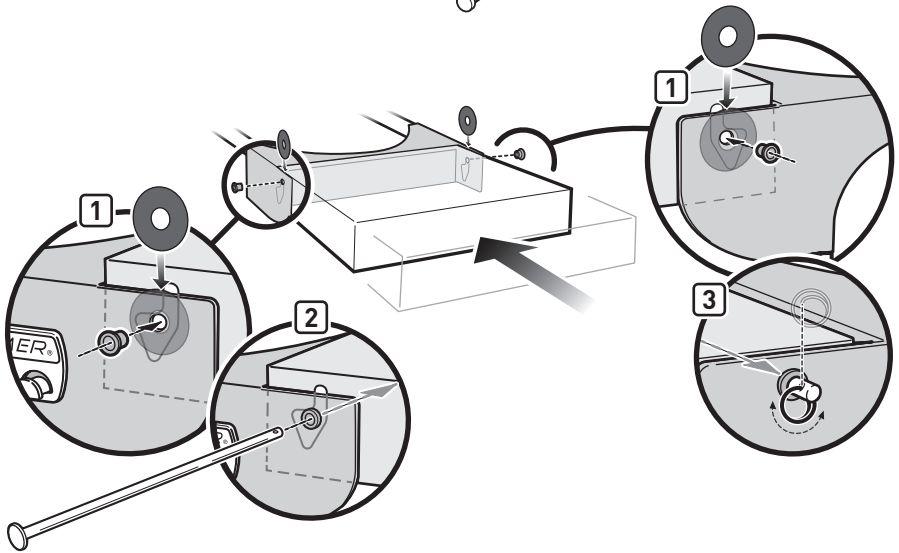
2- 

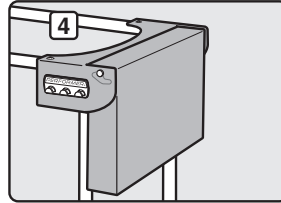
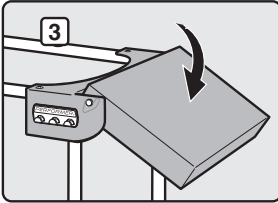
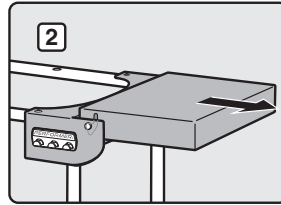
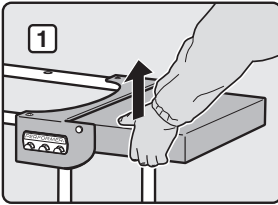
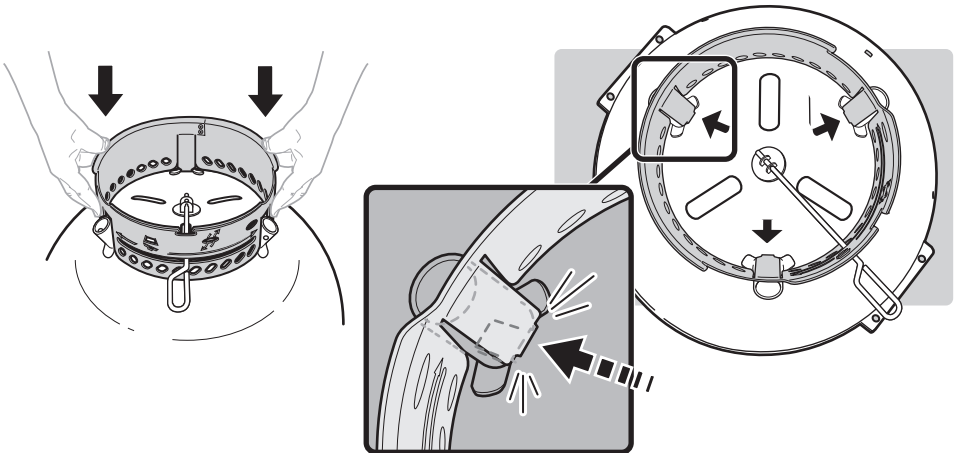
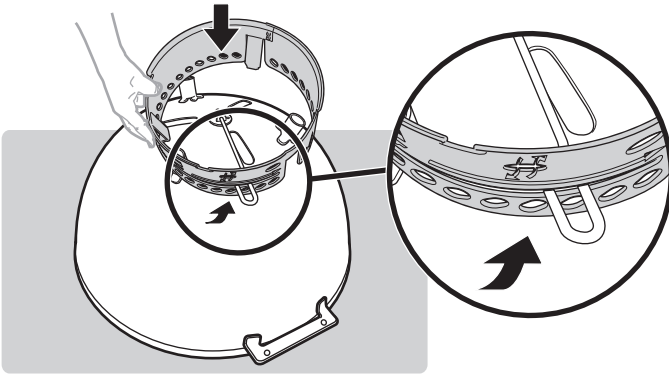


10

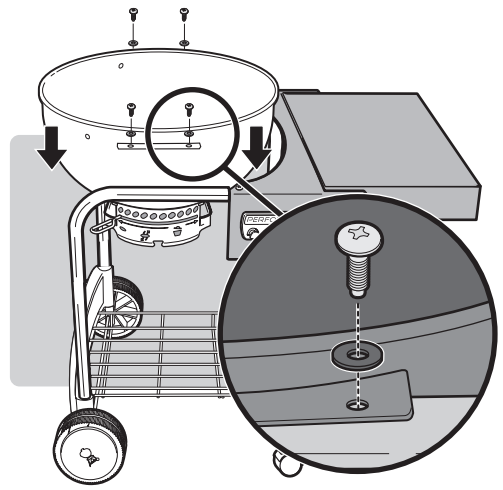
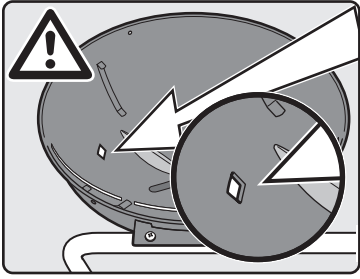
1- 

2-  

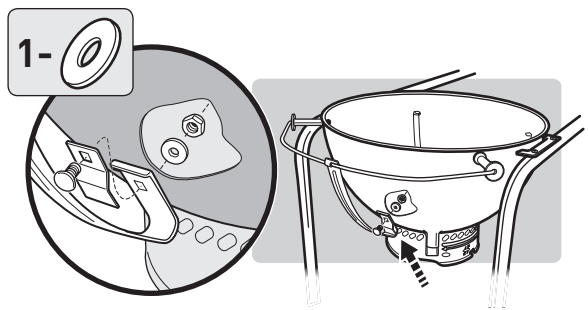
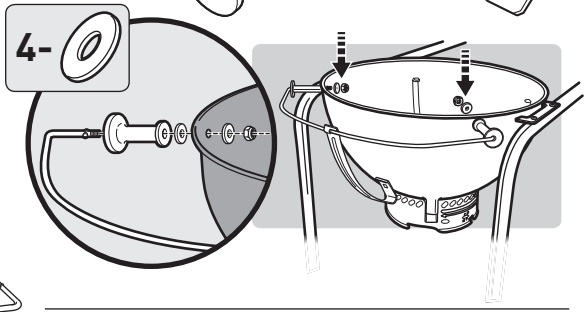
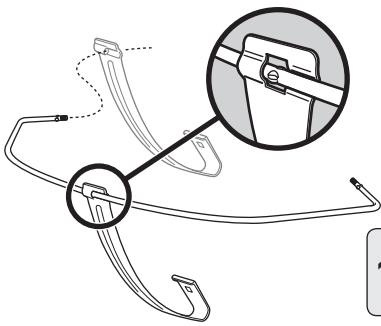


11**12**

13



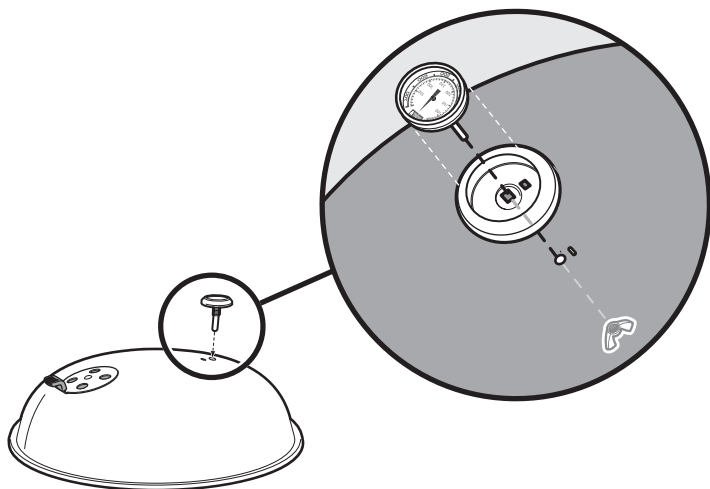
14



15



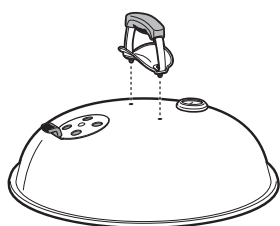
1-



16



2-



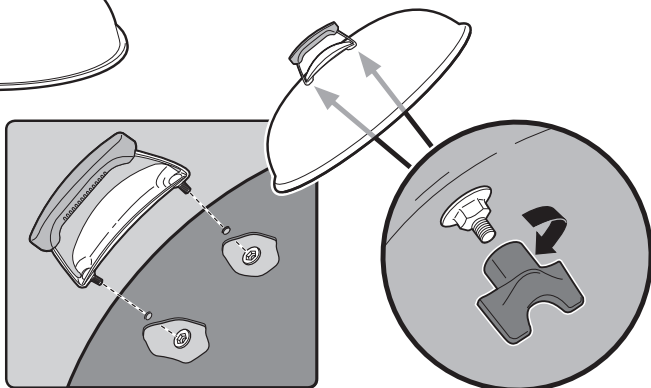
EN ⚠ DO NOT OVER TIGHTEN.

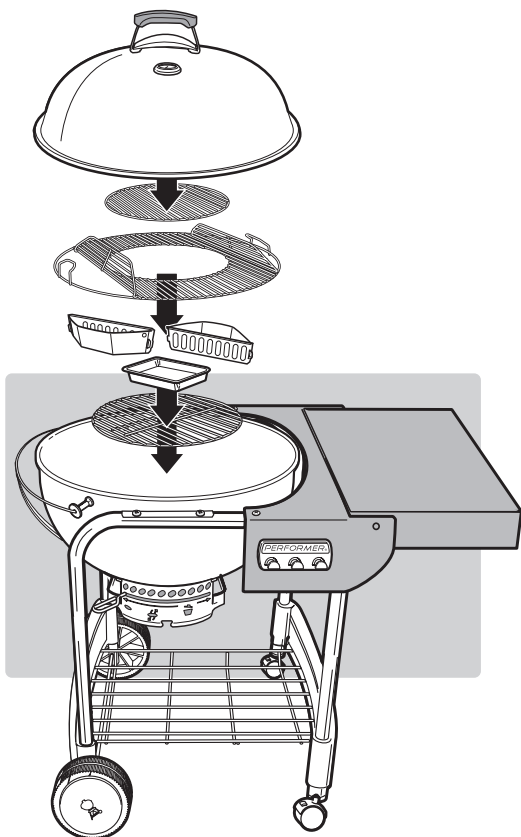
ES ⚠ NO APRIETE EXCESIVAMENTE LOS HERRAJES.

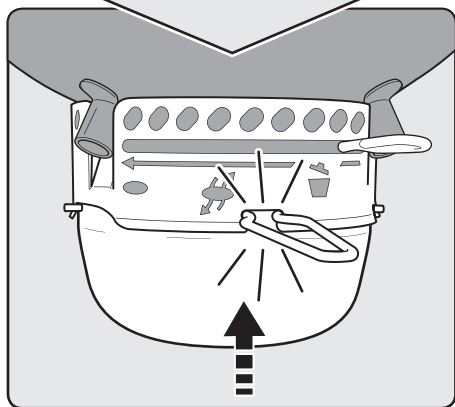
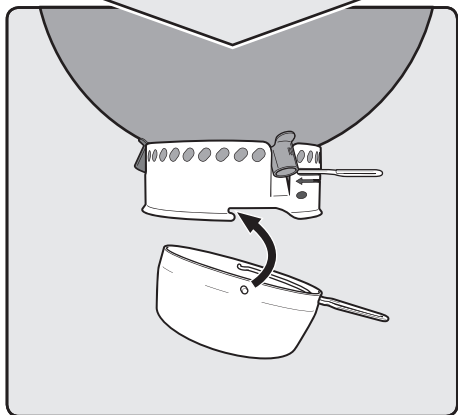
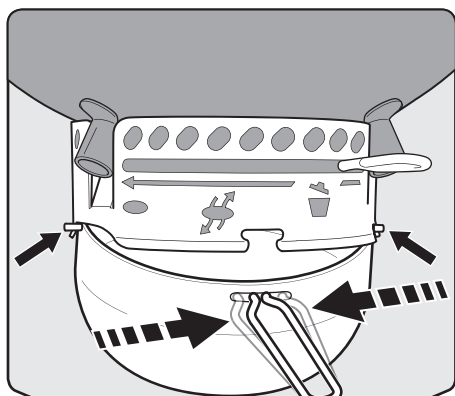
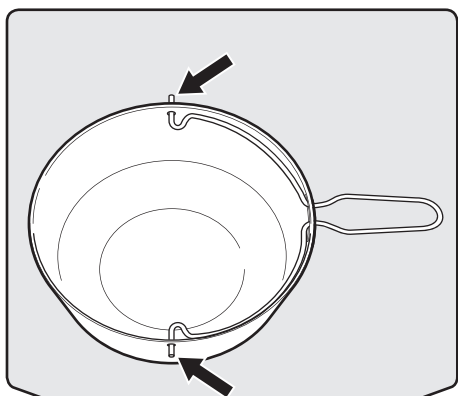
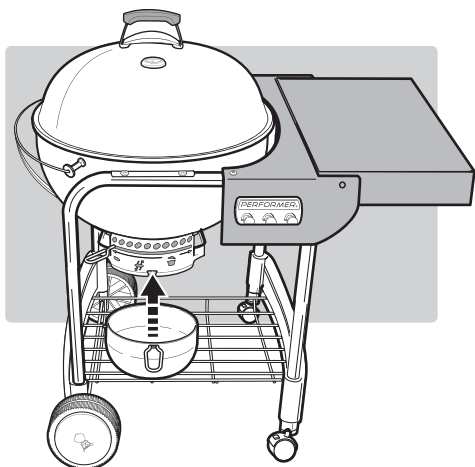
FR ⚠ NE PAS TROP SERRER LES VIS.

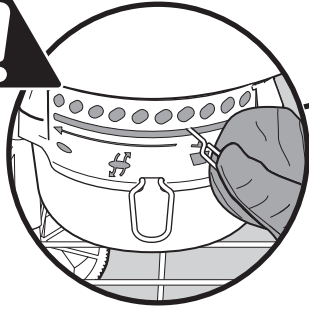
IT ⚠ NON STRINGERE ECCESSIVAMENTE LA MINUTERIA.

PT ⚠ NÃO APERTAR AS FERRAGENS DEMASIADO.

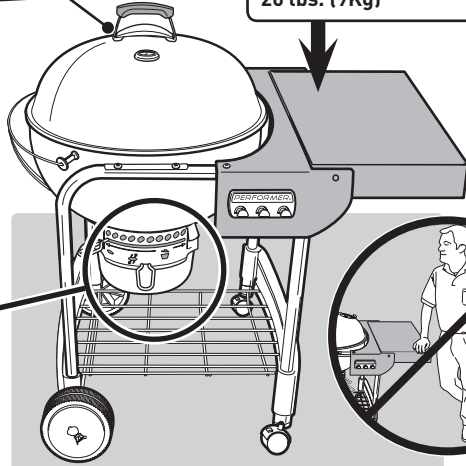








Maximum Table Load:
20 lbs. (9Kg)

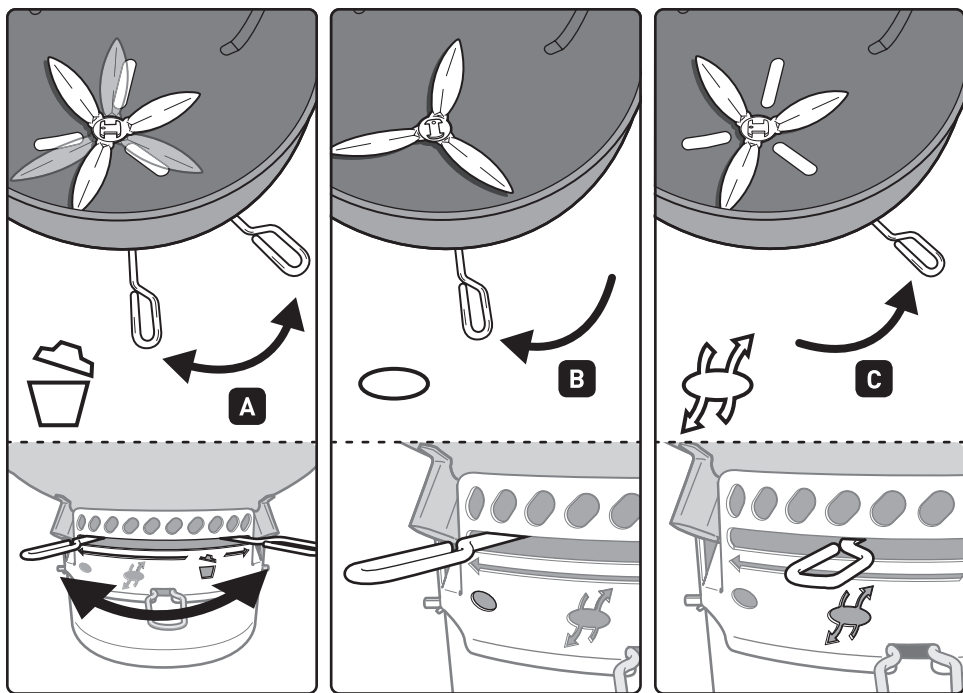


ES Carga Máxima en la Tabla:
20 libras (9 kg)

FR Charge Maximale sur le
Plan de Travail : 9 kg

IT 9 Kg Peso Massimo
Ripiano

PT 9 Kg de Carga Máxima na
Mesa



EN A - Clear ashes B - Vents closed C - Vents open

⚠ **WARNING:** When using liquid starters always check ash catcher before lighting. Fluid can collect in the ash catcher and could ignite, resulting in a fire below the bowl. Remove any starting fluid from the ash catcher before lighting charcoal.

ES A - Eliminación de la ceniza B - Orificios cerrados C - Orificios abiertos

⚠ **ADVERTENCIA:** Si usa fluidos para encender el carbón, revise siempre el recogedor de cenizas antes de encender. El fluido que puede acumularse en el recogedor de cenizas podría inflamarse y provocar un incendio debajo de la olla. Elimine cualquier fluido de encendido en el recolector de cenizas antes de encender el carbón vegetal.

FR A - Evacuation des cendres B - Clapets fermés C - Clapets ouverts

⚠ **AVERTISSEMENT:** Lorsque vous utilisez du liquide d'allumage, vérifiez toujours le cendrier avant d'allumer. Le liquide risque de s'écouler dans le cendrier et de s'y enflammer, provoquant ainsi un feu sous le foyer. Retirez tout fluide de démarrage de l'attrape-cendres avant d'allumer le charbon de bois.

IT A - Eliminare la cenere B - Prese d'aria chiuse C - Prese d'aria aperte

⚠ **AVVERTENZA:** quando si usano prodotti liquidi per accendere la carbonella, occorre controllare sempre il raccogli cenere prima procedere. È possibile infatti che del fluido si raccolga nel raccogli cenere e prenda fuoco causando un incendio sotto il barbecue. Prima di accendere il carbone, rimuovere eventuali liquidi accendifuoco dal raccogli cenere.

PT A - Limpe as cinzas B - Orifícios fechados C - Orifícios abertos

⚠ **ATENÇÃO:** Quando estiver usando fluidos líquidos para acendimento, verifique antes o coletor de cinzas. O fluido pode ficar acumulado no coletor e provocar fogo embaixo do recipiente. Retire todos os fluidos de ignição do coletor de cinzas antes de acender o carvão.









Weber-Stephen Products LLC
www.weber.com

© 2019 Designed and engineered by Weber-Stephen Products LLC,
1415 S. Roselle Road, Palatine, Illinois 60067 USA.