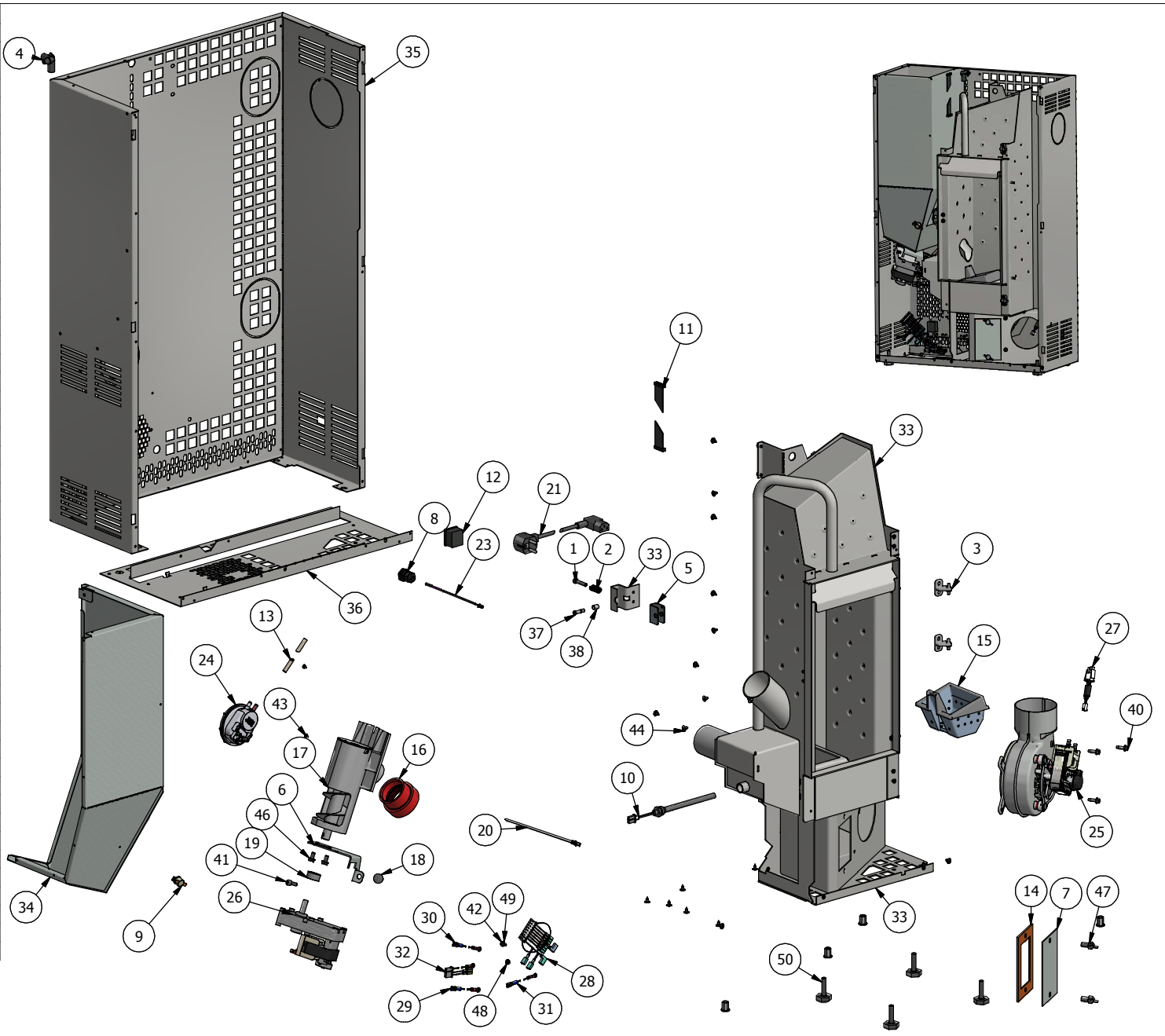



| Elenco parti |     |     |            |            |            |   |
|--------------|-----|-----|------------|------------|------------|---|
| RIF          | GRP | QTA | CODICE DXF | CODICE F.  | N.PARTE    | DESCRIZIONE                                   |
| 1            | GS  | 1   |            | 120159020  | 120159020  | Vite TCEI bassa PG DIN7984 C18.8 M6x30 ZB     |
| 2            | GS  | 1   |            | 120160020  | 120160020  | MOLLA COMP.F.1.8 De 11 Lo 24 St6.5 Aus.302    |
| 3            | GS  | 2   |            | 120198020  | 120198020  | CERNIERA                                      |
| 4            | GS  | 1   |            | 180198010  | 180198010  | PRESA ARIA EPDM PLT                           |
| 5            | GS  | 1   | 241158311  | 241158313  | CAC1531    | SUPPORTO PERNO A "C"                          |
| 6            | GS  | 1   | 241198041  | 241198043  | CAC2405    | STAFFA MOTORIDUTTORE SLIM                     |
| 7            | GS  | 1   | 2401300111 | 2401300111 | CLO5503    | CHIUSURA VANO FUMI CLOE                       |
| 8            | GE  | 1   |            | 14513018   | COM0158    | PRESSAC.+CONT.DADO(410700 - 410694)           |
| 9            | GE  | 1   |            | 14513006   | COM0207-1  | TERMOSTATO PAST.60°(3TE1NT01L-4073)           |
| 10           | GE  | 1   |            | 145181040  | COM0224    | CANDELETTA HT 69812 230V-300W                 |
| 11           | GE  | 1   |            | 14513007   | COM0240    | CAVO FLAT CONSOLLE SCHEDA L=1200              |
| 12           | GE  | 1   |            | 14513084   | COM0293    | SPINA DA INCASSO SNAP-IN + FUSE               |
| 13           | GS  | 1   |            | 180194020  | COM0401    | TUBO SILICONICO 8X4                           |
| 14           | GS  | 1   |            | 18013001   | COM0545    | GUARNIZIONE SILICONICA ROSSA 130X80           |
| 15           | GS  | 1   |            | 130158010  | COM0575    | CROGIOLO IN GHISA 3-7KW                       |
| 16           | GS  | 1   |            | 180194010  | COM0588    | DISACCOPIATORE GUARNIZIONE COCLEA 60          |
| 17           | GS  | 1   |            | 140198050  | COM0589    | COCLEA 60ab25 Mcz                             |
| 18           | GS  | 1   |            | 120172010  | COM0595    | PARACOLPO D=18MM PER FORO D=9MM               |
| 19           | GS  | 1   |            | 120198010  | COM0610    | GHIERA D=25 PER BLOCCAGGIO MOT.               |
| 20           | GE  | 1   |            | 145157070  | COM0625    | BLOCCACAVI CON FASCETTA DA TAGLIARE           |
| 21           | GE  | 1   |            | 14513041   | COM2210    | CAVO+SPINA SCHUKO (H5V375N020SAASX) L.1,90 mt |
| 22           | GE  | 1   |            | 145194010  | COM2211    | SONDA FUMI L=830 CON CAVO VS ED AMP           |
| 23           | GE  | 1   |            | 145150100  | COM2221    | SONDA AMB. L=550 DOPPIO ISOLAMENTO            |
| 24           | GE  | 1   |            | 145181110  | COM2224    | PRESSOSTATO*HUBA*ON-P.20PA/OFF-P.10PA         |
| 25           | GE  | 1   |            | 145181100  | COM2227    | ASPIR FUMI CAF12Y 120/80 STAGNO               |
| 26           | GE  | 1   |            | 145181010  | COM2241    | MOTOR. 1 Rpm GGM KMF-2610-6120AC-011          |
| 27           | GE  | 1   |            | 145194020  | COM2803    | CAVO ENCODER L=615                            |
| 28           | GE  | 1   |            | 145194040  | COM2806    | CABLAGGIO 8 PIN COMPLETO                      |
| 29           | GE  | 1   |            | 14513022   | COM2908    | CAVO MASSA L=680mm                            |
| 30           | GE  | 1   |            | 14513060   | COM2926    | CAVO MASSA L=150                              |
| 31           | GE  | 1   |            | 145140110  | COM2953    | CAVO MASSA L=280 mm                           |
| 32           | GE  | 1   |            | 145183040  | COM2959    | CABLAGGIO (6.3) 3 PIN COMPLETO L=140 mm       |
| 33           |     | 1   |            | 240194114  | MNA0390    | ASS.CALDAIA 4.9-7KW                           |
| 34           | GS  | 1   | 241194011  | 241194013  | MNA0401    | INVOLUCRO SERBATOIO                           |
| 35           | GS  | 1   | 240194121  | 240194123  | MNA0517    | INVOLUCRO STUFA 580X900                       |
| 36           | GS  | 1   | 240194761  | 240194763  | MNA0518    | FONDO AVVITATO STUFA 575X241                  |
| 37           | GS  | 1   |            | 14013106   | SOL0206A-L | PERNO AVP 8X24 M6 +TCBRUNITO                  |
| 38           | GS  | 1   |            | 14013108   | SOL0206B-L | BOCCOLA AVP T.8X10.5 BRUNITA                  |
| 39           |     | 1   |            | 12013069   | VIT0046    | VITE AUTOF. ZNB SENZA PUNTA 4,2X9,5           |
| 40           |     | 3   |            | 12013067   | VIT0053    | VITE TRILOBATA 5X16 TE ZINCATA                |
| 41           |     | 1   |            | 12013026   | VIT0130    | VITE CL 8.8 6 X 16 ZINCATA BIANCA             |
| 42           |     | 1   |            | 12013055   | VIT0133    | VITE TC CROCE M4X10 Z.BIAN                    |
| 43           |     | 2   |            | 12013024   | VIT0216    | VITE AUTOFIL.3,5X6.5 TC ZINCATA BNC           |
| 44           |     | 22  |            | 120194030  | VIT0302    | VITE AUTOFIL T1/2T+4.2X9.5 ZIGR.ZNN           |
| 45           |     | 9   |            | 12013003   | VIT0411    | VITE TRIL. 4X10 TPS ZINCATA NERA              |
| 46           |     | 2   |            | 12013014   | VIT0441    | VITE M6X102TE ZINCATA BIANCA                  |
| 47           | GS  | 2   |            | 12013008   | VIT0451    | GALLETTO 8X15                                 |
| 48           |     | 1   |            | 12013118   | VIT0602    | DADO ESAG. M4 ZNB                             |
| 49           |     | 2   |            | 12013044   | VIT0758    | RONDELLA DENT.INTERNA D=5 ZNB                 |
| 50           | GS  | 4   |            | 12013006   | VIT1128    | PIEDINO REGOLABILE NERO M8X35                 |



|   |  |  |  |  |         |                               |           |
|---|--|--|--|--|---------|-------------------------------|-----------|
|  |  | Descrizione  |  | 1   Prima emissione  |         | 24/01/2019   Andrea   Roberto |           |
|   |  | ASS.STRUTTURA COMUNE 4.9-7KW<br>GRACE-SPIRIT-ROXY-ATRIUM-TABLA-MADISON |  | Nr   | Changes | Date                          | Signature |
| Sviluppo  |  | Materiale  |  | Controllo  |         | General Tolerances            |           |
| XX  |  |  |  | Dimensions <=500mm=+/- 0.3   Non measured angles at 90° =+/-1°<br>Dimensions >500<1000mm=+/- 0.6   Measured angles =+/-1°<br>Dimensions >=1000mm=+/- 1 |         |                               |           |
| Area  |  | Destinazione   |  | Scala  |         | Numero Parte                  |           |
| 5306756,945 mm^2  |  |  |  | 1:8  |         | 19/10/2016                    |           |
| N. Pieghie  |  | Prov.  |  | Codice DXF   |         | Codice Finito                 |           |
| Kg  |  | Tipo Vernice   |  |  |         | MNA9801                       |           |
| 30,815 kg   |  |  |  |  |         |                               |           |

According to the law, this drawing is the property of CADEL. Any reproduction or disclosure to third parties without the prior written authorization is strictly prohibited.