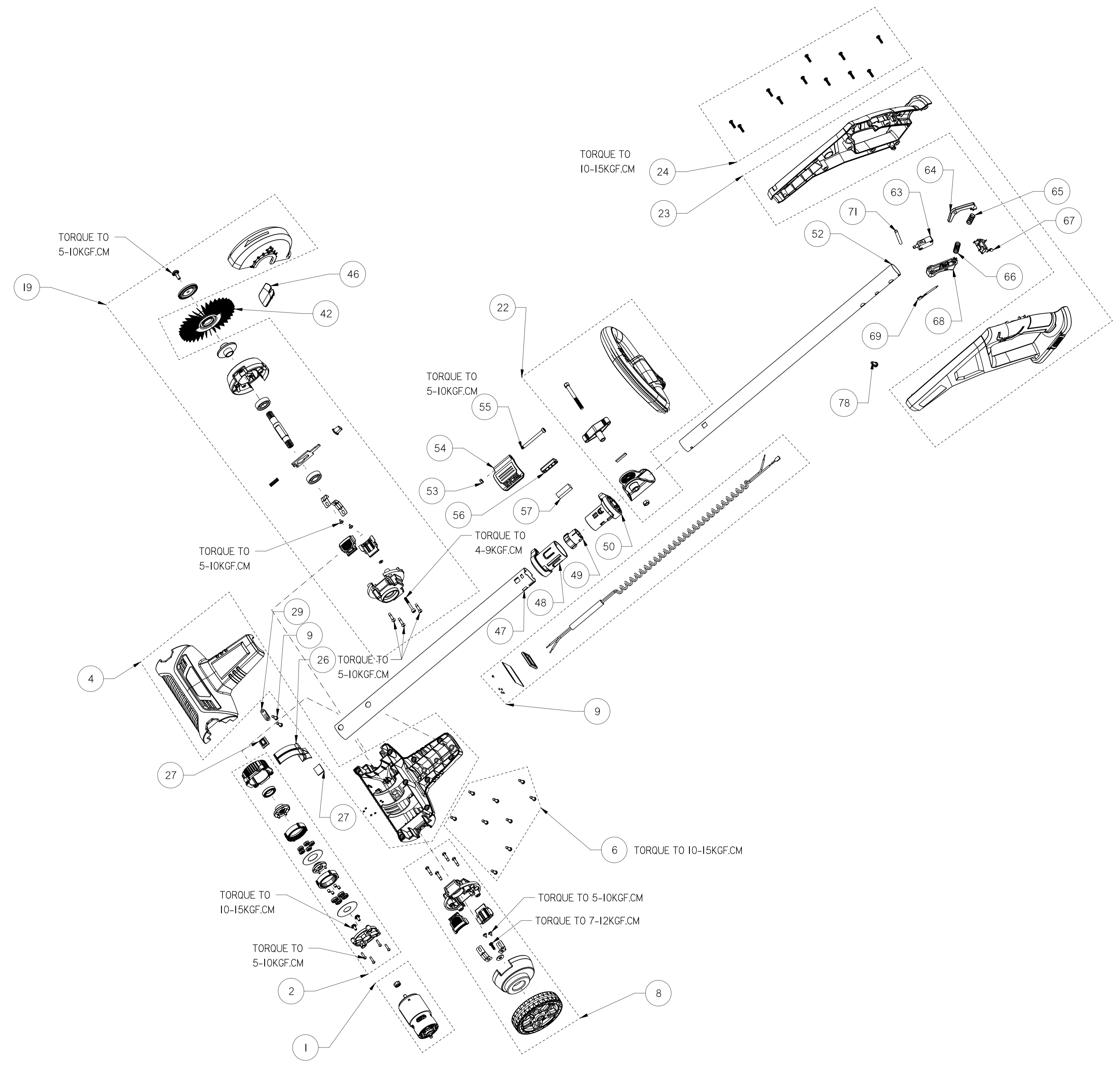


12	13	14	15	16
REV	CHANGE DESCRIPTION	ZONE	ECN #	DATE
A	DESIGN RELEASE		ECN-HFE012673	11/15/19 WZS
				APV BY
				GABOR



PRELIMINARY

PRELIMINARY

NOTES: (I)

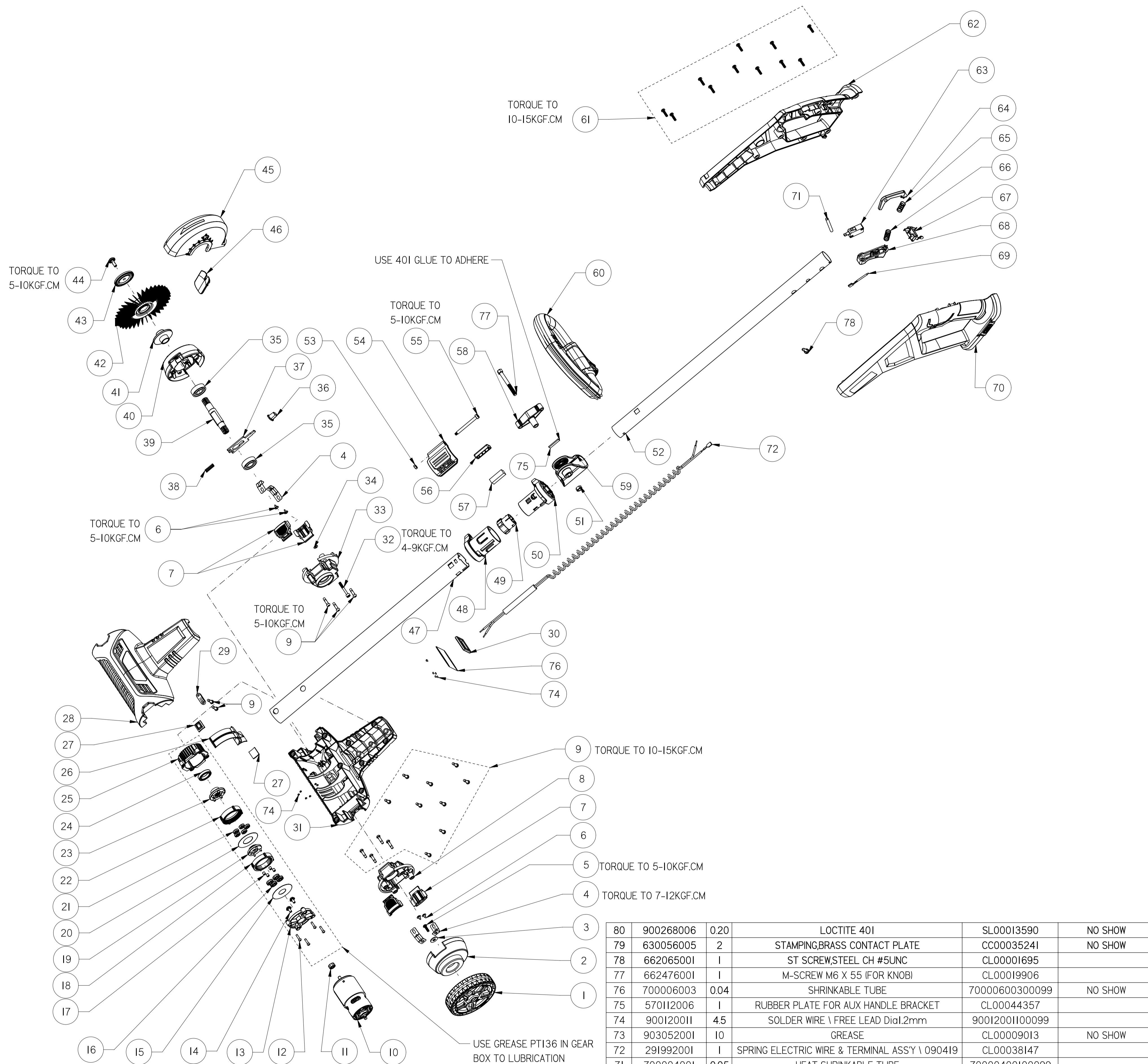
(M) 1. REFER TO COMPONENT DRAWING FOR INSPECTION CRITERIA

2. SEE QUALITY ASSURANCE FOR ADDRESSING CRITICAL AND MAJOR DIMENSIONS

TOTAL (C) THIS PAGE = 0

TOTAL (M) THIS PAGE = 1

	Techtronic Industries Co. Ltd.		METRIC	UNLESS OTHERWISE SPECIFIED	3RD ANGLE										
	<small>CONFIDENTIAL</small>		<small>UNLESS OTHERWISE SPECIFIED DIMENSIONS ARE IN MILLIMETERS</small>	<small>PROJECTION</small>											
<small>THIS DRAWING IN DESIGN AND DETAIL IS THE PROPERTY OF TECHTRONIC INDUSTRIES COMPANY LIMITED. ALL RIGHTS OF DESIGN OR INVENTION ARE RESERVED.</small>	<small>DIMENSION & TOLERANCE PER ASME Y14.5 - 2009</small>	<small>UNSPECIFIED DIMENSIONS REFERENCE CAD MODEL</small>	<small>ON DRA PIN</small>	107419008	<small>PART NAME</small>	EU, RY18PCA-120 \ RYOBI ONE+ 18V									
<small>WEIGHT</small>	WEIGHT & TOLERANCE	<small>DRAWN BY</small>	JACE	<small>MODEL NO.</small>											
<small>COLOR</small>	COLOR NAME, COLOR CHIP #	<small>BU</small>	OP	<small>CAD TOOL</small>	NX	<small>SCALE</small>	1:1	<small>SHEET</small>	2 OF 3	<small>SIZE</small>	A1	<small>PLM ID</small>	CL00057380	<small>REV</small>	A



NOTES: (I) 1. REFER TO COMPONENT DRAWING FOR INSPECTION CRITERIA
 2. SEE QUALITY ASSURANCE FOR ADDRESSING CRITICAL AND MAJOR DIMENSIONS

TOTAL (C) THIS PAGE = 0
 TOTAL (M) THIS PAGE = 1

ITEM	CN	ORA	PN	QTY	PART NAME	PLM ID	REMARK
80	900268006	020			LOCTITE 401	SL00013590	NO SHOW
79	630056005	2			STAMPING BRASS CONTACT PLATE	CC00035241	NO SHOW
78	662065001	1			ST SCREW, STEEL CH #5UNC	CL00001695	
77	662476001	1			M-SCREW M6 X 55 (FOR KNOB)	CL00019906	
76	700006003	004			SHRINKABLE TUBE	70000600300099	NO SHOW
75	570112006	1			RUBBER PLATE FOR AUX HANDLE BRACKET	CL00044357	
74	900120011	45			SOLDER WIRE \ FREE LEAD Dia1.2mm	90012001100099	
73	903052001	10			GREASE	CL00009013	NO SHOW
72	291992001	1			SPRING ELECTRIC WIRE & TERMINAL ASSY \ 090419	CL00038147	
71	700004001	005			HEAT SHRINKABLE TUBE	70000400100099	
70	311202003	1			W/OVERMOLD_ REAR HANDLE LEFT	CL00044066	
69	292104001	1			ELECTRIC WIRE WITH TERMINAL ASSY \ 090419	CL00043437	
68	525491002	1			PLASTIC, TRIGGER/ LIGHT GREY	810600079	
67	300001064	1			CONTACT PLATE HOLDER ASS	30000106400099	
66	679002002	1			SPRING	67900200200099	
65	679083001	1			SPRING	CL00000792	
64	525492001	1			PLASTIC, LOCK OUT TRIGGER BUTTON/ LIGHT GREY	52549200100099	
63	760279001	1			SWITCH	76027900100099	
ITEM	CN	ORA	PN	QTY	PART NAME	PLM ID	REMARK

REV	CHANGE DESCRIPTION	ZONE	ECN #	DATE	APV BY
A	DESIGN RELEASE		ECN-HFE012673	11/14/19 WZS	GABOR

PRELIMINARY
PRELIMINARY

ITEM	CN	ORA	PN	QTY	PART NAME	PLM ID	REMARK
62	311203003	1			W/OVERMOLD_ REAR HANDLE RIGHT	CL00044067	
61	660206055	11			ST SCREW	66020605500099	
60	539708001	1			PLASTIC, FRONT HANDLE WHITE 8096	CL00056567	
59	531965002	1			PLASTIC, AUX HANDLE BRACKET \ 090419	CL00056119	
58	522983007	1			AUX. HANDLE KNOB	CL00019919	
57	563862001	1			RUBBER PLATE FOR LOCK	CL00009715	
56	531964001	1			PLASTIC, BLOCK	CL00019210	
55	662496001	1			M SCREW, STEEL CH M4.0X0.7 CH TORX T25 B	CL00018179	
54	531890001	1			PLASTIC, TELESCOPING LATCH	CL00018316	
53	661514002	1			NUT M4X0.7	66151400200099	
52	697496002	1			METAL, STEEL TUBE \ UPPER BOOM \ 090419\ ADD SP	CL00056117	
51	680196006	1			HEXAGON NUT ,M6x1.0-6H	68019600600099	
50	531893001	1			PLASTIC, UPPER SHAFT COUPLER	CL00018371	
49	531891002	1			PLASTIC, SHAFT SHIELD FOR UPPER SHAFT \ NEW \ 09	CL00044737	
48	531892001	1			PLASTIC, TELESCOPE COUPLER	CL00018369	
47	695760003	1			METAL, STEEL TUBE \ LOWER BOOM \ 090419	CL00036877	
46	564961001	1			NBR, THE SPLASH GUARD FOR THE WIRE BRUSH COV	CL00036810	
45	536758001	1			PLASTIC, GUARD \ FOR WIRE BRUSH	CL00035597	
44	662835001	1			M SCREW, STEEL TH M5.0X0.8 CH HEXAGON RECESS B	CL00038042	
43	613916001	1			POWDER METAL LOCK PLATE --LEFT	CL00035609	
42	314184001	1			STEEL BRUSH	CL00035595	
41	613917001	1			POWDER METAL LOCK PLATE --RIGHT	CL00035607	
40	536757001	1			PLASTIC, BASE \ FOR WIRE BRUSH ATTACHMENT	CL00034819	
39	622422001	1			MACHINING SHAFT \ FOR WIRE BRUSH	CL00035606	
38	679055012	1			SPRING	CL00022084	
37	635892001	1			STAMPING LOCK PLATE \ FOR WIRE BRUSH ATTACHMEN	CL00035612	
36	536759001	1			PLASTIC, LOCK BUTTON \ FOR WIRE BRUSH ATTACHMEN	CL00035613	
35	690697001	2			BALL BEARING, ID 12X28X8	69069700100099	
34	537698001	1			NYLON WASHER OD8MMX ID 3.5MMX TIMM FOR 09041	CL00041978	
33	536756003	1			PLASTIC COVER \ FOR WIRE BRUSH ATTACHMENT \ 09	CL00055426	
32	662897001	1			M SCREW, STEEL TH M4.0X0.7-6g PH W/FLAT WASHER	CL00040022	
31	536683000	1			PLASTIC, MOTOR HOUSING--BOTTOM\090419\001\GRE	CL00055424	
30	850116001	1			FERRITE BEAD, JPZIKSH32X4.5X27	85011600100099	
29	513211001	1			CORD CLIP	CL00007499	
28	536670002	1			PLASTIC, MOTOR HOUSING COVER \ 090419\001\GREEN	CL00055416	
27	570115001	2			RUBBER PLATE	57011500100099	
26	536684001	1			PLASTIC, AIR CHANNEL \ PA6-GF30%	CL00034785	
25	643570001	1			AL, GEAR BOX CASTING \ 090419\001	CL00036065	
24	681758001	1			BALL BEARING	68175800100099	
23	613911001	1			POWDER METAL, SECOND LEVEL PLANET GEAR CARRI	CL00034706	
22	613913001	1			POWDER METAL GEAR RING \ SECOND LEVEL	CL00034731	
21	613120001	5			3RD LAYER PLANET GEAR	CC00038157	
20	635883001	1			FLAT WASHER, STEEL CH 20X42X0.3 mm \ ZN-PLATED	CL00034742	
19	613918001	1			POWDER METAL, SECOND LEVEL CENTER GEAR	CL00034695	
18	613914001	1			POWDER METAL GEAR RING \ 1ST LEVEL	CL00034727	
17	680658003	3			NEEDLE BEARING, ID2.5xOD4.5x4.5mm	68065800300099	
16	613164001	4			1ST LAYER PLANET GEAR	CC00042283	
15	635881001	1			FLAT WASHER, STEEL CH 15X42X0.3 mm \ ZN-PLATED	CL00034743	
14	661861001	2			SCREW	66186100100099	
13	536686001	1			PLASTIC MOTOR MOUNTING PLATE \ 090419\PA6-GF3	CL00036071	
12	660211003	4			M SCREW, STEEL CH M3 PH B \ L=12mm	66021100300099	
11	613163001	1			MOTOR PINION	CC00042282	
10	742474001	1			18V-DC BRUSHED MOTOR \ CHUANG HONG \ LONG 700#	CL00034733	
9	660208052	18			ST SCREW M4x1.41 PH PHILLIPS B	66020805200099	
8	536756004	1			PLASTIC COVER \ FOR WHEEL ATTACHMENT \ 09041	CL00055468	
7	536696001	4			PLASTIC, PUSH BUTTON \ PA6-GF30%RG301 FLEXBONE	CL00035314	
6	662878001	4			ST SCREW, STEEL CH M3.0 PWH PHILLIPS B \ L=6.5MM	CL00041919	
5	660208055	1			ST SCREW M4*12F	66020805500099	
4	635893001	4			STAMPING SPRING PLATE \ FOR BUTTON	CL00035315	
3	678341001	1			WASHER OD14XID5.1X1.4THK	67834100100099	
2	536762001	1			PLASTIC, BASE \ FOR WHEEL ATTACHMENT	CL00034813	
1	536760001	1			WHEEL	CL00034812	
ITEM	CN	ORA	PN	QTY	PART NAME	PLM ID	REMARK

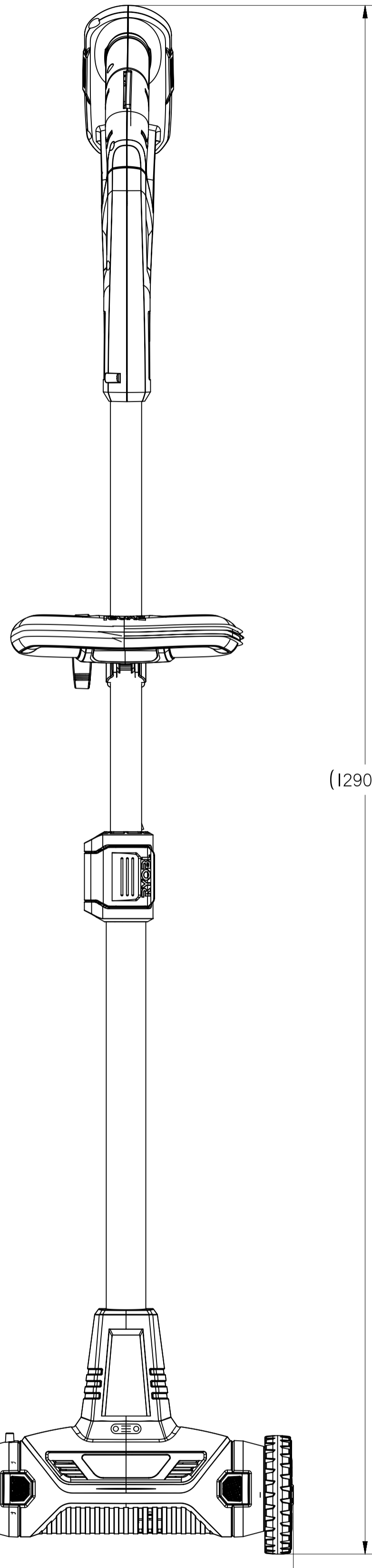
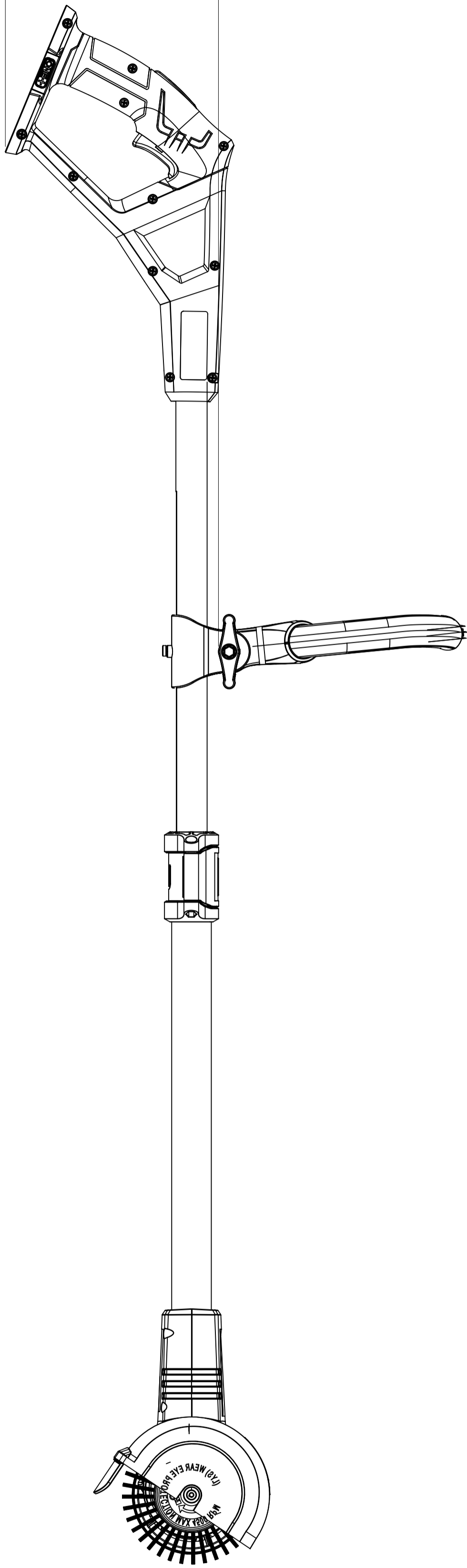
Techtronic Industries Co. Ltd. METRIC UNLESS OTHERWISE SPECIFIED DIMENSIONS ARE IN MILLIMETERS 3RD ANGLE PROJECTION

CONFIDENTIAL PART & PROCESS MUST COMPLY WITH THE COMPANY REQUIREMENTS OF HAZARDOUS SUBSTANCE FREE. SC SAP PIN 107419008 EU, RY18PCA-120 \ RYOBI ONE+ 18V

TECHTRONIC INDUSTRIES COMPANY LIMITED. WEIGHT & TOLERANCE DRAWN BY MODEL NO. CAD TOOL SCALE SHEET SIZE PLM ID REV 1:4 1 OF 3 AI CL00057380 A

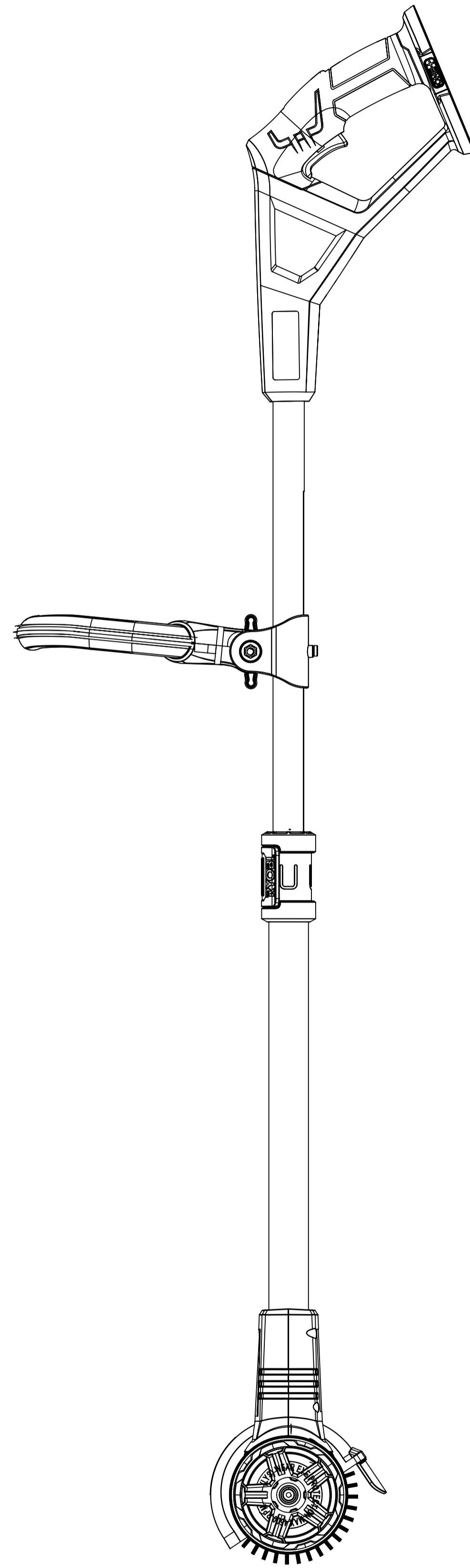
ALL RIGHTS OF DESIGN OR INVENTION ARE RESERVED. COLOR COLOR NAME, COLOR CHIP # BU OP

(177.45)



(1290.22)

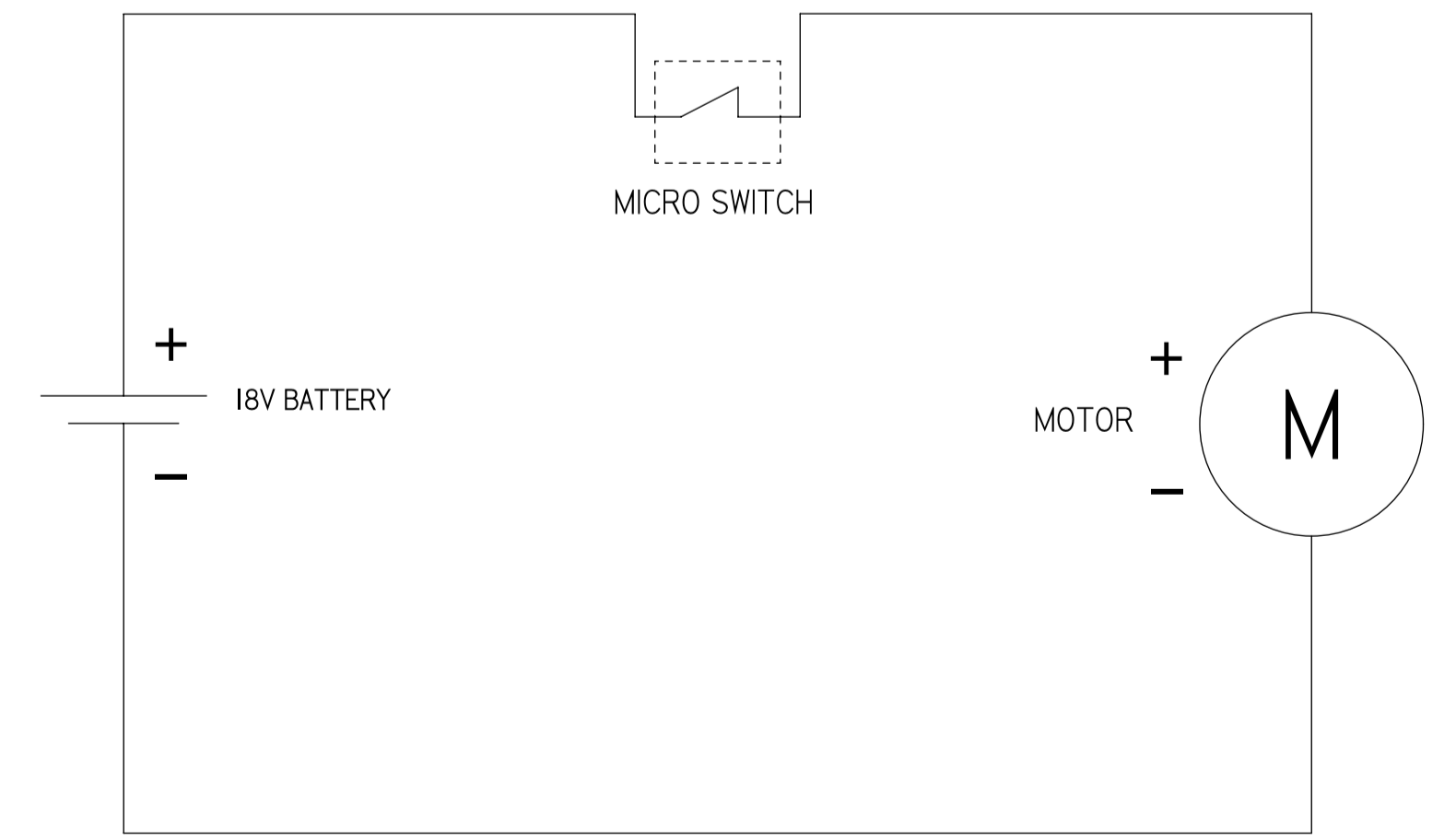
(296.66)



PRELIMINARY

PRELIMINARY

CIRCUIT DRAWING



NOTES: (I)

- (M) 1. REFER TO COMPONENT DRAWING FOR INSPECTION CRITERIA
- 2. SEE QUALITY ASSURANCE FOR ADDRESSING CRITICAL AND MAJOR DIMENSIONS

TOTAL (C) THIS PAGE = 0

TOTAL (M) THIS PAGE = 1