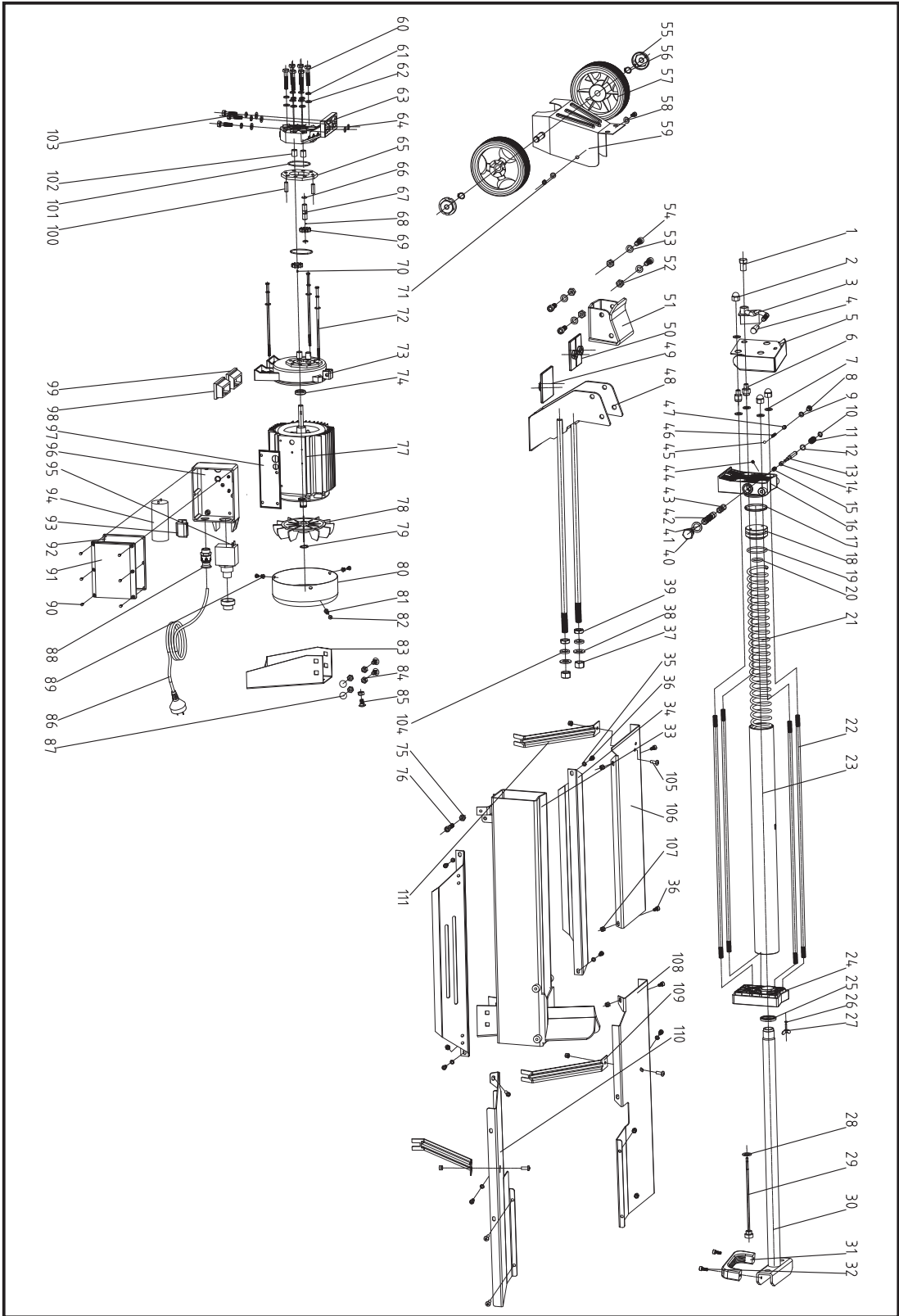


# PARTS SCHEMATIC



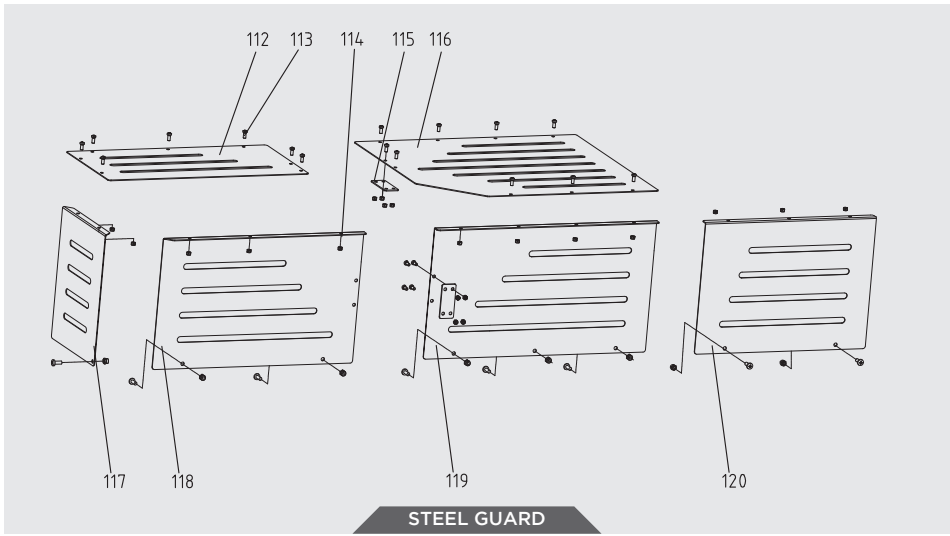
## Parts List

No.	Description	Q'ty
1	Lever Mount Nut	1
2	Cap Nut M10	3
3	Lever	1
4	Lever Knob	1
5	Guard Plate	1
6	Customized Nut	2
7	Copper Gasket 10	4
8	Safety Valve Bolt M8	1
9	O-ring 5.5x2	1
10	Snap Washer 6	1
11	Valve Retract Spring	1
12	O-ring 6x1.5	1
13	Valve Core Rod	1
14	Sliding Sleeve	1
15	Sliding Sleeve Sping	1
16	Alumium Cover (Rear)	1
17	O-ring 50X2.65	1
18	Piston	1
19	Piston Ring 55	1
20	O-ring 32x3.5	1
21	Spring	1
22	Stud Bolt	4
23	Hydraulic Cylinder	1
24	Alumium Cover ( Front)	1
25	Piston Rod Seal 30	1
26	O-ring 7x1.9	1
27	Wing Bolt M5X12	1
28	Wahser Groupware 14	1
29	Dipstick	1
30	Piston Rod	1
31	Lift Handle	1
32	Screw M6X16	2
33	Frame Tube	1
34	Lead plank	2
35	Spring Washer 6	6
36	Screw M6x12	12

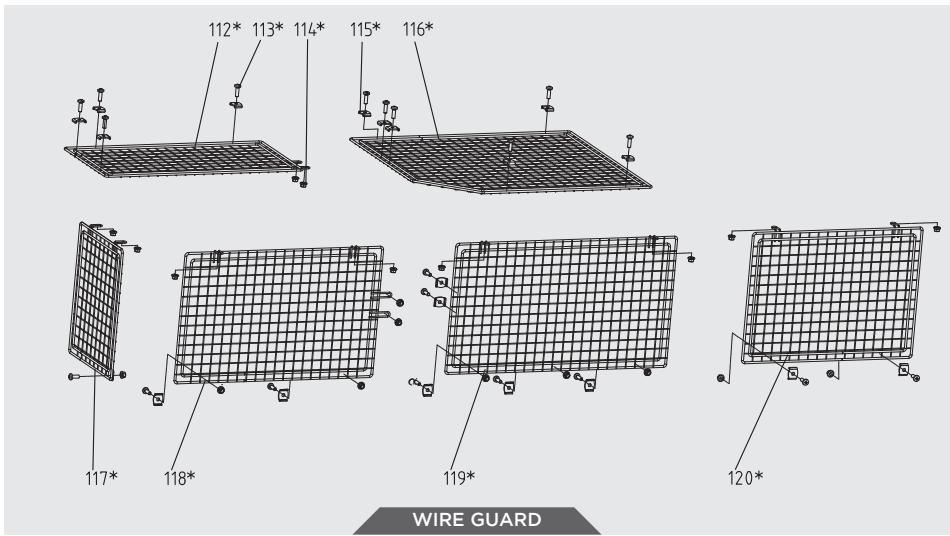
No.	Description	Q'ty
37	Nut M14	2
38	Flat Wahser 14	2
39	Hexagon Thin Nut M14	2
40	Drain Plug	1
41	Washer Groupware 16	1
42	Valve Sleeve	1
43	O-ring 10x2	5
44	Adjusting Screw M5x8	1
45	Steel Ball 6	1
46	Valve Spring	1
47	Adjusting Screw M8x8	1
48	Log Pusher Connection Weldment	1
49	Plastic Insert 1	1
50	Plastic Insert 2	1
51	Log Pusher	1
52	Nut M10	4
53	Flat Wahser 10	5
54	Screw M10x25	4
55	Wheel Cap	2
56	Shaft Circlip A14	2
57	Wheel	2
58	Washer 6	1
59	Wheel Bracket	1
60	Bolt M8x55	6
61	Spring Washer 8	9
62	Washer 8	9
63	Gear Pump Cover	1
64	O-Ring 10.6x2.65	2
65	Gear Housing Plate	1
66	Circlip 10	2
67	Gear Shaft	1
68	Steel Ball 2.5	1
69	Pump Gear	2
70	Pin 2.5x4	1
71	Washer 6	1

No.	Description	Q'ty
72	Bolt M5x180 (For model 65558, 65558-6, 65558-7)	3
	Bolt M5x185 (For model 65553 only)	3
73	Motor Cover	1
74	Seal FB11x26x7	1
75	Nut M8	1
76	Screw M8x35	1
77	Motor	1
78	Motor Fan	1
79	Shaft Circlip A17	1
80	Motor Cover	1
81	Spring Washer 5	6
82	Screw M5X10	3
83	Leg	1
84	Nut M8	5
85	Bolt M8x12	3
86	Cable & plug	1
87	Bolt M8x16	2
88	Cable Gland	1
89	Washer 5	6
90	Screw M4X10	11
91	Switch Box cover	1
92	Airproof Gasket	1
93	Connection Terminal	1

No.	Description	Q'ty
94	Capacitor	1
95	Switch	1
96	Switch Box	1
97	Waterproof Gasket	1
98	Motor Support Left Shoe	1
99	Motor Support Right Shoe	1
100	Pin 8X24	2
101	O-ring 46.2x1.8	2
102	Sliding Sleeve	4
103	Bolt M8x30	3
104	Spring Washer 14 (Model 65553 is none)	2
105	Screw M6X12 (Machine for assembling Steel Guard)	13
	Screw M6X12 (Machine for assembling Wire Guard)	5
106	Guard Bottom Plate	1
107	Locknut M6 (Machine for assembling Steel Guard)	17
	Locknut M6 (Machine for assembling Wire Guard)	9
108	Log Tray 1	1
109	Support Strut 1	2
110	Log Tray 2	1
111	Support Strut 2	1



**STEEL GUARD**



**WIRE GUARD**