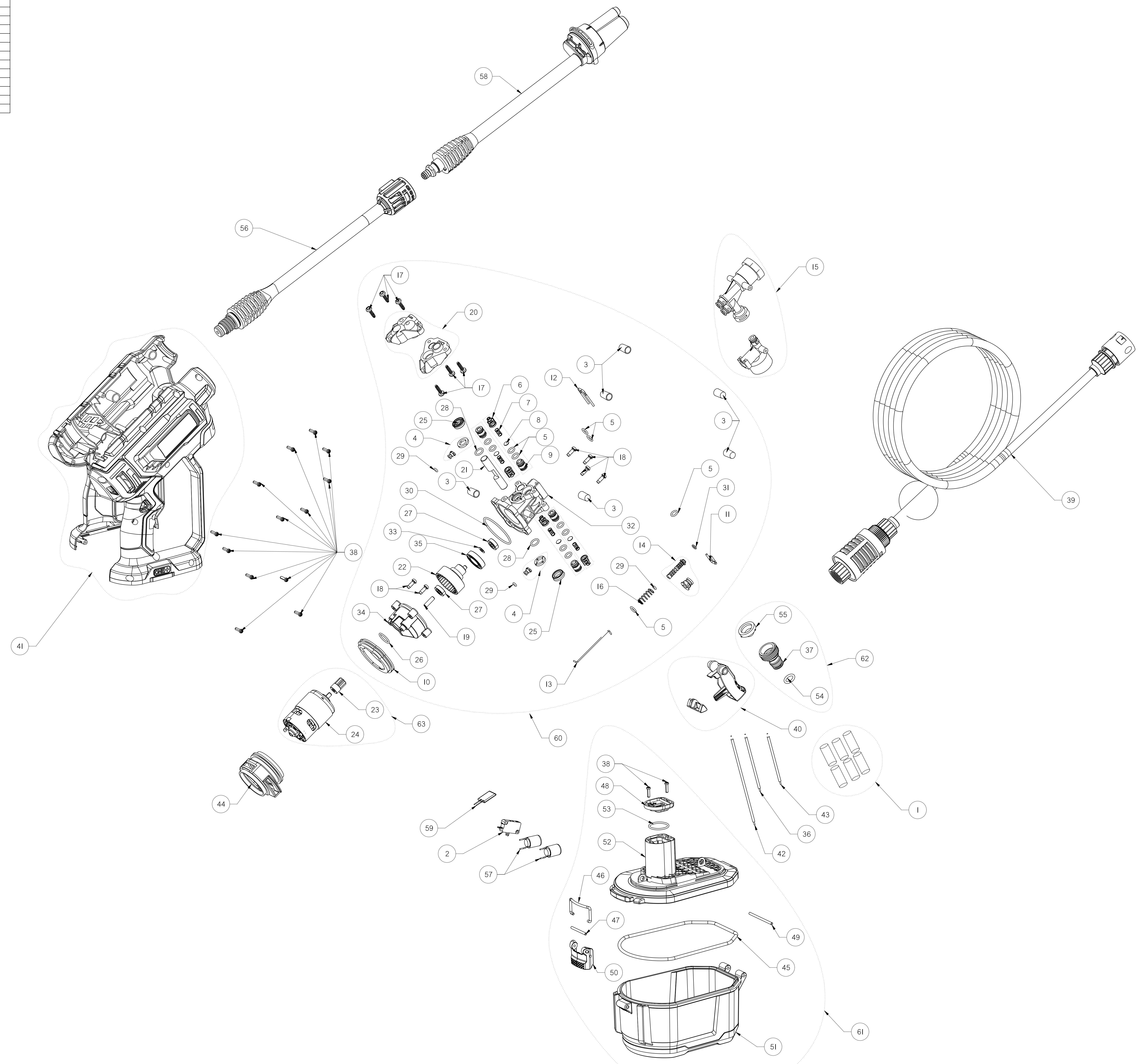


STANDARD TOLERANCE GRADES (ISO 286-11998)	
DIMENSION RANGE	IT 12
0-3	±0.05
3-6	±0.06
6-10	±0.08
10-18	±0.09
18-30	±0.11
30-50	±0.13
50-80	±0.15
80-120	±0.18
120-180	±0.20
180-250	±0.23
250-315	±0.26
315-400	±0.29
400-500	±0.32
500-630	±0.35
630-800	±0.40
800-1000	±0.45

REV	CHANGE DESCRIPTION	ZONE	ECN #	DATE	APV BY
01	DESIGN RELEASE	ANGUS	4/24/2020	4/24/2020	ZQ

PRELIMINARY



ITEM	PIN	QTY	DESCRIPTION	PLM ID	REMARK
63	230417047	1	20V DC MOTOR WITH PINION		
62	205379002	1	ADAPTER ASSY		
61	315927006	1	9AH VERSION BATTERY ENCLOSURE ASSY		
60	205379001	1	PUMP ASSY IWT MOTOR AND OUT IN LEFT LEMEA		
59	870291003	1	FUSE	CL00060031	
58	310448023	1	LOWER LANCE W/ 3 IN 1 NOZZLE ASSEMBLY	CL00050445	
57	850126002	2	ELECTRICAL INDUCTANCE I/H	CL00059035	
56	310448024	1	UPPER LANCE ASSEMBLY	CL00049494	
55	308103009	1	INLET FILTER	30810300900099	
54	570742189	1	O-RING 11.2X2.65	CL00058185	
53	570742187	1	NBR O RING 24X2	CL00051648	
52	527932039	1	RYOBI 18V BATTERY HOLDER	CL00056663	
51	527932038	1	RYOBI 18V BATTERY DOOR	CL00055383	
50	527932016	1	BATT DOOR LATCH	CL00049644	
49	678799030	1	HINGE SHAFT	CL00049646	
48	300001088	1	TERMINAL CONVERSION COVER	CL00050485	
47	678799031	1	LATCH PIN	CL00051874	
46	678799032	1	LATCH LOCKER	CL00051664	
45	570742188	1	O RING SEAL EPDM 144X4.2	CL00058129	
44	561383053	1	MOTOR VENTILATION FOR RYOBI VERSION	CL00058217	
43	290606010	1	WIRE CONTACT THE MOTOR AND MICRO SWITCH	CL00057240	
42	290606009	1	WIRE CONTACT THE MOTOR AND CONTACT ASSY	CL00057239	
41	316841001	1	LEFT&RIGHT HOUSING ASSY ISPL		
40	316841005	1	TRIGGER&TRIGGER LOCK ASSYSPL		
39	308835112	1	SUCTION HOSE	CL00049424	
38	660203087	15	ST SCREW, STEEL CH M3.0X12 PH T10	66020308700099	
37	308751017	1	ADAPTER	CL00058458	
36	290606008	1	WIRE CONNECT THE CONTACT ASSY AND MICRO SWITC	CL00049650	
35	682455001	1	BALL BEARING/RADIAL 15X28X7	CL00057907	
34	641801007	1	GEAR BOX HOUSING	CL00051344	
33	638623005	1	FLAT WASHER	63862300500099	
32	527932009	1	PUMP HOUSING	CL00051425	
31	570742170	1	O-RING 3.8" 1.9	CL00049404	
30	570742167	1	O-RING 46*2	CL00049401	
29	570742171	3	O-RING 2.85*1.8	CL00049406	
28	570742168	2	O-RING 9.5*1.8	CL00049402	
27	682395001	2	BEARING 516*5	CL00049409	
26	570742166	1	O-RING FOR MOTOR SEALING 15*1.8	CL00049400	
25	570464015	2	WATER SEAL ID10XOD16XT5	CL00000307	
24	230417037	1	MOTOR , 20V-DC, OD44MM L60MM 250W , EMC1 0900	CL00058980	
23	611501005	1	PINION	CL00045806	
22	611501007	1	CAMSHAFT & TEETH	CL00057557	
21	678996005	1	PISTON	CL00045809	
20	316841003	1	PUMP HEAD HOUSING LEFT&RIGHT ASSYSPL		
19	642241005	1	AXIS	CL00046346	
18	660165011	6	TAPTITE SCREW, STEEL CH M4 PH S-TYPE TORX T-20	66016501100099	
17	661403028	6	ST SCREW, STEEL PH TORX T20, ST 4.2X15	CL00057607	
16	678857030	1	INLET VALVE SPRING	CL00058405	
15	316841002	1	INLET&OUTLET ASSYSPL		
14	316841006	1	VALVE CAP&PIN ASSYSPL		
13	678799024	1	VALVE ROD	CL00049256	
12	678799034	1	INLET&OUTLET CLIP	CL00058316	
11	678799035	1	VALVE U CLIP	CL00058317	
10	561383045	1	PUMP SLEEVE	CL00049263	
9	522861002	4	ONE-WAY VALVE BASE, EXTENDED	CL00058635	
8	638344005	4	VALVE PLATE	CL00000333	
7	678857031	4	O.2N CHECK VALVE PSRING	CL00058905	
6	522009018	4	VALVE CAGE	CL00058637	
5	570742094	12	O-RING 7.1X1.8	CL00001840	
4	316841004	2	SEAL SUPPORT RING&PUMP HEAD PLUG ASSY SPL		
3	570570002	6	SHOCK ABSORBING BUSHING	57057000200099	
2	760467004	1	MICRO SWITCH	CL00049338	
1	700004001	0.12	SHRINKABLE TUBUL Dia5mm \ BLK ROHS		

Techtronic Industries Co. Ltd. METRIC UNLESS OTHERWISE SPECIFIED 3RD ANGLE PROJECTION

CONFIDENTIAL DIMENSION & TOLERANCE PER ASME Y14.5 - 2009 UNLESS OTHERWISE SPECIFIED REFERENCE CAD MODEL OR DATA FILE PART NAME 090079448 DRAWN BY ANGUS

THIS DRAWING AND DESIGN AND ALL RIGHTS OF DESIGN OR INVENTION ARE RESERVED. PART & PROCESS MUST COMPLY WITH THE COMPANY REQUIREMENTS OF HAZARDOUS SUBSTANCE FREE. TECHTRONIC INDUSTRIES COMPANY LIMITED. DRAWN BY ANGUS

WEIGHT & TOLERANCE COLOR NAME, COLOR CHIP #

BU OP

SCALE: 1:1 SHEET 5 OF 5

MODEL NO. RY18PW22A-0

CL00061447

CL00061447

CL00061447