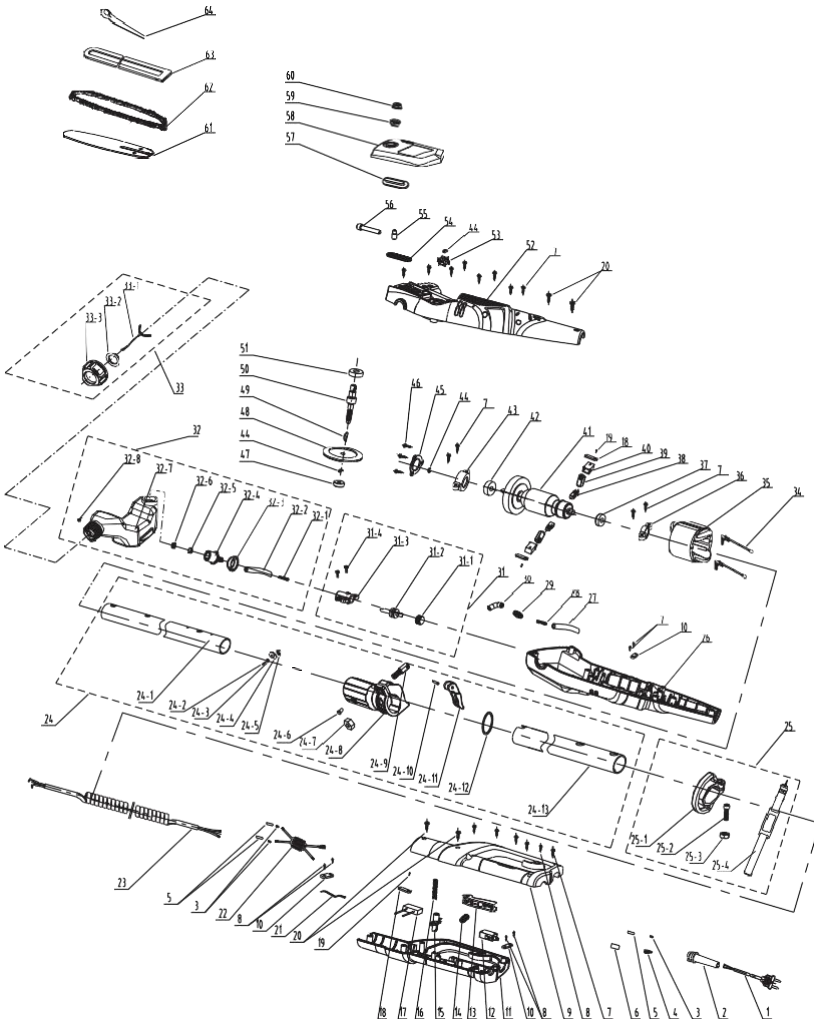


# EXPLODED VIEW WITH PART LIST



## 8.EXPLODED VIEW WITH PART LIST

Exploded no.	Description	Exploded no.	Description	Exploded.no	Description
1	Cable	25-1	The belt ring	45	Bearing pressure plate
2	Cable sleeve	25-2	Screw	46	Screw
3	Copper strip	25-3	Nut	47	Bearing
4	Female Terminal	25-4	Belt	48	Gear
5	Heat shrinkable tube	26	Left housing	49	Woodruff key
6	Heat shrinkable tube	27	Transparent oil tube	50	Output shaft
7	Screw	28	Finalize the spring	51	Bearing
8	Screw	29	Tubing connector	52	Right housing
9	Right handle	30	Rubber connector	53	Sprocket
10	Cable clamp	31	Oil pump assy	54	Oil-out seal ring
11	Left handle	31-1	Worm gear tooth	55	nut
12	Control switch	31-2	Worm gear	56	Tighten screw
13	Switch button	31-3	Oil pump	57	End cap seal ring
14	Spring	31-4	Screw	58	End cover
15	The self-locking button	32	Oil box assy'	59	Spindle cover
16	Theself-lockingbuttonspring	32-1	Finalizethedesignspring	60	Hexagon nut
17	Capacitance	32-2	Transparent oil tube	61	Bar
18	Pressing plate	32-3	Oil outlet seal ring	62	Chain X2
19	Screw	32-4	Oil connector	63	Guide bar sleeve
20	Screw	32-5	Sponge	64	Spanner
21	Binding wire	32-6	End cap		
22	Inductance	32-7	Oil tank		
23	Connection wire	32-8	Valve		
24	The pipe assay'	33	Fuel tank cap assay		
24-1	Middle rube	33-1	Lost the link		
24-2	Screw	33-2	The oil cap seal ring		
24-3	Washer	33-3	The oil cap		
24-4	Flat gasket	34	Connecting wire		
24-5	Six angle lock nut	35	Stator		
24-6	Fixed pin	36	Bearing sleeve		
24-7	Hexagon nut	37	bearing		
24-8	The connection bracket	38	Carbon brush		
24-9	Piece of adjusting bolt	39	Bush		
24-10	Cylindrical pin	40	Brush shell		
24-11	Adjustment of button	41	The rotor assay		
24-12	Ring	42	bearing		
24-13	Tube	43	Bearing sleeve		
25	The belt ring assay'	44	E-ring		