

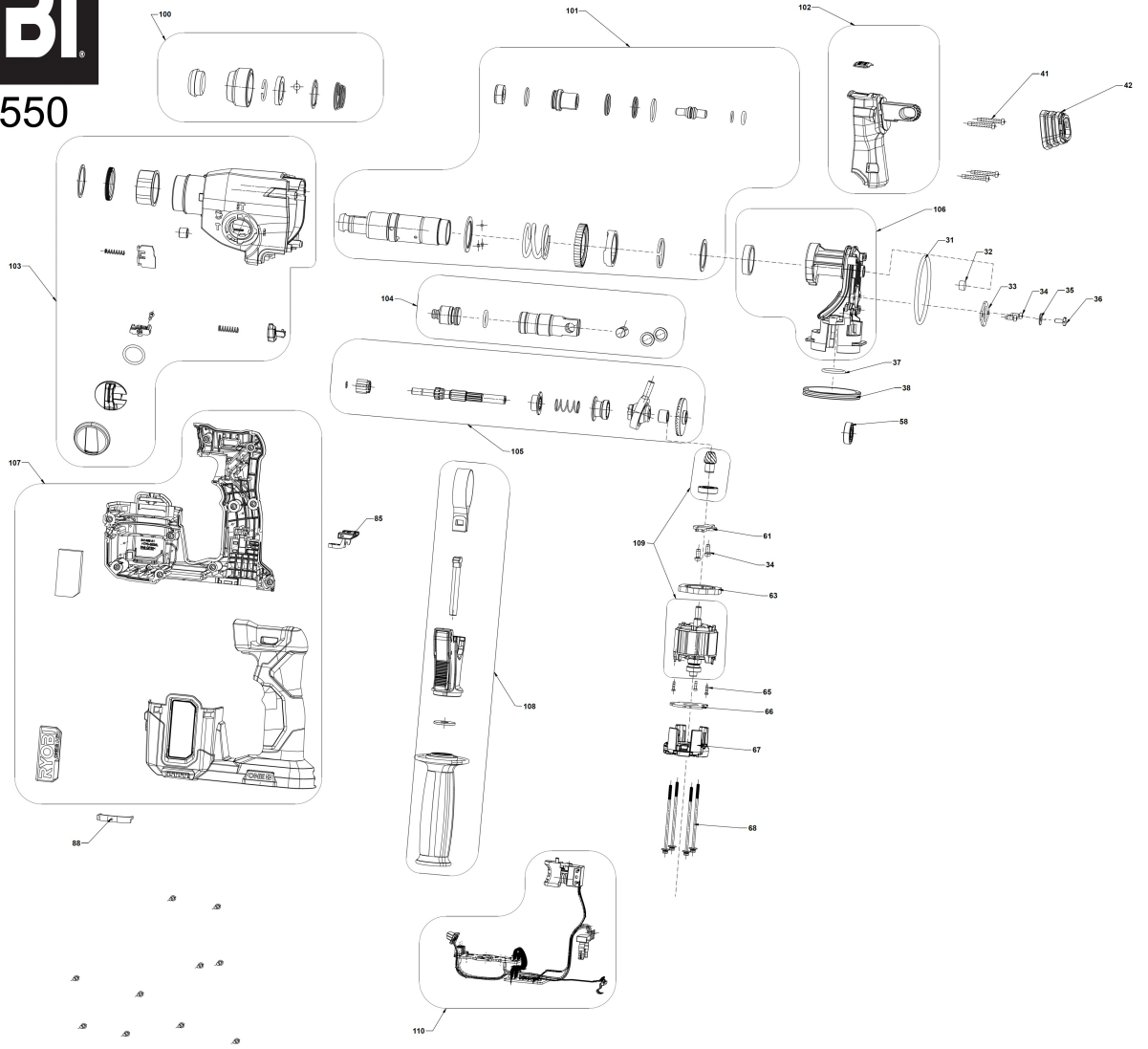
RSDS18X-0 PERFORATEUR BL

5133004620 - RSDS18X-0 - 4000475550



RYOBI

4000475550



Position	Quantité	Désignation	Référence	EAN
1031	1	JOINT THORIQUE	5131044983	4058546399047
1032	1	JOINT DE FEUTRE	5131044984	4058546399054
1033	1	RETAINING PLATE	5131044985	4058546399061
1034	4	VIS	5131033591	4002395148042
1035	1	RONDELLE ID5.0XOD13.0X1.0 EBS1310V	5131001078	4058546080877
1036	1	VIS	5131044986	4058546399078
1037	1	JOINT THORIQUE	5131044987	4058546399085
1038	2	BUTOIR E.CAOUTCHOUC	5131044988	4058546399092
1041	4	VIS	5131044989	4058546399108
1042	1	TAMPON E.CAOUTCHOUC	5131044990	4058546399115
1058	1	ROULEMENT	5131044991	4058546399122
1061	1	RETAINING PLATE	5131044992	4058546399139
1063	1	CALE	5131041186	4058546064501
1065	3	VIS	5131043756	4058546351168
1066	1	RONDELLE	5131044993	4058546399146
1067	1	CHAPEAU DE MOTEUR	5131044994	4058546399153
1068	4	VIS	5131041195	4058546064594
1085	1	BOUTON	5131044995	4058546399160
1088	1	BRIDE INTERMEDIAIRE	5131044996	4058546399177
1100	1	MANDRIN	5131044997	4058546399184
1101	1	BROCHE	5131044998	4058546399191
1102	1	COUVERCLE	5131044999	4058546399207
1103	1	CARTER D'ENGRENAGES	5131045000	4058546399214
1104	1	BROCHE	5131045001	4058546399221
1105	1	PISTON AVEC BIELLE	5131045002	4058546399238
1106	1	CARTER D'ENGRENAGE	5131045003	4058546399245
1107	1	CARTER	5131045004	4058546399252
1108	1	POIGNEE AUXILIAIRE	5131045005	4058546399269
1109	1	MOTEUR	5131045006	4058546399276
1110	1	ELECTRONIQUE	5131045007	4058546399283