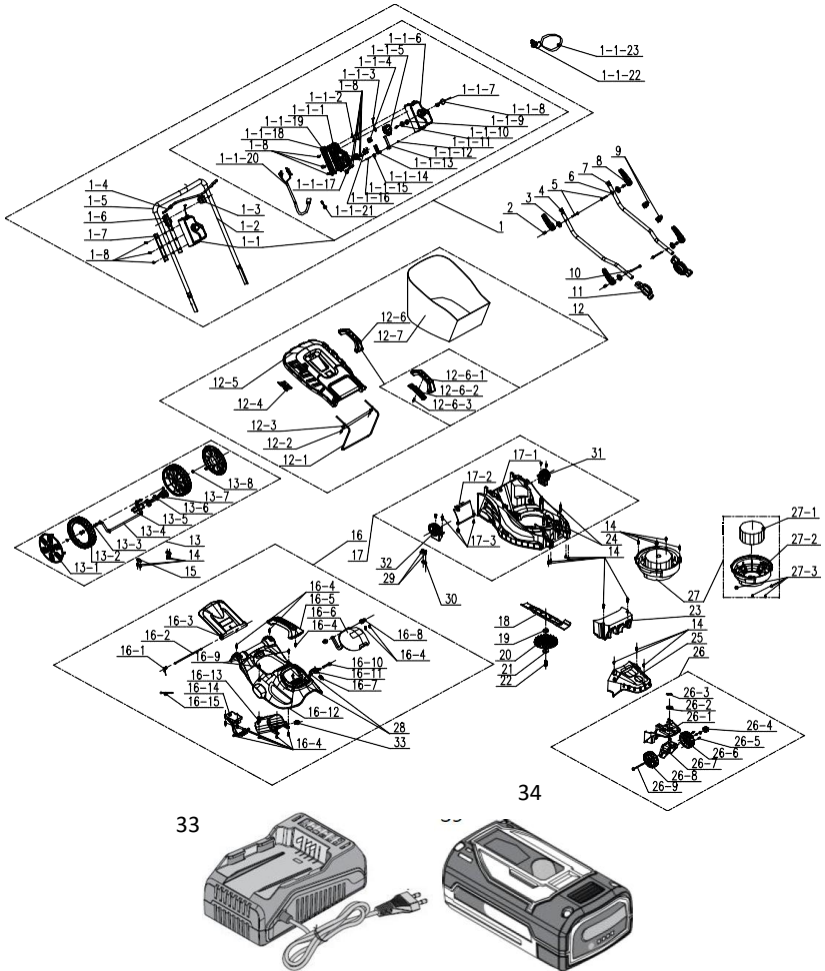


8.3 EXPLODED VIEW



POS	PART NUMBER	DESCRIPTION	NUM
1	A021039-018-00	Handle Assembly	1
1-1	A022034-015-00	Switch Box Component	1
1-1-1	A022034-006-00	Switch Box	1
1-1-2	A021039-021-00	Fixing Plate	1
1-1-3	A021039-028-00	Zip Components	1
1-1-4	8343-510801-02	Trigger Button	1
1-1-5	8042-510902-01	Switch	1
1-1-6	A022034-005-00	Switch Box	1
1-1-7	8342-510505-00	Button Spring	1
1-1-8	8312-519201-00	Button	1

POS	PART NUMBER	DESCRIPTION	NUM
1-1-9	8208-519201-00	Sealing Ring	1
1-1-10	8183-519201-00	Floor	1
1-1-11	8NH-03D01	Nut	1
1-1-12	8183-510906-00	Hook Plate	1
1-1-13	8183-510902-02	Guide Plate	1
1-1-14	8342-510903-00	Twisted Spring	1
1-1-15	8SJAD03-25	Machine Screw	1
1-1-16	8323-510903-00	Key Contact	2
1-1-17	8184-516201-0000110	Cable Clamp	1
1-1-18	A022034-008-00	Holder	1
1-1-19	A022034-007-00	Rear Fixed Seat	1
1-1-20	A022034-009-00	Cable	1
1-1-21	8413-515001-00	Double Terminal Cable	1
1-1-22	8045-513001-00	Key	1
1-1-23	8214-510501-00	Key Straps	1
1-2	A022034-010-00	Push Rod	1
1-3	A021039-011-00	Support	1
1-4	A021039-003-00	Pull Rod	1
1-5	8331-515701-00	Sponge	1
1-6	A021039-010-00	Holder	1
1-7	A021039-009-00	Pipe Sleeve	2
1-8	8206-000001-00	Screw	11
2	8086-513001-00	Pin	4
3	8202-513001-00	Fast Clip Gasket	4
5	8206-513001-00	Bolt	2
8	8003-513003-00	Quick Clamp Handle	4
9	8007-512001-00	Line Deduction	2
10	8206-513002-00	Screw	2
11	A021039-012-00	Adjusting Tooth	2
4	A021039-004-00	Push Rod	1
6	A021039-025-00	Push Rod	1
7	8371-513001-01	Stopcock	2
12	8440-513005-00	Grass Basket Components	1
12-1	8292-513002-00	Support	1
12-2	8SNAB50-16Q	Screw	2

POS	PART NUMBER	DESCRIPTION	NUM
12-3	8WT-05B01	Washer	2
12-4	8181-513001-01	Dashboard	1
12-5	8020-513005-00	Up Cover	1
12-6	8440-512012-00	Handle Assembly	1
12-6-1	8001-512002-00	Grass Basket Handle	1
12-6-2	8020-512006-00	Lower cover	1
12-6-3	8SJAB40-14Q	Screw	1
12-7	8104-513003-00	Clippings Bag	1
13	A021039-020-00	Wheel Shaft Assembly	1
13-1	A021039-015-00	Wheel Cap	2
13-2	8121-511002-02	Rear Wheel	2
13-3	8202-989101-00	Wave Washer	2
13-4	8440-513001-00	Shaft Components	1
13-5	8SQDD05-12D	Bolt	2
13-6	8003-513002-00	Raise The Handle	1
13-7	8NE-05D01	Nut	2
13-8	8CC-10B	Elastic Ring For Shaft	2
14	8SNAB50-16Q	Screw	17
15	8304-511002-00	Axle Positioning Plate	2
16	A022034-016-00	Upper Cover Assembly	1
16-1	8342+513001-01	Spring	1
16-2	8081-513002-00	Rear Cover Shaft	1
16-3	8020-513004-00	Rear Cover	1
16-4	8206-000001-00	Screw	11
16-5	A022033-008-00	Handle	1
16-6	A022034-003-00	Shield	1
16-7	A022033-012-00	Pin	2
16-8	8184-282101-00	Fixing Plate	2
16-9	8206-000001-00	Screw	10
16-10	A022034-011-00	Shaft	1
16-11	8044-780502-00	Button	1
16-12	A022034-002-00	Loam Cake	1
16-13	A022034-004-00	Battery Pack Box	1
16-14	A022034-012-00	Electronic Assembly	1
16-15	236-1004	Binding Wire With	2
17	A021039-022-00	Chassis Components	1

POS	PART NUMBER	DESCRIPTION	NUM
17-1	8006-513001-01	Chassis	1
17-2	8020-513006-00	Bottom Cover	1
17-3	8SNAB50-16Q	Screw	2
19	8334-513002-00	Shaft Sleeve	1
18	8231-513001-03	Blade	1
20	8403-513001-00	Fan Blade	1
21	8186-511003-00	Blade Pressboard	1
22	8206-511001-01	Blade Bolt	1
23	8301-513001-00	Counterweight Block	1
24	8334-911603-00	Cushion Cover	2
25	8020-513003-00	Front Cover	1
26	A021039-023-00	Universal Wheel Assembly	1
26-1	8020-513007-00	Before The Chassis	1
26-2	8324-463101-00	Gasket	1
26-3	8091-940202-00	Pin	1
26-4	A021041-010-00	Knob	1
26-5	8SJAB40-16Q	Screw	3
26-6	8020-513009-00	Right Wheel Cover	1
26-8	8020-513008-00	Left Wheel Cover	1
26-7	A021039-026-00	Stent Components	1
26-9	A021041-018-00	Bolt	1
27	8440-513027-00	Motor Assembly	
27-1	8401-513002-00	Brushless Motor	1
27-2	8141-513021-00	Motor Seat	1
27-3	8SJAN05-16D	Screw	4
28	8SJAB50-75Q	Screw	2
29	8206-000001-00	Screw	2
30	8184-516201-0000110	Braçadeira de cabo	1
31	A021039-013-00	Fixed Tooth	1
32	A021039-032-00	Fixed Tooth	1
33	40VCH1-3A.1	Charge 40V	1
34	40VBA2-50.19	Battery	1