

Revision G:

- Some descriptions have been modified.

OBB723 REVISED EDITION-F is void.

OUTDOOR UNIT

**No. OBB723
REVISED EDITION-G**

PARTS CATALOG

Models

MXZ-3E54VA - E1, E2, ET1, ET2, ER1, ER2

MXZ-3E68VA - E1, E2, ET1, ET2, ER1, ER2

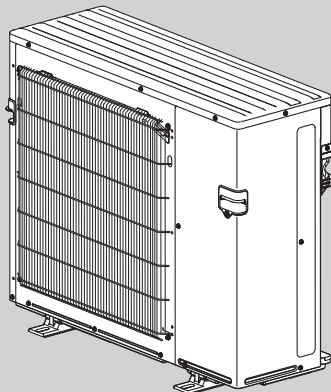
MXZ-4E72VA - E1, E2, ET1, ET2, ER1, ER2

MXZ-4E83VA - E1, E2, E3, E4, ET1, ET2, ET3, ET4, ER1, ER2, ER3

MXZ-5E102VA - E1, E2, E3, E4, ET1, ET2, ET3, ET4, ER1, ER2, ER3

MXZ-2E53VAHZ - E1, E2, ER1, ER2

MXZ-4E83VAHZ - E1, E2, E3, ER1, ER2, ER3



**MXZ-4E83VA
MXZ-5E102VA
MXZ-2E53VAHZ**

CONTENTS

1. SERVICE PARTS LIST..... 2
2. OPTIONAL PARTS..... 36

SERVICE MANUAL (OBH723)

Revision A:

- MXZ-2E53VAHZ- [E1] and MXZ-4E83VAHZ- [E1] have been added.

Revision B:

- MXZ-3E54VA- [E1], [ET1], MXZ-3E68VA- [E1], [ET1], and MXZ-4E72VA- [E1], [ET1] have been added.

Revision C:

- MXZ-3E54VA- [ER1], MXZ-3E68VA- [ER1], MXZ-4E72VA- [ER1], MXZ-4E83VA- [E2], [ET2], [ER1], MXZ-5E102VA- [E2], [ET2], [ER1], MXZ-2E53VAHZ- [ER1] and MXZ-4E83VAHZ- [ER1] have been added.

Revision D:

- MXZ-4E83VA- [E3], [ET3], [ER2], MXZ-5E102VA- [E3], [ET3], [ER2] and MXZ-4E83VAHZ- [E2], [ER2] have been added.

Revision E:

- MXZ-3E54VA- [E2], [ET2], MXZ-3E68VA- [E2], [ET2], MXZ-4E72VA- [E2], [ET2], MXZ-4E83VA- [E4], [ET4], MXZ-5E102VA- [E4], [ET4], MXZ-2E53VAHZ- [E2], and MXZ-4E83VAHZ- [E3] have been added.

Revision F:

- MXZ-3E54VA- [ER2], MXZ-3E68VA- [ER2], MXZ-4E72VA- [ER2], MXZ-4E83VA- [ER3], MXZ-5E102VA- [ER3], MXZ-2E53VAHZ- [ER2] and MXZ-4E83VAHZ- [ER3] have been added.

Revision G:

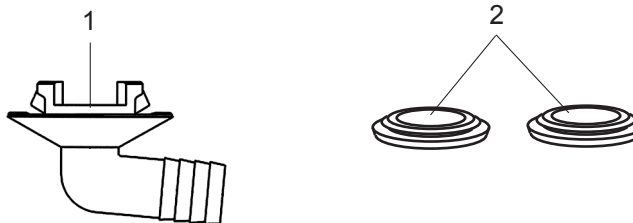
- Some descriptions have been modified.

1

SERVICE PARTS LIST

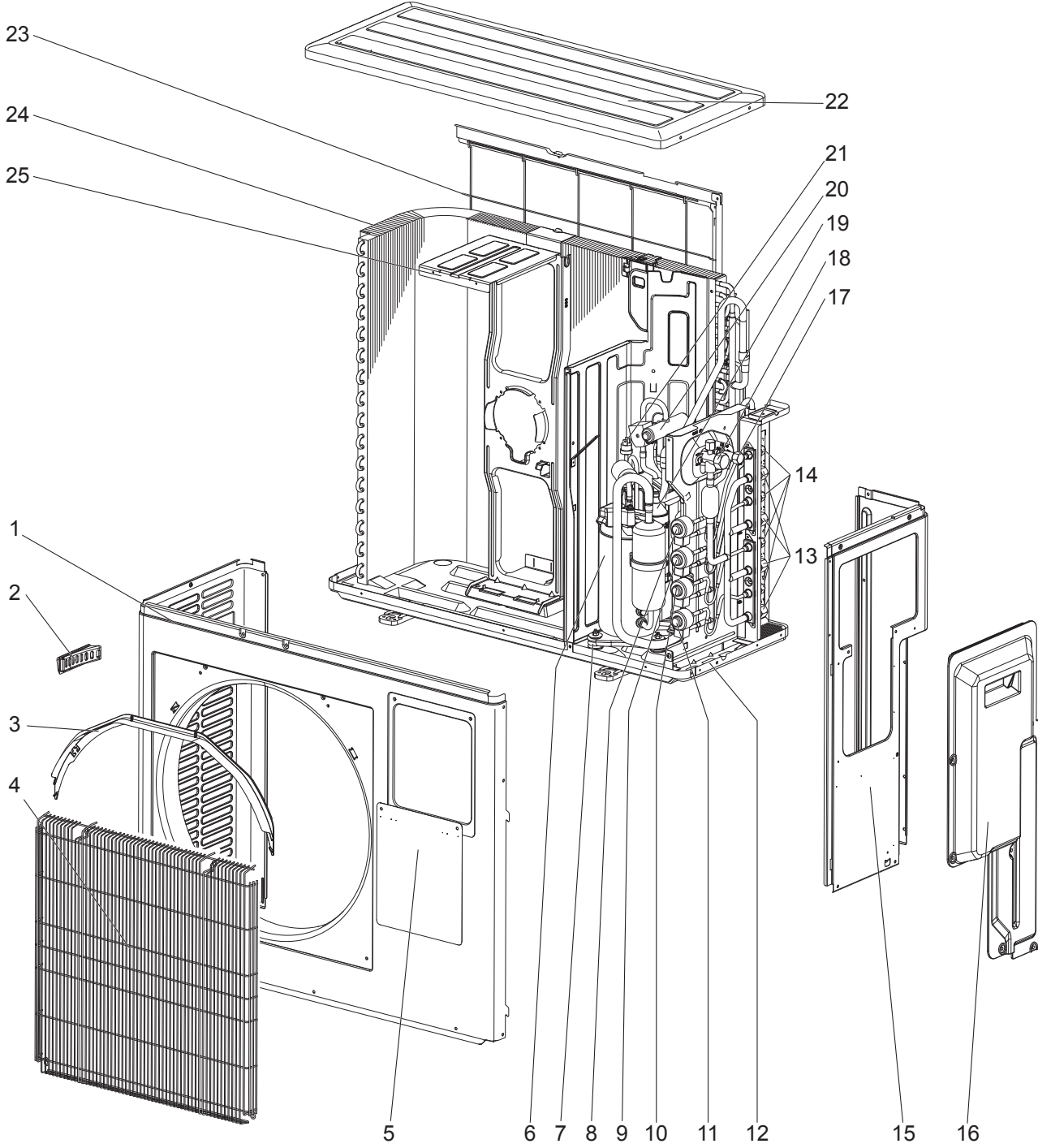
MXZ-3E54VA - [E1], [ET1], [ER1] MXZ-3E68VA - [E1], [ET1], [ER1] MXZ-4E72VA - [E1], [ET1], [ER1]

1-1. ACCESSORY



No.	Part No.	Part Name	Symbol in Wiring Diagram	Q'ty/unit									Remarks	
				MXZ-										
				3E54VA -			3E68VA -			4E72VA -				
				[E1]	[ET1]	[ER1]	[E1]	[ET1]	[ER1]	[E1]	[ET1]	[ER1]		
1	E22 817 704	DRAIN SOCKET		1	1	1	1	1	1	1	1	1	1	
2	E22 444 705	DRAIN CAP		2	2	2	2	2	2	2	2	2	2	

MXZ-3E54VA - [E1], [ET1], [ER1] MXZ-3E68VA - [E1], [ET1], [ER1] MXZ-4E72VA - [E1], [ET1], [ER1]
1-2. OUTDOOR UNIT STRUCTURAL PARTS AND FUNCTIONAL PARTS



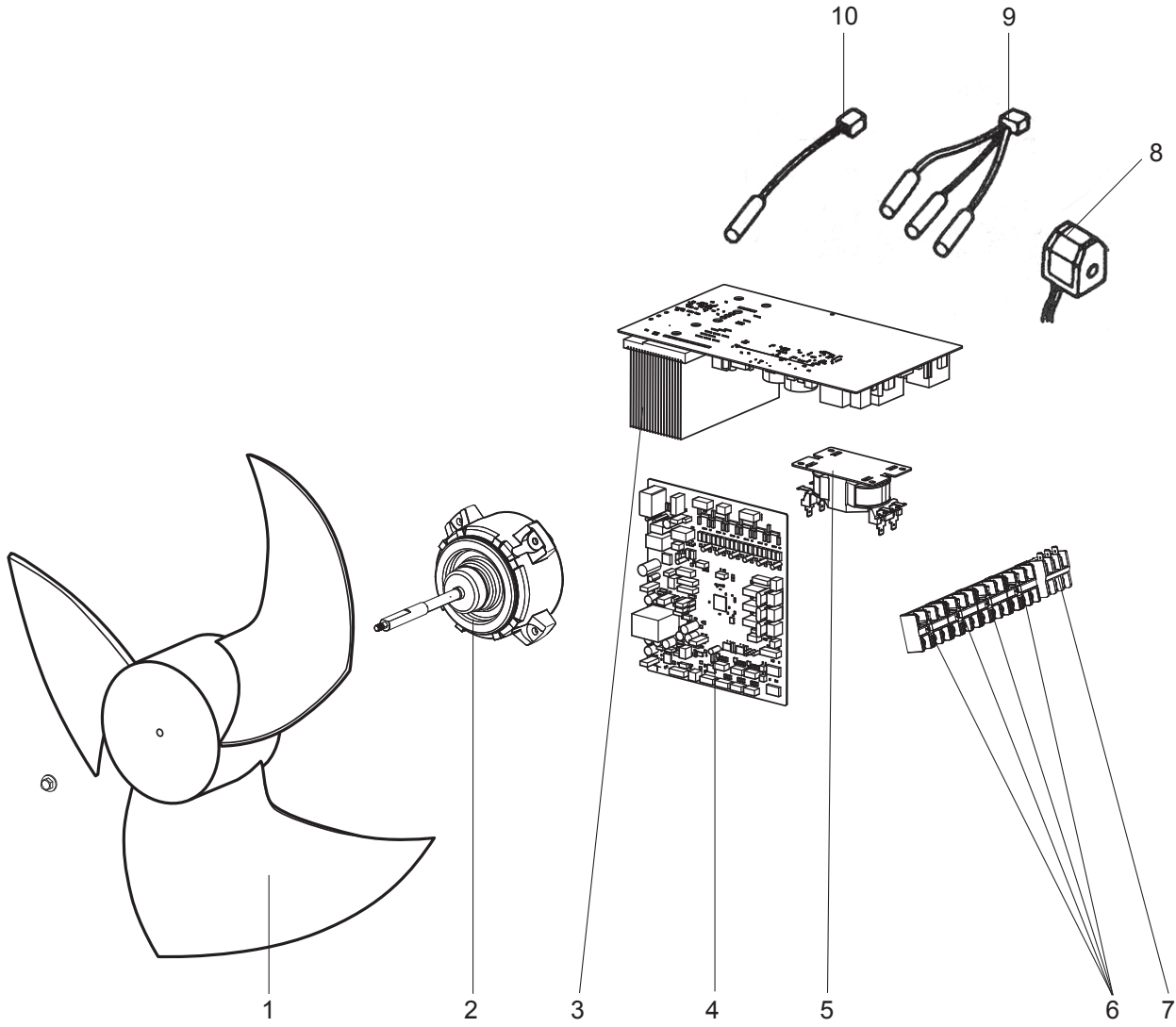
MXZ-3E54VA - E1, ET1, ER1 MXZ-3E68VA - E1, ET1, ER1 MXZ-4E72VA - E1, ET1, ER1

1-2. OUTDOOR UNIT STRUCTURAL PARTS AND FUNCTIONAL PARTS

Part numbers that are circled are not shown in the illustration.

No.	Part No.	Part Name	Symbol in Wiring Diagram	Q'ty/unit									Remarks	
				MXZ-										
				3E54VA -			3E68VA -			4E72VA -				
E1	ET1	ER1	E1	ET1	ER1	E1	ET1	ER1						
1	E22 T07 232	CABINET		1	1	1	1	1	1	1	1	1	1	
2	E22 817 009	HANDLE		1	1	1	1	1	1	1	1	1	1	
3	E22 J69 531	ICE GUARD		1	1	1	1	1	1	1	1	1	1	
4	E22 R24 521	GRILLE		1	1	1	1	1	1	1	1	1	1	
5	E22 T07 246	SUB PANEL		1	1	1	1	1	1	1	1	1	1	
6	E22 F22 900	COMPRESSOR	MC				1	1	1	1	1	1	1	SNB172FEGH1T
6	E22 F10 900	COMPRESSOR	MC	1	1	1								SNB130FGBH1T
7	E22 C34 506	COMPRESSOR RUBBER SET		3	3	3	3	3	3	3	3	3	3	3 RUBBERS SET
8	E22 851 640	EXPANSION VALVE								1	1	1	1	D room
8	E22 R54 493	LEV COIL	LEV D							1	1	1	1	D room
9	E22 851 640	EXPANSION VALVE		1	1	1	1	1	1	1	1	1	1	C room
9	E22 R53 493	LEV COIL	LEV C	1	1	1	1	1	1	1	1	1	1	C room
10	E22 851 640	EXPANSION VALVE		1	1	1	1	1	1	1	1	1	1	B room
10	E22 R52 493	LEV COIL	LEV B	1	1	1	1	1	1	1	1	1	1	B room
11	E22 851 640	EXPANSION VALVE		1	1	1	1	1	1	1	1	1	1	A room
11	E22 R51 493	LEV COIL	LEV A	1	1	1	1	1	1	1	1	1	1	A room
12	E22 T07 290	BASE		1	1	1	1	1	1	1	1	1	1	
13	E22 D36 666	UNION (GAS)		3	3	3	3	3	3	3	3	3	3	Ø9.52
13	E22 D37 666	UNION (GAS)								1	1	1	1	Ø12.7
14	E22 D36 667	UNION (LIQUID)		3	3	3	3	3	3	4	4	4	4	Ø6.35
15	E22 R51 233	BACK PANEL		1	1	1	1	1	1					
15	E22 R52 233	BACK PANEL								1	1	1	1	
16	E22 R51 245	SERVICE PANEL		1	1	1	1	1	1	1	1	1	1	
17	E22 D36 662	STOP VALVE (LIQUID) 3/8		1	1	1	1	1	1	1	1	1	1	Ø9.52
18	E22 D36 661	STOP VALVE (GAS) 5/8		1	1	1	1	1	1	1	1	1	1	Ø15.88
19	E22 J69 299	OIL SEPARATOR		1	1	1	1	1	1	1	1	1	1	
20	E22 C18 961	4-WAY VALVE		1	1	1	1	1	1	1	1	1	1	
21	E22 R24 646	HIGH PRESSURE SWITCH	HPS	1	1	1	1	1	1	1	1	1	1	
22	E22 819 297	TOP PANEL		1	1	1	1	1	1	1	1	1	1	
23	E22 J69 523	REAR GUARD		1	1	1	1	1	1	1	1	1	1	
24	E22 T07 630	OUTDOOR HEAT EXCHANGER		1	1	1	1	1	1	1	1	1	1	
25	E22 J69 515	MOTOR SUPPORT		1	1	1	1	1	1	1	1	1	1	
②6	E22 938 937	CAPILLARY TUBE		8	8	8	8	8	8	8	8	8	8	Ø3.6 × Ø2.4 × 500
②7	E22 939 936	CAPILLARY TUBE		3	3	3	3	3	3	4	4	4	4	Ø4.0 × Ø2.8 × 100
②8	E22 938 936	CAPILLARY TUBE		1	1	1	1	1	1	1	1	1	1	Ø2.5 × Ø0.6 × 1000
②9	E22 C18 959	POWER RECEIVER		1	1	1	1	1	1	1	1	1	1	
③0	E22 853 640	EXPANSION VALVE		1	1	1	1	1	1	1	1	1	1	
③0	E22 T07 493	LEV COIL	LEV R	1	1	1	1	1	1	1	1	1	1	R

MXZ-3E54VA - [E1], [ET1], [ER1] MXZ-3E68VA - [E1], [ET1], [ER1] MXZ-4E72VA - [E1], [ET1], [ER1]
1-3. OUTDOOR UNIT FUNCTIONAL PARTS AND ELECTRICAL PARTS

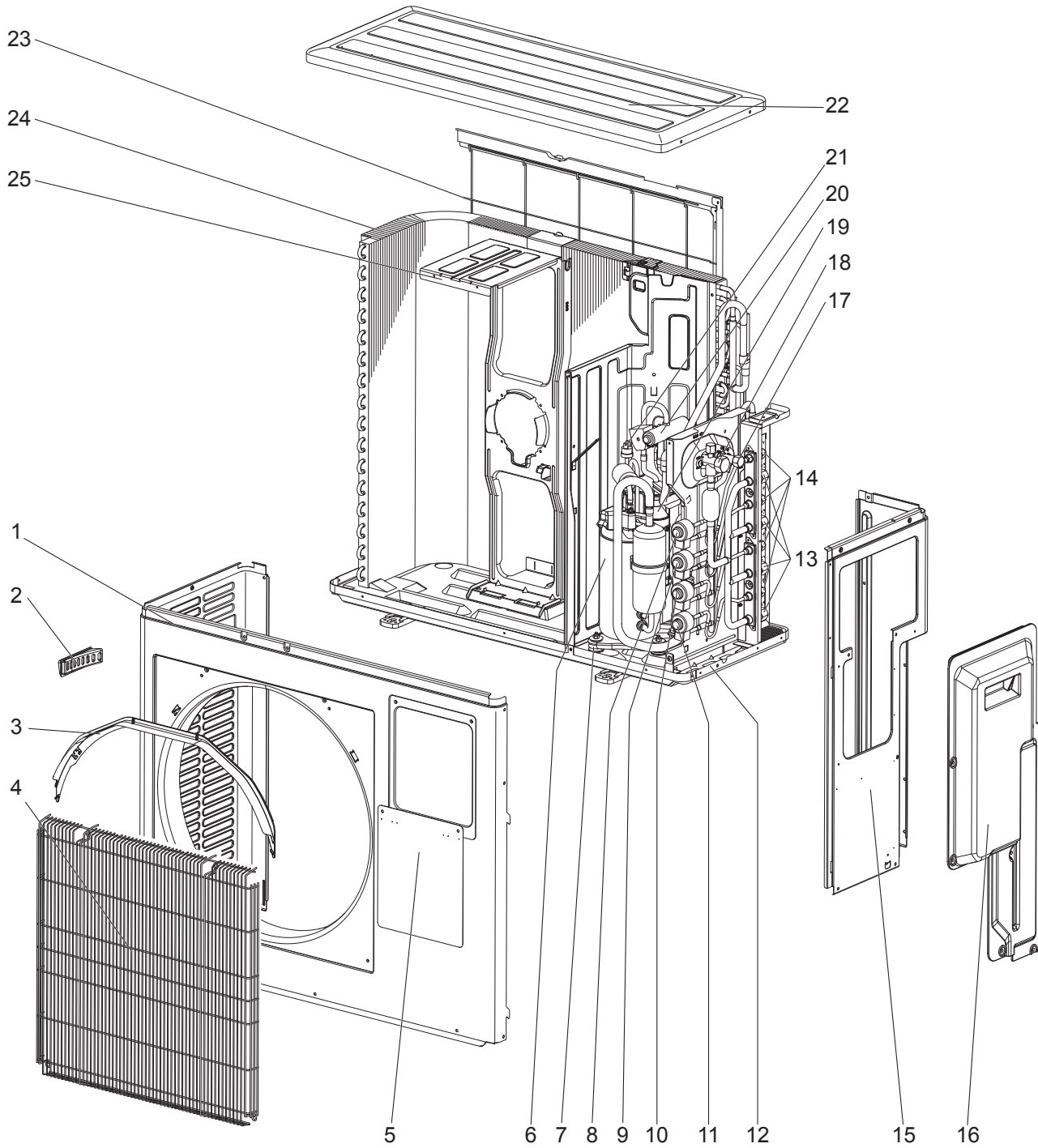


MXZ-3E54VA - [E1], [ET1], [ER1] MXZ-3E68VA - [E1], [ET1], [ER1] MXZ-4E72VA - [E1], [ET1], [ER1]

1-3. OUTDOOR UNIT FUNCTIONAL PARTS AND ELECTRICAL PARTS

No.	Part No.	Part Name	Symbol in Wiring Diagram	Q'ty/unit									Remarks
				MXZ-									
				3E54VA -			3E68VA -			4E72VA -			
				[E1]	[ET1]	[ER1]	[E1]	[ET1]	[ER1]	[E1]	[ET1]	[ER1]	
1	E22 851 501	PROPELLER FAN		1	1	1	1	1	1	1	1	1	
2	E22 R51 301	OUTDOOR FAN MOTOR	MF	1	1	1	1	1	1	1	1	1	SIC-71FW-F764-2
3	E22 T10 440	OUTDOOR POWER P.C. BOARD		1	1	1							Includes heat sink and RT64
3	E22 T07 440	OUTDOOR POWER P.C. BOARD					1	1	1	1	1	1	Includes heat sink and RT64
4	E22 T07 450	OUTDOOR CONTROL P.C. BOARD		1	1	1							
4	E22 T08 450	OUTDOOR CONTROL P.C. BOARD					1	1	1				
4	E22 T09 450	OUTDOOR CONTROL P.C. BOARD								1	1	1	
5	E22 R51 337	REACTOR	L	1	1	1	1	1	1	1	1	1	20A 600μH
6	E22 C92 375	TERMINAL BLOCK	TB2~5	3	3	3	3	3	3	4	4	4	Indoor unit connecting
7	E22 G07 374	TERMINAL BLOCK	TB1	1	1	1	1	1	1	1	1	1	Power supply
8	E22 T07 490	R.V. COIL	21S4	1	1	1	1	1	1	1	1	1	
9	E22 T07 308	THERMISTOR SET	RT61,62,68	1	1	1	1	1	1	1	1	1	DEFROST, DISCHARGE, OUTDOOR HEAT EXCHANGER
10	E22 T07 309	AMBIENT TEMPERATURE THERMISTOR	RT65	1	1	1	1	1	1	1	1	1	

MXZ-3E54VA - E2, ET2, ER2 MXZ-3E68VA - E2, ET2, ER2 MXZ-4E72VA - E2, ET2, ER2
1-4. OUTDOOR UNIT STRUCTURAL PARTS AND FUNCTIONAL PARTS



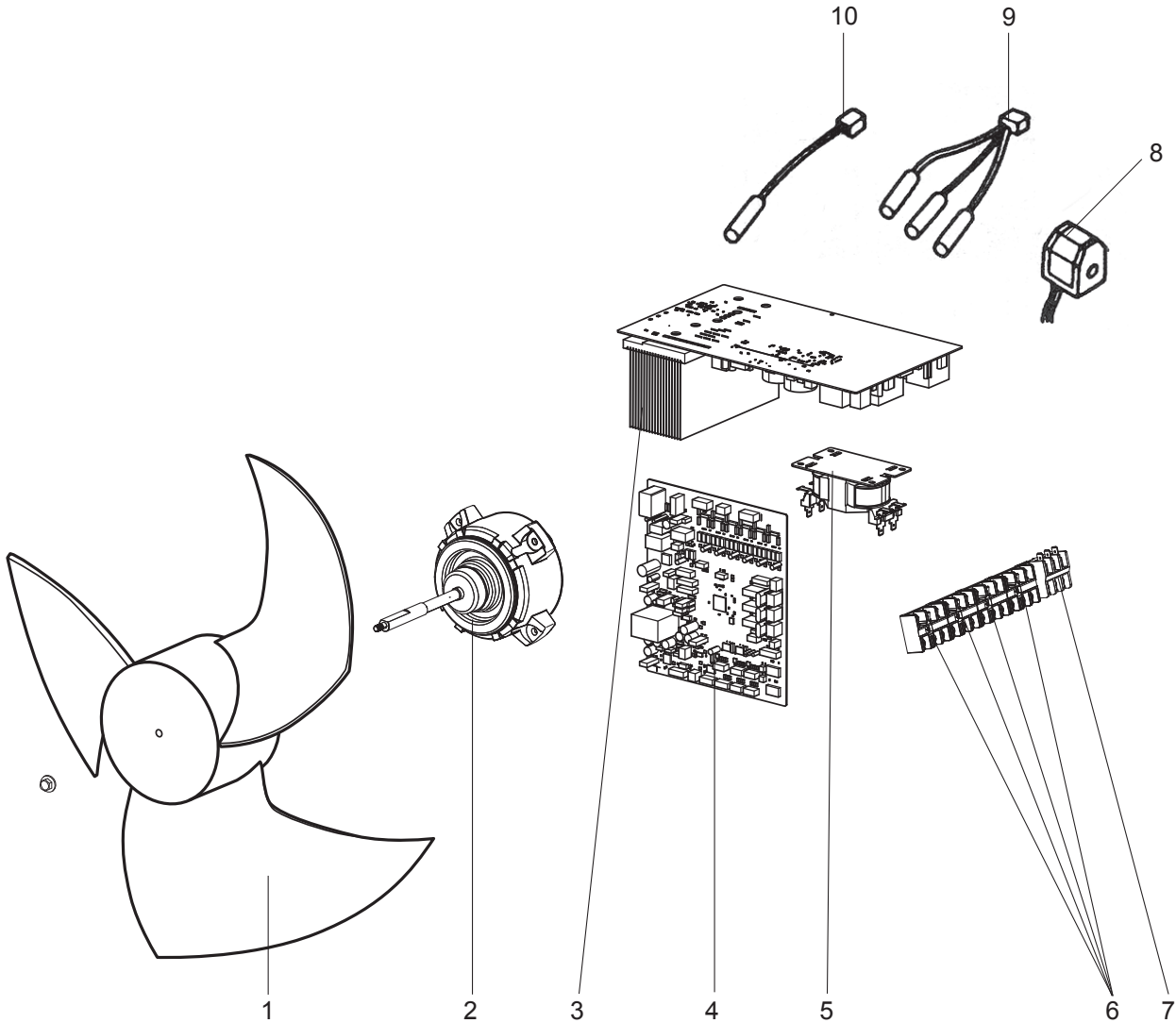
MXZ-3E54VA - E2, ET2, ER2 MXZ-3E68VA - E2, ET2, ER2 MXZ-4E72VA - E2, ET2, ER2

1-4. OUTDOOR UNIT STRUCTURAL PARTS AND FUNCTIONAL PARTS

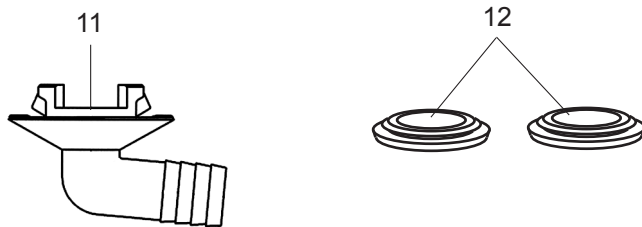
Part numbers that are circled are not shown in the illustration.

No.	Part No.	Part Name	Symbol in Wiring Diagram	Q'ty/unit									Remarks		
				MXZ-											
				3E54VA -			3E68VA -			4E72VA -					
				E2	ET2	ER2	E2	ET2	ER2	E2	ET2	ER2			
1	E22 T07 232	CABINET		1	1	1	1	1	1	1	1	1	1	1	
2	E22 817 009	HANDLE		1	1	1	1	1	1	1	1	1	1	1	
3	E22 J69 531	ICE GUARD		1	1	1	1	1	1	1	1	1	1	1	
4	E22 R24 521	GRILLE		1	1	1	1	1	1	1	1	1	1	1	
5	E22 T07 246	SUB PANEL		1	1	1	1	1	1	1	1	1	1	1	
6	E22 F22 900	COMPRESSOR	MC				1	1	1	1	1	1	1	1	SNB172FEGH1T
6	E22 F10 900	COMPRESSOR	MC	1	1	1									SNB130FGBH1T
7	E22 C34 506	COMPRESSOR RUBBER SET		3	3	3	3	3	3	3	3	3	3	3	3 RUBBERS SET
8	E22 851 640	EXPANSION VALVE									1	1	1	1	D room
	E22 R54 493	LEV COIL	LEV D								1	1	1	1	D room
9	E22 851 640	EXPANSION VALVE		1	1	1	1	1	1	1	1	1	1	1	C room
	E22 R53 493	LEV COIL	LEV C	1	1	1	1	1	1	1	1	1	1	1	C room
10	E22 851 640	EXPANSION VALVE		1	1	1	1	1	1	1	1	1	1	1	B room
	E22 R52 493	LEV COIL	LEV B	1	1	1	1	1	1	1	1	1	1	1	B room
11	E22 851 640	EXPANSION VALVE		1	1	1	1	1	1	1	1	1	1	1	A room
	E22 R51 493	LEV COIL	LEV A	1	1	1	1	1	1	1	1	1	1	1	A room
12	E22 T07 290	BASE		1	1	1	1	1	1	1	1	1	1	1	
13	E22 D36 666	UNION (GAS)		3	3	3	3	3	3	3	3	3	3	3	Ø9.52
13	E22 D37 666	UNION (GAS)									1	1	1	1	Ø12.7
14	E22 D36 667	UNION (LIQUID)		3	3	3	3	3	3	3	4	4	4	4	Ø6.35
15	E22 R51 233	BACK PANEL		1	1	1	1	1	1	1					
15	E22 R52 233	BACK PANEL									1	1	1	1	
16	E22 R51 245	SERVICE PANEL		1	1	1	1	1	1	1	1	1	1	1	
17	E22 D36 662	STOP VALVE (LIQUID) 3/8		1	1	1	1	1	1	1	1	1	1	1	Ø9.52
18	E22 D36 661	STOP VALVE (GAS) 5/8		1	1	1	1	1	1	1	1	1	1	1	Ø15.88
19	E22 J69 299	OIL SEPARATOR		1	1	1	1	1	1	1	1	1	1	1	
20	E22 C18 961	4-WAY VALVE		1	1	1	1	1	1	1	1	1	1	1	
21	E22 R24 646	HIGH PRESSURE SWITCH	HPS	1	1	1	1	1	1	1	1	1	1	1	
22	E22 819 297	TOP PANEL		1	1	1	1	1	1	1	1	1	1	1	
23	E22 J69 523	REAR GUARD		1	1	1	1	1	1	1	1	1	1	1	
24	E22 T07 630	OUTDOOR HEAT EXCHANGER		1	1	1	1	1	1	1	1	1	1	1	
25	E22 J69 515	MOTOR SUPPORT		1	1	1	1	1	1	1	1	1	1	1	
26	E22 938 937	CAPILLARY TUBE		8	8	8	8	8	8	8	8	8	8	8	Ø3.6 × Ø2.4 × 500
27	E22 939 936	CAPILLARY TUBE		3	3	3	3	3	3	3	4	4	4	4	Ø4.0 × Ø2.8 × 100
28	E22 938 936	CAPILLARY TUBE		1	1	1	1	1	1	1	1	1	1	1	Ø2.5 × Ø0.6 × 1000
29	E22 C18 959	POWER RECEIVER		1	1	1	1	1	1	1	1	1	1	1	
30	E22 853 640	EXPANSION VALVE		1	1	1	1	1	1	1	1	1	1	1	
30	E22 T07 493	LEV COIL	LEV R	1	1	1	1	1	1	1	1	1	1	1	R

MXZ-3E54VA - [E2], [ET2], [ER2] MXZ-3E68VA - [E2], [ET2], [ER2] MXZ-4E72VA - [E2], [ET2], [ER2]
1-5. OUTDOOR UNIT FUNCTIONAL PARTS AND ELECTRICAL PARTS



1-6. ACCESSORY



MXZ-3E54VA - [E2], [ET2], [ER2] MXZ-3E68VA - [E2], [ET2], [ER2] MXZ-4E72VA - [E2], [ET2], [ER2]

1-5. OUTDOOR UNIT FUNCTIONAL PARTS AND ELECTRICAL PARTS

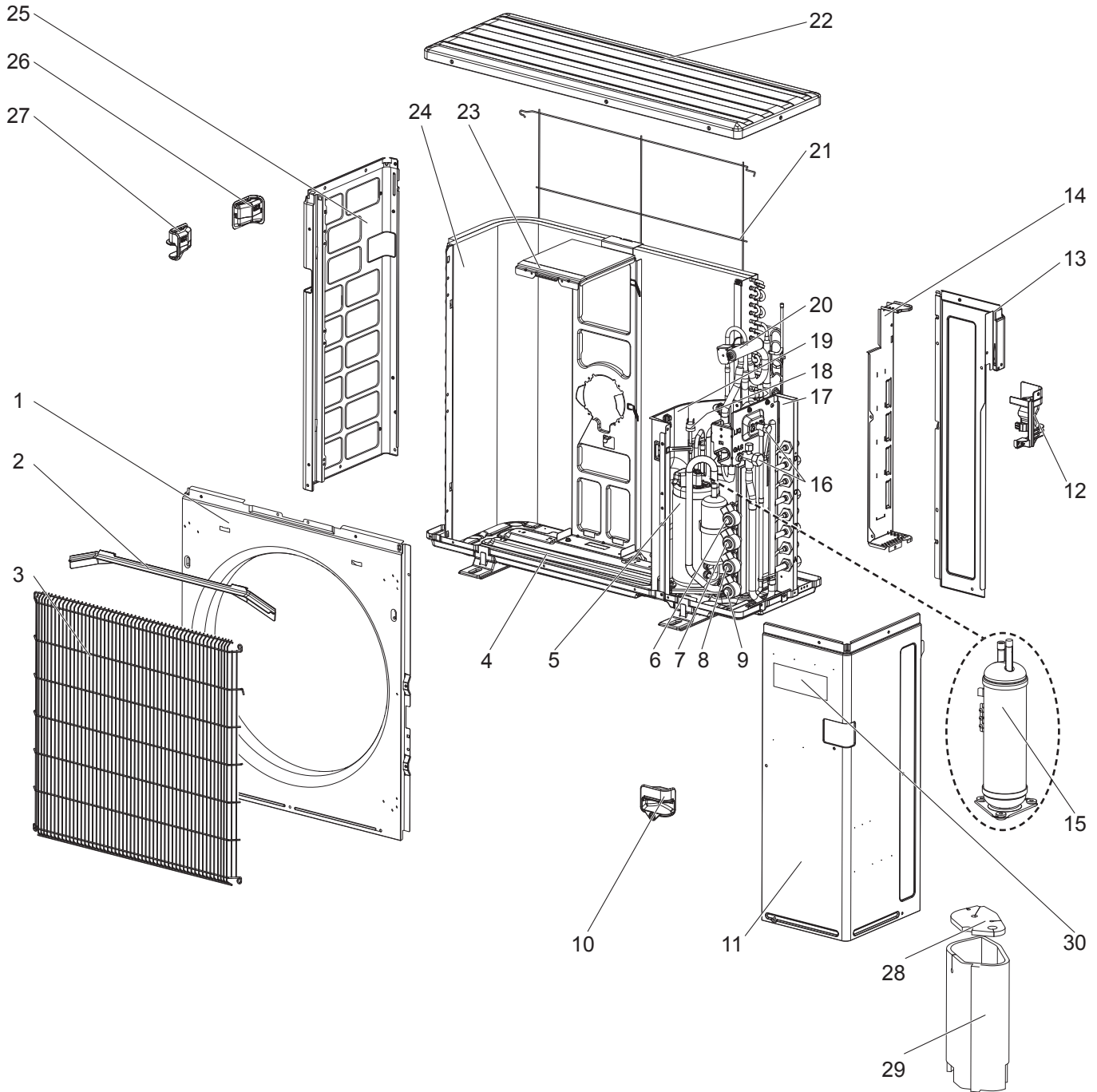
No.	Part No.	Part Name	Symbol in Wiring Diagram	Q'ty/unit									Remarks
				MXZ-									
				3E54VA -			3E68VA -			4E72VA -			
				[E2]	[ET2]	[ER2]	[E2]	[ET2]	[ER2]	[E2]	[ET2]	[ER2]	
1	E22 851 501	PROPELLER FAN		1	1	1	1	1	1	1	1	1	
2	E22 16B 301	OUTDOOR FAN MOTOR	MF	1	1	1	1	1	1	1	1	1	SIC-82FX-F764-1
3	E22 49D 440	OUTDOOR POWER P.C. BOARD		1	1	1							Includes heat sink and RT64
3	E22 51D 440	OUTDOOR POWER P.C. BOARD					1	1	1	1	1	1	Includes heat sink and RT64
4	E22 49D 450	OUTDOOR CONTROL P.C. BOARD		1	1	1							
4	E22 50D 450	OUTDOOR CONTROL P.C. BOARD					1	1	1				
4	E22 51D 450	OUTDOOR CONTROL P.C. BOARD								1	1	1	
5	E22 R51 337	REACTOR	L	1	1	1	1	1	1	1	1	1	20A 600μH
6	E22 C92 375	TERMINAL BLOCK	TB2~5	3	3	3	3	3	3	4	4	4	Indoor unit connecting
7	E22 G07 374	TERMINAL BLOCK	TB1	1	1	1	1	1	1	1	1	1	Power supply
8	E22 T07 490	R.V. COIL	21S4	1	1	1	1	1	1	1	1	1	
9	E22 T07 308	THERMISTOR SET	RT61,62,68	1	1	1	1	1	1	1	1	1	DEFROST, DISCHARGE, OUTDOOR HEAT EXCHANGER
10	E22 T07 309	AMBIENT TEMPERATURE THERMISTOR	RT65	1	1	1	1	1	1	1	1	1	

1-6. ACCESSORY

No.	Part No.	Part Name	Symbol in Wiring Diagram	Q'ty/unit									Remarks
				MXZ-									
				3E54VA -			3E68VA -			4E72VA -			
				[E2]	[ET2]	[ER2]	[E2]	[ET2]	[ER2]	[E2]	[ET2]	[ER2]	
11	E22 817 704	DRAIN SOCKET		1	1	1	1	1	1	1	1	1	
12	E22 444 705	DRAIN CAP		2	2	2	2	2	2	2	2	2	

MXZ-4E83VA - E1, E2, ET1, ET2, ER1

1-7. OUTDOOR UNIT STRUCTURAL PARTS AND FUNCTIONAL PARTS



MXZ-4E83VA - [E1], [E2], [ET1], [ET2], [ER1]

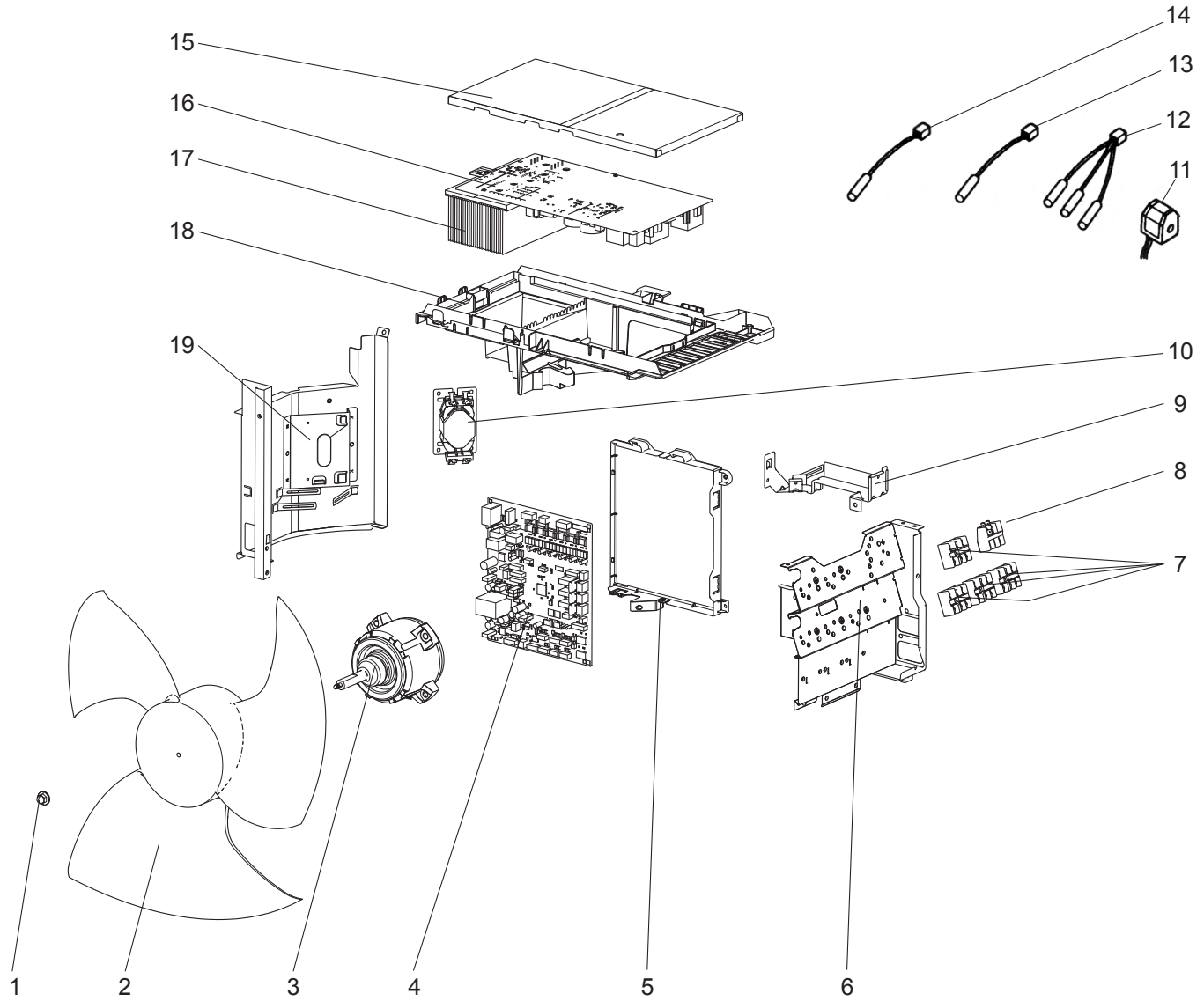
1-7. OUTDOOR UNIT STRUCTURAL PARTS AND FUNCTIONAL PARTS

Part number that is circled is not shown in the illustration.

No.	Part No.	Part Name	Symbol in Wiring Diagram	Q'ty/unit					Remarks
				MXZ-4E83VA-					
				[E1]	[E2]	[ET1]	[ET2]	[ER1]	
1	T7W E22 668	FRONT PANEL		1	1	1	1	1	
2	R01 E02 631	ICE GUARD		1	1	1	1	1	
3	T7W E09 691	WIRE GRILLE		1	1	1	1	1	
4	T7W E24 686	BASE ASSEMBLY		1		1		1	
4	T7W E25 686	BASE ASSEMBLY			1		1		
5	T97 420 607	COMPRESSOR	MC	1	1	1	1	1	SNB220FAGMC, Includes RUBBER MOUNTS
6	T7W E59 401	EXPANSION VALVE ASSEMBLY		1	1	1	1	1	D room, Includes UNION AND CAPILLARY TUBE
	T7W E81 242	LEV COIL	LEV D	1	1	1	1	1	D room, Connector: YELLOW
7	T7W E58 401	EXPANSION VALVE ASSEMBLY		1	1	1	1	1	C room, Includes UNION AND CAPILLARY TUBE
	T7W E80 242	LEV COIL	LEV C	1	1	1	1	1	C room Connector: BLUE
8	T7W E57 401	EXPANSION VALVE ASSEMBLY		1	1	1	1	1	B room, Includes UNION AND CAPILLARY TUBE
	T7W E79 242	LEV COIL	LEV B	1	1	1	1	1	B room, Connector: RED
9	T7W E56 401	EXPANSION VALVE ASSEMBLY		1	1	1	1	1	A room, Includes UNION AND CAPILLARY TUBE
	T7W E78 242	LEV COIL	LEV A	1	1	1	1	1	A room, Connector: WHITE
10	T7W A02 655	HANDLE (R FRONT)		1	1	1	1	1	
11	T7W E23 667	SERVICE PANEL		1	1	1	1	1	
12	T7W A04 655	HANDLE (R REAR)		1	1	1	1	1	
13	T7W E11 682	REAR PANEL		1	1	1	1	1	
14	T7W E39 661	BACK PILLAR		1	1	1	1	1	
15	T7W E27 440	ACCUMULATOR		1	1	1	1	1	
16	T7W E07 410	STOP VALVE ASSEMBLY		1	1	1	1	1	Includes both VALVES
17	-	UNION BED		1	1	1	1	1	DWG. No. WQ02A059G14
18	T7W E01 208	HIGH PRESSURE SWITCH	HPS	1	1	1	1	1	4.41 MPa
19	-	SEPARATOR		1	1	1	1	1	DWG. No. WQ00C142G02
20	T7W E06 403	4-WAY VALVE		1	1	1	1	1	
21	T7W E06 698	REAR GUARD		1	1	1	1	1	
22	T7W E14 641	TOP PANEL		1	1	1	1	1	
23	T7W E17 130	MOTOR SUPPORT		1	1	1	1	1	
24	T7W E75 408	OUTDOOR HEAT EXCHANGER		1	1	1	1	1	Includes CAPILLARY TUBES AND DISTRIBUTOR
25	T7W E11 662	SIDE PANEL (L)		1	1	1	1	1	
26	T7W A01 655	HANDLE (REAR)		1	1	1	1	1	
27	T7W A00 655	HANDLE (FRONT)		1	1	1	1	1	
28	T7W A01 602	COMPRESSOR FELT (TOP)		1	1	1	1	1	
29	T7W A00 602	COMPRESSOR FELT (BODY)		1	1	1	1	1	
30	T7W A01 005	BRAND LABEL		1	1	1	1	1	
(31)	T7W A00 508	DAMPER SET		1	1	1	1	1	2 PCS SET 95 x 250 T2 (mm)

MXZ-4E83VA - [E1], [E2], [ET1], [ET2], [ER1]

1-8. OUTDOOR UNIT FUNCTIONAL PARTS AND ELECTRICAL PARTS



MXZ-4E83VA - [E1], [E2], [ET1], [ET2], [ER1]

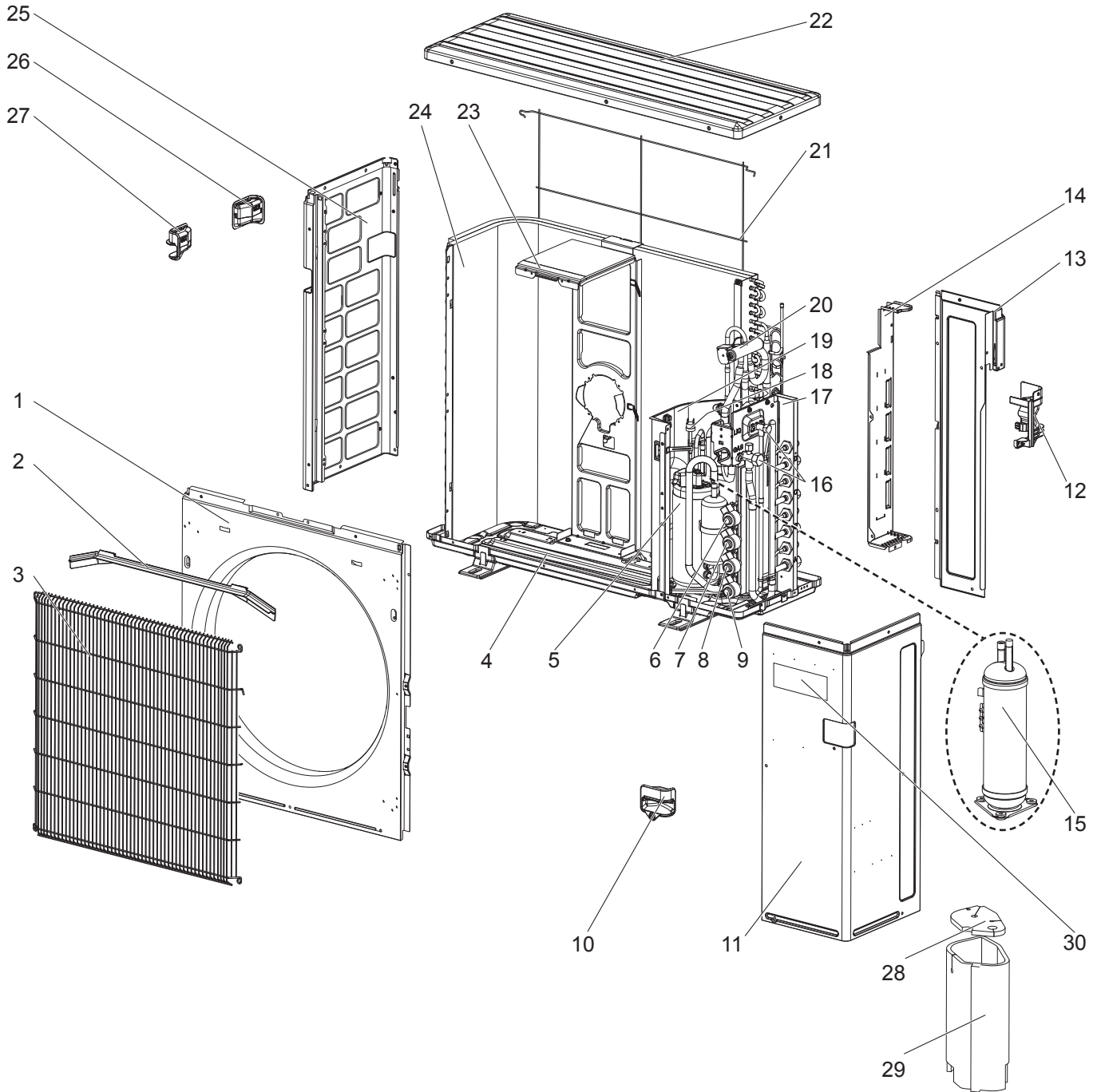
1-8. OUTDOOR UNIT FUNCTIONAL PARTS AND ELECTRICAL PARTS

Part number that is circled is not shown in the illustration.

No.	Part No.	Part Name	Symbol in Wiring Diagram	Q'ty/unit					Remarks
				MXZ-4E83VA-					
				[E1]	[E2]	[ET1]	[ET2]	[ER1]	
1	R01 E09 097	PROPELLER FAN NUT		1	1	1	1	1	
2	T7W A00 115	PROPELLER FAN		1	1	1	1	1	
3	T7W A02 221	OUTDOOR FAN MOTOR	MF	1		1			
3	T7W A09 221	OUTDOOR FAN MOTOR	MF		1		1	1	
4	T7W GP0 315	OUTDOOR CONTROL P.C. BOARD		1		1			
4	T7W H10 315	OUTDOOR CONTROL P.C. BOARD			1		1	1	
5	T7W A02 327	CB HOLDER		1	1	1	1	1	
6	-	ELECTRICAL PARTS BOX RIGHT		1	1	1	1	1	DWG. No. WM00B522G08
7	T7W E13 716	TERMINAL BLOCK	TB2,3,4,5	4	4	4	4	4	INDOOR UNIT CONNECTING 3P (S1, S2, S3)
8	T7W E65 716	TERMINAL BLOCK	TB1	1	1	1	1	1	POWER SUPPLY 3P (L, N, ⊕)
9	-	UNDER FRAME		1	1	1	1	1	DWG. No. WM00C604G01
10	T7W E25 259	REACTOR	L	1	1	1	1	1	
11	T7W E83 242	R.V. COIL	21S4	1	1	1	1	1	
12	T7W E71 202	THERMISTOR	RT61,62,68	1	1	1	1	1	DEFROST, DISCHARGE, OUTDOOR HEAT EXCHANGER
13	T7W E72 202	THERMISTOR	RT65	1	1	1	1	1	AMBIENT
14	R01 E99 202	THERMISTOR	RT64	1	1	1	1	1	FIN (HEAT SINK)
15	T7W A00 325	PB COVER		1	1	1	1	1	
16	T7W AW0 323	OUTDOOR POWER P.C. BOARD		1	1	1	1	1	
17	T7W A03 371	HEAT SINK		1	1	1	1	1	
18	T7W A00 327	PB HOLDER		1	1	1	1	1	
19	-	ELECTRICAL PARTS BOX LEFT		1	1	1	1	1	DWG. No. WM00B521G06
(20)	T7W A00 510	COMPRESSOR LEAD ASSEMBLY SET		1	1	1	1	1	

MXZ-4E83VA - E3, E4, ET3, ET4, ER2, ER3

1-9. OUTDOOR UNIT STRUCTURAL PARTS AND FUNCTIONAL PARTS



MXZ-4E83VA - E3, E4, ET3, ET4, ER2, ER3

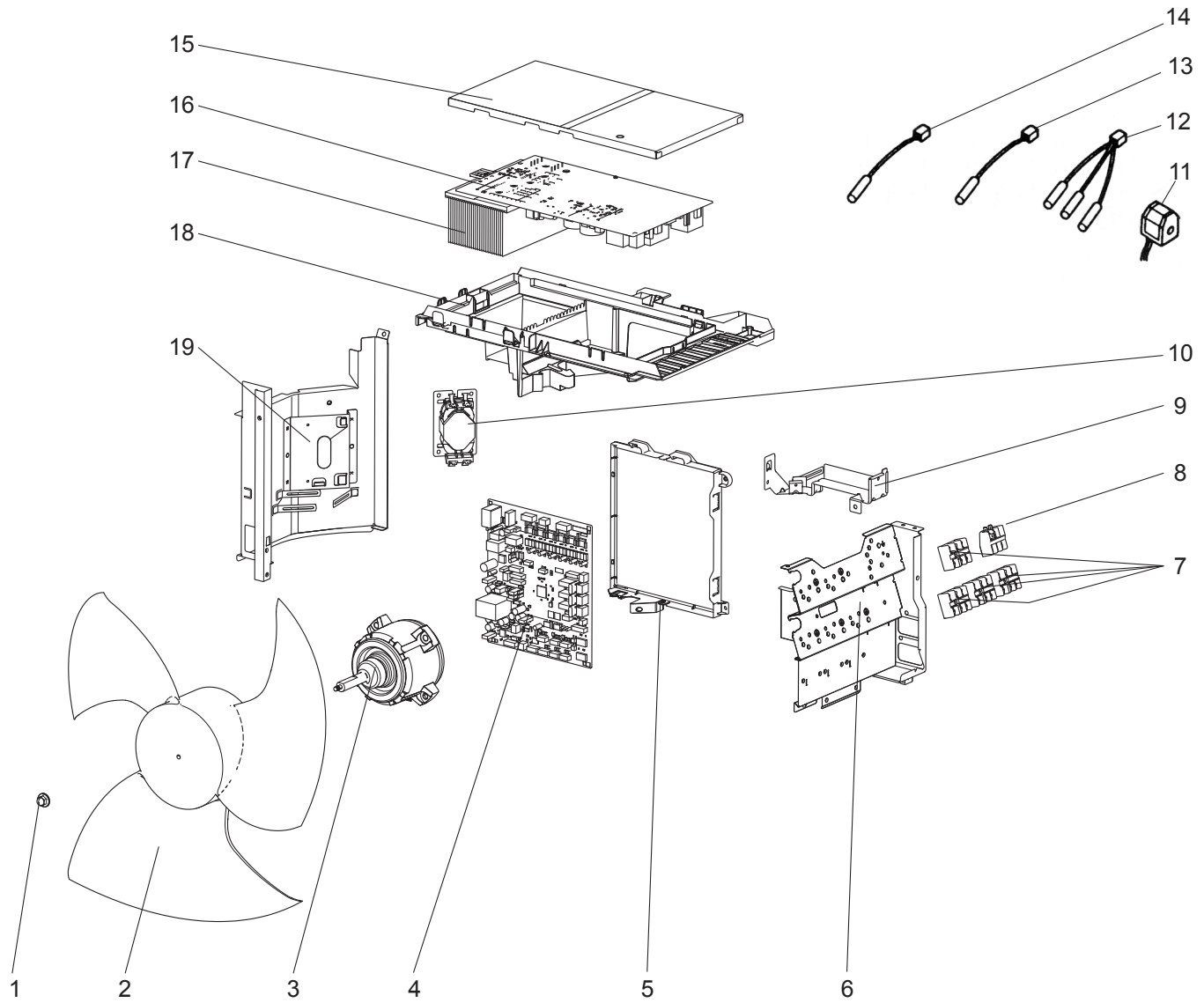
1-9. OUTDOOR UNIT STRUCTURAL PARTS AND FUNCTIONAL PARTS

Part number that is circled is not shown in the illustration.

No.	Part No.	Part Name	Symbol in Wiring Diagram	Q'ty/unit						Remarks
				MXZ-4E83VA-						
				E3	E4	ET3	ET4	ER2	ER3	
1	T7W E22 668	FRONT PANEL		1	1	1	1	1	1	
2	R01 E02 631	ICE GUARD		1	1	1	1	1	1	
3	T7W E09 691	WIRE GRILLE		1	1	1	1	1	1	
4	T7W E25 686	BASE ASSEMBLY		1	1	1	1	1	1	
5	T97 434 607	COMPRESSOR	MC	1	1	1	1	1	1	SNB220FAGMC, Includes RUBBER MOUNTS
6	T7W E59 401	EXPANSION VALVE ASSEMBLY		1	1	1	1	1	1	D room, Includes UNION AND CAPILLARY TUBE
	T7W E81 242	LEV COIL	LEV D	1	1	1	1	1	1	D room, Connector: YELLOW
7	T7W E58 401	EXPANSION VALVE ASSEMBLY		1	1	1	1	1	1	C room, Includes UNION AND CAPILLARY TUBE
	T7W E80 242	LEV COIL	LEV C	1	1	1	1	1	1	C room Connector: BLUE
8	T7W E57 401	EXPANSION VALVE ASSEMBLY		1	1	1	1	1	1	B room, Includes UNION AND CAPILLARY TUBE
	T7W E79 242	LEV COIL	LEV B	1	1	1	1	1	1	B room, Connector: RED
9	T7W E56 401	EXPANSION VALVE ASSEMBLY		1	1	1	1	1	1	A room, Includes UNION AND CAPILLARY TUBE
	T7W E78 242	LEV COIL	LEV A	1	1	1	1	1	1	A room, Connector: WHITE
10	T7W A02 655	HANDLE (R FRONT)		1	1	1	1	1	1	
11	T7W E23 667	SERVICE PANEL		1	1	1	1	1	1	
12	T7W A04 655	HANDLE (R REAR)		1	1	1	1	1	1	
13	T7W E11 682	REAR PANEL		1	1	1	1	1	1	
14	T7W E39 661	BACK PILLAR		1	1	1	1	1	1	
15	T7W E27 440	ACCUMULATOR		1	1	1	1	1	1	
16	T7W H07 410	STOP VALVE ASSEMBLY		1	1	1	1	1	1	Includes both VALVES
17	-	UNION BED		1	1	1	1	1	1	DWG. No. WQ02A059G14
18	T7W H01 208	HIGH PRESSURE SWITCH	HPS	1	1	1	1	1	1	4.41 MPa
19	-	SEPARATOR		1	1	1	1	1	1	DWG. No. WQ00C142G02
20	T7W E06 403	4-WAY VALVE		1	1	1	1	1	1	
21	T7W E06 698	REAR GUARD		1	1	1	1	1	1	
22	T7W E14 641	TOP PANEL		1	1	1	1	1	1	
23	T7W E17 130	MOTOR SUPPORT		1	1	1	1	1	1	
24	T7W H75 408	OUTDOOR HEAT EXCHANGER		1	1	1	1	1	1	Includes CAPILLARY TUBES AND DISTRIBUTOR
25	T7W E11 662	SIDE PANEL (L)		1	1	1	1	1	1	
26	T7W A01 655	HANDLE (REAR)		1	1	1	1	1	1	
27	T7W A02 655	HANDLE (R FRONT)		1	1	1	1	1	1	
28	T7W A01 602	COMPRESSOR FELT (TOP)		1	1	1	1	1	1	
29	R01 A80 602	COMPRESSOR FELT (BODY)		1	1	1	1	1	1	
30	T7W A01 005	BRAND LABEL		1	1	1	1	1	1	
31	T7W A00 508	DAMPER SET		1	1	1	1	1	1	2 PCS SET 95 x 250 T2 (mm)

MXZ-4E83VA - [E3], [E4], [ET3], [ET4], [ER2], [ER3]

1-10. OUTDOOR UNIT FUNCTIONAL PARTS AND ELECTRICAL PARTS



MXZ-4E83VA - E3, E4, ET3, ET4, ER2, ER3

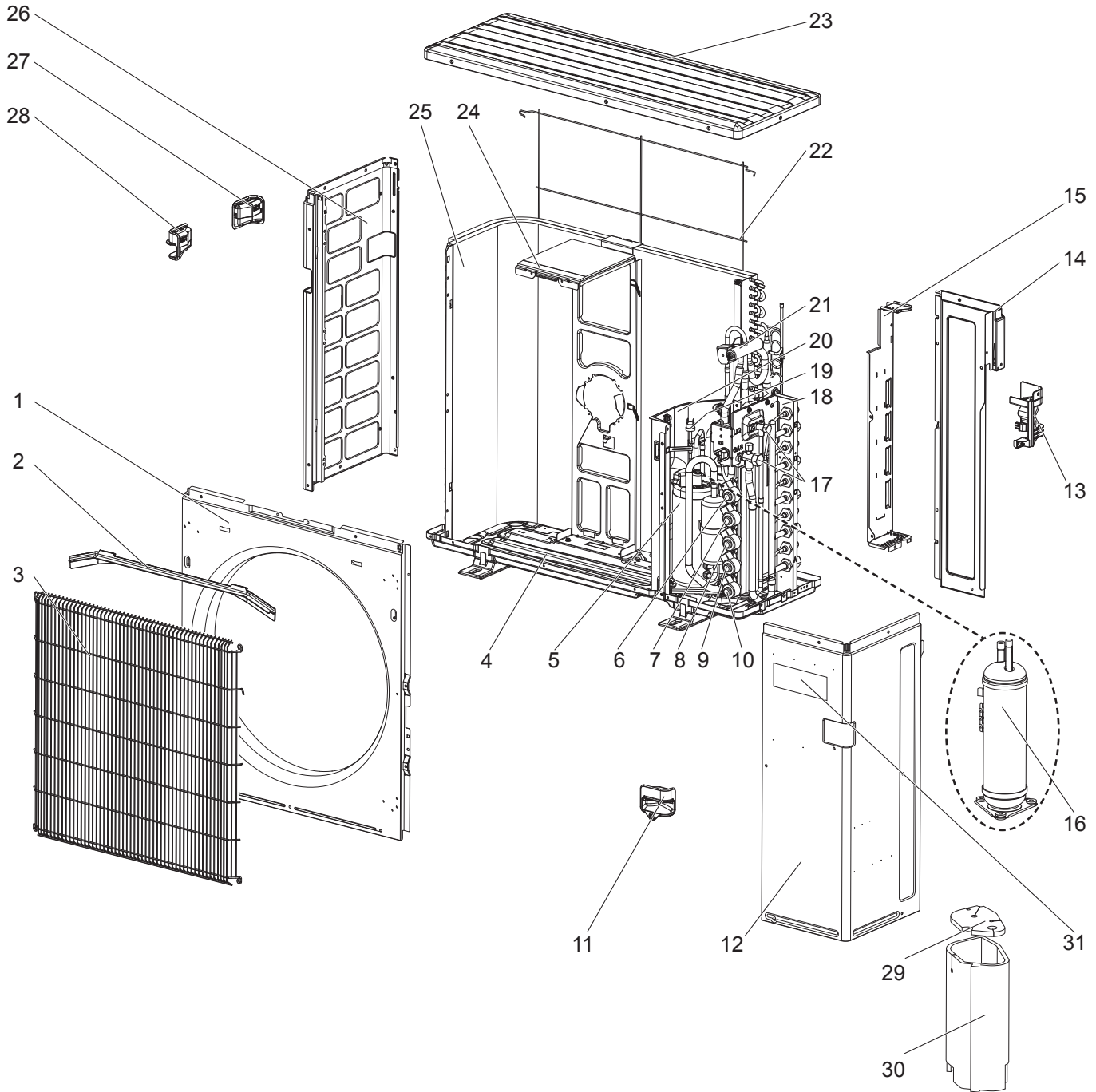
1-10. OUTDOOR UNIT FUNCTIONAL PARTS AND ELECTRICAL PARTS

Part number that is circled is not shown in the illustration.

No.	Part No.	Part Name	Symbol in Wiring Diagram	Q'ty/unit						Remarks
				MXZ-4E83VA-						
				E3	E4	ET3	ET4	ER2	ER3	
1	R01 E09 097	PROPELLER FAN NUT		1	1	1	1	1	1	
2	T7W A00 115	PROPELLER FAN		1	1	1	1	1	1	
3	R01 E81 221	OUTDOOR FAN MOTOR	MF	1	1	1	1	1	1	
4	T7W HE0 315	OUTDOOR CONTROL P.C. BOARD		1		1		1		
4	T7W HX0 315	OUTDOOR CONTROL P.C. BOARD			1		1		1	
5	T7W A02 327	CB HOLDER		1	1	1	1	1	1	
6	-	ELECTRICAL PARTS BOX RIGHT		1	1	1	1	1	1	DWG. No. WM00B522G08
7	T7W E13 716	TERMINAL BLOCK	TB2,3, 4,5	4	4	4	4	4	4	INDOOR UNIT CONNECTING 3P (S1, S2, S3)
8	T7W E65 716	TERMINAL BLOCK	TB1	1	1	1	1	1	1	POWER SUPPLY 3P (L, N, ⊕)
9	-	UNDER FRAME		1	1	1	1	1	1	DWG. No. WM00C604G01
10	T7W E25 259	REACTOR	L	1	1	1	1	1	1	
11	T7W E83 242	R.V. COIL	21S4	1	1	1	1	1	1	
12	T7W E71 202	THERMISTOR	RT61,62,68	1		1		1		DEFROST, DISCHARGE, OUTDOOR HEAT EXCHANGER
12	R01 M19 202	THERMISTOR	RT61,62,68		1		1		1	
13	T7W E72 202	THERMISTOR	RT65	1		1		1		AMBIENT
13	R01 M21 202	THERMISTOR	RT65		1		1		1	
14	R01 E99 202	THERMISTOR	RT64	1		1		1		FIN (HEAT SINK)
14	R01 M20 202	THERMISTOR	RT64		1		1		1	
15	T7W A01 325	PB COVER		1		1		1		
16	T7W AW0 323	OUTDOOR POWER P.C. BOARD		1	1	1	1	1	1	
17	T7W A03 371	HEAT SINK		1	1	1	1	1	1	
18	T7W A00 327	PB HOLDER		1	1	1	1	1	1	
19	-	ELECTRICAL PARTS BOX LEFT		1	1	1	1	1	1	DWG. No. WM00B521G06
⑳	T7W A00 510	COMPRESSOR LEAD ASSEMBLY SET		1	1	1	1	1	1	

MXZ-5E102VA - E1, E2, ET1, ET2, ER1

1-11. OUTDOOR UNIT STRUCTURAL PARTS AND FUNCTIONAL PARTS



MXZ-5E102VA - [E1], [E2], [ET1], [ET2], [ER1]

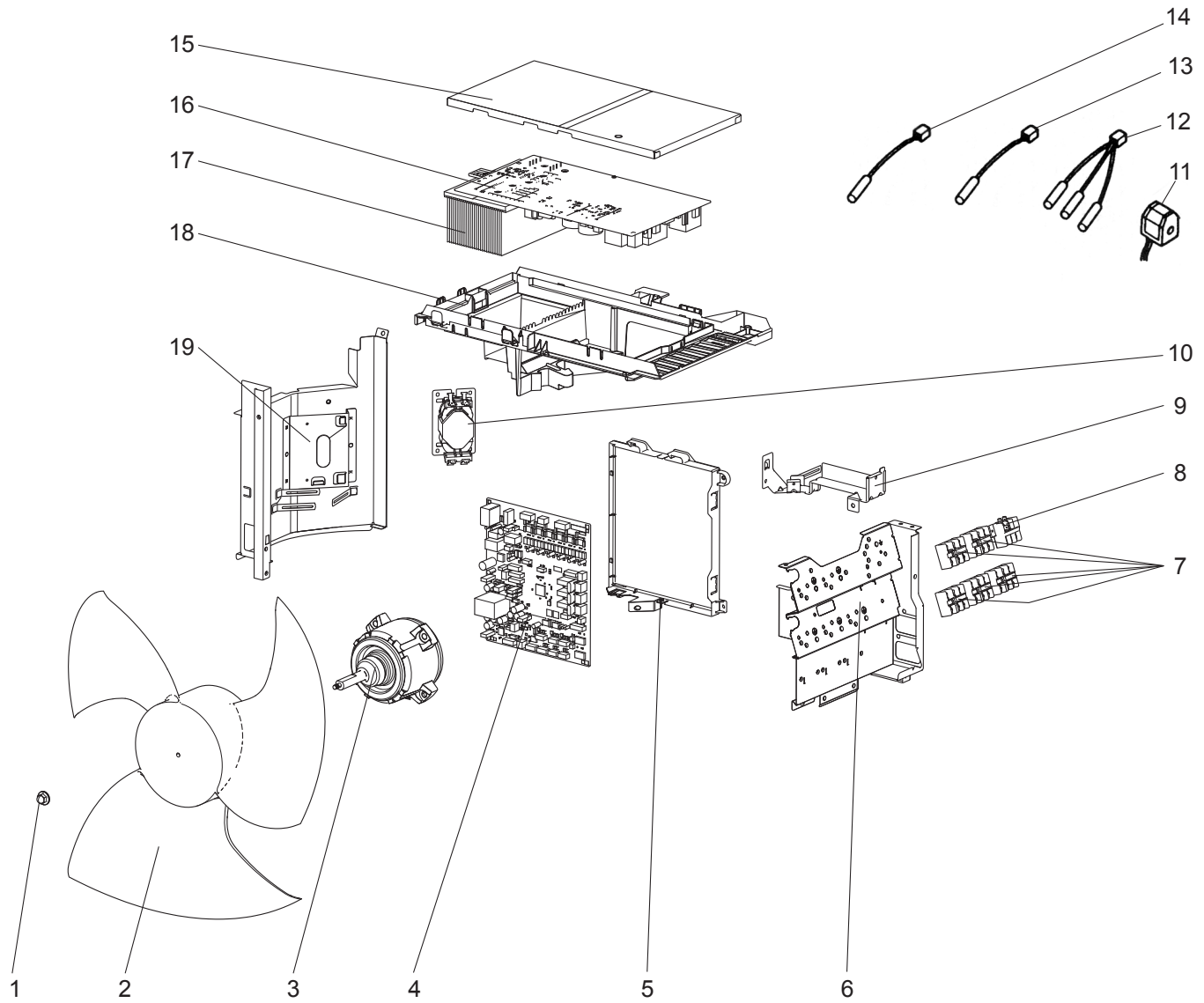
1-11. OUTDOOR UNIT STRUCTURAL PARTS AND FUNCTIONAL PARTS

Part number that is circled is not shown in the illustration.

No.	Part No.	Part Name	Symbol in Wiring Diagram	Q'ty/unit					Remarks
				MXZ-5E102VA-					
				[E1]	[E2]	[ET1]	[ET2]	[ER1]	
1	T7W E22 668	FRONT PANEL		1	1	1	1	1	
2	R01 E02 631	ICE GUARD		1	1	1	1	1	
3	T7W E09 691	WIRE GRILLE		1	1	1	1	1	
4	T7W E24 686	BASE ASSEMBLY		1		1		1	
4	T7W E25 686	BASE ASSEMBLY			1		1		
5	T97 420 607	COMPRESSOR	MC	1	1	1	1	1	SNB220FAGMC, Includes RUBBER MOUNTS
6	T7W E60 401	EXPANSION VALVE ASSEMBLY		1	1	1	1	1	E room, Includes UNION AND CAPILLARY TUBE
	T7W E82 242	LEV COIL	LEV E	1	1	1	1	1	E room, Connector: BLACK
7	T7W E59 401	EXPANSION VALVE ASSEMBLY		1	1	1	1	1	D room, Includes UNION AND CAPILLARY TUBE
	T7W E81 242	LEV COIL	LEV D	1	1	1	1	1	D room, Connector: YELLOW
8	T7W E58 401	EXPANSION VALVE ASSEMBLY		1	1	1	1	1	C room, Includes UNION AND CAPILLARY TUBE
	T7W E80 242	LEV COIL	LEV C	1	1	1	1	1	C room Connector: BLUE
9	T7W E57 401	EXPANSION VALVE ASSEMBLY		1	1	1	1	1	B room, Includes UNION AND CAPILLARY TUBE
	T7W E79 242	LEV COIL	LEV B	1	1	1	1	1	B room, Connector: RED
10	T7W E56 401	EXPANSION VALVE ASSEMBLY		1	1	1	1	1	A room, Includes UNION AND CAPILLARY TUBE
	T7W E78 242	LEV COIL	LEV A	1	1	1	1	1	A room, Connector: WHITE
11	T7W A02 655	HANDLE (R FRONT)		1	1	1	1	1	
12	T7W E23 667	SERVICE PANEL		1	1	1	1	1	
13	T7W A04 655	HANDLE (R REAR)		1	1	1	1	1	
14	T7W E11 682	REAR PANEL		1	1	1	1	1	
15	T7W E39 661	BACK PILLAR		1	1	1	1	1	
16	T7W E27 440	ACCUMULATOR		1	1	1	1	1	
17	T7W E07 410	STOP VALVE ASSEMBLY		1	1	1	1	1	Includes both VALVES
18	-	UNION BED		1	1	1	1	1	DWG. No. WQ02A059G12
19	T7W E01 208	HIGH PRESSURE SWITCH	HPS	1	1	1	1	1	4.41 MPa
20	-	SEPARATOR		1	1	1	1	1	DWG. No. WQ00C142G02
21	T7W E06 403	4-WAY VALVE		1	1	1	1	1	
22	T7W E06 698	REAR GUARD		1	1	1	1	1	
23	T7W E14 641	TOP PANEL		1	1	1	1	1	
24	T7W E17 130	MOTOR SUPPORT		1	1	1	1	1	
25	T7W E75 408	OUTDOOR HEAT EXCHANGER		1	1	1	1	1	Includes CAPILLARY TUBES AND DISTRIBUTOR
26	T7W E11 662	SIDE PANEL (L)		1	1	1	1	1	
27	T7W A01 655	HANDLE (REAR)		1	1	1	1	1	
28	T7W A00 655	HANDLE (FRONT)		1	1	1	1	1	
29	T7W A01 602	COMPRESSOR FELT (TOP)		1	1	1	1	1	
30	T7W A00 602	COMPRESSOR FELT (BODY)		1	1	1	1	1	
31	T7W A01 005	BRAND LABEL		1	1	1	1	1	
(32)	T7W A01 508	DAMPER SET		1	1	1	1	1	2 PCS SET 95 x 320 T2 (mm)

MXZ-5E102VA - E1, E2, ET1, ET2, ER1

1-12. OUTDOOR UNIT FUNCTIONAL PARTS AND ELECTRICAL PARTS



MXZ-5E102VA - [E1], [E2], [ET1], [ET2], [ER1]

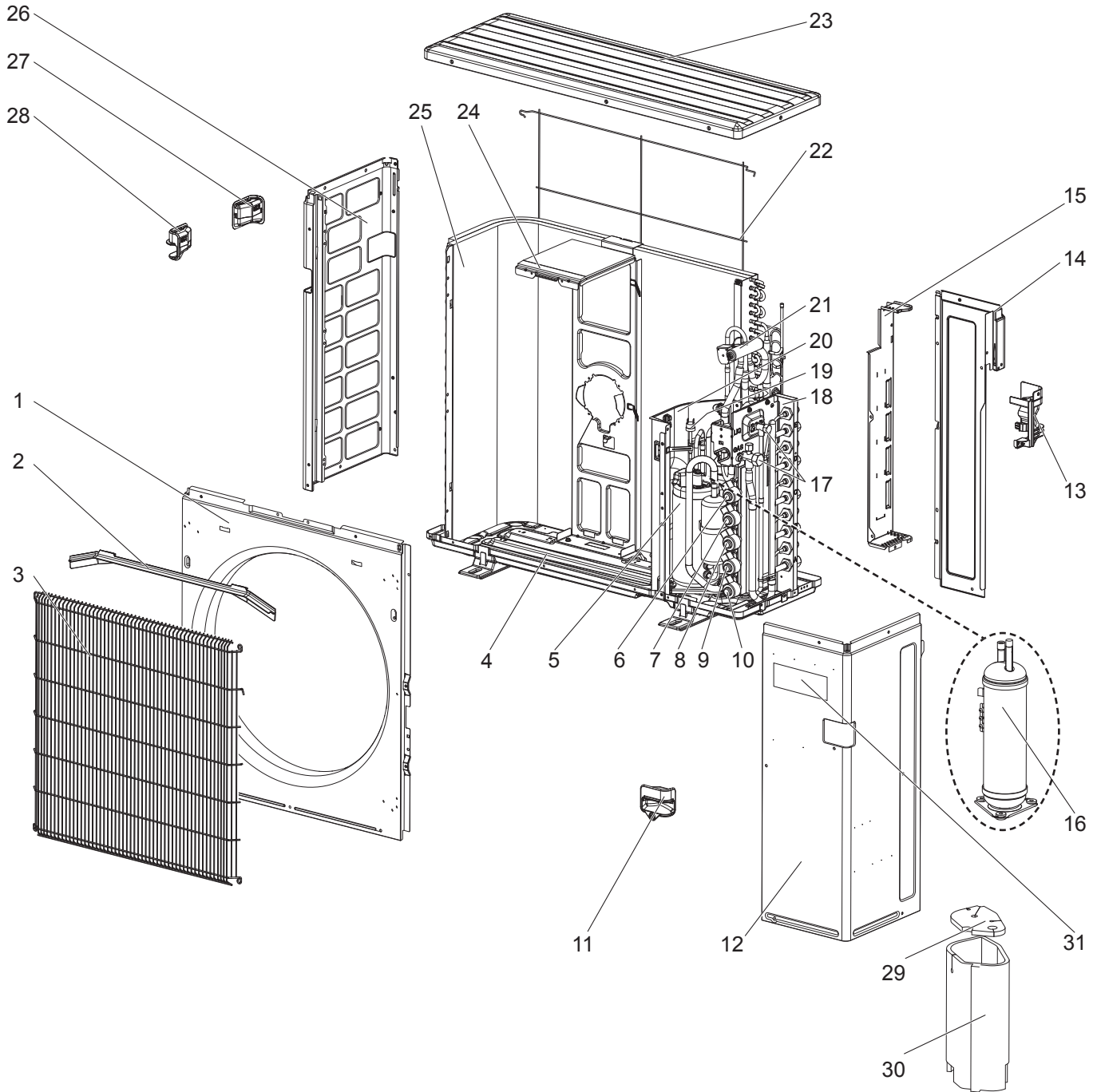
1-12. OUTDOOR UNIT FUNCTIONAL PARTS AND ELECTRICAL PARTS

Part number that is circled is not shown in the illustration.

No.	Part No.	Part Name	Symbol in Wiring Diagram	Q'ty/unit					Remarks
				MXZ-5E102VA-					
				[E1]	[E2]	[ET1]	[ET2]	[ER1]	
1	R01 E09 097	PROPELLER FAN NUT		1	1	1	1	1	
2	T7W A00 115	PROPELLER FAN		1	1	1	1	1	
3	T7W A02 221	OUTDOOR FAN MOTOR	MF	1		1			
3	T7W A09 221	OUTDOOR FAN MOTOR	MF		1		1	1	
4	T7W GR0 315	OUTDOOR CONTROL P.C. BOARD		1		1			
4	T7W H20 315	OUTDOOR CONTROL P.C. BOARD			1		1	1	
5	T7W A02 327	CB HOLDER		1	1	1	1	1	
6	-	ELECTRICAL PARTS BOX RIGHT		1	1	1	1	1	DWG. No. WM00B522G08
7	T7W E13 716	TERMINAL BLOCK	TB2,3,4,5,(6)	5	5	5	5	5	INDOOR UNIT CONNECTING 3P (S1, S2, S3)
8	T7W E65 716	TERMINAL BLOCK	TB1	1	1	1	1	1	POWER SUPPLY 3P (L, N, ⊕)
9	-	UNDER FRAME		1	1	1	1	1	DWG. No. WM00C604G01
10	T7W E25 259	REACTOR	L	1	1	1	1	1	
11	T7W E83 242	R.V. COIL	21S4	1	1	1	1	1	
12	T7W E71 202	THERMISTOR	RT61,62,68	1	1	1	1	1	DEFROST, DISCHARGE, OUTDOOR HEAT EXCHANGER
13	T7W E72 202	THERMISTOR	RT65	1	1	1	1	1	AMBIENT
14	R01 E99 202	THERMISTOR	RT64	1	1	1	1	1	FIN (HEAT SINK)
15	T7W A00 325	PB COVER		1	1	1	1	1	
16	T7W AW0 323	OUTDOOR POWER P.C. BOARD		1	1	1	1	1	
17	T7W A03 371	HEAT SINK		1	1	1	1	1	
18	T7W A00 327	PB HOLDER		1	1	1	1	1	
19	-	ELECTRICAL PARTS BOX LEFT		1	1	1	1	1	DWG. No. WM00B521G06
(20)	T7W A00 510	COMPRESSOR LEAD ASSEMBLY SET		1	1	1	1	1	

MXZ-5E102VA - E3, E4, ET3, ET4, ER2, ER3

1-13. OUTDOOR UNIT STRUCTURAL PARTS AND FUNCTIONAL PARTS



MXZ-5E102VA - [E3], [E4], [ET3], [ET4], [ER2], [ER3]

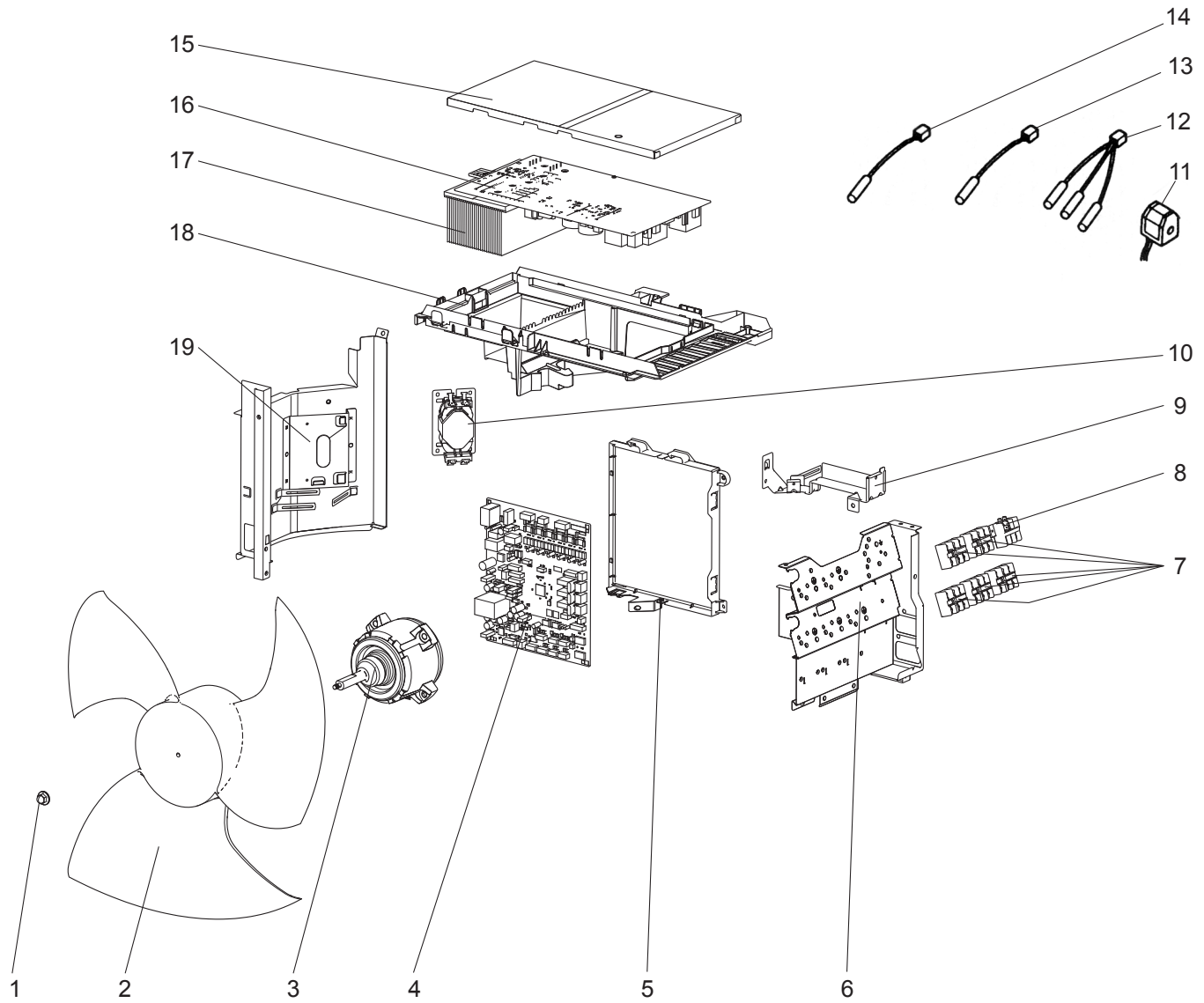
1-13. OUTDOOR UNIT STRUCTURAL PARTS AND FUNCTIONAL PARTS

Part number that is circled is not shown in the illustration.

No.	Part No.	Part Name	Symbol in Wiring Diagram	Q'ty/unit						Remarks
				MXZ-5E102VA-						
				[E3]	[E4]	[ET3]	[ET4]	[ER2]	[ER3]	
1	T7W E22 668	FRONT PANEL		1	1	1	1	1	1	
2	R01 E02 631	ICE GUARD		1	1	1	1	1	1	
3	T7W E09 691	WIRE GRILLE		1	1	1	1	1	1	
4	T7W E25 686	BASE ASSEMBLY		1	1	1	1	1	1	
5	T97 434 607	COMPRESSOR	MC	1	1	1	1	1	1	SNB220FAGMC, Includes RUBBER MOUNTS
6	T7W E60 401	EXPANSION VALVE ASSEMBLY		1	1	1	1	1	1	E room, Includes UNION AND CAPILLARY TUBE
	T7W E82 242	LEV COIL	LEV E	1	1	1	1	1	1	E room, Connector: BLACK
7	T7W E59 401	EXPANSION VALVE ASSEMBLY		1	1	1	1	1	1	D room, Includes UNION AND CAPILLARY TUBE
	T7W E81 242	LEV COIL	LEV D	1	1	1	1	1	1	D room, Connector: YELLOW
8	T7W E58 401	EXPANSION VALVE ASSEMBLY		1	1	1	1	1	1	C room, Includes UNION AND CAPILLARY TUBE
	T7W E80 242	LEV COIL	LEV C	1	1	1	1	1	1	C room Connector: BLUE
9	T7W E57 401	EXPANSION VALVE ASSEMBLY		1	1	1	1	1	1	B room, Includes UNION AND CAPILLARY TUBE
	T7W E79 242	LEV COIL	LEV B	1	1	1	1	1	1	B room, Connector: RED
10	T7W E56 401	EXPANSION VALVE ASSEMBLY		1	1	1	1	1	1	A room, Includes UNION AND CAPILLARY TUBE
	T7W E78 242	LEV COIL	LEV A	1	1	1	1	1	1	A room, Connector: WHITE
11	T7W A02 655	HANDLE (R FRONT)		1	1	1	1	1	1	
12	T7W E23 667	SERVICE PANEL		1	1	1	1	1	1	
13	T7W A04 655	HANDLE (R REAR)		1	1	1	1	1	1	
14	T7W E11 682	REAR PANEL		1	1	1	1	1	1	
15	T7W E39 661	BACK PILLAR		1	1	1	1	1	1	
16	T7W E27 440	ACCUMULATOR		1	1	1	1	1	1	
17	T7W H07 410	STOP VALVE ASSEMBLY		1	1	1	1	1	1	Includes both VALVES
18	-	UNION BED		1	1	1	1	1	1	DWG. No. WQ02A059G12
19	T7W H01 208	HIGH PRESSURE SWITCH	HPS	1	1	1	1	1	1	4.41 MPa
20	-	SEPARATOR		1	1	1	1	1	1	DWG. No. WQ00C142G02
21	T7W E06 403	4-WAY VALVE		1	1	1	1	1	1	
22	T7W E06 698	REAR GUARD		1	1	1	1	1	1	
23	T7W E14 641	TOP PANEL		1	1	1	1	1	1	
24	T7W E17 130	MOTOR SUPPORT		1	1	1	1	1	1	
25	T7W H75 408	OUTDOOR HEAT EXCHANGER		1	1	1	1	1	1	Includes CAPILLARY TUBES AND DISTRIBUTOR
26	T7W E11 662	SIDE PANEL (L)		1	1	1	1	1	1	
27	T7W A01 655	HANDLE (REAR)		1	1	1	1	1	1	
28	T7W A02 655	HANDLE (R FRONT)		1	1	1	1	1	1	
29	T7W A01 602	COMPRESSOR FELT (TOP)		1	1	1	1	1	1	
30	R01 A80 602	COMPRESSOR FELT (BODY)		1	1	1	1	1	1	
31	T7W A01 005	BRAND LABEL		1	1	1	1	1	1	
32	T7W A01 508	DAMPER SET		1	1	1	1	1	1	2 PCS SET 95 x 320 T2 (mm)

MXZ-5E102VA - E3, E4, ET3, ET4, ER2, ER3

1-14. OUTDOOR UNIT FUNCTIONAL PARTS AND ELECTRICAL PARTS



MXZ-5E102VA - [E3], [E4], [ET3], [ET4], [ER2], [ER3]

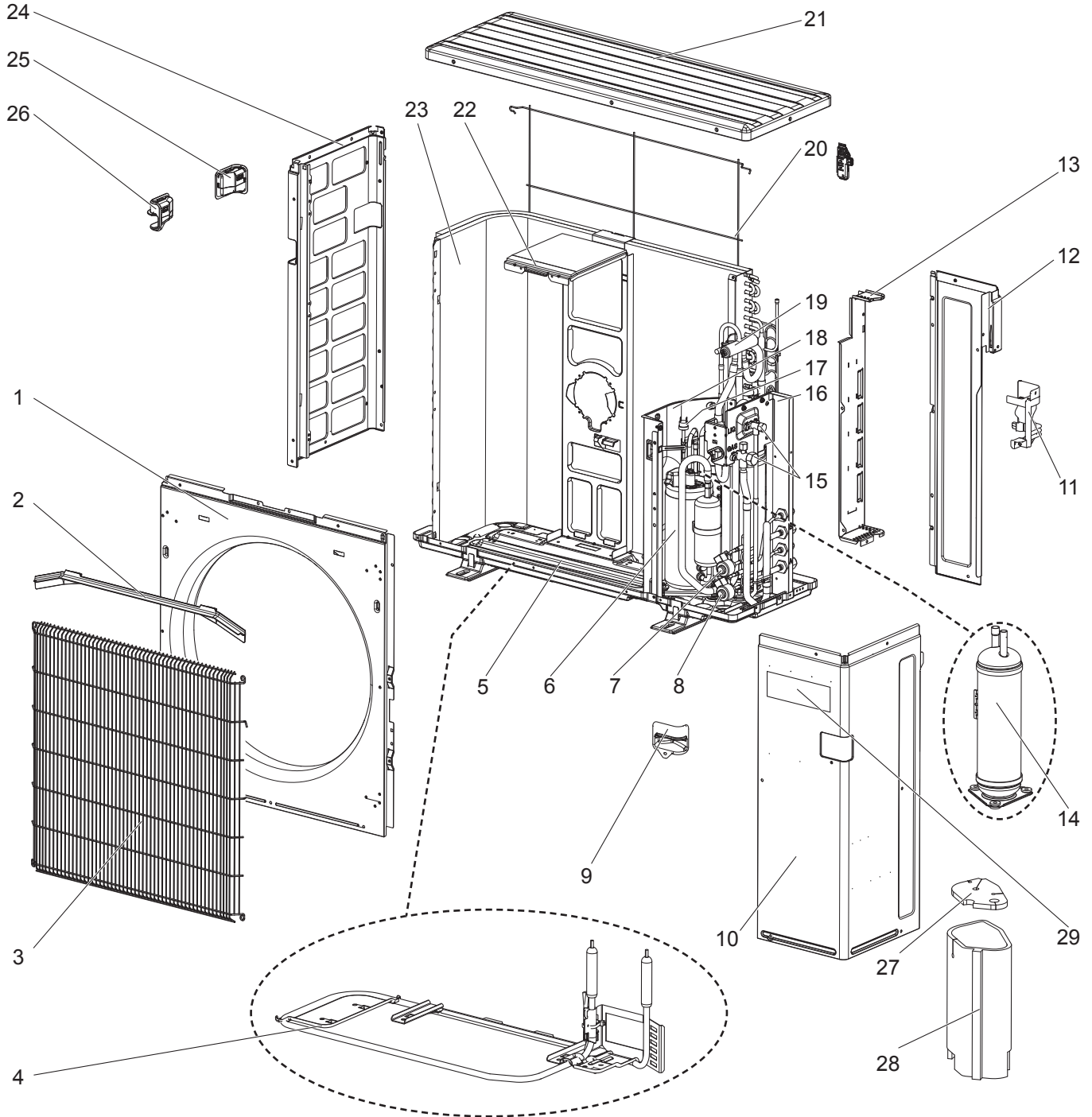
1-14. OUTDOOR UNIT FUNCTIONAL PARTS AND ELECTRICAL PARTS

Part number that is circled is not shown in the illustration.

No.	Part No.	Part Name	Symbol in Wiring Diagram	Q'ty/unit						Remarks
				MXZ-5E102VA-						
				E3	E4	ET3	ET4	ER2	ER3	
1	R01 E09 097	PROPELLER FAN NUT		1	1	1	1	1	1	
2	T7W A00 115	PROPELLER FAN		1	1	1	1	1	1	
3	R01 E81 221	OUTDOOR FAN MOTOR	MF	1	1	1	1	1	1	
4	T7W HF0 315	OUTDOOR CONTROL P.C. BOARD		1		1		1		
4	T7W HY0 315	OUTDOOR CONTROL P.C. BOARD			1		1		1	
5	T7W A02 327	CB HOLDER		1	1	1	1	1	1	
6	-	ELECTRICAL PARTS BOX RIGHT		1	1	1	1	1	1	DWG. No. WM00B522G08
7	T7W E13 716	TERMINAL BLOCK	TB2,3,4,5,6	5	5	5	5	5	5	INDOOR UNIT CONNECTING 3P (S1, S2, S3)
8	T7W E65 716	TERMINAL BLOCK	TB1	1	1	1	1	1	1	POWER SUPPLY 3P (L, N, ⊕)
9	-	UNDER FRAME		1	1	1	1	1	1	DWG. No. WM00C604G01
10	T7W E25 259	REACTOR	L	1	1	1	1	1	1	
11	T7W E83 242	R.V. COIL	21S4	1	1	1	1	1	1	
12	T7W E71 202	THERMISTOR	RT61,62,68	1		1		1		DEFROST, DISCHARGE, OUTDOOR HEAT EXCHANGER
12	R01 M19 202	THERMISTOR	RT61,62,68		1		1		1	
13	T7W E72 202	THERMISTOR	RT65	1		1		1		AMBIENT
13	R01 M21 202	THERMISTOR	RT65		1		1		1	
14	R01 E99 202	THERMISTOR	RT64	1		1		1		FIN (HEAT SINK)
14	R01 M20 202	THERMISTOR	RT64		1		1		1	
15	T7W A01 325	PB COVER		1	1	1	1	1	1	
16	T7W AW0 323	OUTDOOR POWER P.C. BOARD		1	1	1	1	1	1	
17	T7W A03 371	HEAT SINK		1	1	1	1	1	1	
18	T7W A00 327	PB HOLDER		1	1	1	1	1	1	
19	-	ELECTRICAL PARTS BOX LEFT		1	1	1	1	1	1	DWG. No. WM00B521G06
(20)	T7W A00 510	COMPRESSOR LEAD ASSEMBLY SET		1	1	1	1	1	1	

MXZ-2E53VAHZ - [E1], [E2], [ER1], [ER2]

1-15. OUTDOOR UNIT STRUCTURAL PARTS AND FUNCTIONAL PARTS



MXZ-2E53VAHZ - [E1], [E2], [ER1], [ER2]

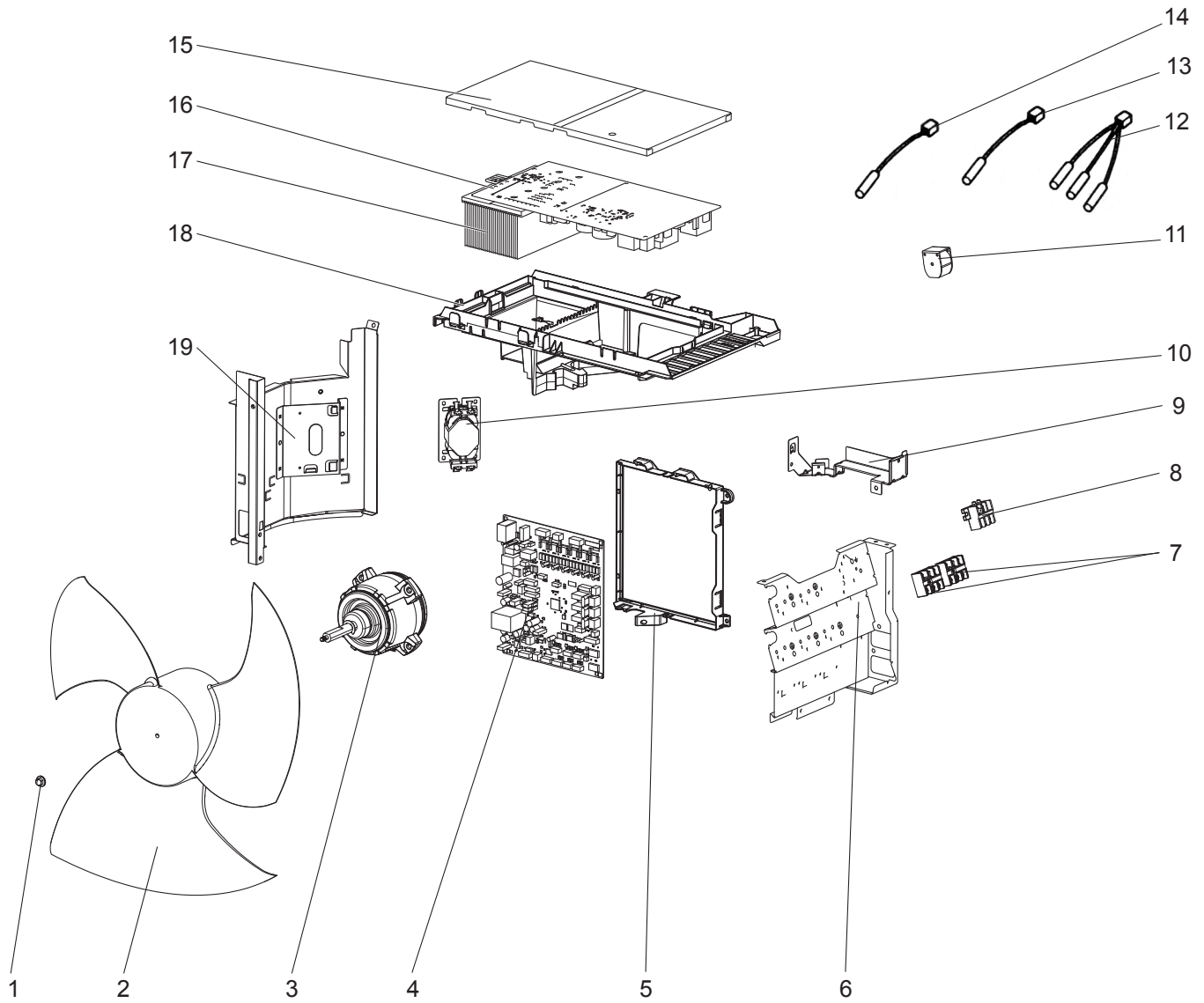
1-15. OUTDOOR UNIT STRUCTURAL PARTS AND FUNCTIONAL PARTS

Part number that is circled is not shown in the illustration.

No.	Part No.	Part Name	Symbol in Wiring Diagram	Q'ty/unit				Remarks
				MXZ-2E53VAHZ-				
				[E1]	[E2]	[ER1]	[ER2]	
1	T7W E22 668	FRONT PANEL		1	1	1	1	
2	R01 E02 631	ICE GUARD		1	1	1	1	
3	T7W E09 691	WIRE GRILLE		1	1	1	1	
4	T7W H01 300	DEFROST HEATER	H	1	1	1	1	Includes HEATER PROTECTOR (26H)
5	T7W E24 686	BASE ASSEMBLY		1		1		
5	T7W E25 686	BASE ASSEMBLY			1		1	
6	T97 434 607	COMPRESSOR	MC	1	1	1	1	SNB220FAGMC, Includes RUBBER MOUNTS
7	T7W E57 401	EXPANSION VALVE ASSEMBLY		1	1	1	1	B room, Includes UNION AND CAPILLARY TUBE
	T7W E79 242	LEV COIL	LEV B	1	1	1	1	B room, Connector: RED
8	T7W E56 401	EXPANSION VALVE ASSEMBLY		1	1	1	1	A room, Includes UNION AND CAPILLARY TUBE
	T7W E78 242	LEV COIL	LEV A	1	1	1	1	A room, Connector: WHITE
9	T7W A02 655	HANDLE (R FRONT)		1	1	1	1	
10	T7W E23 667	SERVICE PANEL		1	1	1	1	
11	T7W A04 655	HANDLE (R REAR)		1	1	1	1	
12	T7W E11 682	REAR PANEL		1	1	1	1	
13	T7W E39 661	BACK PILLAR		1	1	1	1	
14	T7W E27 440	ACCUMULATOR		1	1	1	1	
15	T7W H07 410	STOP VALVE ASSEMBLY		1	1	1	1	Includes both VALVES
16	-	UNION BED		1	1	1	1	DWG. No. WQ02A059G16
17	T7W H01 208	HIGH PRESSURE SWITCH	HPS	1	1	1	1	4.41 MPa
18	-	SEPARATOR		1	1	1	1	DWG. No. WQ00C142G04
19	T7W E06 403	4-WAY VALVE		1	1	1	1	
20	T7W E06 698	REAR GUARD		1	1	1	1	
21	T7W E14 641	TOP PANEL		1	1	1	1	
22	T7W E17 130	MOTOR SUPPORT		1	1	1	1	
23	T7W H75 408	OUTDOOR HEAT EXCHANGER		1	1	1	1	Includes CAPILLARY TUBES AND DISTRIBUTOR
24	T7W E11 662	SIDE PANEL (L)		1	1	1	1	
25	T7W A01 655	HANDLE (REAR)		1	1	1	1	
26	T7W A02 655	HANDLE (FRONT)		1	1	1	1	
27	T7W A01 602	COMPRESSOR FELT (TOP)		1	1	1	1	
28	T7W A00 602	COMPRESSOR FELT (BODY)		1		1		
28	R01 A80 602	COMPRESSOR FELT (BODY)			1		1	
29	T7W A01 005	BRAND LABEL		1	1	1	1	
30	T7W A00 508	DAMPER SET		1	1	1	1	2 PCS SET 95 x 250 T2 (mm)

MXZ-2E53VAHZ - [E1], [E2], [ER1], [ER2]

1-16. OUTDOOR UNIT FUNCTIONAL PARTS AND ELECTRICAL PARTS



MXZ-2E53VAHZ - [E1], [E2], [ER1], [ER2]

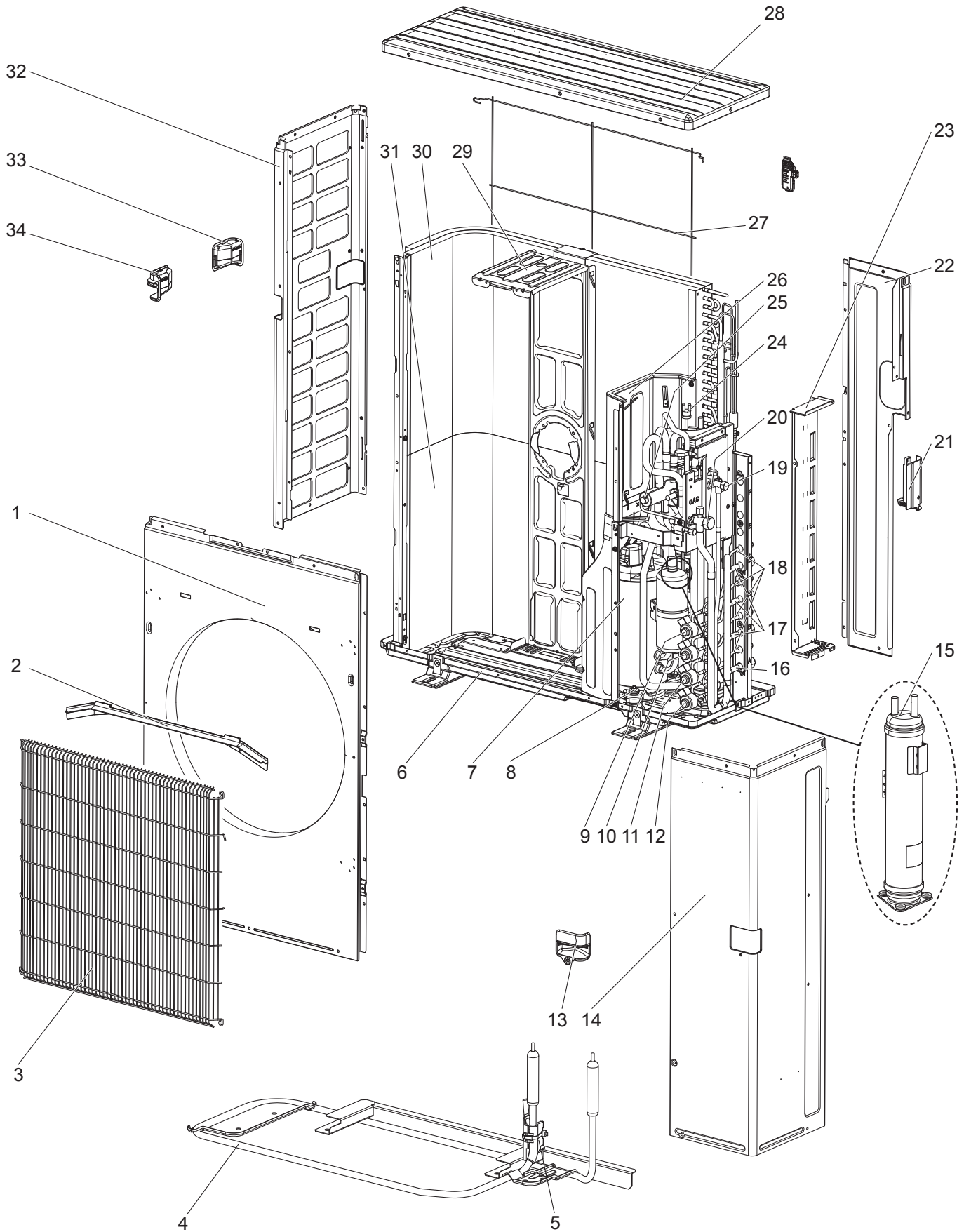
1-16. OUTDOOR UNIT FUNCTIONAL PARTS AND ELECTRICAL PARTS

Part number that is circled is not shown in the illustration.

No.	Part No.	Part Name	Symbol in Wiring Diagram	Q'ty/unit				Remarks
				MXZ-2E53VAHZ-				
				[E1]	[E2]	[ER1]	[ER2]	
1	R01 E09 097	PROPELLER FAN NUT		1	1	1	1	
2	T7W A00 115	PROPELLER FAN		1	1	1	1	
3	R01 E81 221	OUTDOOR FAN MOTOR	MF	1	1	1	1	
4	T7W GT0 315	OUTDOOR CONTROL P.C. BOARD		1		1		
4	T7W HZ0 315	OUTDOOR CONTROL P.C. BOARD			1		1	
5	T7W A02 327	CB HOLDER		1	1	1	1	
6	-	ELECTRICAL PARTS BOX RIGHT		1	1	1	1	DWG. No. WM00B522G08
7	T7W E13 716	TERMINAL BLOCK	TB2,3	2	2	2	2	INDOOR UNIT CONNECTING 3P (S1, S2, S3)
8	T7W E65 716	TERMINAL BLOCK	TB1	1	1	1	1	POWER SUPPLY 3P (L, N, ⊕)
9	-	UNDER FRAME		1	1	1	1	DWG. No. WM00C604G01
10	T7W E25 259	REACTOR	L	1	1	1	1	
11	T7W E83 242	R.V. COIL	21S4	1	1	1	1	
12	T7W E71 202	THERMISTOR	RT61,62,68	1		1		DEFROST, DISCHARGE, OUTDOOR HEAT EXCHANGER
12	R01 M19 202	THERMISTOR	RT61,62,68		1		1	
13	T7W E72 202	THERMISTOR	RT65	1		1		AMBIENT
13	R01 M21 202	THERMISTOR	RT65		1		1	
14	R01 E99 202	THERMISTOR	RT64	1		1		FIN (HEAT SINK)
14	R01 M20 202	THERMISTOR	RT64		1		1	
15	T7W A01 325	PB COVER		1	1	1	1	
16	T7W AW0 323	OUTDOOR POWER P.C. BOARD		1	1	1	1	
17	T7W A03 371	HEAT SINK		1	1	1	1	
18	T7W A00 327	PB HOLDER		1	1	1	1	
19	-	ELECTRICAL PARTS BOX LEFT		1	1	1	1	DWG. No. WM00B521G07
20	T7W A00 510	COMPRESSOR LEAD ASSEMBLY SET		1	1	1	1	

MXZ-4E83VAHZ - [E1], [E2], [E3], [ER1], [ER2], [ER3]

1-17. OUTDOOR UNIT STRUCTURAL PARTS AND FUNCTIONAL PARTS



MXZ-4E83VAHZ - [E1], [E2], [E3], [ER1], [ER2], [ER3]

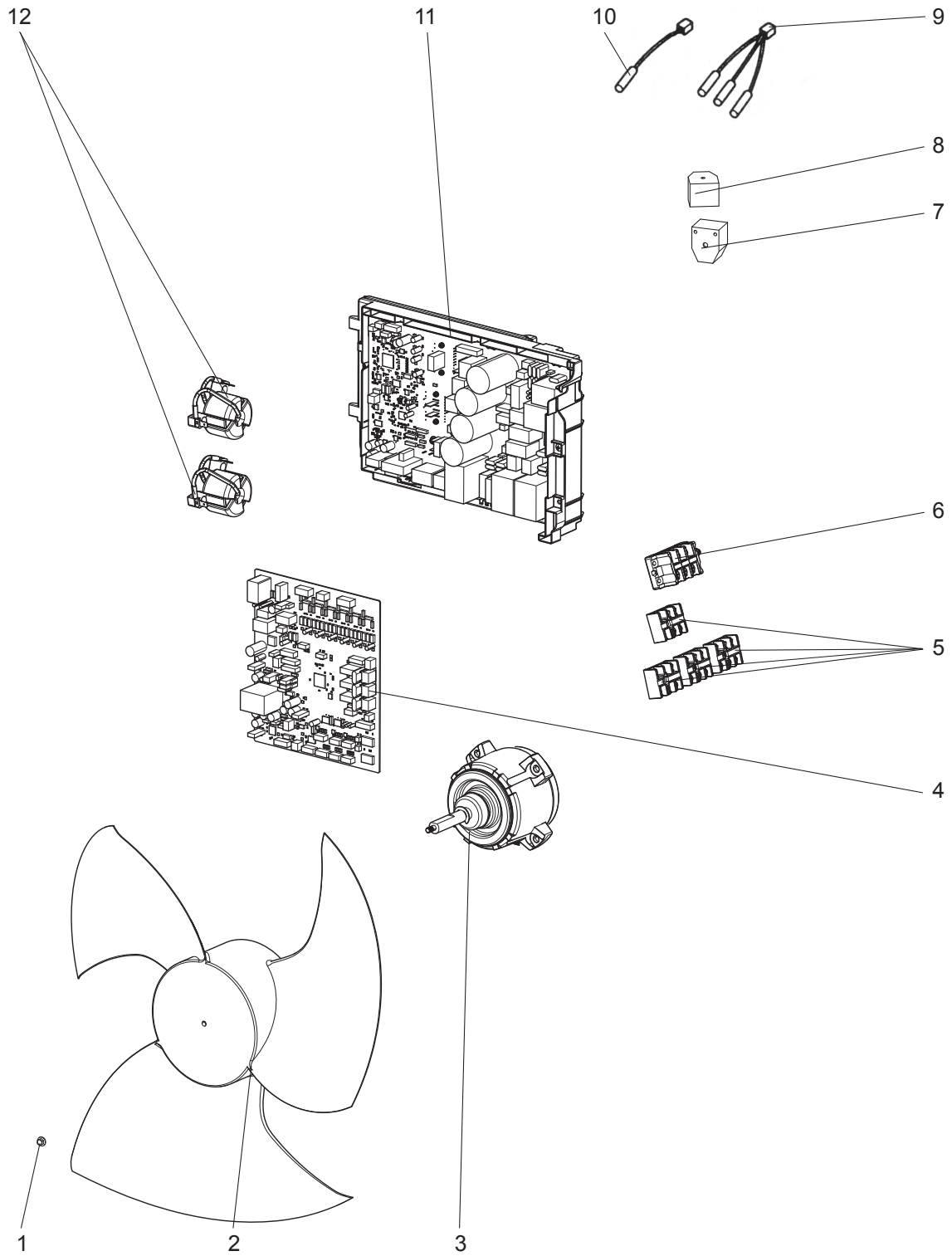
1-17. OUTDOOR UNIT STRUCTURAL PARTS AND FUNCTIONAL PARTS

Part numbers that are circled are not shown in the illustration.

No.	Part No.	Part Name	Symbol In Wiring Diagram	Q'ty/unit						Remarks
				MXZ-4E83VAHZ						
				E1	E2	E3	ER1	ER2	ER3	
1	E22 N99 232	FRONT PANEL		1	1	1	1	1	1	
2	E27 A15 531	ICE GUARD		1	1	1	1	1	1	
3	E22 R55 521	GRILLE		1	1	1	1	1	1	
4	E22 N99 526	DEFROST HEATER	H	1	1	1	1	1	1	
5	E22 N99 381	HEATER PROTECTOR	26H	1	1	1	1	1	1	
6	E22 N99 290	BASE ASSEMBLY		1	1	1	1	1	1	
7	E22 N99 900	COMPRESSOR	MC	1	1	1	1	1	1	MNB33FBTMC-L
8	E22 267 506	COMPRESSOR RUBBER SET		3	3	3	3	3	3	3 RUBBERS SET
9	E22 N99 640	EXPANSION VALVE		1	1	1	1	1	1	D room
9	E22 P63 493	LEV COIL	LEV D	1	1	1	1	1	1	D room
10	E22 N99 640	EXPANSION VALVE		1	1	1	1	1	1	C room
10	E22 P02 493	LEV COIL	LEV C	1	1	1	1	1	1	C room
11	E22 N99 640	EXPANSION VALVE		1	1	1	1	1	1	B room
11	E22 P01 493	LEV COIL	LEV B	1	1	1	1	1	1	B room
12	E22 N99 640	EXPANSION VALVE		1	1	1	1	1	1	A room
12	E22 N99 493	LEV COIL	LEV A	1	1	1	1	1	1	A room
13	E22 P01 009	HANDLE		1	1	1	1	1	1	
14	E22 N99 245	SERVICE PANEL		1	1	1	1	1	1	
15	E22 N99 932	ACCUMULATOR		1	1	1	1	1	1	
16	E22 D37 666	UNION (GAS)		1	1	1	1	1	1	Ø12.7, A room
17	E22 D36 666	UNION (GAS)		3	3	3	3	3	3	Ø9.52, B, C, D room
18	E22 D36 667	UNION (LIQUID)		4	4	4	4	4	4	Ø6.35, A, B, C, D room
19	E22 N99 662	STOP VALVE (LIQUID)		1	1	1	1	1	1	Ø9.52
20	E22 R55 661	STOP VALVE (GAS)		1	1	1	1	1	1	Ø15.88
21	E22 N99 009	HANDLE (BACK)		1	1	1	1	1	1	
22	E22 R55 233	BACK PANEL		1	1	1	1	1	1	
23	E22 R91 814	BACK PILLAR		1	1	1	1	1	1	
24	E22 R24 646	HIGH PRESSURE SWITCH	HPS	1	1	1	1	1	1	4.41 MPa
25	E22 R55 961	4-WAY VALVE		1	1	1	1	1	1	
26	E22 N99 293	SEPARATOR		1	1	1	1	1	1	
27	E22 N99 523	REAR GUARD		1	1	1	1	1	1	
28	E22 N99 297	TOP PANEL		1	1		1	1		
28	E22 18B 297	TOP PANEL				1			1	
29	E22 N99 515	MOTOR SUPPORT		1	1	1	1	1	1	
30	E22 N99 630	OUTDOOR HEAT EXCHANGER (TOP)		1	1	1	1	1	1	
31	E22 P01 630	OUTDOOR HEAT EXCHANGER (UNDER)		1	1	1	1	1	1	
32	E22 N99 086	SIDE PANEL-L		1	1	1	1	1	1	
33	E27 943 009	HANDLE (REAR)		1	1	1	1	1	1	
34	E27 942 009	HANDLE (FRONT)		1	1	1	1	1	1	
35	E22 R55 492	2-WAY SOLENOID VALVE		1	1	1	1	1	1	
36	E22 939 936	CAPILLARY TUBE		4	4	4	4	4	4	Ø4.0 x Ø2.8 x 100
37	E22 938 936	CAPILLARY TUBE		1	1	1	1	1	1	Ø2.5 x Ø0.6 x 1000
38	E22 N99 936	CAPILLARY TUBE		2	2	2	2	2	2	Ø4.0 x Ø3.0 x 200

MXZ-4E83VAHZ - [E1], [E2], [E3], [ER1], [ER2], [ER3]

1-18. OUTDOOR UNIT FUNCTIONAL PARTS AND ELECTRICAL PARTS



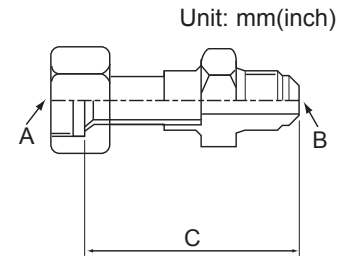
MXZ-4E83VAHZ - [E1], [E2], [E3], [ER1], [ER2], [ER3]

1-18. OUTDOOR UNIT FUNCTIONAL PARTS AND ELECTRICAL PARTS

No.	Part No.	Part Name	Symbol In Wiring Diagram	Q'ty/unit						Remarks
				MXZ-4E83VAHZ						
				E1	E2	E3	ER1	ER2	ER3	
1	E27 A15 508	PROPELLER FAN NUT		1	1	1	1	1	1	
2	E22 N99 501	PROPELLER FAN		1	1	1	1	1	1	
3	E22 R55 301	OUTDOOR FAN MOTOR	MF	1	1		1	1		SIC-81FW-D888-□
3	E22 Y45 301	OUTDOOR FAN MOTOR	MF			1			1	SIC-88FWJ-D888-□
4	E22 R91 450	OUTDOOR CONTROL P.C. BOARD		1			1			
4	E22 90A 450	OUTDOOR CONTROL P.C. BOARD			1			1		
4	E22 55D 450	OUTDOOR CONTROL P.C. BOARD				1			1	
5	E22 C92 375	TERMINAL BLOCK	TB2,3, 4,5	4	4	4	4	4	4	Indoor unit connecting
6	E22 R55 374	TERMINAL BLOCK	TB1	1	1	1	1	1	1	Power supply
7	E22 R55 490	R.V. COIL	21S4	1	1	1	1	1	1	
8	E22 R56 490	2-WAY VALVE SOLENOID COIL	21S2	1	1	1	1	1	1	
9	E22 N99 308	THERMISTOR SET	RT61, 62,68	1			1			DEFROST, DISCHARGE, OUTDOOR HEAT EXCHANGER
9	E22 Y45 308	THERMISTOR SET	RT61, 62,68		1	1		1	1	
10	E22 N99 309	AMBIENT TEMPERATURE THERMISTOR	RT65	1			1			
10	E22 Y45 309	AMBIENT TEMPERATURE THERMISTOR	RT65		1	1		1	1	
11	E22 R55 440	OUTDOOR POWER P.C. BOARD		1	1	1	1	1	1	Includes heat sink and RT64
12	E22 N99 337	REACTOR	L1,L2	2	2	2	2	2	2	30A 750μH

2-1. DIFFERENT-DIAMETER PIPE

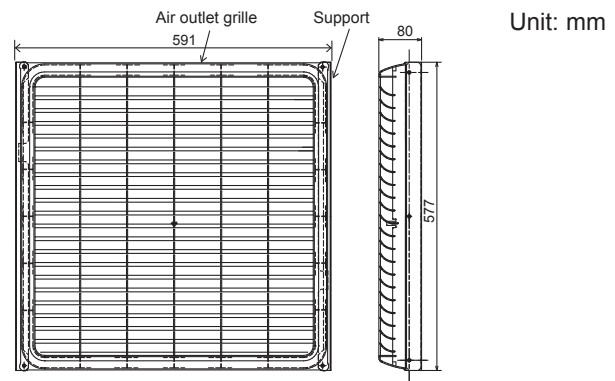
Model name	Connected pipes diameter	Diameter A	Diameter B	Length C	
For different diameter pipes	MAC-A454JP-E	$\phi 9.52$ — $\phi 12.7$ (3/8) (1/2)	$\phi 9.52$ (3/8)	$\phi 12.7$ (1/2)	69
	MAC-A455JP-E	$\phi 12.7$ — $\phi 9.52$ (1/2) (3/8)	$\phi 12.7$ (1/2)	$\phi 9.52$ (3/8)	65
	MAC-A456JP-E	$\phi 12.7$ — $\phi 15.88$ (1/2) (5/8)	$\phi 12.7$ (1/2)	$\phi 15.88$ (5/8)	66.5
	PAC-493PI	$\phi 6.35$ — $\phi 9.52$ (1/4) (3/8)	$\phi 6.35$ (1/4)	$\phi 9.52$ (3/8)	60.5
	PAC-SG76RJ-E	$\phi 9.52$ — $\phi 15.88$ (3/8) (5/8)	$\phi 9.52$ (3/8)	$\phi 15.88$ (5/8)	101.5



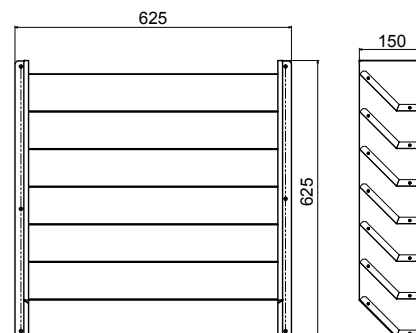
2-2. OUTLET GUIDE

Changes air discharge direction.

Applied unit	Model name	Model code
MXZ-3E54VA MXZ-3E68VA MXZ-4E72VA	MAC-856SG	51H-856
MXZ-4E83VA MXZ-5E102VA MXZ-2E53VAHZ MXZ-4E83VAHZ	PAC-SH96SG-E	7H2N19



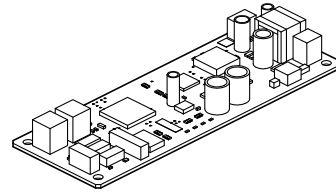
MAC-856SG



PAC-SH96SG-E

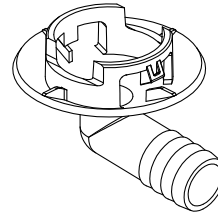
2-3. M-NET ADAPTER

Applied unit	Model name	Model code
MXZ-4E83VA MXZ-5E102VA MXZ-2E53VAHZ MXZ-4E83VAHZ	PAC-IF01MNT-E	7H2N34



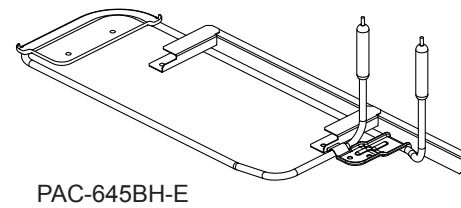
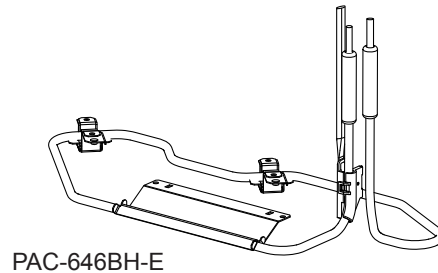
2-4. DRAIN SOCKET

Applied unit	Model name	Model code
MXZ-4E83VA MXZ-5E102VA	PAC-SG60DS-E	7H2N24



2-5. BASE HEATER

Applied unit	Model name	Model code
MXZ-3E54VA- [E2], [ET2], [ER2] MXZ-3E68VA- [E2], [ET2], [ER2] MXZ-4E72VA- [E2], [ET2], [ER2]	PAC-646BH-E	75C61J
MXZ-4E83VA MXZ-5E102VA	PAC-645BH-E	7H2590



Components

①	Base heater	1	④	Base heater support (2)	1	⑦	Cable tie	2
②	Heater guard	1	⑤	Clamp	1	⑧	Fastener	2
③	Base heater support (1)	1	⑥	Screw	8	⑨	Spec label	1

mitsubishi electric corporation

HEAD OFFICE: TOKYO BUILDING, 2-7-3, MARUNOUCHI, CHIYODA-KU, TOKYO 100-8310, JAPAN

© Copyright 2015 MITSUBISHI ELECTRIC CORPORATION

Issued: Sep. 2019. No. OBB723 REVISED EDITION-G

Issued: Feb. 2018. No. OBB723 REVISED EDITION-F

Issued: Jan. 2018. No. OBB723 REVISED EDITION-E

Issued: Feb. 2017. No. OBB723 REVISED EDITION-D

Issued: Feb. 2016. No. OBB723 REVISED EDITION-C

Issued: Nov. 2015. No. OBB723 REVISED EDITION-B

Issued: Sep. 2015. No. OBB723 REVISED EDITION-A

Published: Apr. 2015. No. OBB723

Made in Japan

Specifications are subject to change without notice.