

**Revision R:**

• MXZ-2D33VA- ER4 and  
MXZ-2D42/53VA2- ER4 have been added.

OBB626 REVISED EDITION-Q is void.

# OUTDOOR UNIT

**No. OBB626**  
REVISED EDITION-R

# PARTS CATALOG

## Models

**MXZ-2D33VA** - E1, E2, E3, E4, ER2, ER3, ER4, ET2, ET3, ET4

**MXZ-2D40VA** - E1, ER2

**MXZ-2D42VA** - E2, E3, ER3, ET2, ET3

**MXZ-2D42VA2** - E3, E4, ER3, ER4, ET3, ET4

**MXZ-2D53VA** - E1, E2, E3, ER2, ER3, ET2, ET3

**MXZ-2D53VA2** - E3, E4, ER3, ER4, ET3, ET4

**MXZ-2D53VAH** - E1, E2, E3, ER2, ER3

**MXZ-2D53VAH2** - E3,

**MXZ-3D54VA** - E1

**MXZ-3D54VA2** - E2, E3, ER2, ER3, ET2, ET3

**MXZ-3D68VA** - E1, E2, E3, ER2, ER3, ET2, ET3

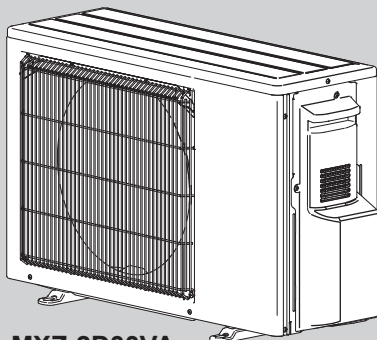
**MXZ-4D72VA** - E1, E2, E3, ER2, ER3, ET2, ET3

**MXZ-4D83VA** - E1, E2, ER1, ER2, ET2

**MXZ-5D102VA** - E1, E2, ER1, ER2, ET2

**MXZ-6D122VA** - E1, E2, ER1, ER2, ET1, ET2

**MXZ-6D122VA2** - E1, ET1, ER1



MXZ-2D33VA  
MXZ-2D40VA  
MXZ-2D42VA  
MXZ-2D42VA2  
MXZ-2D53VA    MXZ-2D53VAH  
MXZ-2D53VA2    MXZ-2D53VAH2

## CONTENTS

1. RoHS PARTS LIST ..... 3
2. OPTIONAL PARTS ..... 30

## SERVICE MANUAL (OBH626)

**NOTE:**

RoHS compliant products have <G> mark on the spec name plate.

**Revision A:**

• MXZ-3D54VA- [E1], MXZ-3D68VA- [E1], MXZ-4D72VA- [E1], MXZ-4D83VA- [E1] and MXZ-5D102VA- [E1] have been added.

**Revision B:**

• Outdoor control P.C. boards for MXZ-3D54VA- [E1], MXZ-3D68VA- [E1], and MXZ-4D72VA- [E1] have been changed.

**Revision C:**

• MXZ-4D83VA- [ER1] and MXZ-5D102VA- [ER1] have been added.

**Revision D:**

• MXZ-2D40VA- [ER2], MXZ-2D42VA- [E2], MXZ-2D53VAH- [E2], [ER2], MXZ-3D54VA2- [E2], [ER2] and MXZ-2D33/2D53/3D68/4D72/4D83/5D102VA- [E2], [ER2] have been added.

**Revision E:**

• MXZ-2D33/2D42/2D53/3D68/4D72/4D83/5D102VA- [ET2] and MXZ-3D54VA2- [ET2] have been added.

**Revision F:**

• MXZ-2D33/2D42/2D53VA- [E3], [ER3], [ET3], MXZ-2D53VAH- [E3], [ER3], MXZ-3D54VA2- [E3], [ER3], [ET3] and MXZ-3D68/4D72VA- [E3], [ER3], [ET3] have been added.

**Revision G:**

• MXZ-6D122VA- [E1], [ER1], [ET1] have been added.

**Revision H:**

• MXZ-2D42/2D53VA2- [E3], [ET3] and MXZ-2D53VAH2- [E3] have been added.

**Revision J:**

• MXZ-2D42/2D53VA2- [ER3] have been added.

**Revision K:**

• Part Numbers of INVERTER P.C. BOARD have been changed.

**Revision L:**

• MXZ-6D122VA- [E2], [ER2], [ET2] have been added.

**Revision M:**

• MXZ-6D122VA2- [E1], [ET1] have been added.

**Revision N:**

• MXZ-6D122VA2- [ER1] has been added.

**Revision P:**

• MXZ-6D122VA2- [E1], [ET1], [ER1] have been added.

**Revision Q:**

• MXZ-2D33VA- [E4], [ET4], MXZ-2D42/53VA2- [E4], [ET4] and MXZ-2D53VAH2- [E4] have been added.

**Revision R:**

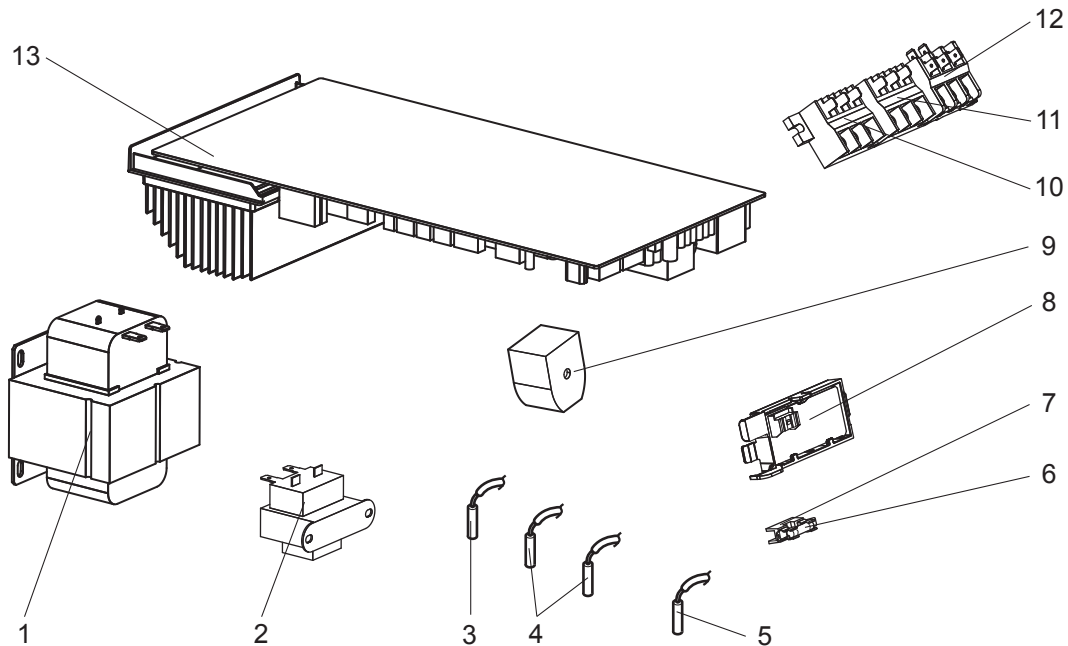
• MXZ-2D33VA- [ER4] and MXZ-2D42/53VA2- [ER4] have been added.

# 1

# RoHS PARTS LIST

MXZ-2D33VA MXZ-2D40VA

## 1-1. OUTDOOR UNIT ELECTRICAL PARTS

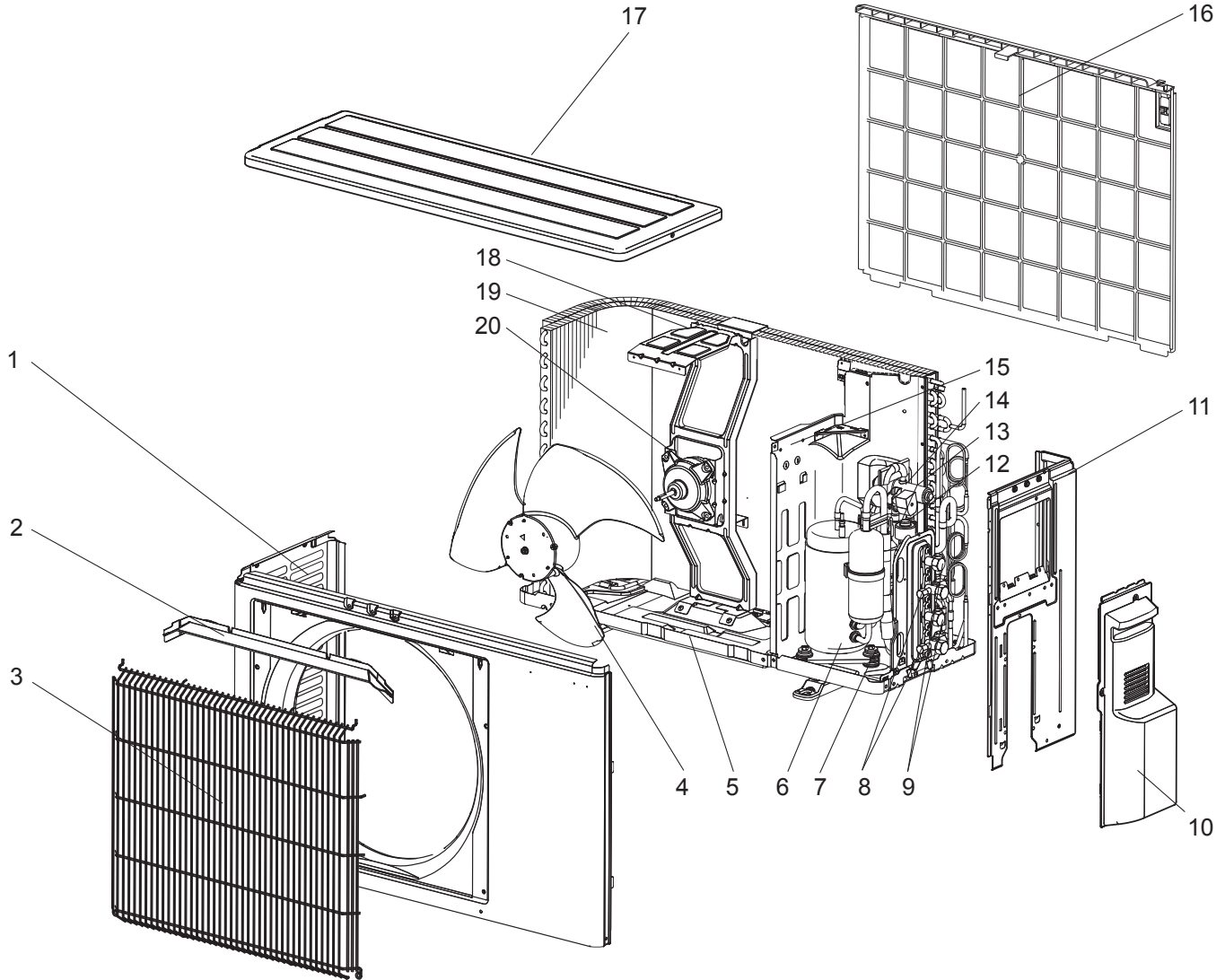


No.	RoHS	Part No.	Part Name	Symbol In Wiring Diagram	Q'ty/unit														Remarks
					MXZ-														
					2D33VA -												2D40VA -		
					E1	E2	E3	E4	ER2	ER3	ER4	ET2	ET3	ET4	E1	ER2			
1	G	E12 G11 337	REACTOR	ACL	1	1	1	1	1	1	1	1	1	1	1	1	1	10A 23μH	
2	G	E12 J63 337	REACTOR	ACL2	1	1	1	1	1	1	1	1	1	1	1	1	2A 25μH		
3	G	E12 C34 307	OUTDOOR HEAT EXCHANGER TEMPERATURE THERMISTOR	RT68	1	1	1		1	1		1	1		1	1			
		E12 W50 307						1			1			1					
4	G	E12 J63 308	THERMISTOR SET	RT61,62	1	1	1		1	1		1	1		1	1	DEFROST, DISCHARGE		
		E12 78A 308						1			1			1					
5	G	E12 J63 309	AMBIENT TEMPERATURE THERMISTOR	RT65	1	1	1		1	1		1	1		1	1			
		E12 W50 309						1			1			1					
6	G	E12 784 382	FUSE	F1			1	1		1	1		1	1			T3.15AL250V		
7	G	E17 001 241	FUSE HOLDER				1	1		1	1		1	1					
8	G	E12 J63 329	OUTDOOR DISPLAY P.C. BOARD		1	1	1	1	1	1	1	1	1	1	1	1			
9	G	E12 A47 490	R.V. COIL	21S4	1	1	1	1	1	1	1	1	1	1	1	1			
10	G	E12 935 374	TERMINAL BLOCK	TB2	1	1	1	1	1	1	1	1	1	1	1	1	Indoor unit connecting		
11	G	E12 935 374	TERMINAL BLOCK	TB3	1	1	1	1	1	1	1	1	1	1	1	1			
12	G	E12 F29 374	TERMINAL BLOCK	TB1	1	1	1	1	1	1	1	1	1	1	1	1	Power supply		
13	G	E12 N43 451	INVERTER P.C. BOARD		1	1			1			1					Including heat sink and RT64		
		E12 R27 451						1			1								
		E12 60D 451						1			1			1					
		E12 N68 451												1	1				

# RoHS PARTS LIST (RoHS compliant)

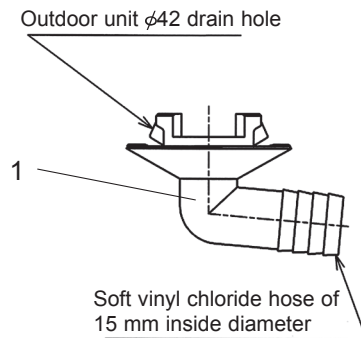
MXZ-2D33VA MXZ-2D40VA

## 1-2. OUTDOOR UNIT STRUCTURAL PARTS AND FUNCTIONAL PARTS



MXZ-2D33VA MXZ-2D40VA

## 1-3. DRAIN SOCKET



No.	RoHS	Part No.	Part Name	Symbol In Wiring Diagram	Q'ty/unit										Remarks		
					MXZ-												
					2D33VA -					2D40VA -							
					E1	E2	E3	E4	ER2	ER3	ER4	ET2	ET3	ET4		E1	ER2
1	G	E12 838 704	DRAIN SOCKET		1	1	1	1	1	1	1	1	1	1	1	1	

# RoHS PARTS LIST (RoHS compliant)

## MXZ-2D33VA MXZ-2D40VA

### 1-2. OUTDOOR UNIT STRUCTURAL PARTS AND FUNCTIONAL PARTS

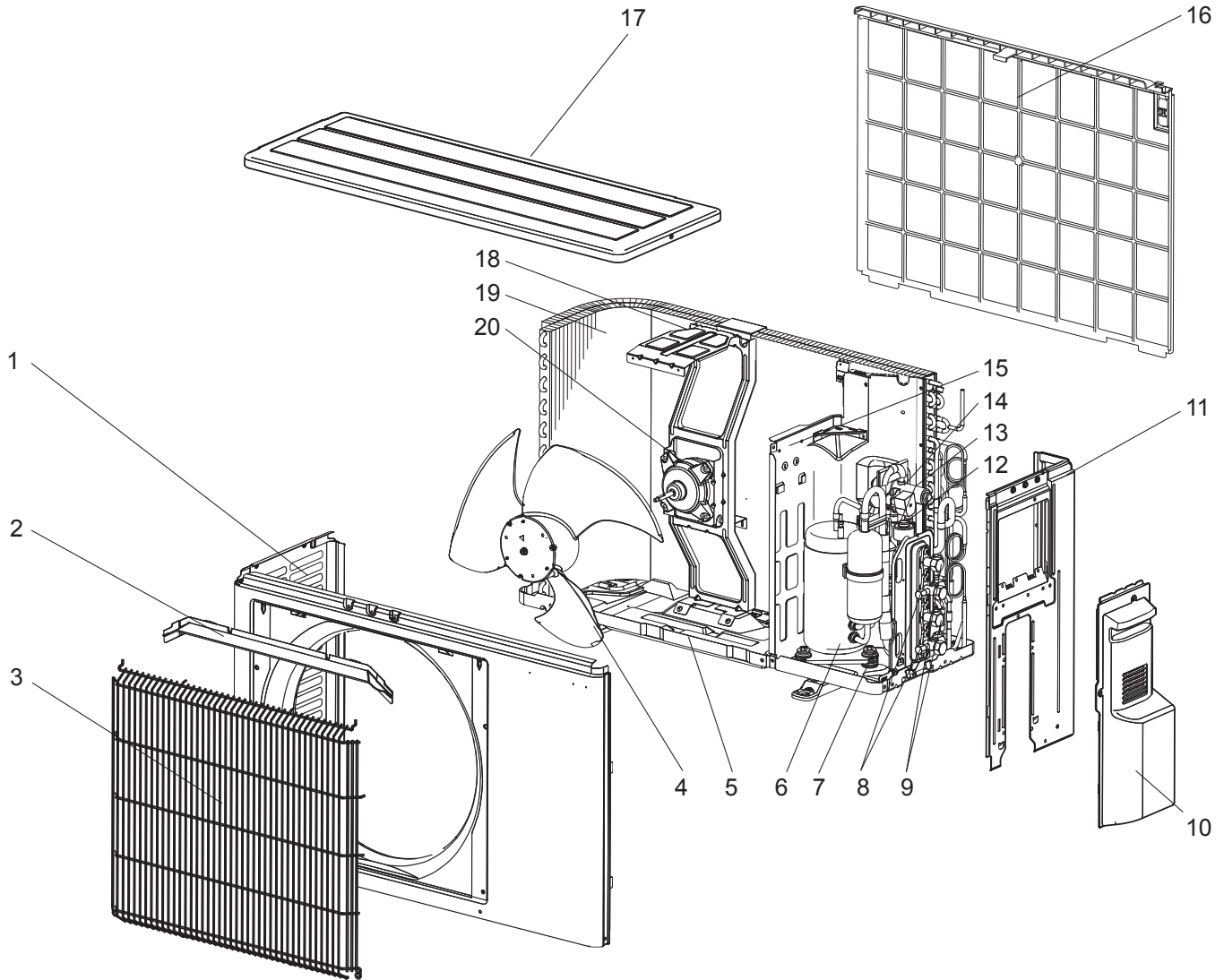
Part numbers that are circled are not shown in the illustration.

No.	RoHS	Part No.	Part Name	Symbol In Wiring Diagram	Q'ty/unit												Remarks
					MXZ-												
					2D33VA -										2D40VA -		
					E1	E2	E3	E4	ER2	ER3	ER4	ET2	ET3	ET4	E1	ER2	
1	G	E12 J63 232 E12 J64 232	CABINET		1	1	1	1	1	1	1	1	1	1	1	1	
2	G	E12 J63 531	ICE GUARD		1	1	1	1	1	1	1	1	1	1	1	1	
3	G	E12 J63 521	GRILLE		1	1	1	1	1	1	1	1	1	1	1	1	
4	G	E12 927 501	PROPELLER FAN		1	1	1	1	1	1	1	1	1	1	1	1	
5	G	E12 J63 290 E12 J64 290	BASE		1	1	1	1	1	1	1	1	1	1	1	1	
6	G	E12 D69 900 E12 F24 900	COMPRESSOR	MC	1	1	1	1	1	1	1	1	1	1	1	1	KNB073FFDHC KNB092FFDHC
7	G	E12 065 506	COMPRESSOR RUBBER SET		3	3	3	3	3	3	3	3	3	3	3	3	3 RUBBERS/SET
8	G	E12 927 661 E12 T95 661	STOP VALVE (GAS) 3/8		2	2	2	2	2	2	2	2	2	2	2	2	Ø9.52
9	G	E12 927 662 E12 T95 662	STOP VALVE (LIQUID) 1/4		2	2	2	2	2	2	2	2	2	2	2	2	Ø6.35
10	G	E12 J63 245	SERVICE PANEL		1	1	1	1	1	1	1	1	1	1	1	1	
11	G	E12 J63 233	BACK PANEL		1	1	1	1	1	1	1	1	1	1	1	1	
12	G	E12 735 640	EXPANSION VALVE		1	1	1	1	1	1	1	1	1	1	1	1	ROOM B
13	G	E12 F25 493	EXPANSION VALVE COIL	LEV B	1	1	1	1	1	1	1	1	1	1	1	1	
14	G	E12 927 961	4-WAY VALVE		1	1	1	1	1	1	1	1	1	1	1	1	
15	G	E12 G10 293 E12 G11 293	SEPARATOR		1	1	1	1	1	1	1	1	1	1	1	1	
16	G	E12 G04 523 E12 G05 523	CONDENSER NET		1	1	1	1	1	1	1	1	1	1	1	1	
17	G	E12 J63 297	TOP PANEL		1	1	1	1	1	1	1	1	1	1	1	1	
18	G	E12 927 515 E12 929 515 E12 W60 515	MOTOR SUPPORT		1	1	1	1	1	1	1	1	1	1	1	1	
19	G	E12 G04 630 E12 G05 630	OUTDOOR HEAT EXCHANGER		1	1	1	1	1	1	1	1	1	1	1	1	
20	G	E12 G11 301	OUTDOOR FAN MOTOR	MF	1	1	1	1	1	1	1	1	1	1	1	1	RC0J50-□□
21	Ⓒ	E12 339 936 E12 838 936	CAPILLARY TUBE		2	2	2	2	2	2	2	2	2	2	2	2	Ø3.0 × Ø1.4 × 600 Ø3.0 × Ø2.0 × 200
22	Ⓒ	E12 735 640	EXPANSION VALVE		1	1	1	1	1	1	1	1	1	1	1	1	ROOM A
23	Ⓒ	E12 F24 493	EXPANSION VALVE COIL	LEV A	1	1	1	1	1	1	1	1	1	1	1	1	

# RoHS PARTS LIST (RoHS compliant)

MXZ-2D42VA MXZ-2D42VA2

## 1-4. OUTDOOR UNIT STRUCTURAL PARTS AND FUNCTIONAL PARTS



# RoHS PARTS LIST (RoHS compliant)

## MXZ-2D42VA MXZ-2D42VA2

### 1-4. OUTDOOR UNIT STRUCTURAL PARTS AND FUNCTIONAL PARTS

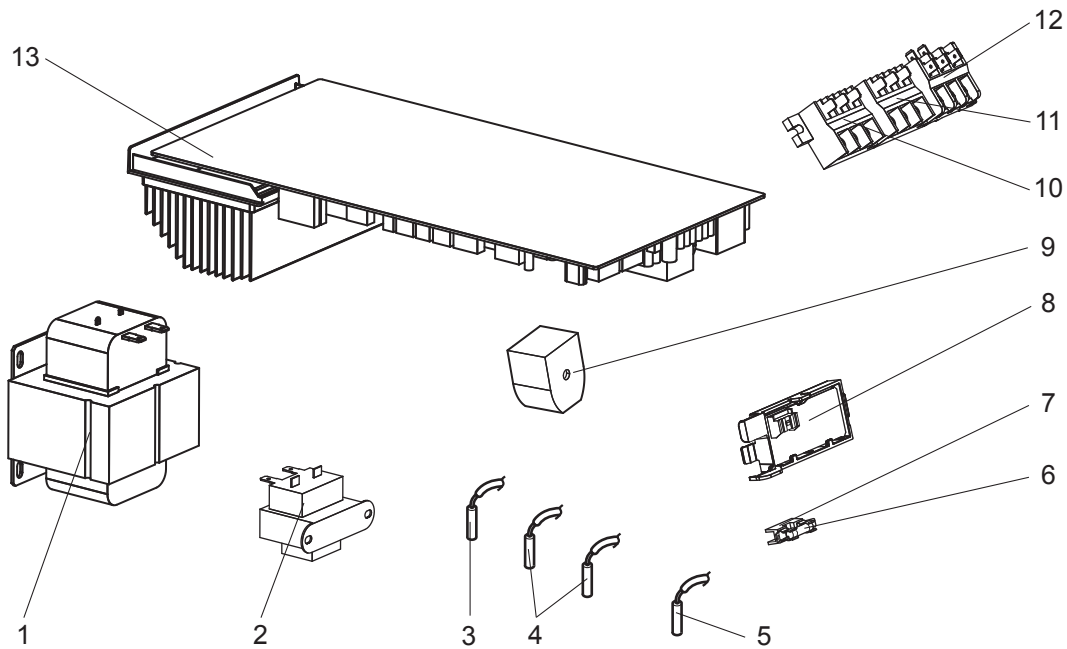
Part numbers that are circled are not shown in the illustration.

No.	RoHS	Part No.	Part Name	Symbol In Wiring Diagram	Q'ty/unit												Remarks
					MXZ-												
					2D42VA -						2D42VA2 -						
					E2	E3	ER3	ET2	ET3	E3	E4	ER3	ER4	ET3	ET4		
1	G	E12 J63 232	CABINET		1	1	1	1	1	1	1	1	1	1			
2	G	E12 J63 531	ICE GUARD		1	1	1	1	1	1	1	1	1	1			
3	G	E12 J63 521	GRILLE		1	1	1	1	1	1	1	1	1	1			
4	G	E12 927 501	PROPELLER FAN		1	1	1	1	1	1	1	1	1	1			
5	G	E12 J63 290	BASE		1	1	1	1	1	1	1	1	1	1			
6	G	E12 E05 900	COMPRESSOR	MC	1	1	1	1	1	1	1	1	1	1		SNB130FGBHT	
7	G	E12 C34 506	COMPRESSOR RUBBER SET		3	3	3	3	3	3	3	3	3	3		3 RUBBERS/SET	
8	G	E12 927 661	STOP VALVE (GAS) 3/8		2	2	2	2	2	2		2		2		Ø9.52	
		E12 T95 661								2		2		2			
9	G	E12 927 662	STOP VALVE (LIQUID) 1/4		2	2	2	2	2	2		2		2		Ø6.35	
		E12 T95 662								2		2		2			
10	G	E12 J63 245	SERVICE PANEL		1	1	1	1	1	1	1	1	1	1			
11	G	E12 J63 233	BACK PANEL		1	1	1	1	1	1	1	1	1	1			
12	G	E12 735 640	EXPANSION VALVE		1	1	1	1	1	1	1	1	1	1		ROOM B	
13	G	E12 F25 493	EXPANSION VALVE COIL	LEV B	1	1	1	1	1	1	1	1	1	1			
14	G	E12 A47 961	4-WAY VALVE		1	1	1	1	1	1	1	1	1	1			
15	G	E12 G11 293	SEPARATOR		1	1	1	1	1	1	1	1	1	1			
16	G	E12 G06 523	CONDENSER NET		1	1	1	1	1	1	1	1	1	1			
17	G	E12 J63 297	TOP PANEL		1	1	1	1	1	1	1	1	1	1			
18	G	E12 929 515	MOTOR SUPPORT		1	1	1	1	1								
		E12 R50 515							1	1	1	1	1	1			
19	G	E12 G06 630	OUTDOOR HEAT EXCHANGER		1	1	1	1	1	1	1	1	1	1			
20	G	E12 G11 301	OUTDOOR FAN MOTOR	MF	1	1	1	1	1	1	1	1	1	1		RC0J50-□□	
⑳	G	E12 339 936	CAPILLARY TUBE		4	4	4	4	4	4	4	4	4	4		Ø3.0 × Ø1.4 × 600	
		E12 838 936			2	2	2	2	2	2	2	2	2	2	2		Ø3.0 × Ø2.0 × 200
㉑	G	E12 735 640	EXPANSION VALVE		1	1	1	1	1	1	1	1	1	1		ROOM A	
㉒	G	E12 F24 493	EXPANSION VALVE COIL	LEV A	1	1	1	1	1	1	1	1	1	1			

# RoHS PARTS LIST (RoHS compliant)

MXZ-2D42VA MXZ-2D42VA2

## 1-5. OUTDOOR UNIT ELECTRICAL PARTS

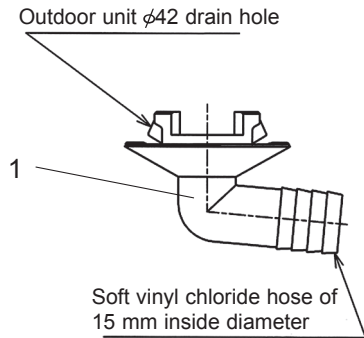


No.	RoHS	Part No.	Part Name	Symbol In Wiring Diagram	Q'ty/unit												Remarks
					MXZ-												
					2D42VA -						2D42VA2 -						
					E2	E3	ER3	ET2	ET3	E3	E4	ER3	ER4	ET3	ET4		
1	G	E12 G11 337	REACTOR	ACL	1	1	1	1	1	1	1	1	1	1	1	1	10A 23μH
2	G	E12 J63 337	REACTOR	ACL2	1	1	1	1	1	1	1	1	1	1	1	1	2A 25μH
3	G	E12 C34 307	OUTDOOR HEAT EXCHANGER TEMPERATURE THERMISTOR	RT68	1	1	1	1	1	1		1		1			
		E12 W50 307								1		1		1			
4	G	E12 J63 308	THERMISTOR SET	RT61,62	1	1	1	1	1	1		1		1			DEFROST, DISCHARGE
		E12 78A 308								1		1		1			
5	G	E12 J63 309	AMBIENT TEMPERATURE THERMISTOR	RT65	1	1	1	1	1	1		1		1			
		E12 W50 309									1		1		1		
6	G	E12 784 382	FUSE	F1		1	1		1	1	1	1	1	1	1	1	T3.15AL250V
7	G	E17 001 241	FUSE HOLDER			1	1		1	1	1	1	1	1	1	1	
8	G	E12 J63 329	OUTDOOR DISPLAY P.C. BOARD		1	1	1	1	1	1	1	1	1	1	1	1	
9	G	E12 A47 490	R.V. COIL	21S4	1	1	1	1	1	1	1	1	1	1	1	1	
10	G	E12 935 374	TERMINAL BLOCK	TB2	1	1	1	1	1	1	1	1	1	1	1	1	Indoor unit connecting
11	G	E12 935 374	TERMINAL BLOCK	TB3	1	1	1	1	1	1	1	1	1	1	1	1	Power supply
12	G	E12 F29 374	TERMINAL BLOCK	TB1	1	1	1	1	1	1	1	1	1	1	1	1	
13	G	E12 N45 451	INVERTER P.C. BOARD		1			1									Including heat sink and RT64
		E12 R30 451				1	1		1								
		E12 W53 451								1		1		1			
		E12 61D 451									1		1		1		



# RoHS PARTS LIST (RoHS compliant)

**MXZ-2D42VA MXZ-2D42VA2**  
**1-6. DRAIN SOCKET**

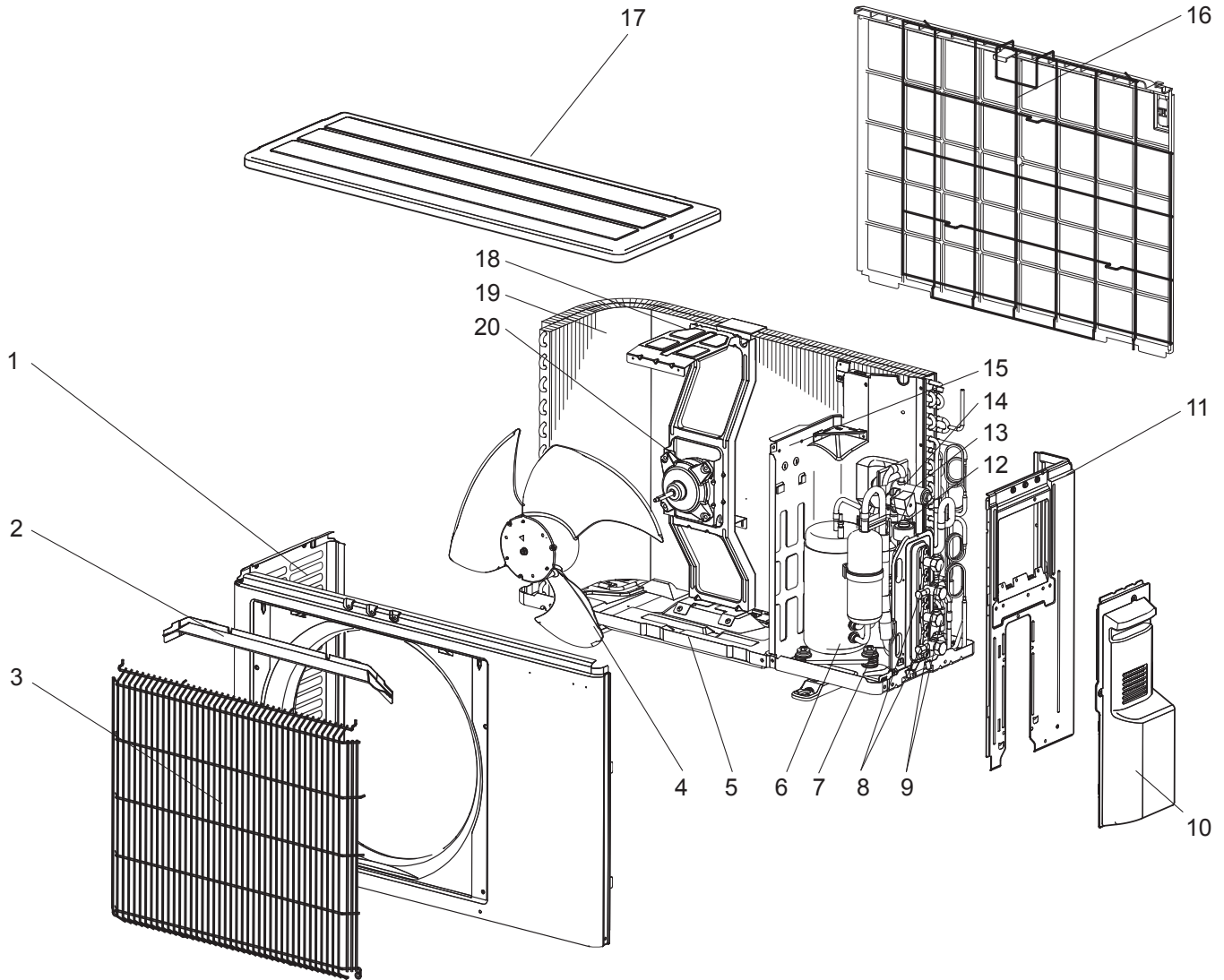


No.	RoHS	Part No.	Part Name	Symbol In Wiring Diagram	Q'ty/unit												Remarks
					MXZ-												
					2D42VA -					2D42VA2 -							
					E2	E3	ER3	ET2	ET3	E3	E4	ER3	ER4	ET3	ET4		
1	G	E12 838 704	DRAIN SOCKET		1	1	1	1	1	1	1	1	1	1	1		

# RoHS PARTS LIST (RoHS compliant)

MXZ-2D53VA MXZ-2D53VA2

## 1-7. OUTDOOR UNIT STRUCTURAL PARTS AND FUNCTIONAL PARTS



# RoHS PARTS LIST (RoHS compliant)

## MXZ-2D53VA MXZ-2D53VA2

### 1-7. OUTDOOR UNIT STRUCTURAL PARTS AND FUNCTIONAL PARTS

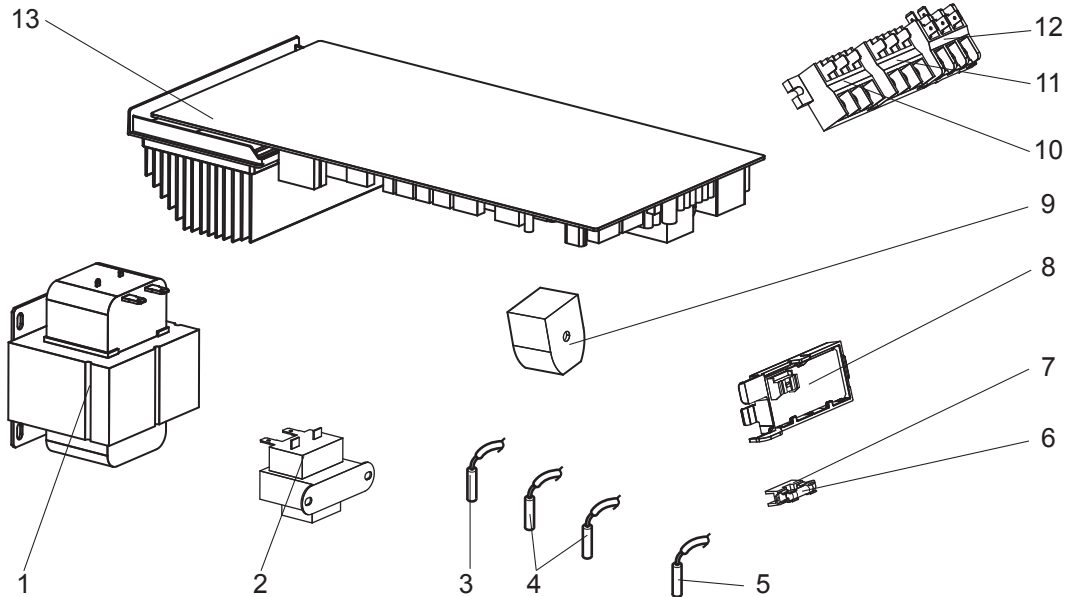
Part numbers that are circled are not shown in the illustration.

No.	RoHS	Part No.	Part Name	Symbol In Wiring Diagram	Q'ty/unit												Remarks
					MXZ-												
					2D53VA -						2D53VA2 -						
					E1	E2	E3	ER2	ER3	ET2	ET3	E3	E4	ER3	ER4	ET3	
1	G	E12 J63 232	CABINET		1	1	1	1	1	1	1	1	1	1	1	1	
2	G	E12 J63 531	ICE GUARD		1	1	1	1	1	1	1	1	1	1	1	1	
3	G	E12 J63 521	GRILLE		1	1	1	1	1	1	1	1	1	1	1	1	
4	G	E12 927 501	PROPELLER FAN		1	1	1	1	1	1	1	1	1	1	1	1	
5	G	E12 J63 290	BASE		1	1	1	1	1	1	1	1	1	1	1	1	
6	G	E12 E05 900	COMPRESSOR	MC	1	1	1	1	1	1	1	1	1	1	1	1	SNB130FGBHT
7	G	E12 C34 506	COMPRESSOR RUBBER SET		3	3	3	3	3	3	3	3	3	3	3	3	3 RUBBERS/ SET
8	G	E12 927 661	STOP VALVE (GAS) 3/8		2	2	2	2	2	2	2	2		2		2	Ø9.52
												2		2		2	
9	G	E12 927 662	STOP VALVE (LIQUID) 1/4		2	2	2	2	2	2	2	2		2		2	Ø6.35
												2		2		2	
10	G	E12 J63 245	SERVICE PANEL		1	1	1	1	1	1	1	1	1	1	1	1	
11	G	E12 J63 233	BACK PANEL		1	1	1	1	1	1	1	1	1	1	1	1	
12	G	E12 735 640	EXPANSION VALVE		1	1	1	1	1	1	1	1	1	1	1	1	ROOM B
13	G	E12 F25 493	EXPANSION VALVE COIL	LEV B	1	1	1	1	1	1	1	1	1	1	1	1	
14	G	E12 A47 961	4-WAY VALVE		1	1	1	1	1	1	1	1	1	1	1	1	
15	G	E12 G11 293	SEPARATOR		1	1	1	1	1	1	1	1	1	1	1	1	
16	G	E12 G06 523	CONDENSER NET		1	1	1	1	1	1	1	1	1	1	1	1	
17	G	E12 J63 297	TOP PANEL		1	1	1	1	1	1	1	1	1	1	1	1	
18	G	E12 929 515	MOTOR SUPPORT		1	1	1	1	1	1	1						
												1	1	1	1	1	
19	G	E12 G06 630	OUTDOOR HEAT EXCHANGER		1	1	1	1	1	1	1	1	1	1	1	1	
20	G	E12 G11 301	OUTDOOR FAN MOTOR	MF	1	1	1	1	1	1	1	1	1	1	1	1	RC0J50-□□
⑳	G	E12 339 936	CAPILLARY TUBE		4	4	4	4	4	4	4	4	4	4	4	4	Ø3.0 × Ø1.4 × 600
㉑	G	E12 735 640	EXPANSION VALVE		1	1	1	1	1	1	1	1	1	1	1	1	ROOM A
㉒	G	E12 F24 493	EXPANSION VALVE COIL	LEV A	1	1	1	1	1	1	1	1	1	1	1	1	

# RoHS PARTS LIST (RoHS compliant)

MXZ-2D53VA MXZ-2D53VA2

## 1-8. OUTDOOR UNIT ELECTRICAL PARTS

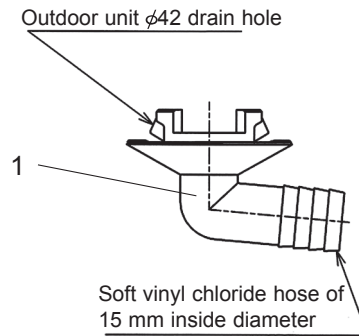


No.	RoHS	Part No.	Part Name	Symbol In Wiring Diagram	Q'ty/unit												Remarks		
					MXZ-														
					2D53VA -						2D53VA2 -								
					E1	E2	E3	ER2	ER3	ET2	ET3	E3	E4	ER3	ER4	ET3		ET4	
1	G	E12 G11 337	REACTOR	ACL	1	1	1	1	1	1	1	1	1	1	1	1	1	10A 23μH	
2	G	E12 J63 337	REACTOR	ACL2	1	1	1	1	1	1	1	1	1	1	1	1	1	2A 25μH	
3	G	E12 C34 307	OUTDOOR HEAT EXCHANGER TEMPERATURE THERMISTOR	RT68	1	1	1	1	1	1	1	1	1	1	1	1			
		E12 W50 307										1	1	1					
4	G	E12 J63 308	THERMISTOR SET	RT61,62	1	1	1	1	1	1	1	1	1	1	1	1	1	DEFROST, DISCHARGE	
		E12 78A 308										1	1	1	1	1	1		1
5	G	E12 J63 309	AMBIENT TEMPERATURE THERMISTOR	RT65	1	1	1	1	1	1	1	1	1	1	1	1	1		
		E12 W50 309										1	1	1	1	1	1	1	
6	G	E12 784 382	FUSE	F1			1	1	1	1	1	1	1	1	1	1	1	T3.15AL250V	
7	G	E17 001 241	FUSE HOLDER				1	1	1	1	1	1	1	1	1	1	1		
8	G	E12 J63 329	OUTDOOR DISPLAY P.C. BOARD		1	1	1	1	1	1	1	1	1	1	1	1	1		
9	G	E12 A47 490	R.V. COIL	21S4	1	1	1	1	1	1	1	1	1	1	1	1	1		
10	G	E12 935 374	TERMINAL BLOCK	TB2	1	1	1	1	1	1	1	1	1	1	1	1	1	Indoor unit connecting	
11	G	E12 935 374	TERMINAL BLOCK	TB3	1	1	1	1	1	1	1	1	1	1	1	1	1		
12	G	E12 F29 374	TERMINAL BLOCK	TB1	1	1	1	1	1	1	1	1	1	1	1	1	1	Power supply	
13	G	E12 P58 451	INVERTER P.C. BOARD		1	1	1	1	1	1	1	1	1	1	1	1	1	Including heat sink and RT64	
		E12 R33 451					1	1	1										
		E12 W58 451										1	1	1	1	1	1		1
		E12 62D 451											1	1	1	1	1		1

# RoHS PARTS LIST (RoHS compliant)

**MXZ-2D53VA MXZ-2D53VA2**

**1-9. DRAIN SOCKET**

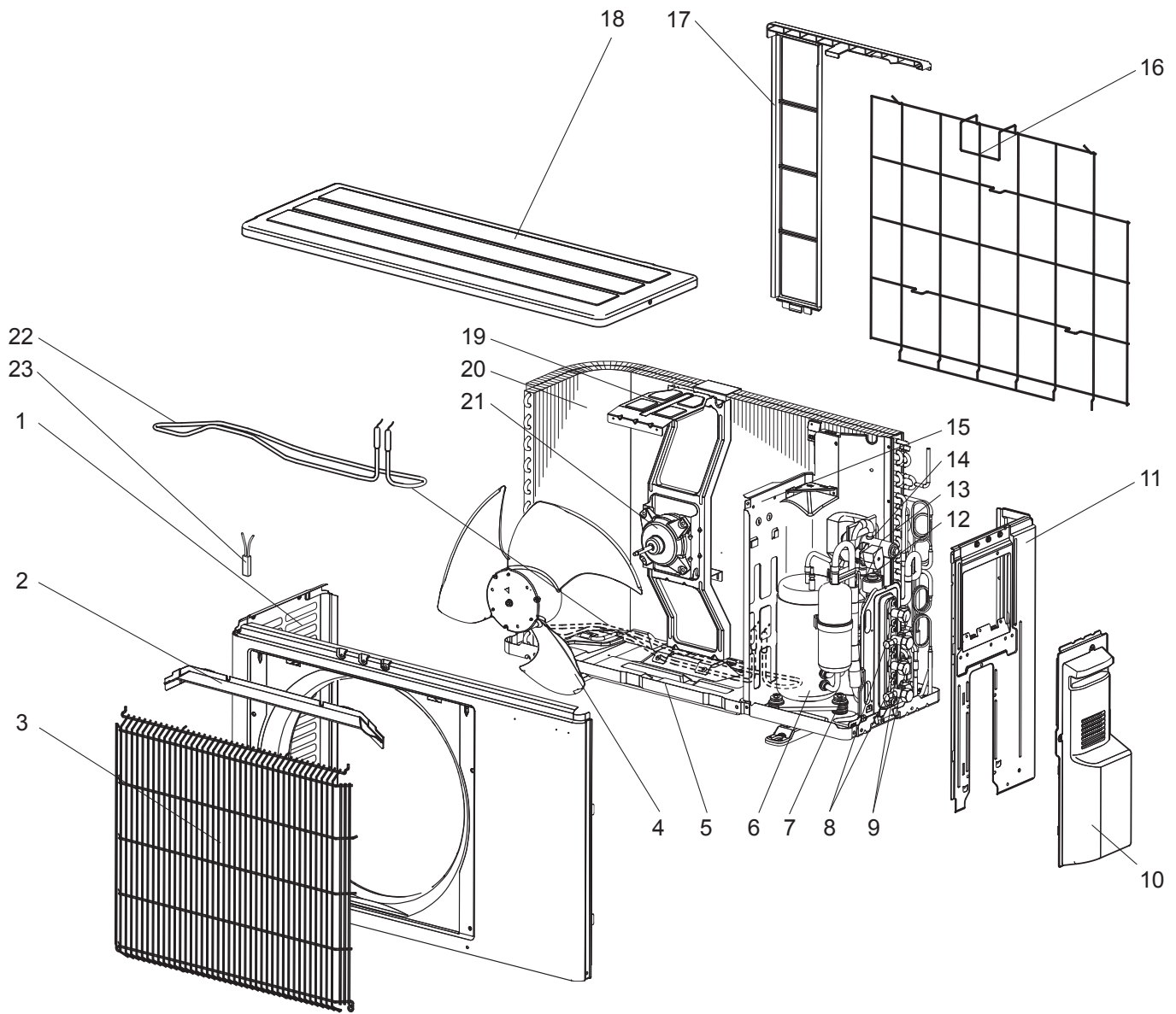


No.	RoHS	Part No.	Part Name	Symbol In Wiring Diagram	Q'ty/unit														Remarks	
					MXZ-															
					2D53VA -							2D53VA2 -								
					E1	E2	E3	ER2	ER3	ET2	ET3	E3	E4	ER3	ER4	ET3	ET4			
1	G	E12 838 704	DRAIN SOCKET		1	1	1	1	1	1	1	1	1	1	1	1	1	1	1	

# RoHS PARTS LIST (RoHS compliant)

MXZ-2D53VAH MXZ-2D53VAH2

## 1-10. OUTDOOR UNIT STRUCTURAL PARTS AND FUNCTIONAL PARTS



# RoHS PARTS LIST (RoHS compliant)

## MXZ-2D53VAH MXZ-2D53VAH2

### 1-10. OUTDOOR UNIT STRUCTURAL PARTS AND FUNCTIONAL PARTS

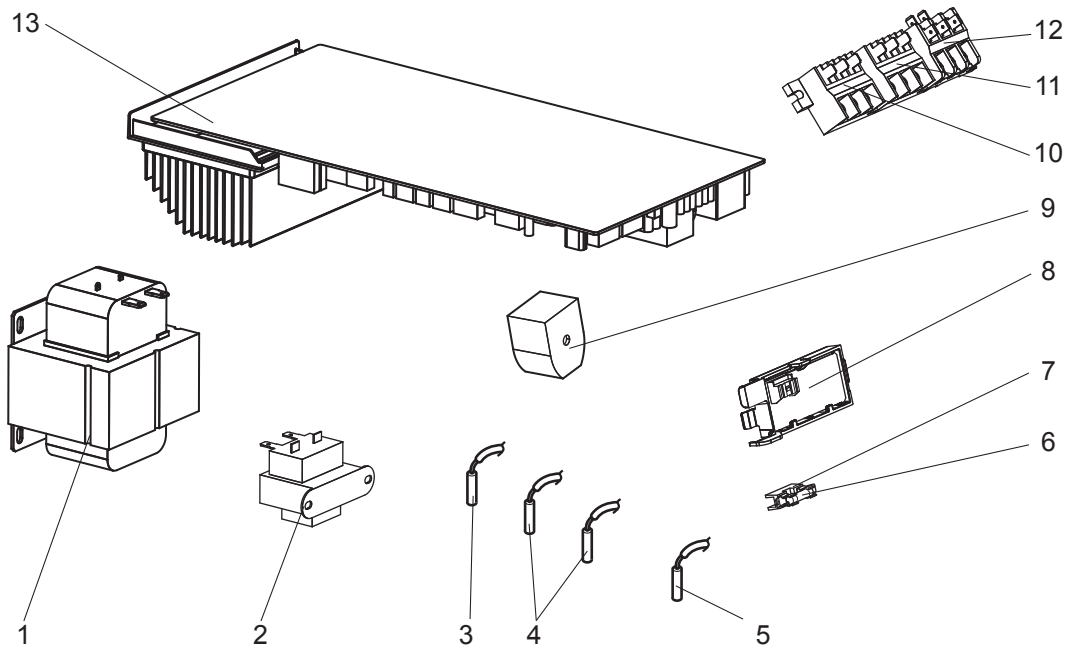
Part numbers that are circled are not shown in the illustration.

No.	RoHS	Part No.	Part Name	Symbol In Wiring Diagram	Q'ty/unit								Remarks
					MXZ-								
					2D53VAH -					2D53VAH2 -			
					E1	E2	E3	ER2	ER3	E3	E4		
1	G	E12 J63 232	CABINET		1	1	1	1	1	1	1		
2	G	E12 J63 531	ICE GUARD		1	1	1	1	1	1	1		
3	G	E12 J63 521	GRILLE		1	1	1	1	1	1	1		
4	G	E12 927 501	PROPELLER FAN		1	1	1	1	1	1	1		
5	G	E12 J66 290	BASE		1	1	1	1	1	1	1		
6	G	E12 E05 900	COMPRESSOR	MC	1	1	1	1	1	1	1	SNB130FGBHT	
7	G	E12 C34 506	COMPRESSOR RUBBER SET		3	3	3	3	3	3	3	3 RUBBERS/SET	
8	G	E12 927 661	STOP VALVE (GAS) 3/8		2	2	2	2	2	2		Ø9.52	
		E12 T95 661								2			
9	G	E12 927 662	STOP VALVE (LIQUID) 1/4		2	2	2	2	2	2		Ø6.35	
		E12 T95 662								2			
10	G	E12 J63 245	SERVICE PANEL		1	1	1	1	1	1	1		
11	G	E12 J63 233	BACK PANEL		1	1	1	1	1	1	1		
12	G	E12 735 640	EXPANSION VALVE		1	1	1	1	1	1	1	ROOM B	
13	G	E12 F25 493	EXPANSION VALVE COIL	LEV B	1	1	1	1	1	1	1		
14	G	E12 A47 961	4-WAY VALVE		1	1	1	1	1	1	1		
15	G	E12 G14 293	SEPARATOR		1	1	1	1	1	1	1		
16	G	E12 930 525	CONDENSER WIRE NET		1	1	1	1	1	1	1		
17	G	E12 930 523	CONDENSER NET		1	1	1	1	1	1	1		
18	G	E12 J63 297	TOP PANEL		1	1	1	1	1	1	1		
19	G	E12 929 515	MOTOR SUPPORT		1	1	1	1	1				
		E12 R50 515							1	1			
20	G	E12 G06 630	OUTDOOR HEAT EXCHANGER		1	1	1	1	1	1	1		
21	G	E12 G11 301	OUTDOOR FAN MOTOR	MF	1	1	1	1	1	1	1	RC0J50-□□	
22	G	E12 C36 526	DEFROST HEATER	H	1	1	1	1	1	1	1		
23	G	E12 C36 381	HEATER PROTECTOR	26H	1	1	1	1	1	1	1		
24	G	E12 339 936	CAPILLARY TUBE		4	4	4	4	4	4	4	Ø3.0 × Ø1.4 × 600	
		E12 838 936			2	2	2	2	2	2	2	Ø3.0 × Ø2.0 × 200	
25	G	E12 735 640	EXPANSION VALVE		1	1	1	1	1	1	1	ROOM A	
26	G	E12 F24 493	EXPANSION VALVE COIL	LEV A	1	1	1	1	1	1	1		

# RoHS PARTS LIST (RoHS compliant)

MXZ-2D53VAH MXZ-2D53VAH2

## 1-11. OUTDOOR UNIT ELECTRICAL PARTS





# RoHS PARTS LIST (RoHS compliant)

**MXZ-2D53VAH MXZ-2D53VAH2**

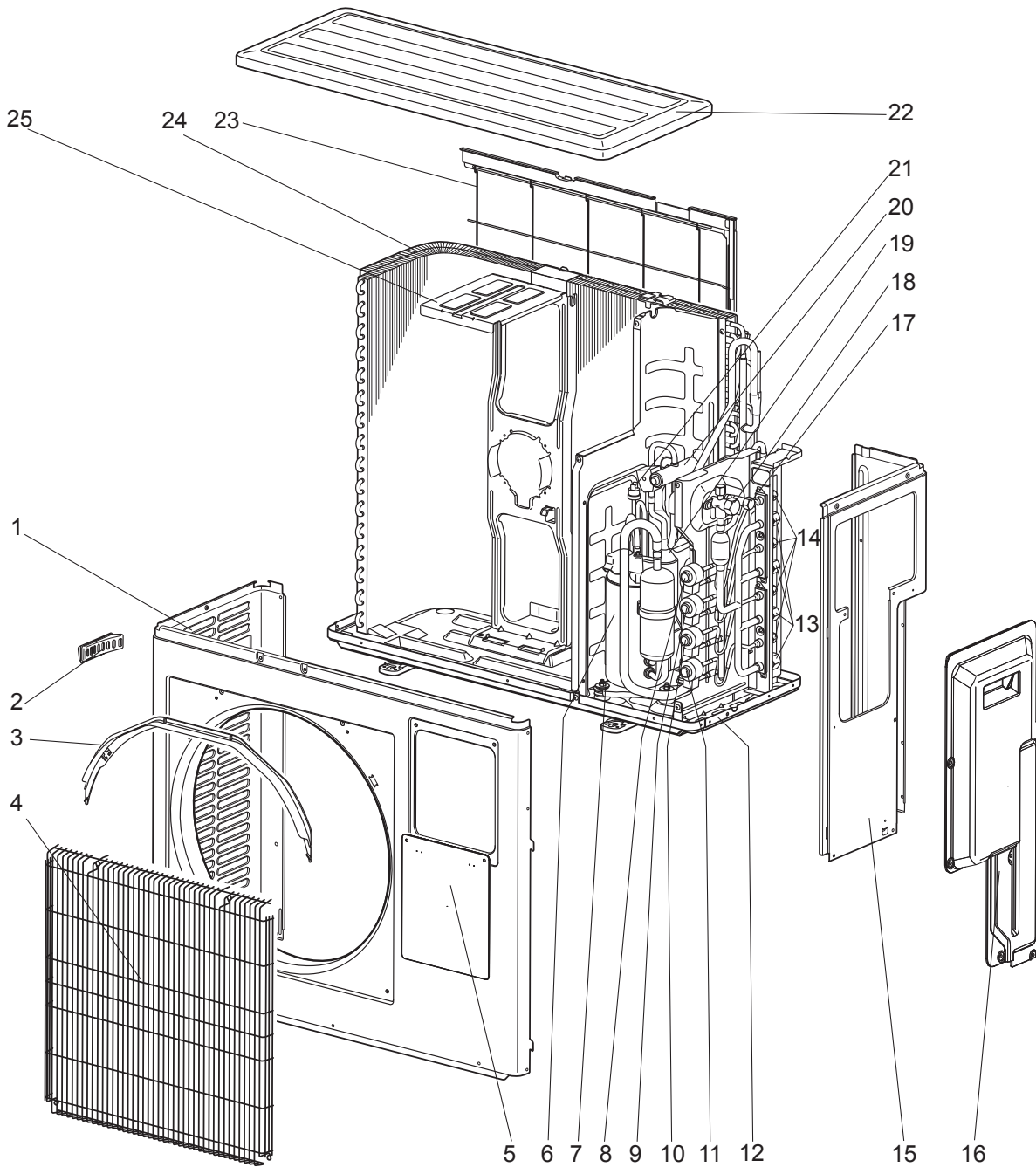
## 1-11. OUTDOOR UNIT ELECTRICAL PARTS

No.	RoHS	Part No.	Part Name	Symbol In Wiring Diagram	Q'ty/unit								Remarks
					MXZ-								
					2D53VAH -					2D53VAH2 -			
					E1	E2	E3	ER2	ER3	E3	E4		
1	G	E12 G11 337	REACTOR	ACL	1	1	1	1	1	1	1	10A 23μH	
2	G	E12 J63 337	REACTOR	ACL2	1	1	1	1	1	1	1	2A 25μH	
3	G	E12 C34 307	OUTDOOR HEAT EXCHANGER TEMPERATURE THERMISTOR	RT68	1	1	1	1	1	1			
		E12 W50 307									1		
4	G	E12 J63 308	THERMISTOR SET	RT61,62	1	1	1	1	1	1		DEFROST, DISCHARGE	
		E12 78A 308									1		
5	G	E12 J63 309	AMBIENT TEMPERATURE THERMISTOR	RT65	1	1	1	1	1	1			
		E12 W50 309									1		
6	G	E12 784 382	FUSE	F1			1		1	1	1	T3.15AL250V	
7	G	E17 001 241	FUSE HOLDER				1		1	1	1		
8	G	E12 J63 329	OUTDOOR DISPLAY P.C. BOARD		1	1	1	1	1	1	1		
9	G	E12 A47 490	R.V. COIL	21S4	1	1	1	1	1	1	1		
10	G	E12 935 374	TERMINAL BLOCK	TB2	1	1	1	1	1	1	1	Indoor unit connecting	
11	G	E12 935 374	TERMINAL BLOCK	TB3	1	1	1	1	1	1	1		
12	G	E12 F29 374	TERMINAL BLOCK	TB1	1	1	1	1	1	1	1	Power supply	
13	G	E12 N49 451	INVERTER P.C. BOARD		1	1		1				Including heat sink and RT64	
		E12 R36 451					1		1				
		E12 W60 451								1			
		E12 69D 451									1		

# RoHS PARTS LIST

MXZ-3D54VA MXZ-3D54VA2 MXZ-3D68VA MXZ-4D72VA

## 1-12. OUTDOOR UNIT STRUCTURAL PARTS AND FUNCTIONAL PARTS



# RoHS PARTS LIST

## MXZ-3D54VA MXZ-3D54VA2 MXZ-3D68VA MXZ-4D72VA

### 1-12. OUTDOOR UNIT STRUCTURAL PARTS AND FUNCTIONAL PARTS

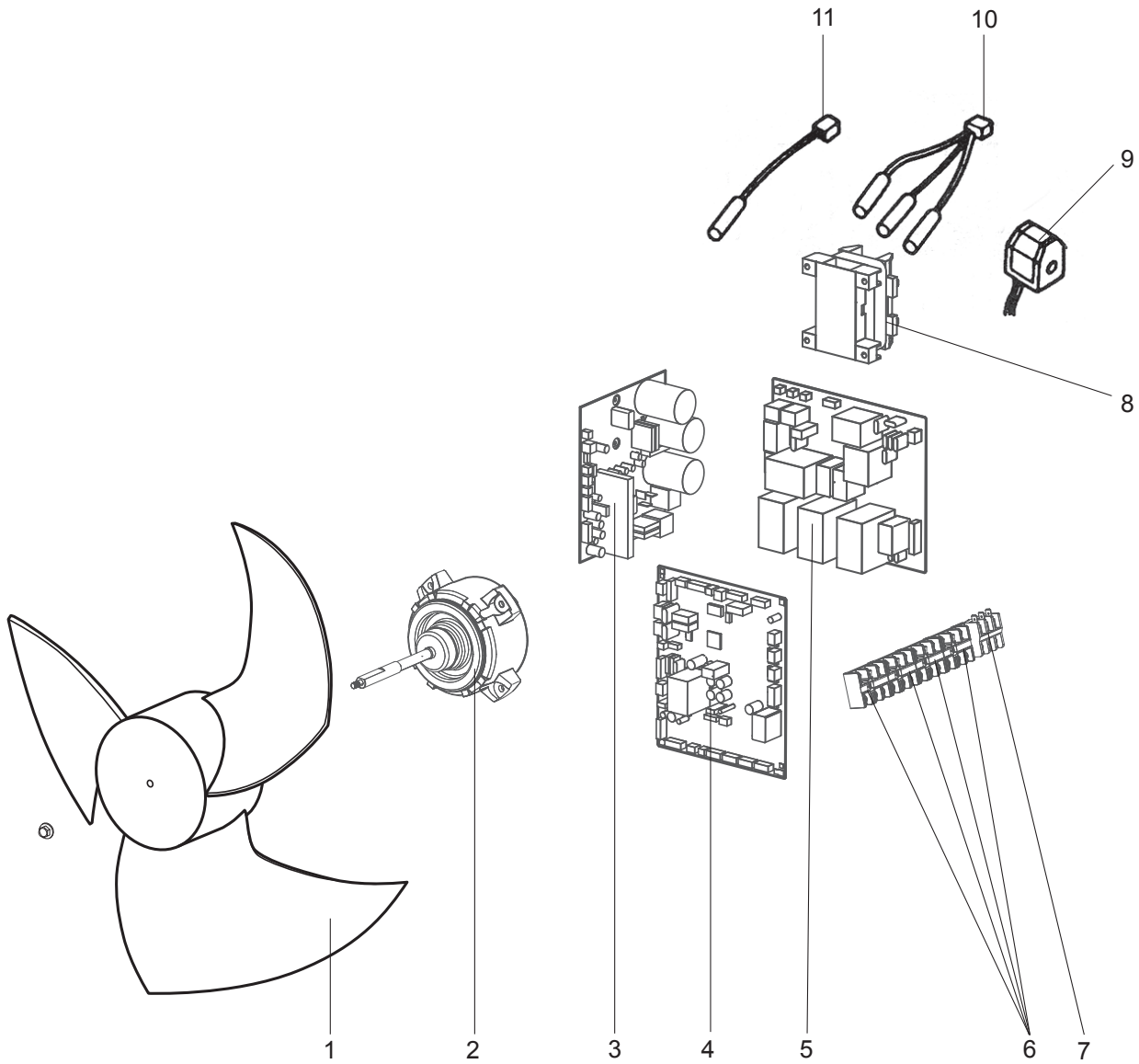
Part numbers that are circled are not shown in the illustration.

No.	RoHS	Part No.	Part Name	Symbol In Wiring Diagram	Q'ty/unit																								Remarks
					MXZ-																								
					3D54VA -						3D54VA2 -						3D68VA -						4D72VA -						
E1	E2	E3	ER2	ER3	ET2	ET3	E1	E2	E3	ER2	ER3	ET2	ET3	E1	E2	E3	ER2	ER3	ET2	ET3	E1	E2	E3	ER2	ER3	ET2	ET3		
1	G	E12 J69 232	CABINET		1	1	1	1	1	1	1	1	1	1	1	1	1	1	1	1	1	1	1	1	1	1			
2	G	E12 817 009	HANDLE		1	1	1	1	1	1	1	1	1	1	1	1	1	1	1	1	1	1	1	1	1	1			
3	G	E12 J69 531	ICE GUARD		1	1	1	1	1	1	1	1	1	1	1	1	1	1	1	1	1	1	1	1	1	1			
4	G	E12 J69 521	GRILLE		1	1	1	1	1	1	1	1	1	1	1	1	1	1	1	1	1	1	1	1	1	1			
5	G	E12 D36 246	SUB PANEL		1	1	1	1	1	1	1	1	1	1	1	1	1	1	1	1	1	1	1	1	1	1			
6	G	E12 F22 900	COMPRESSOR	MC												1	1	1	1	1	1	1	1	1	1	1			
		E12 F10 900			1	1	1	1	1	1																			
7	G	E12 C34 506	COMPRESSOR RUBBER SET		3	3	3	3	3	3	3	3	3	3	3	3	3	3	3	3	3	3	3	3	3	3			
8	G	E12 851 640	EXPANSION VALVE	LEV D																	1	1	1	1	1	1			
		E12 F21 493	LEV COIL		1	1	1	1	1	1	1	1	1	1	1	1	1	1	1	1	1	1	1	1	1	1	1		
9	G	E12 851 640	EXPANSION VALVE	LEV C	1	1	1	1	1	1	1	1	1	1	1	1	1	1	1	1	1	1	1	1	1	1			
		E12 F20 493	LEV COIL		1	1	1	1	1	1	1	1	1	1	1	1	1	1	1	1	1	1	1	1	1	1	1		
10	G	E12 851 640	EXPANSION VALVE	LEV B	1	1	1	1	1	1	1	1	1	1	1	1	1	1	1	1	1	1	1	1	1	1			
		E12 F54 493	LEV COIL		1	1	1	1	1	1	1	1	1	1	1	1	1	1	1	1	1	1	1	1	1	1	1		
11	G	E12 851 640	EXPANSION VALVE		1	1	1	1	1	1	1	1	1	1	1	1	1	1	1	1	1	1	1	1	1	1			
		E12 F15 493	LEV COIL	LEV A, LEV E	2	2	2	2	2	2	2	2	2	2	2	2	2	2	2	2	2	2	2	2	2	2			
12	G	E12 J69 290	BASE		1	1	1	1	1	1	1	1	1	1	1	1	1	1	1	1	1	1	1	1	1				
13	G	E12 D36 666	UNION (GAS)		3	3	3	3	3	3	3	3	3	3	3	3	3	3	3	3	3	3	3	3	3	3			
		E12 D37 666																				1	1	1	1	1	1		
14	G	E12 D36 667	UNION (LIQUID)		3	3	3	3	3	3	3	3	3	3	3	3	3	3	3	3	4	4	4	4	4				
15	G	E12 J69 233	BACK PANEL		1	1	1	1	1	1																			
		E12 J70 233	BACK PANEL									1	1	1	1	1	1	1	1	1	1	1	1	1	1				
16	G	E12 J69 245	SERVICE PANEL		1	1	1	1	1	1	1	1	1	1	1	1	1	1	1	1	1	1	1	1	1				
17	G	E12 D36 662	STOP VALVE (LIQUID) 3/8		1	1	1	1	1	1	1	1	1	1	1	1	1	1	1	1	1	1	1	1	1				
18	G	E12 D36 661	STOP VALVE (GAS) 5/8		1	1	1	1	1	1	1	1	1	1	1	1	1	1	1	1	1	1	1	1	1				
19	G	E12 J69 299	OIL SEPARATOR		1	1	1	1	1	1	1	1	1	1	1	1	1	1	1	1	1	1	1	1	1				
20	G	E12 C18 961	4-WAY VALVE		1	1	1	1	1	1	1	1	1	1	1	1	1	1	1	1	1	1	1	1	1				
21	G	E12 853 646	HIGH PRESSURE SWITCH	HPS											1	1				1	1								
		E12 R24 646	HIGH PRESSURE SWITCH					1	1		1	1		1						1	1					1			
22	G	E12 819 297	TOP PANEL		1	1	1	1	1	1	1	1	1	1	1	1	1	1	1	1	1	1	1	1	1				
23	G	E12 J69 523	REAR GUARD		1	1	1	1	1	1	1	1	1	1	1	1	1	1	1	1	1	1	1	1	1				
24	G	E12 939 630	OUTDOOR HEAT EXCHANGER		1	1					1	1								1	1				1				
		E12 R24 630					1	1						1	1						1	1				1			
25	G	E12 J69 515	MOTOR SUPPORT		1	1	1	1	1	1	1	1	1	1	1	1	1	1	1	1	1	1	1	1	1				
26	G	E12 938 937	CAPILLARY TUBE		8	8	8	8	8	8	8	8	8	8	8	8	8	8	8	8	8	8	8	8	8				
27	G	E12 939 936	CAPILLARY TUBE		3	3	3	3	3	3	3	3	3	3	3	3	3	3	3	3	4	4	4	4	4				
28	G	E12 938 936	CAPILLARY TUBE		1	1	1	1	1	1	1	1	1	1	1	1	1	1	1	1	1	1	1	1	1				
29	G	E12 C18 959	POWER RECEIVER		1	1	1	1	1	1	1	1	1	1	1	1	1	1	1	1	1	1	1	1	1				
30	G	E12 853 640	EXPANSION VALVE		1	1	1	1	1	1	1	1	1	1	1	1	1	1	1	1	1	1	1	1	1				

# RoHS PARTS LIST (RoHS compliant)

MXZ-3D54VA MXZ-3D54VA2 MXZ-3D68VA MXZ-4D72VA

## 1-13. OUTDOOR UNIT FUNCTIONAL PARTS AND ELECTRICAL PARTS



## 1-14. ACCESSORY



# RoHS PARTS LIST (RoHS compliant)

**MXZ-3D54VA MXZ-3D54VA2 MXZ-3D68VA MXZ-4D72VA**

## 1-13. OUTDOOR UNIT FUNCTIONAL PARTS AND ELECTRICAL PARTS

No.	RoHS	Part No.	Part Name	Symbol In Wiring Diagram	Q'ty/unit																								Remarks
					MXZ-																								
					3D54VA -						3D54VA2 -						3D68VA -						4D72VA -						
E1	E2	E3	ER2	ER3	ET2	ET3	E1	E2	E3	ER2	ER3	ET2	ET3	E1	E2	E3	ER2	ER3	ET2	ET3	E1	E2	E3	ER2	ER3	ET2	ET3		
1	G	E12 851 501	PROPELLER FAN		1	1	1	1	1	1	1	1	1	1	1	1	1	1	1	1	1	1	1	1	1	1			
2	G	E12 J69 301	OUTDOOR FAN MOTOR	MF	1	1	1	1	1	1	1	1	1	1	1	1	1	1	1	1	1	1	1	1	1	1	SIC-71FW-F764-1		
3	G	E12 J69 440	OUTDOOR POWER P.C. BOARD		1	1	1	1	1	1	1	1	1	1	1	1	1	1	1	1	1	1	1	1	1	1	Including heat sink and RT64		
4	G	E12 N50 450	OUTDOOR CONTROL P.C. BOARD		1	1		1	1																				
		E12 R38 450	OUTDOOR CONTROL P.C. BOARD				1	1	1																				
		E12 N52 450	OUTDOOR CONTROL P.C. BOARD								1	1		1	1														
		E12 R41 450	OUTDOOR CONTROL P.C. BOARD										1	1	1														
		E12 N54 450	OUTDOOR CONTROL P.C. BOARD																	1	1		1	1					
		E12 R44 450	OUTDOOR CONTROL P.C. BOARD																		1	1		1	1				
5	G	E12 J69 444	NOISE FILTER P.C. BOARD		1	1	1	1	1	1	1	1	1	1	1	1	1	1	1	1	1	1	1	1	1	1			
6	G	E12 C92 375	TERMINAL BLOCK	TB2~5	3	3	3	3	3	3	3	3	3	3	3	3	3	3	3	3	3	3	3	3	3	Indoor unit connecting			
7	G	E12 G07 374	TERMINAL BLOCK	TB1	1	1	1	1	1	1	1	1	1	1	1	1	1	1	1	1	1	1	1	1	1	Power supply			
8	G	E12 938 337	REACTOR	L	1	1	1	1	1	1	1	1	1	1	1	1	1	1	1	1	1	1	1	1	1	20A 600μH			
9	G	E12 J69 490	R.V. COIL	21S4	1	1	1	1	1	1	1	1	1	1	1	1	1	1	1	1	1	1	1	1	1				
10	G	E12 J69 308	THERMISTOR SET	RT61,62,68	1	1	1	1	1	1	1	1	1	1	1	1	1	1	1	1	1	1	1	1	1	DEFROST, DISCHARGE, OUTDOOR HEAT EXCHANGER			
11	G	E12 J69 309	AMBIENT TEMPERATURE THERMISTOR	RT65	1	1	1	1	1	1	1	1	1	1	1	1	1	1	1	1	1	1	1	1	1				

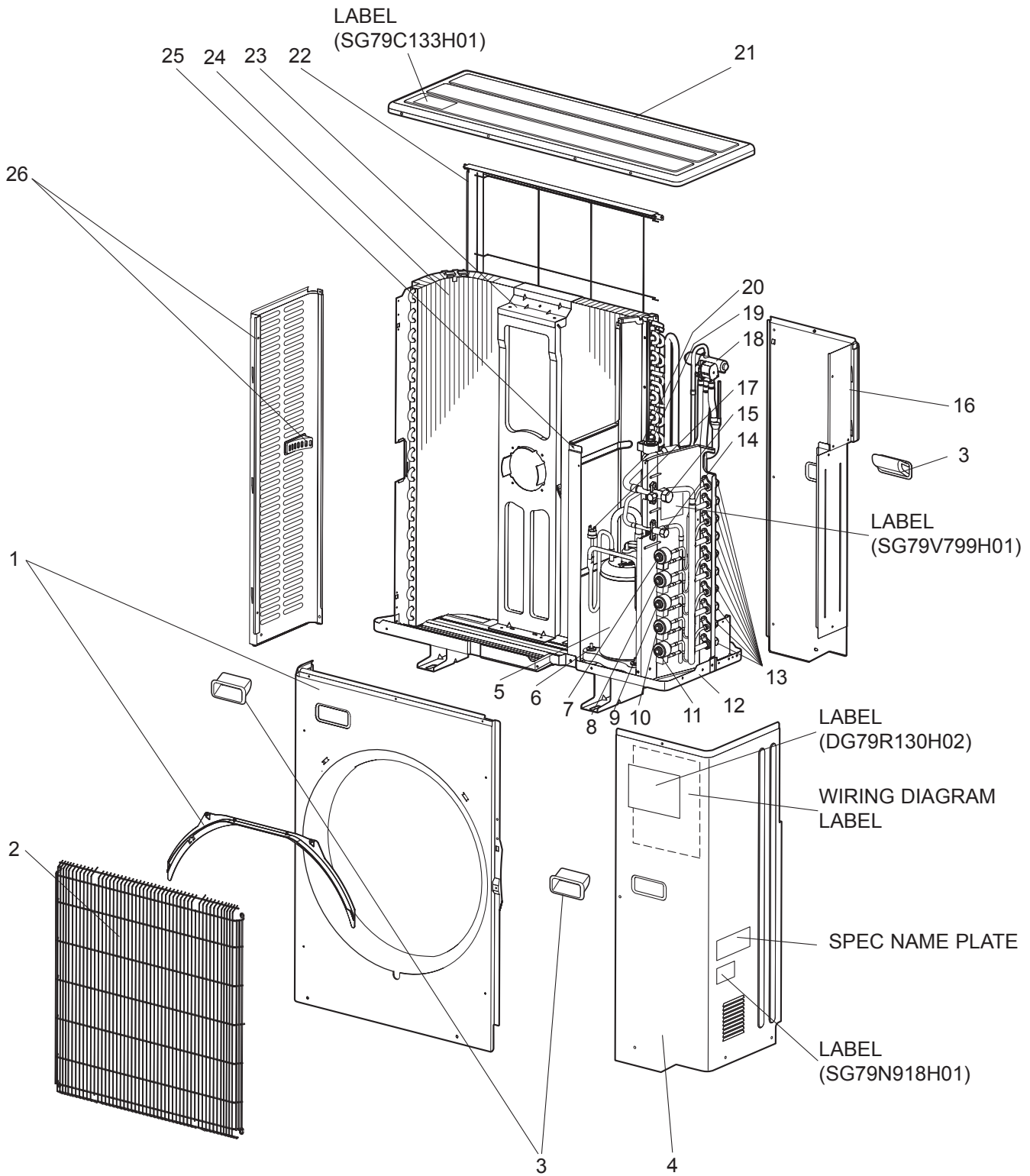
## 1-14. ACCESSORY

No.	RoHS	Part No.	Part Name	Symbol In Wiring Diagram	Q'ty/unit																								Remarks
					MXZ-																								
					3D54VA -						3D54VA2 -						3D68VA -						4D72VA -						
E1	E2	E3	ER2	ER3	ET2	ET3	E1	E2	E3	ER2	ER3	ET2	ET3	E1	E2	E3	ER2	ER3	ET2	ET3	E1	E2	E3	ER2	ER3	ET2	ET3		
12	G	E12 817 704	DRAIN SOCKET		1	1	1	1	1	1	1	1	1	1	1	1	1	1	1	1	1	1	1	1	1				
13	G	E12 444 705	DRAIN CAP		2	2	2	2	2	2	2	2	2	2	2	2	2	2	2	2	2	2	2	2	2				

# RoHS PARTS LIST

MXZ-4D83VA MXZ-5D102VA

## 1-15. OUTDOOR UNIT STRUCTURAL PARTS AND FUNCTIONAL PARTS



# RoHS PARTS LIST

## MXZ-4D83VA MXZ-5D102VA

### 1-15. OUTDOOR UNIT STRUCTURAL PARTS AND FUNCTIONAL PARTS

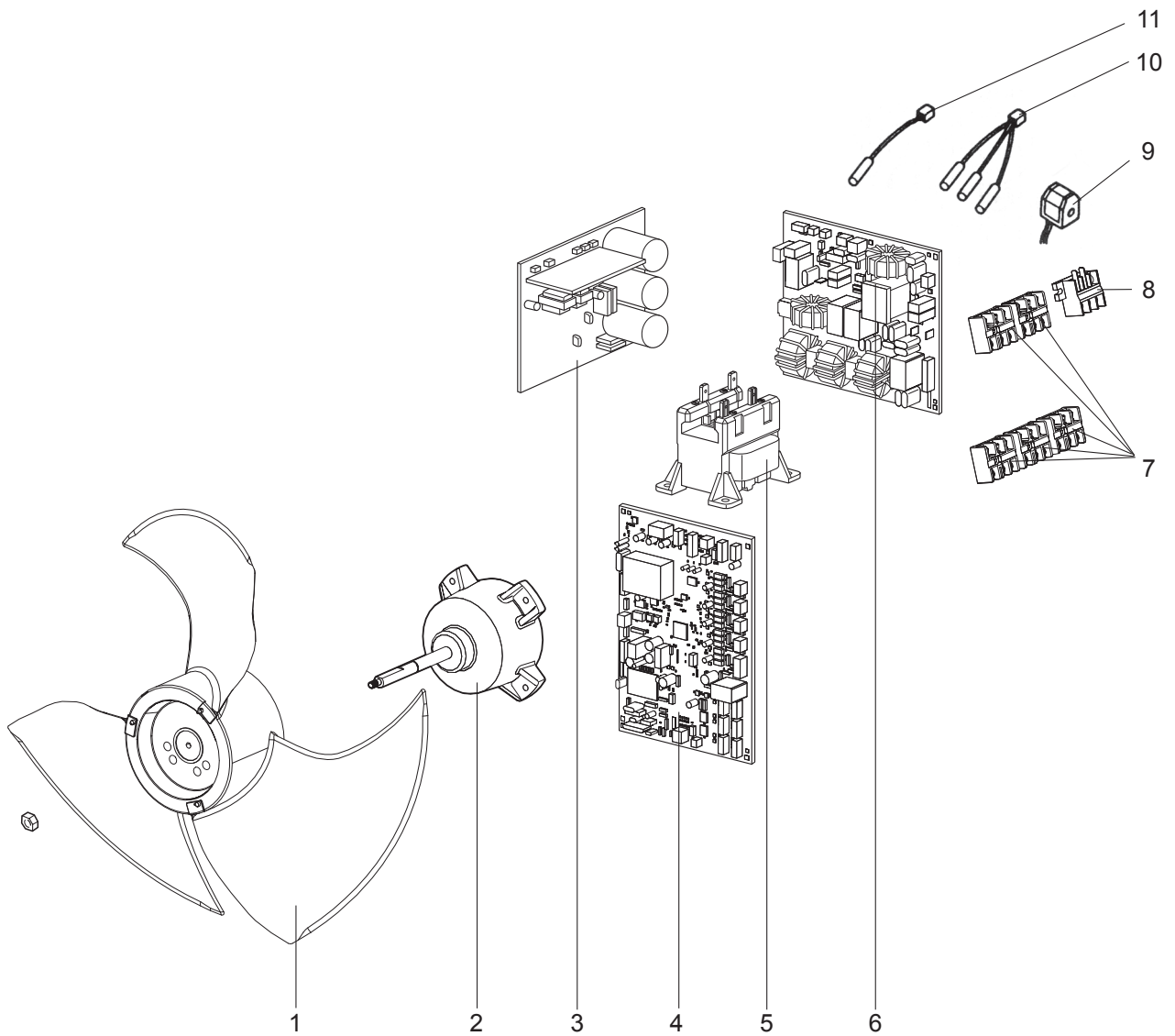
Part numbers that are circled are not shown in the illustration.

No.	RoHS	Part No.	Part Name	Symbol In Wiring Diagram	Q'ty/unit										Remarks		
					MXZ-												
					4D83VA -					5D102VA -							
E1	E2	ER1	ER2	ET2	E1	E2	ER1	ER2	ET2								
1	G	M21 EAA 232	FRONT PANEL		1	1	1	1	1	1	1	1	1	1	1	1	Including grille roof
2	G	M21 EA5 521	GRILLE		1	1	1	1	1	1	1	1	1	1	1		
3	G	M21 0A2 027	HANDLE ASSEMBLY		3	3	3	3	3	3	3	3	3	3	3		
4	G	M21 EA1 245	SERVICE PANEL		1	1	1	1	1	1	1	1	1	1	1	1	Without LABEL
5	G	T92 505 801	COMPRESSOR	MC	1	1	1	1	1	1	1	1	1	1	1	1	TNB220FMCH
6	G	M21 L2V 505	COMPRESSOR RUBBER SET		3	3	3	3	3	3	3	3	3	3	3	3	3RUBBERS SET
7	G	M21 L2V 401	EXPANSION VALVE	LEV E						1	1	1	1	1	1	E room	
		M21 9T4 655	LEV COIL							1	1	1	1	1			
8	G	M21 L2V 401	EXPANSION VALVE	LEV D	1	1	1	1	1	1	1	1	1	1	1	D room	
		M21 9T4 654	LEV COIL		1	1	1	1	1	1	1	1	1	1			
9	G	M21 L2V 401	EXPANSION VALVE	LEV C	1	1	1	1	1	1	1	1	1	1	1	C room	
		M21 9T4 653	LEV COIL		1	1	1	1	1	1	1	1	1	1			
10	G	M21 L2V 401	EXPANSION VALVE	LEV B	1	1	1	1	1	1	1	1	1	1	1	B room	
		M21 9T4 652	LEV COIL		1	1	1	1	1	1	1	1	1	1			
11	G	M21 L2V 401	EXPANSION VALVE	LEV A	1	1	1	1	1	1	1	1	1	1	1	A room	
		M21 9T4 651	LEV COIL		1	1	1	1	1	1	1	1	1	1			
12	G	M21 EA5 290	BASE ASSEMBLY		1	1	1	1	1	1	1	1	1	1	1		
13	G	M21 0A2 644	UNION		1	1	1	1	1	1	1	1	1	1	1	1	Ø12.7, Ø9.52, Ø6.35 SET
14	G	M21 4N9 668	STOP VALVE (LIQUID) 3/8		1	1	1	1	1	1	1	1	1	1	1	1	Ø9.52
15	G	M21 4N0 667	STOP VALVE (GAS) 5/8		1	1	1	1	1	1	1	1	1	1	1	1	Ø15.88
16	G	M21 EA0 248	REAR PANEL		1	1	1	1	1	1	1	1	1	1	1	1	
17	G	M21 L2V 646	HIGH PRESSURE SWITCH	HPS	1	1	1	1	1	1	1	1	1	1	1	1	4.8 MPa (48.9 kg/cm <sup>2</sup> )
18	G	M21 L2V 642	4-WAY VALVE		1	1	1	1	1	1	1	1	1	1	1	1	
19	G	M21 L2V 402	EXPANSION VALVE		1	1	1	1	1							F	
		M21 0A2 402	EXPANSION VALVE							1	1	1	1	1			
20	G	M21 9T6 651	LEV COIL	LEV F	1	1	1	1	1	1	1	1	1	1	1	1	
21	G	M21 EA1 297	TOP PANEL		1	1	1	1	1	1	1	1	1	1	1	1	Without LABEL
22	G	M21 EA1 523	REAR GUARD		1	1	1	1	1	1	1	1	1	1	1	1	
23	G	M21 6K8 515	MOTOR SUPPORT		1	1	1	1	1	1	1	1	1	1	1	1	
24	G	M21 EBE 630	OUTDOOR HEAT EXCHANGER		1	1	1	1	1	1	1	1	1	1	1	1	
25	G	M21 0A0 293	SEPARATOR		1	1	1	1	1	1	1	1	1	1	1	1	
26	G	M21 EA0 249	SIDE PANEL		1	1	1	1	1	1	1	1	1	1	1	1	Including handle
27	G	M21 EAA 959	POWER RECEIVER		1	1	1	1	1	1	1	1	1	1	1	1	
28	G	M21 0A2 937	CAPILLARY TUBE		2	2	2	2	2	2	2	2	2	2	2	2	Ø3.0 × Ø2.0 × 300
29	G	M21 0A2 936	CAPILLARY TUBE		4	4	4	4	4	5	5	5	5	5	5	5	Ø4.0 × Ø2.8 × 100
30	G	M21 L2V 938	CAPILLARY TUBE		1	1	1	1	1	1	1	1	1	1	1	1	Ø2.5 × Ø0.6 × 1000
31	G	M21 L2V 656	OIL SEPARATOR		1	1	1	1	1	1	1	1	1	1	1	1	

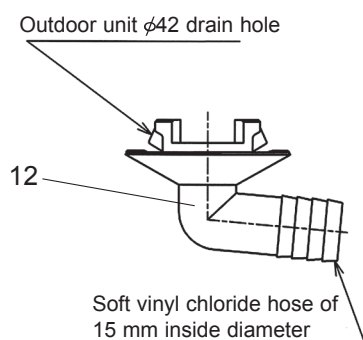
# RoHS PARTS LIST (RoHS compliant)

MXZ-4D83VA MXZ-5D102VA

## 1-16. OUTDOOR UNIT FUNCTIONAL PARTS AND ELECTRICAL PARTS



## 1-17. ACCESSORY





# RoHS PARTS LIST (RoHS compliant)

**MXZ-4D83VA MXZ-5D102VA**

## 1-16. OUTDOOR UNIT FUNCTIONAL PARTS AND ELECTRICAL PARTS

No.	RoHS	Part No.	Part Name	Symbol In Wiring Diagram	Q'ty/unit										Remarks	
					MXZ-											
					4D83VA -					5D102VA -						
					E1	E2	ER1	ER2	ET2	E1	E2	ER1	ER2	ET2		
1	G	M21 EA0 501	PROPELLER FAN		1	1	1	1	1	1	1	1	1	1	1	
2	G	M21 EA5 301	OUTDOOR FAN MOTOR	MF	1	1	1	1	1	1	1	1	1	1	1	RC0J60- □□
3	G	M21 EA3 440	OUTDOOR POWER P.C. BOARD		1	1	1	1	1	1	1	1	1	1	1	Including heat sink and RT64
4	G	T2W EKW 451	OUTDOOR CONTROL P.C. BOARD		1		1									
		T2W ERR 451				1		1	1							
		T2W ERS 451							1	1	1	1	1			
5	G	M21 9T7 337	REACTOR	L	1	1	1	1	1	1	1	1	1	1	1	20A 600μH
6	G	M21 9T5 424	NOISE FILTER P.C. BOARD		1	1	1	1	1	1	1	1	1	1	1	
7	G	T2W 0A2 376	TERMINAL BLOCK	TB2~6	4	4	4	4	4	5	5	5	5	5	5	Indoor unit connecting
8	G	T2W 9T4 377	TERMINAL BLOCK	TB1	1	1	1	1	1	1	1	1	1	1	1	Power supply
9	G	T2W L2V 398	R.V. COIL	21S4	1	1	1	1	1	1	1	1	1	1	1	
10	G	M21 L2V 308	THERMISTOR SET	RT61,62,68	1	1	1	1	1	1	1	1	1	1	1	DEFROST, DISCHARGE, OUTDOOR HEAT EXCHANGER
11	G	M21 0A2 309	AMBIENT TEMPERATURE THERMISTOR	RT65	1	1	1	1	1	1	1	1	1	1	1	

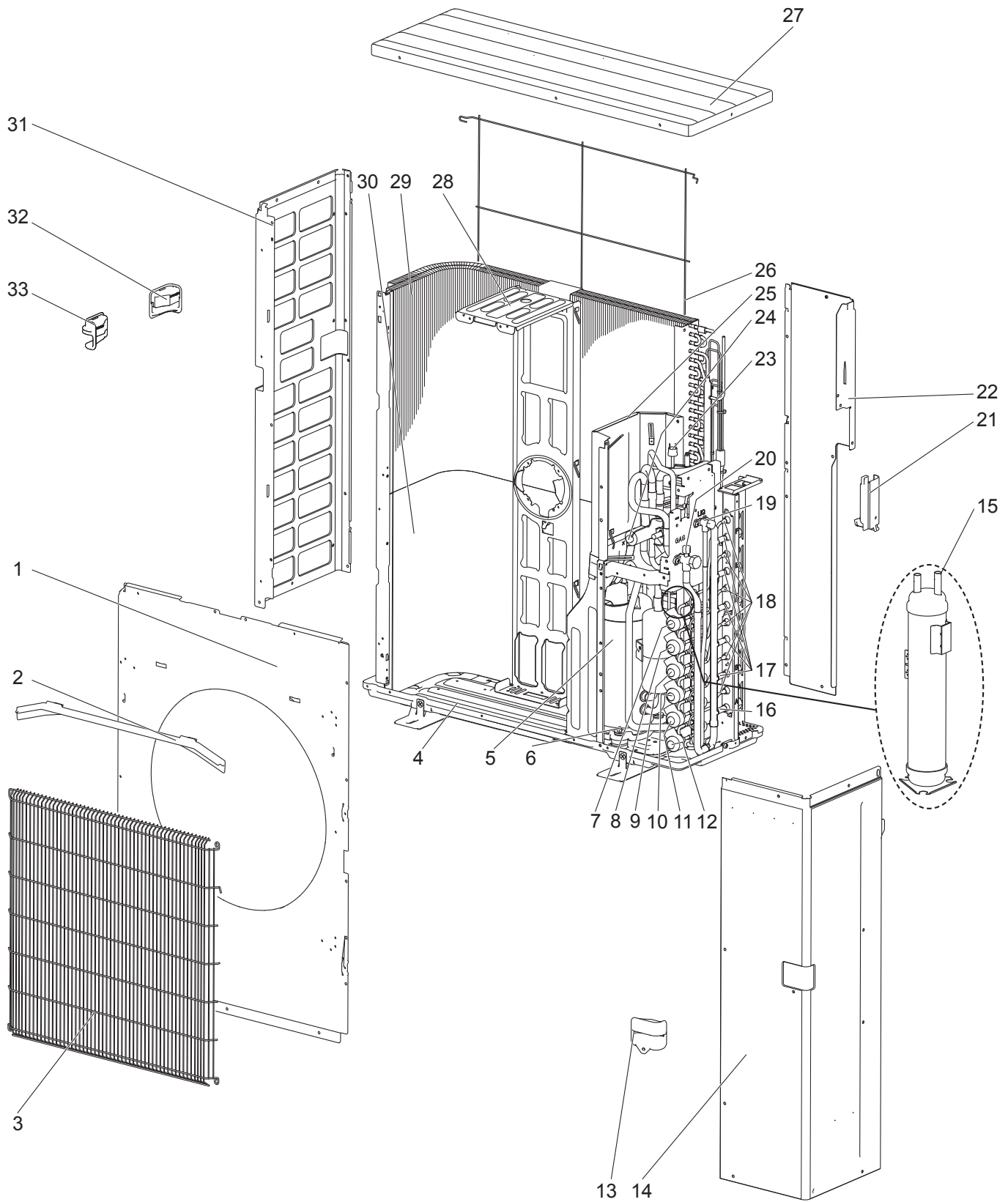
## 1-17. ACCESSORY

No.	RoHS	Part No.	Part Name	Symbol In Wiring Diagram	Q'ty/unit										Remarks	
					MXZ-											
					4D83VA -					5D102VA -						
					E1	E2	ER1	ER2	ET2	E1	E2	ER1	ER2	ET2		
12	G	M21 8K9 709	DRAIN SOCKET		1	1	1	1	1	1	1	1	1	1	1	

# RoHS PARTS LIST (RoHS compliant)

MXZ-6D122VA MXZ-6D122VA2

## 1-18. OUTDOOR UNIT STRUCTURAL PARTS AND FUNCTIONAL PARTS



# RoHS PARTS LIST (RoHS compliant)

## MXZ-6D122VA MXZ-6D122VA2

### 1-18. OUTDOOR UNIT STRUCTURAL PARTS AND FUNCTIONAL PARTS

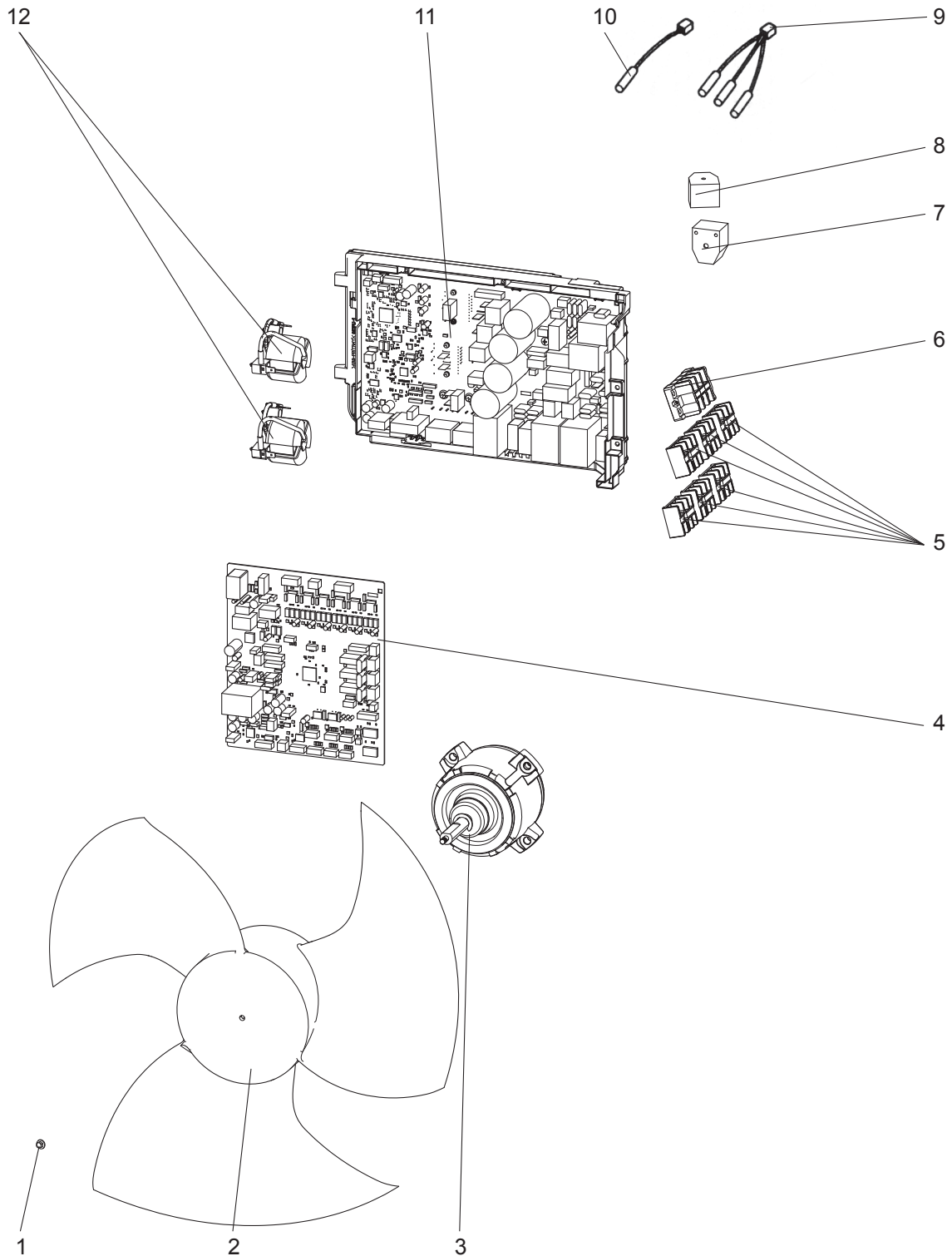
Part numbers that are circled are not shown in the illustration.

No.	RoHS	Part No.	Part Name	Symbol In Wiring Diagram	Q'ty/unit									Remarks	
					MXZ-										
					6D122VA-						6D122VA2-				
					E1	E2	ER1	ER2	ET1	ET2	E1	ET1	ER1		
1	G	E12 N99 232	FRONT PANEL		1	1	1	1	1	1	1	1	1	1	
2	G	E17 A15 531	ICE GUARD		1	1	1	1	1	1	1	1	1	1	
3	G	E12 R55 521	GRILLE		1	1	1	1	1	1	1	1	1	1	
4	G	E12 N99 290	BASE ASSEMBLY		1	1	1	1	1	1	1	1	1	1	
5	G	E12 N99 900	COMPRESSOR	MC	1	1	1	1	1	1	1	1	1	1	MNB33FBTMC-L
6	G	E12 267 506	COMPRESSOR RUBBER SET		3	3	3	3	3	3	3	3	3	3	3 RUBBERS SET
7	G	E12 N99 640	EXPANSION VALVE		1	1	1	1	1	1	1	1	1	1	F room
		E12 R55 493	LEV COIL	LEV F	1	1	1	1	1	1	1	1	1	1	
8	G	E12 N99 640	EXPANSION VALVE		1	1	1	1	1	1	1	1	1	1	E room
		E12 P64 493	LEV COIL	LEV E	1	1	1	1	1	1	1	1	1	1	
9	G	E12 N99 640	EXPANSION VALVE		1	1	1	1	1	1	1	1	1	1	D room
		E12 P63 493	LEV COIL	LEV D	1	1	1	1	1	1	1	1	1	1	
10	G	E12 N99 640	EXPANSION VALVE		1	1	1	1	1	1	1	1	1	1	C room
		E12 P02 493	LEV COIL	LEV C	1	1	1	1	1	1	1	1	1	1	
11	G	E12 N99 640	EXPANSION VALVE		1	1	1	1	1	1	1	1	1	1	B room
		E12 P01 493	LEV COIL	LEV B	1	1	1	1	1	1	1	1	1	1	
12	G	E12 N99 640	EXPANSION VALVE		1	1	1	1	1	1	1	1	1	1	A room
		E12 N99 493	LEV COIL	LEV A	1	1	1	1	1	1	1	1	1	1	
13	G	E12 P01 009	HANDLE		1	1	1	1	1	1	1	1	1	1	
14	G	E12 N99 245	SERVICE PANEL		1	1	1	1	1	1	1	1	1	1	Without LABEL
15	G	E12 N99 932	ACCUMULATOR		1	1	1	1	1	1	1	1	1	1	
16	G	E12 D37 666	UNION (GAS)		1	1	1	1	1	1	1	1	1	1	Ø12.7, A room
17	G	E12 D36 666	UNION (GAS)		5	5	5	5	5	5	5	5	5	5	Ø9.52, B, C, D, E, F room
18	G	E12 D36 667	UNION (LIQUID)		6	6	6	6	6	6	6	6	6	6	Ø6.35, A, B, C, D, E, F room
19	G	E12 N99 662	STOP VALVE (LIQUID)		1	1	1	1	1	1	1	1	1	1	Ø9.52
20	G	E12 R55 661	STOP VALVE (GAS)		1	1	1	1	1	1	1	1	1	1	Ø15.88
21	G	E12 N99 009	HANDLE (BACK)		1	1	1	1	1	1	1	1	1	1	
22	G	E12 R55 233	BACK PANEL		1	1	1	1	1	1	1	1	1	1	
23	G	E12 R24 646	HIGH PRESSURE SWITCH	HPS	1	1	1	1	1	1	1	1	1	1	4.41 MPa
24	G	E12 R55 961	4-WAY VALVE		1	1	1	1	1	1	1	1	1	1	
25	G	E12 N99 293	SEPARATOR		1	1	1	1	1	1	1	1	1	1	
26	G	E12 N99 523	REAR GUARD		1	1	1	1	1	1	1	1	1	1	
27	G	E12 N99 297	TOP PANEL		1	1	1	1	1	1					
		E12 18B 297								1	1	1			
28	G	E12 P64 515	MOTOR SUPPORT		1	1	1	1	1	1	1	1	1	1	
29	G	E12 N99 630	OUTDOOR HEAT EXCHANGER (TOP)		1	1	1	1	1	1	1	1	1	1	Including capillary tubes
30	G	E12 P01 630	OUTDOOR HEAT EXCHANGER (UNDER)		1	1	1	1	1	1	1	1	1	1	Including capillary tubes
31	G	E12 N99 086	SIDE PANEL-L		1	1	1	1	1	1	1	1	1	1	
32	G	E17 943 009	HANDLE (REAR)		1	1	1	1	1	1	1	1	1	1	
33	G	E17 942 009	HANDLE (FRONT)		1	1	1	1	1	1	1	1	1	1	
34	G	E12 R55 492	2-WAY SOLENOID VALVE		1	1	1	1	1	1	1	1	1	1	
35	G	E12 N99 936	CAPILLARY TUBE		2	2	2	2	2	2	2	2	2	2	Ø4.0 x Ø3.0 x 200
36	G	E12 939 936	CAPILLARY TUBE		6	6	6	6	6	6	6	6	6	6	Ø4.0 x Ø2.8 x 100
37	G	E12 938 936	CAPILLARY TUBE		1	1	1	1	1	1	1	1	1	1	Ø2.5 x Ø0.6 x 1000

# RoHS PARTS LIST (RoHS compliant)

MXZ-6D122VA MXZ-6D122VA2

## 1-19. OUTDOOR UNIT FUNCTIONAL PARTS AND ELECTRICAL PARTS



## 1-20. ACCESSORY



# RoHS PARTS LIST (RoHS compliant)

**MXZ-6D122VA MXZ-6D122VA2**

## 1-19. OUTDOOR UNIT FUNCTIONAL PARTS AND ELECTRICAL PARTS

No.	RoHS	Part No.	Part Name	Symbol In Wiring Diagram	Q'ty/unit									Remarks
					MXZ-									
					6D122VA						6D122VA2			
					E1	E2	ER1	ER2	ET1	ET2	E1	ET1	ER1	
1	G	E17 A15 508	PROPELLER FAN NUT		1	1	1	1	1	1	1	1	1	
2	G	E12 N99 501	PROPELLER FAN		1	1	1	1	1	1	1	1	1	
3	G	E12 Y45 301	OUTDOOR FAN MOTOR	MF	1	1	1	1	1	1	1	1	1	SIC-81FW-D888-□
4	G	E12 R55 450	OUTDOOR CONTROL P.C. BOARD		1		1		1					
					1		1		1					
										1	1	1		
5	G	E12 C92 375	TERMINAL BLOCK	TB2,3,4,5,6,7	6	6	6	6	6	6	6	6	6	Indoor unit connecting
6	G	E12 R55 374	TERMINAL BLOCK	TB1	1	1	1	1	1	1	1	1	1	Power supply
7	G	E12 R55 490	R.V. COIL	21S4	1	1	1	1	1	1	1	1	1	
8	G	E12 R56 490	2-WAY VALVE SOLENOID COIL	21S2	1	1	1	1	1	1	1	1	1	
9	G	E12 N99 308	THERMISTOR SET	RT61, 62,68	1		1		1					DEFROST, DISCHARGE, OUTDOOR HEAT EXCHANGER
					1		1		1	1	1	1		
10	G	E12 N99 309	AMBIENT TEMPERATURE THERMISTOR	RT65	1		1		1					
					1		1		1	1	1	1		
11	G	E12 R55 440	OUTDOOR POWER P.C. BOARD		1	1	1	1	1	1				Including heat sink and RT64
										1	1	1		
12	G	E12 N99 337	REACTOR	L1,L2	2	2	2	2	2	2	2	2	2	30A 750μH

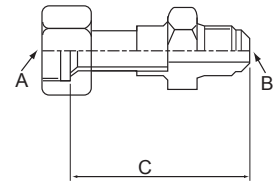
## 1-20. ACCESSORY

No.	RoHS	Part No.	Part Name	Symbol In Wiring Diagram	Q'ty/unit									Remarks
					MXZ-									
					6D122VA						6D122VA2			
					E1	E2	ER1	ER2	ET1	ET2	E1	ET1	ER1	
13	G	E12 817 704	DRAIN SOCKET		1	1	1	1	1	1	1	1	1	
14	G	E12 444 705	DRAIN CAP		5	5	5	5	5	5	5	5	5	

## 2-1. DIFFERENT-DIAMETER PIPE

Applied unit	Model name	Connected pipes diameter	Diameter A	Diameter B	Length C
MXZ-2D42VA MXZ-2D42VA2 MXZ-2D53VA MXZ-2D53VA2 MXZ-2D53VAH MXZ-2D53VAH2	MAC-A454JP-E	$\phi 9.52$ — $\phi 12.7$ (3/8) (1/2)	$\phi 9.52$ (3/8)	$\phi 12.7$ (1/2)	69
MXZ-2D53VA MXZ-2D53VA2 MXZ-2D53VAH MXZ-2D53VAH2	MAC-A455JP-E	$\phi 12.7$ — $\phi 9.52$ (1/2) (3/8)	$\phi 12.7$ (1/2)	$\phi 9.52$ (3/8)	65
MXZ-3D54VA MXZ-3D68VA MXZ-4D72VA MXZ-4D83VA	MAC-A456JP-E	$\phi 12.7$ — $\phi 15.88$ (1/2) (5/8)	$\phi 12.7$ (1/2)	$\phi 15.88$ (5/8)	66.5
MXZ-5D102VA MXZ-6D122VA MXZ-6D122VA2	PAC-493PI	$\phi 6.35$ — $\phi 9.52$ (1/4) (3/8)	$\phi 6.35$ (1/4)	$\phi 9.52$ (3/8)	60.5
	PAC-SG76RJ-E	$\phi 9.52$ — $\phi 15.88$ (3/8) (5/8)	$\phi 9.52$ (3/8)	$\phi 15.88$ (5/8)	101.5

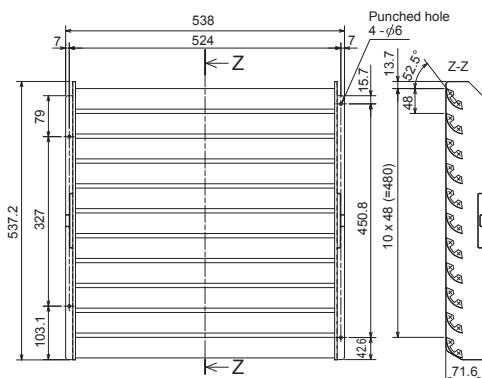
Unit: mm



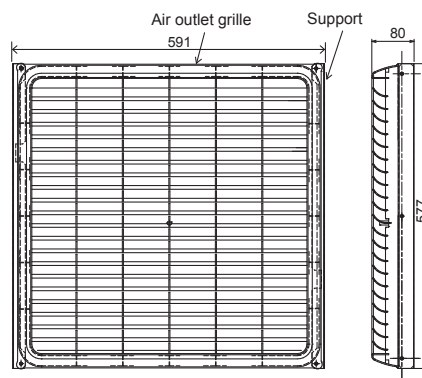
## 2-2. OUTLET GUIDE

Changes air discharge direction.

Applied unit	Model name	Model code
MXZ-2D33VA MXZ-2D40VA MXZ-2D42VA MXZ-2D42VA2 MXZ-2D53VA MXZ-2D53VA2 MXZ-2D53VAH MXZ-2D53VAH2	MAC-889SG	506-889
MXZ-3D54VA MXZ-3D54VA2 MXZ-3D68VA MXZ-4D72VA MXZ-4D83VA MXZ-5D102VA	MAC-856SG	51H-856



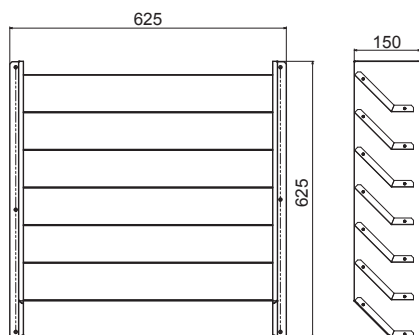
MAC-889SG



MAC-856SG

Unit: mm

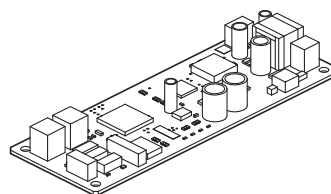
Applied unit	Model name	Model code
<b>MXZ-6D122VA</b> <b>MXZ-6D122VA2</b>	PAC-SH96SG-E	7H2N19



PAC-SH96SG-E

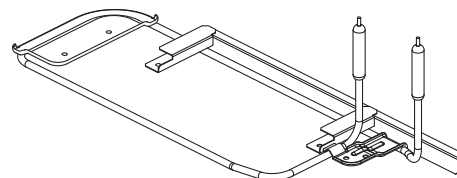
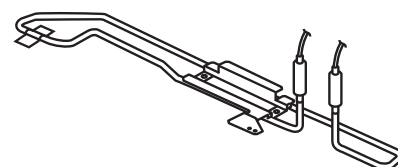
### 2-3. M-NET ADAPTER

Applied unit	Model name	Model code
<b>MXZ-6D122VA</b> <b>MXZ-6D122VA2</b>	PAC-IF01MNT-E	7H2N34



### 2-4. BASE HEATER

Applied unit	Model name	Model code
<b>MXZ-2D33VA-E4/ET4/ER4</b> <b>MXZ-2D42VA2-E4/ET4/ER4</b> <b>MXZ-2D53VA2-E4/ET4/ER4</b>	MAC-643BH-E	450912
<b>MXZ-6D122VA</b> <b>MXZ-6D122VA2</b>	PAC-645BH-E	7H2590



### Components

①	Base heater	1	④	Base heater support (2)	1	⑦	Cable tie	2
②	Heater guard	1	⑤	Clamp	1	⑧	Fastener	2
③	Base heater support (1)	1	⑥	Screw	8	⑨	Spec label	1

# MITSUBISHI ELECTRIC CORPORATION

HEAD OFFICE: TOKYO BUILDING, 2-7-3, MARUNOUCHI, CHIYODA-KU, TOKYO 100-8310, JAPAN

© Copyright 2012 MITSUBISHI ELECTRIC CORPORATION

Issued: Mar. 2018. No.OBB626 REVISED EDITION-R

Issued: Jan. 2018. No.OBB626 REVISED EDITION-Q

Issued: Oct. 2017. No.OBB626 REVISED EDITION-P

Issued: Sep. 2017. No.OBB626 REVISED EDITION-N

Issued: Jul. 2017. No.OBB626 REVISED EDITION-M

Issued: Feb. 2017. No.OBB626 REVISED EDITION-L

Issued: Sep. 2016. No.OBB626 REVISED EDITION-K

Issued: Mar. 2016. No.OBB626 REVISED EDITION-J

Issued: Dec. 2015. No.OBB626 REVISED EDITION-H

Issued: Apr. 2015. No.OBB626 REVISED EDITION-G

Issued: Jan. 2015. No.OBB626 REVISED EDITION-F

Issued: Aug. 2014. No.OBB626 REVISED EDITION-E

Issued: Jan. 2014. No.OBB626 REVISED EDITION-D

Issued: Oct. 2013. No.OBB626 REVISED EDITION-C

Issued: Sep. 2013. No.OBB626 REVISED EDITION-B

Issued: Dec. 2012. No.OBB626 REVISED EDITION-A

Published: Nov. 2012. No.OBB626

Made in Japan

Specifications are subject to change without notice.