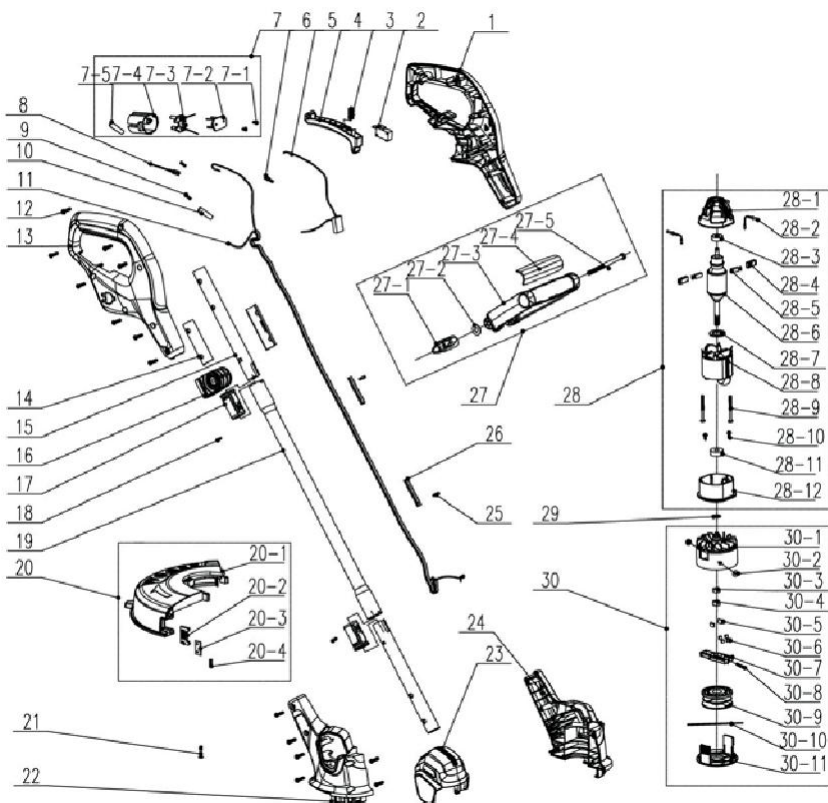


EXPLODED VIEW



POS	REFERENCE	DESCRIPTION
1	8001-522601-0061510	Left Handle
2	8042-620101-0000010	Switch
3	8342-740201-0000000	Spring
4	8044-533701-0017010	Trigger

5	8416-000004-0000020	Capacitance
6	239-0008	Female Terminal
7	8440-531712-0000110	Plug Assy
8	8413-431802-0000020	Connection
9	239-0044	Copper Tape

POS	REFERENCE	DESCRIPTION
10	233-1004	Heat Shrinkable Tube
11	8413-522601-0000010	Spring Wire
12	8SJGB40-16D	Screw
13	8001-522602-0061510	Right Handle
14	8331-522602-0001710	Pipe Bushing
15	8061-522601-0000000	Connect Tube
16	8292-692203-0060710	Auxiliary Handle Holder
17	8063-522601-0017010	Connect Bushing
18	8SNAB30-12D	Screw
19	8061-522602-0000000	Connect Tube

20	8440-522603-0061510	Guard Assy
21	8206-522001-0000000	Screw
22	8006-522602-0055110	Right Housing
23	8024-522601-0055110	Top Cover
24	8006-522601-0055110	Left Housing
25	236-1001	Cable Tie
26	240-1003	Tube
27	8440-522602-0060710	Auxiliary Handle
28	8440-522604-0000010	Motor Assy
29	8321-625001-0000000	Gasket
30	199023000100	Cutting Head Assy