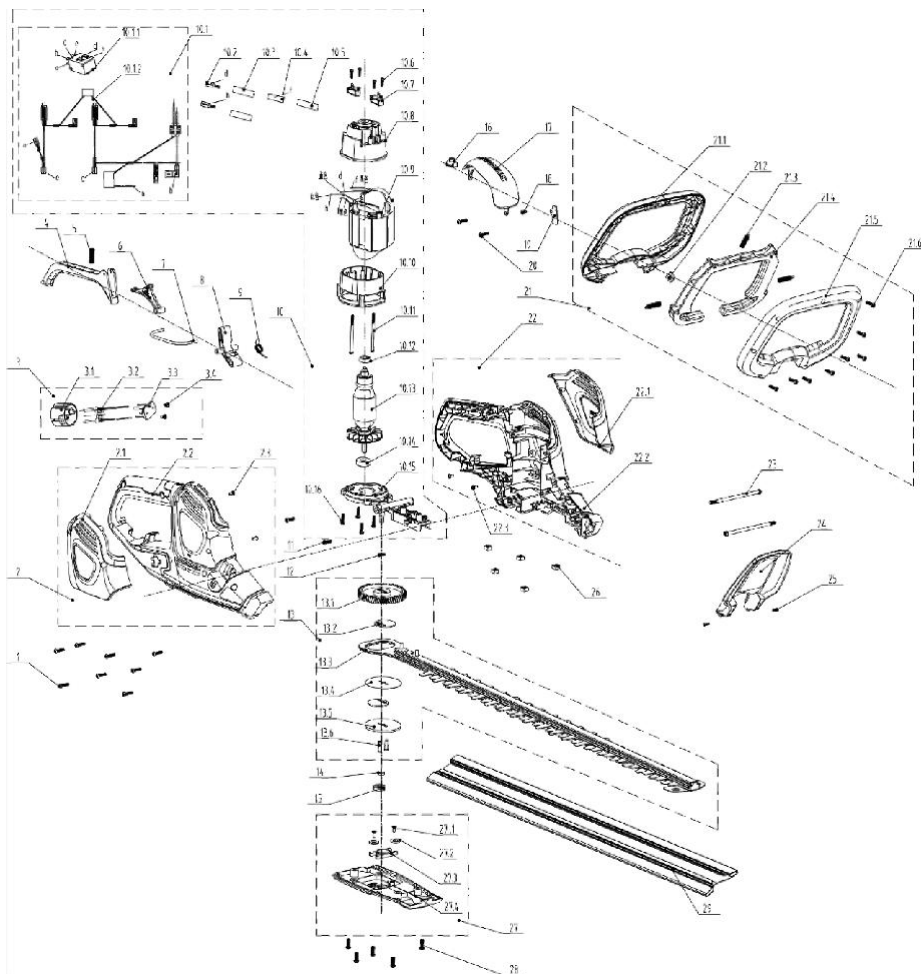


6.4 EXPLODED VIEW



POS	REFERENCE	DESCRIPTION			
			3	8440-531712-0000110	Plug Assy
1	8SJGB40-16D	Screw	4	8044-531801-0017010	Trigger
2	8440-531804-0061510	Right Housing Assy	5	8342-753502-0000000	Spring
2,1	8020-531802-0055110	Right Decorative Cover	6	8043-531801-0001710	Rotating Rod
2,2	8006-531802-0061510	Right Housing	7	8087-531802-0000000	Connecting Rod
2,3	8SNAB30-08D	Screw	8	8043-531701-0001710	Rotating Rod

POS	REFERENCE	DESCRIPTION
9	207010300008	Spring
10,1	199084000069	Switch Assy
10,6	8SNAB30-10D	Screw
10,7	207119900146	Carbon Brush
10	8440-531805-0000010	Motor Connection Assy
10,2	239-0008	Female Terminal
10,3	233-1005	Heat Shrinkable Tube
10,4	239-0044	Copper Tape
10,5	233-1004	Heat Shrinkable Tube
10,8	202031000746	Motor Holder
10,9	8405-531801-0000010	Stator
10,1	202031000579	Motor Holder
10,11	8SJAN40-65D	Screw
10,12	8BC-190706-ST	Bearing
10,13	8402-531801-0000010	Rotor
10,14	8BC-240907-ST	Bearing
10,15	8292-531803-0000000	Alu Holder
10,16	8SJGB40-16D	Screw
11	8SNAB40-18D	Screw
12	8202-530503-0000000	Gasket
13	A041021-006-00	Gear & Blade Assy
13,1	8123-531701-0100000	Gear
13,2	8124-531601-0000000	Gear
13,3	A041021-002-00	Blade Assy
13,4	8325-531601-0000000	Partition

13,5	8325-531602-0000000	Gasket
13,6	8086-531601-0100000	Pin
14	8202-531801-0000000	Gasket
15	8334-530901-0000000	Screw Sleeve
16	8024-531701-0000010	Light Cover
17	8020-531803-0017010	Top Cover
20	8SJGB40-25D	Screw
18	8SJGB40-14D	Screw
19	8186-531703-0000010	Plate
21	8440-531704-0060710	Auxiliary Handle Assy
21,1	202024002415	Auxiliary Handle Top
21,2	8207-531601-0000000	Nut
21,3	8342-531601-0000000	Spring
21,4	8044-531802-0017010	Trigger
21,5	8003-531802-0060710	Auxiliary Handle Bottom
21,6	8SJGB30-12D	Screw
23	8206-531601-0000000	Screw
22	8440-531803-0061510	Left Housing Assy
22,1	8020-531801-0055110	Left Decorative Cover
22,2	8006-531801-0061510	Left Housing
22,3	8SNAB30-08D	Screw
24	8024-531801-0060710	Baffle
25	8SEAB30-12D	Screw

POS	REFERENCE	DESCRIPTION
26	8207-531601-0000000	Nut
27	8440-531708-0060710	Bottom Cover Assy
27,1	8SJGB40-08D	Screw
27,2	8202-240102-0000000	Gasket

27,3	8301-534101-0001710	Bearing Holder
27,4	8020-531804-0060710	Bottom Cover
28	8SJGD05-16D	Screw
29	8331-534701-0000020	Blade Sheath