

PRELIMINARY
PRELIMINARY

REV	CHANGE DESCRIPTION	ZONE	ECN #	CHANGED BY	APPROVED BY	APV DATE	
56	679973004	I		TRIGGER SPRING \ DIA 0.45MM \ BLACKOXIDE	CL00128959		
55	545915001	I		BLOW MOLD\ 6" BAR SCABBARD\HDPE\090719	CL00100243		
54	900909001	0.005KG		MOBILITH AW GREASE	90090900100099	NOT SHOWN	
53	900120018	0.005KG		SOLDER WIRE	90012001800099	NOT SHOWN	
52	700008003	0.06MT		SHRINKABLE TUBE	CL00017171	NOT SHOWN	
51	660208104	2		ST SCREW	66020810400099		
50	660203087	II		ST SCREW, STEEL CH M3.0x12 PH T10	66020308700099		
49	548742001	I		PLASTIC\ LITTLE CAP FOR LOCKING KNOB \PA6-GF30	CL00120533		
48	545911001	I		PLASTIC\ BAR LOCKING BASE	CL00092360		
47	683183001	I		PIN FOR CHAIN TENSION	CL00096354		
46	545910001	I		PLASTIC\ BAR LOCKING KNOB\PA6-GF30	CL00096355		
45	545909003	I		PLASTIC\CHAIN ADJUSTMENT KNOB\PA6-GF30\GREEN	CL00129442		
44	545906001	I		PLASTIC\ SPROCKET COVER	CL00092359		
43	660382002	2		M SCREW,STEEL M3x5 FH TROX RECESS \ OWT 98449	66038200200099		
42	545916001	I		PLASTIC\ DRIVING GEAR FOR CHAIN TENSION	CL00098490		
41	656654001	I		FLAT WASHER,STEEL TH 7.5X15.5X1 mm	CL00098464		
40	644651001	I		SLIDER FOR CHAIN TENSION\090719	CL00090488		
39	644652001	I		FIXING PLATE FOR CHAIN TENSION\090719	CL00090401		
38	656655001	I		STEEL BUSHING\0.5MM	CL00098460		
37	663208001	I		M SCREW,STEEL TH M4.0X0.7 CH SLOT B	CL00098453		
36	319739004	I		6" BAR\0.325" PITCH\0.043" GAUGE\OREGON	CL00128613		
35	682737001	I		6" SAW CHAIN\ 0.325" PITCH\ 0.043" GAUGE\ OREGON	CL00126065		
34	661817001	I		ST SCREW	66181700100099		
33	690969003	I		WASHER FLAT 4.2X10X1 BLACK	CL00046330		
32	545913001	I		PLASTIC\ FRONT GUARD \6"090719	CL00098732		
31	636159001	I		E-RING	CL00003895		
30	635367003	I		CAP WASHER\0D26 MM	CL00119841		
29	662364001	I		ST SCREW,STEEL CH M4.0	CL00014032		
28	615619001	I		SPROCKET\6 TEETH L.P.0.325" PITCH	CL00108621		
27	683187001	I		TORSIONAL SPRING\F12\DF1.4	CL00097697		
26	545905001	I		PLASTIC\ RIGHT HOUSING	CL00111229		
25	663198001	I		M SCREW,STEEL TH M6.0X1 SOH B \ L=29MM ZN-PLATE	CL00090618		
24	281335049	I		RTERY MCU PLATFORM HIGH PERFORMANCE PCBA	CL00095169		
23	566436001	I		RUBBER BRUSHLESS HOUSING BADGE \ 095794	CL00090481		
22	742821001	I		MOTOR\18V-DC #600 \ NA 20000RPM 5A 400W OD35	CL00108798		
21	614668002	I		MOTOR PINION	CL00117900		
20	659366001	I		EXTERNAL TOOTHED FLAT WASHER	SL00028937		
19	614670002	I		POWDER METAL\RING GEAR	CL00111201		
18	614669002	4		PLANET GEAR	CL00111200		
17	680658003	4		NEEDLE BEARING	68065800300099		
16	614671002	I		POWDER METAL\CARRIER AND PINS	CL00117909		
15	680334055	2		PIN \FOR GEAR BOX \ F2.5MM L=10MM	CL00117894		
14	547318001	I		PLASTIC\GEAR BOX CASE	CL00111205		
13	682096001	2		BALL BEARING\WTOO ID\XODI6XW5MM	CL00017810		
12	615587001	I		SPIRAL BEVEL PINION	CL00108729		
11	770438001	I		WIRE 3173 AWG\4 \ RED \090717	CL00098718		
10	699120001	I		SAFETY TRIGGER SPRING	CL00065324		
9	300001064	I		CONTACT PLATE HOLDER ASS	30000106400099		
8	760630006	I		SWITCH, THROTTLE, UL & VDE\NC V592C.42V 25A \ 0	CL00067172		
7	545908001	I		PLASTIC\ LOCK OFF BUTTON	CL00092368		
6	623034001	I		OUTPUT SHAFT	CL00084033		
5	615588001	I		SPIRAL BEVEL GEAR\OUTPUT GEAR	CL00108740		
4	850041001	2		BEARING, RADIAL, IO X 22 X 6 - 6010	65004100100099		
3	545904001	I		PLASTIC\ LEFT HOUSING	CL00111228		
2	545907001	I		PLASTIC\ TRIGGER\PA6-GF30\090719	CL00092364		
1	566549001	I		RUBBER BADGE FOR RYOBI ONE+ HP LOGO ON THE SP	CL00096387		
ITEM	CN	ORA	PN	QTY	PART NAME	PLM ID	REMARK

Techtronic Industries Co. Ltd.

EU, RY18PSX15A \ RYOBI 18V BRUS

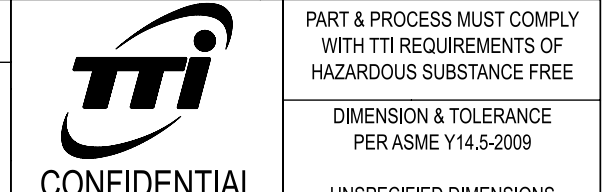
WEIGHT & TOLERANCE COLOR COLOR NAME, COLOR CHIP #

108719305C

PART NUMBERS

SCALE 1:1 SHEET 1 OF 3

REV A



CONFIDENTIAL

THIS DRAWING IS DESIGN AND DETAIL IS THE PROPERTY OF TECHTRONIC INDUSTRIES COMPANY LIMITED

UNLESS OTHERWISE SPECIFIED DIMENSIONS ARE IN MILLIMETERS

3RD ANGLE PROJECTION

PRINT & PROCESS MUST COMPLY WITH THE REQUIREMENTS OF HAZARDOUS SUBSTANCE FREE DIMENSIONAL TOLERANCE PER ASME Y14.5-2009 UNLESS OTHERWISE SPECIFIED DIMENSIONS ARE IN MILLIMETERS

