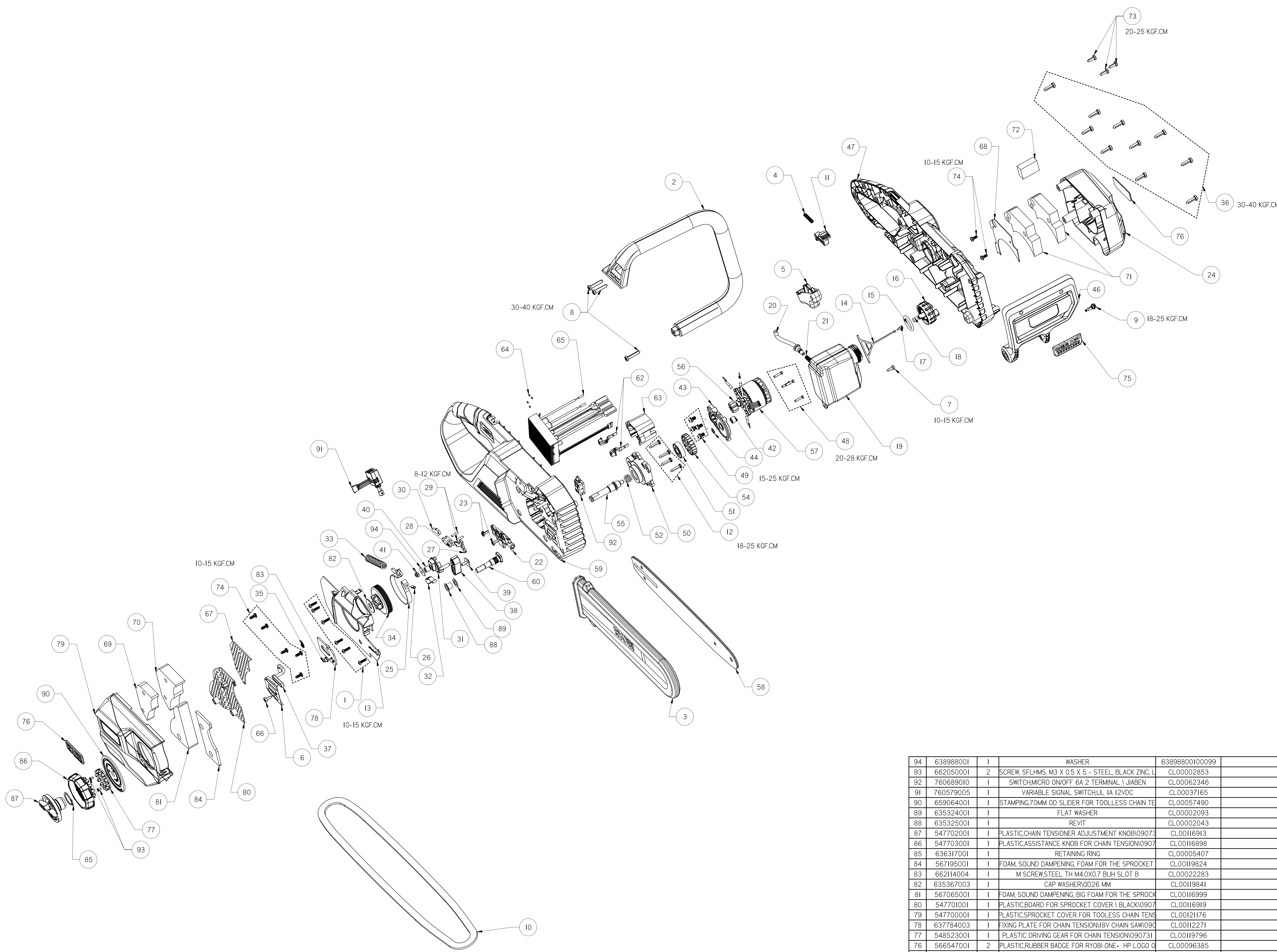


PRELIMINARY



ITEM	CN	ORA	PN	QTY	PART NAME	PLM ID	REMARK
70	567347001	I		1	FOAM, SOUND DAMPENING, SMALL FOAM-TWO FOR THE	CL00121210	
69	567346001	I		1	FOAM, SOUND DAMPENING, SMALL FOAM FOR THE SPR	CL00121211	
68	546264001	I		1	PLASTIC,COVER OF MOTOR COVER	CL00104848	
67	548912001	I		1	PLASTIC,SMALL COVER OF SPROCKET COVER\090731	CL00121188	
66	660608004	I		1	TAPTITE SCREW,STEEL CH M4.0X1.59 TH TORX T20 P	CL00021673	
65		I		1	RYOBI 18V BLDC HIGH PERFORMANCE PLATFORM PCB	CL00120132	
64	900120011	I		1	SOLDER WIRE \ FREE LEAD Dia1.2mm	90012001100099	
63	532132001	I		1	PLASTIC,TERMINAL HOLDER	CL00019188	
62	637807001	I		1	STAMPING COPPER TERMINAL FOR 18V CHAIN SAW	CL00019625	
61	901532001	I		1	M50085000	90153200100099	
60	660503004	I		1	BOLT	66050300400099	
59	544885002	I		1	PLASTIC, RIGHT HOUSING FOR 18V RYOBI BRUSHLESS	CL00084341	
58	312415003	I		1	1/2" BAR \ 0.325" PITCH 0.043" GAUGE \ OREGON WITH	CL00128090	
57	742274001	I		1	MOTOR,20V-DC OTHER	CL00018584	
56	615156001	I		1	POWDER METAL-PINION\090730	CL00084079	
55	622989001	I		1	OUTPUT SHAFT \OD10.0MM,IS45C\090758 CE VERSIO	CL00088022	
54	615155001	I		1	OUTPUT GEAR\090730	CL00084078	
53	900240011	I		1	GREASE	90024001100099	
52	694071001	I		1	CONE SPRING FOR OIL PUMP	CL00001347	
51	678129006	I		1	BALL BEARING 6001 LLH \ DOUBLE LIPS SEAL \ TRIMM	67812900600099	
50	644531001	I		1	DIE CASTING GEAR BOX \090730	CL00084846	
49	660502004	4		4	SCREW, PHMS, M5 X 0.8 X 9 - STEEL, BLACK ZINC, TL	CL00013444	
48	660211020	4		4	TAPTITE SCREW	66021102000099	
47	544886002	I		1	PLASTIC,LEFT HOUSING FOR 18V RYOBI BRUSHLESS C	CL00084366	
46	545120002	I		1	PLASTIC,FRONT GUARD\090758\ICE VERSION	CL00085152	
45	903052001	I		1	GREASE	CL00009013	
44	670914001	I		1	WASHER, M6	67091400100099	
43	644532001	I		1	GEAR CASTING SUPPORT \090730	CL00084847	
42	679978001	I		1	NEEDLE BEARING HK0608	67997800100099	
41	670682002	I		1	NUJT	67068200200099	
40	678602001	I		1	INSERT	67860200100099	
39	662199001	I		1	SCREW	CL00005829	
38	544893001	I		1	PLASTIC, BRAKE SWITCH CONNECTOR\090758	CL00083456	
37	563438001	I		1	OUTLET TUBE	CL00001066	
36	662051003	10		10	TAPTITE SCREW,STEEL CH #10-14 PH TORX T25 P DC	CL00022280	
35	636159001	I		1	E-RING	CL00003895	
34	615654001	I		1	0.325" PITCH SPROCKET WITH CLUTCH DRUM\6 TEET	CL00112971	
33	695772001	I		1	SPRING	CL00015323	
32	678061001	I		1	SPRING, HAND BRAKE TENSION	67806100100099	
31	531912001	I		1	PLASTIC, ROTATOR INSERT FOR GUARD	CL00018163	
30	637724001	I		1	BRAKE BAND GUIDE	CL00018768	
29	673771001	2		2	PIN FOR SAW BRAKE LINKS	CL00026435	
28	531902001	I		1	BRAKE BAND LINK	CL00015247	
27	637808001	I		1	HAND GUARD PIVOT	CL00019659	
26	671095001	I		1	PIN	67109500100099	
25	637612001	I		1	STAMPING BRAKE BAND	CL00015240	
24	544890001	I		1	MOTOR COVER	CL00083331	
23	660610001	2		2	SCREW, TORX PSTS, M4 X L41 X 9.5 - STEEL, BLACK P	66061000100099	
22	309514001	I		1	OIL PUMP ASM	30951400100099	
21	671090001	I		1	CONE SPRING	67109000100099	
20	563439001	I		1	OIL INPUT TUBE	CL00001326	
19	580973001	I		1	OIL TANK,BLOW MOULD	CL00083126	
18	900777001	I		1	FILTER, FUEL CAP	90077700100099	
17	560955001	I		1	PLASTIC,VALVE-DUCKBILL,FUEL CAP	56095500100099	
16	518757003	I		1	PLASTIC,OIL CAP,BLACK,JCB CS	51875700300099	
15	570434001	I		1	O-RING,FUEL CAP	57043400100099	
14	528876002	I		1	TANK CAP RETAINER	CL00010412	
13	544888002	I		1	PLASTIC,BRAKE BAND COVER\090758 CE	CL00084346	
12	661189003	4		4	ST SCREW, STEEL CH M4.0X18	66118900300099	
11	541725003	I		1	PLASTIC,LOCK OFF\PA6-GF30\BLACK\090586	CL00069402	
10	682728001	I		1	1/2" CHAIN, 0.325" PITCH 0.043" GAUGE \ OREGON	CL00126681	
9	662113001	I		1	SCREW, TORX PSTS, IO-14 X 14.2MM - STEEL, WHITE Z	CL00002845	
8	662053002	3		3	SCREW	CL00002875	
7	660608001	I		1	M4 SCREW	66060800100099	
6	674552001	I		1	STAMPING GUARD PLATE_GUARD BARI\090731	CL00112887	
5	542078001	I		1	PLASTIC,TRIGGER \ BLACK \090586	CL00064297	
4	694143001	I		1	SPRING	CL00001266	
3	580974002	I		1	BLOW MOULD 1/2" SCABBARD	CL00124764	
2	544887001	I		1	PLASTIC, FRONT HANDLE\090758	CL00076585	
1	662083002	6		6	SCREW	CL00002877	

PRELIMINARY

Techtronic Industries Co. Ltd. PART NAME RYOBI 18V 30CM BRUSHLESS CHAI		
WEIGHT & TOLERANCE DIMENSIONS	COLOR COLOR NAME, COLOR CHIP #	
PART NUMBERS 108731101C	SCALE 1 of 1	REV A

UNLESS OTHERWISE SPECIFIED, DIMENSIONS ARE IN MILLIMETERS.
 UNLESS OTHERWISE SPECIFIED, DIMENSIONS ARE IN MILLIMETERS.
 ALL RIGHTS OF DESIGN OR INVENTION ARE RESERVED.