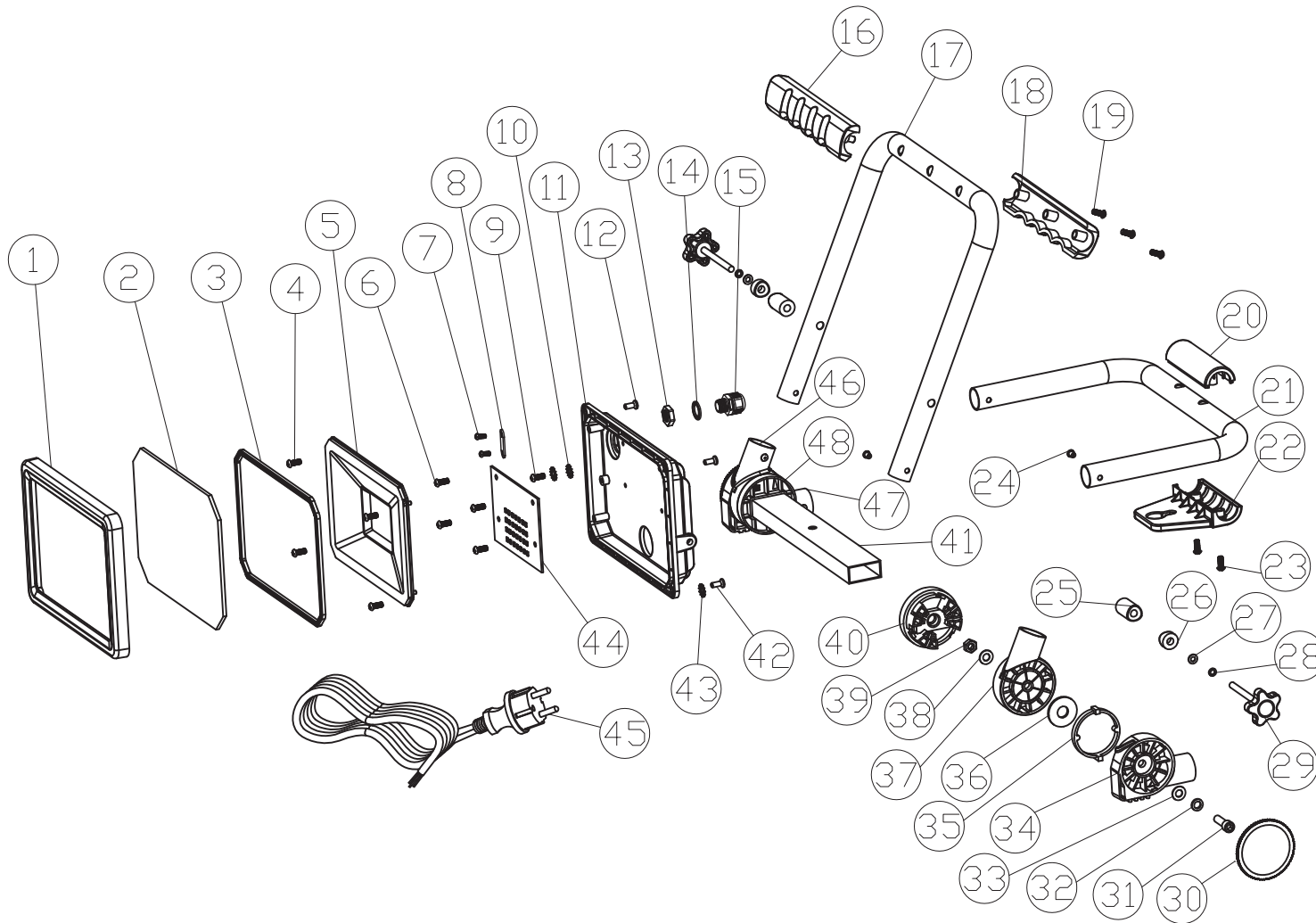


2230A-3F



NO	Name	Quantity
1	Frame	1
2	Tempered glass	1
3	Sealing ring	1
4	Screws_M3*6	4
5	Reflector panel	1
6	Screws_M4*5	4
7	Screws_M3*6	2
8	Cable ramp	1
9	Screws_M4*5	1
10	Tooth pad_φ4	2
11	Lamp body	1
12	Screws_M4*8	3
13	Nut_M16*1.5	1
14	gasket	1
15	Plastic waterproof joint	1
16	Handle upper cover	1
17	Handle tube	1
18	Handle upper cover	1
19	Screws_φ3.5*18	3
20	Support cover	1
21	Seat tube	1
22	Wall bracket	1
23	Screws_φ4*14	2
24	Rivet_φ4*8	4
25	Raised column	2
26	Concave washer	2
27	Flat gasket	2
28	Spring washer	2
29	Plum screw	2
30	Hinged cover	2
31	Screw_M6*20	2
32	Spring washer	2
33	Flat gasket	2
34	Hinge	1
35	Gear retaining ring	2
36	Damping silicone pad	2
37	Hinge	1
38	Flat gasket	2
39	Nut	2
40	End cover	1
41	Square pipe cross arm	1
42	Screws_M4*10	1
43	Tooth pad_φ4	1
44	Lamp board	1
45	Cable_H05RON-F3G1.0+VDEplug	1
46	Hinge	1
47	Hinge	1
48	End cover	1