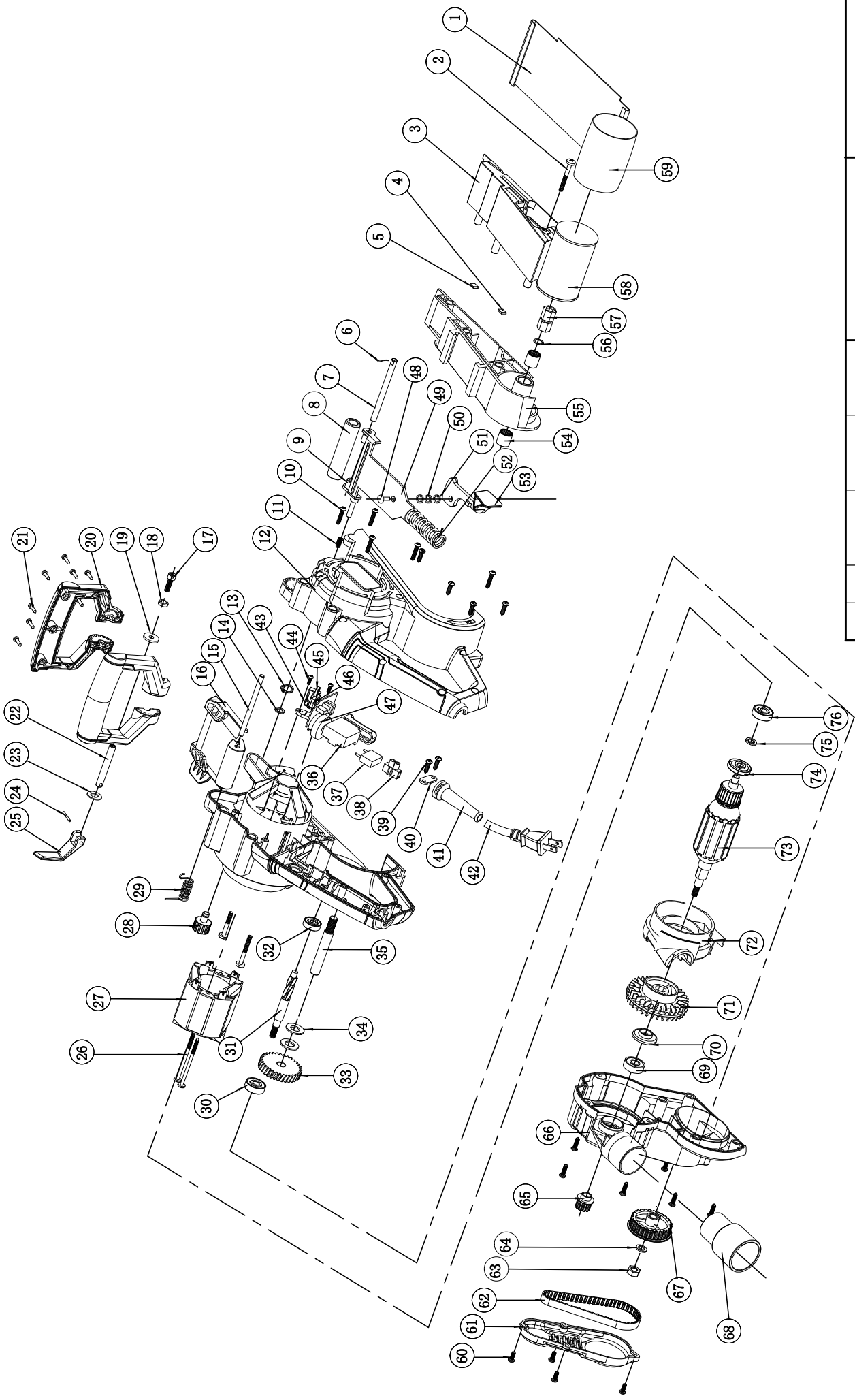


爆炸图

阶段	标记	重量	比例
设计			
安全	工艺		
审核	标准化		
	批准		
共 1 张	第 1 张	共 1 张	第 1 张



图样代号

序号	代号	名称	数量	序号	代号	名称	数量
1	2030010067	底板	1	41	3140010004	电缆护套	1
2	4030010125	自攻螺钉ST3. 9X35	3	42	1190290013	插头线	1
3	3160040115	铝底座护罩	1	43	1230030032	铜刷架组件	2
4	3150240035	陶瓷片I	1	44	4030010020	自攻螺钉ST2. 9X6	4
5	3150240036	陶瓷片II	1	45	2050020027	涡簧	2
6	4610010002	软钢丝	1	46	1230010141	碳刷	2
7	2040160217	从动轮轴	1	47	1130010266	线路板	1
8	2020160033	从动轮	1	48	4090040020	铆钉	1
9	4010020048	滚针轴承	2	49	2030100083	从动轮固定架	1
10	4030010106	自攻螺钉ST3. 9X19	6	50	4040020013	铝底座	1
11	2050040073	弹簧	1	51	2030020367	垫片 $\varnothing 6.5 \times \varnothing 12 \times 1$	2
12	3011320001	机壳	1	52	2050060263	弹簧	1
13	4100020037	6mm轴用档圈	1	53	3120100060	涨紧扳手	1
14	2030020369	垫片 $\varnothing 7.2 \times \varnothing 10.5 \times 1$	1	54	4010020003	滚针轴承	2
15	2040160218	销子 $\varnothing 5 \times 76$	1	55	2020140016	$\varnothing 6$ 波形垫圈	1
16	3160040114	活动护罩	1	56	2030020368	垫片 $\varnothing 8.2 \times \varnothing 11 \times 0.5$	1
17	4020080010	内六角圆柱头螺钉M5X12	1	57	4060010037	螺母 M8X25	1
18	4040040001	弹垫	1	58	3150230010	主动轮	1
19	2030020380	平垫 $\varnothing 6 \times \varnothing 18 \times 2$	1	59	3140080050	主动轮橡胶圈	1
20	3120070059	辅助手柄	1	60	4030010243	自攻螺钉ST3. 9*10	1
21	4030010034	自攻螺钉ST2. 9*16	9	61	3160090118	带轮罩	1
22	2040290043	副手柄主轴	1	62	3150030023	同步带	1
23	2030020402	平垫 $\Phi 16 \times \Phi 8 \times 0.8$	1	63	4060010037	六角防松螺母	1
24	2040160099	副手柄销	1	64	4040070003	内齿锁紧垫片	1
25	2020230001	副手柄锁紧扳手	1	65	2020160032	小带轮	1
26	4030010169	自攻螺钉ST4. 2X55	2	66	3150160256	带轮座	1
27	1020090004	定子	1	67	3150030022	大带轮	1
28	3120060070	砂带调节旋钮	1	68	3180040127	吸尘管	1
29	2050050056	扭簧	1	69	4010010048	608-2RS	1
30	4010010106	627-2RS	1	70	3150240031	608防尘垫圈	1
31	2040040139	带轮轴	1	71	3150010123	风叶	1
32	4010010031	626-2Z	1	72	3150050100	导风圈	1
33	2040080056	大齿轮	1	73	1010090004	转子	1
34	2030020390	垫片 $\varnothing 10 \times \varnothing 20 \times 0.8$	2	74	3150130030	3018角磨防尘垫圈	1
35	2040290104	主动轮轴	1	75	2030020120	调整垫片	1
36	1061040007	开关	1	76	4010010053	607-2RS	1
37	1210020080	电容	1	江 苏 金 鼎 JD3764砂带机			
38	1250010003	单接线柱	1				
39	4030010099	自攻螺钉ST3. 9*14	15				
40	2030050002	压线板	1				

序号	代号	名称	数量	序号	代号	名称	数量
1	2030010067	Base plate	1	41	3140010004	Cord Sleeve	1
2	4030010125	Screw ST3.9X35	3	42	1190290013	Plug and Cord	1
3	3160040115	Alu base shield	1	43	1230030032	Brush holder	2
4	3150240035	Ceramics I	1	44	4030010020	Screw ST2.9X6	4
5	3150240036	Ceramics II	1	45	2050020030	Spring	2
6	4610010002	Soft steel wire	1	46	1230010141	Carbon brush	2
7	2040160217	Driven wheel spindle	1	47	1130010266	PCB	1
8	2020160033	Driven wheel	1	48	4090040020	Rivet	1
9	4010020048	Needle bearing HK0609	2	49	2030100083	Driven wheel fixed mount	1
10	4030010106	Screw ST3.9X19	6	50	4040020013	Ø6 washer	1
11	2050040073	Spring	1	51	2030020367	Washer Ø6.5XØ12X1	2
12	3011320001	Enclosure	1	52	2050060263	Spring	1
13	4100020037	6mm Circlip for spindle	1	53	3120100060	Tightening lever	1
14	2030020369	Washer Ø7.2XØ10.5X1	1	54	4010020003	Needle bearing	2
15	2040160218	Pin Ø5x76	1	55	2020140016	Aluminum base	1
16	3160040114	Foldable cover	1	56	2030020368	Washer Ø8.2XØ11X0.5	1
17	4020080010	Hex screw M5X12	1	57	4060010037	Nut M8X25	1
18	4040040001	Spring washer	1	58	3150230010	Drive wheel	1
19	2030020380	Washer Ø6XØ18X2	1	59	3140080050	Drive wheel rubber sleeve	1
20	3120070059	Auxiliary handle	1	60	4030010243	Screw ST3.9*10	1
21	4030010034	Screw ST2.9*16	9	61	3160090118	Belt wheel shield	1
22	2040290043	Secondary handle spindle	1	62	3150030023	Synchronous belt	1
23	2030020402	Washer Φ16XΦ8X0.8	1	63	4060010037	Hex nut M8X25	1
24	2040160099	Pin for auxiliary handle	1	64	4040070003	Ø6 Washer	1
25	2020230001	Auxiliary handle wrench	1	65	2020160032	Small belt wheel	1
26	4030010169	Screw ST4.2X55	2	66	3150160256	Belt wheel base	1
27	1020090004	Stator	1	67	3150030022	Big belt wheel	1
28	3120060070	Knob	1	68	3180040127	Dust vacuum adaptor	1
29	2050050056	Torsion spring	1	69	4010010048	Bearing 608-2RS	1
30	4010010106	Ball bearing 627-2RS	1	70	3150240031	Dust proof washer	1
31	2040040139	Teeth spindle	1	71	3150010123	Fan	1
32	4010010031	Ball bearing 626-2Z	1	72	3150050100	Wind guider ring	1
33	2040080056	Big gear	1	73	1010090004	Rotor	1
34	2030020390	Washer Ø10XØ20X0.8	2	74	3150130030	Dust proof washer	1
35	2040290104	Drive wheel spindle	1	75	2030020120	Washer	1
36	1061040007	Switch	1	76	4010010053	Bearing 607-2RS	1
37	1210020080	Capacitance	1			<b>江 苏 金 鼎</b> JD3764砂带机	
38	1250010003	Binding post	1				
39	4030010099	Screw ST3.9*14	15				
40	2030050002	Cord clamp	1				