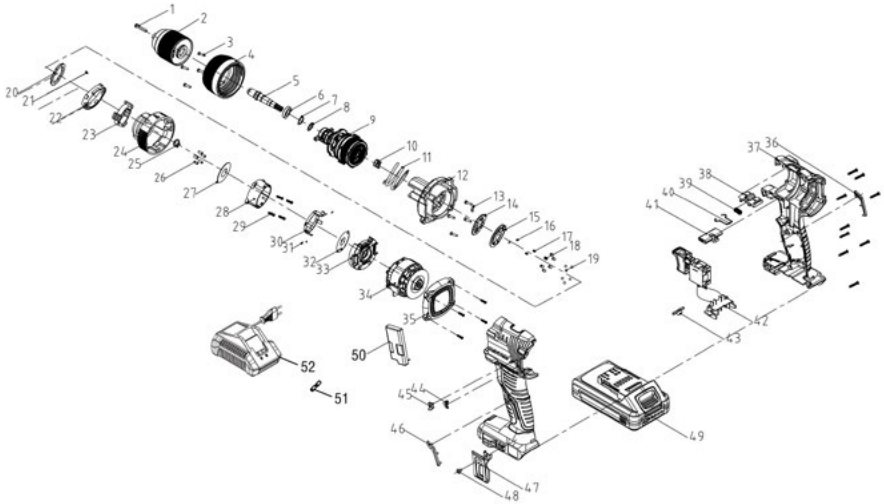


20ID3-60BL.2A



n°	Description	n°	Description	n°	Description	n°	Description
1	Screw M6X24T type	16	Steel ball	31	Inner ring side pin	46	Left decorative part
2	Chuck	17	Sound spring	32	Big gasket	47	Belt hook No3
3	Screw ST3*14(T type)	18	Torque needle roller	33	Motor end cap	48	Screw M4X8
4	Torque sleeve	19	Steel ball	34	Motor and pcb assembly	49	Battery pack
5	Output shaft	20	Gasket for torque sleeve	35	Back cover	50	Protection board and support assembly
6	Deep groove ball bearing	21	Screw 2.5*8 T type	36	Right decorative part	51	Heat shrink tube
7	Steel ball	22	Toggle ring	37	Housing	52	Charger
8	Small gasket	23	Internal thread	38	Speed adjustment button		
9	No.62 powder metallurgy assembly	24	Indicating ring	39	Spring for speed adjustment button		
10	Impact spring	25	Circlip	40	No.7 elastic steel wire		
11	Torque spring	26	Self-locking pin	41	Push rod		
12	Front housing for gear box (Built-in moving teeth disk)	27	Gasket	42	Switch assembly		
13	No 11 Tuning fork	28	Back shell for gear box	43	Transparent lampshade		
14	Sound gasket	29	Srew ST2.8*12(T type)	44	Left arrow		
15	Cover plate	30	Toggle support	45	Right arrow		

