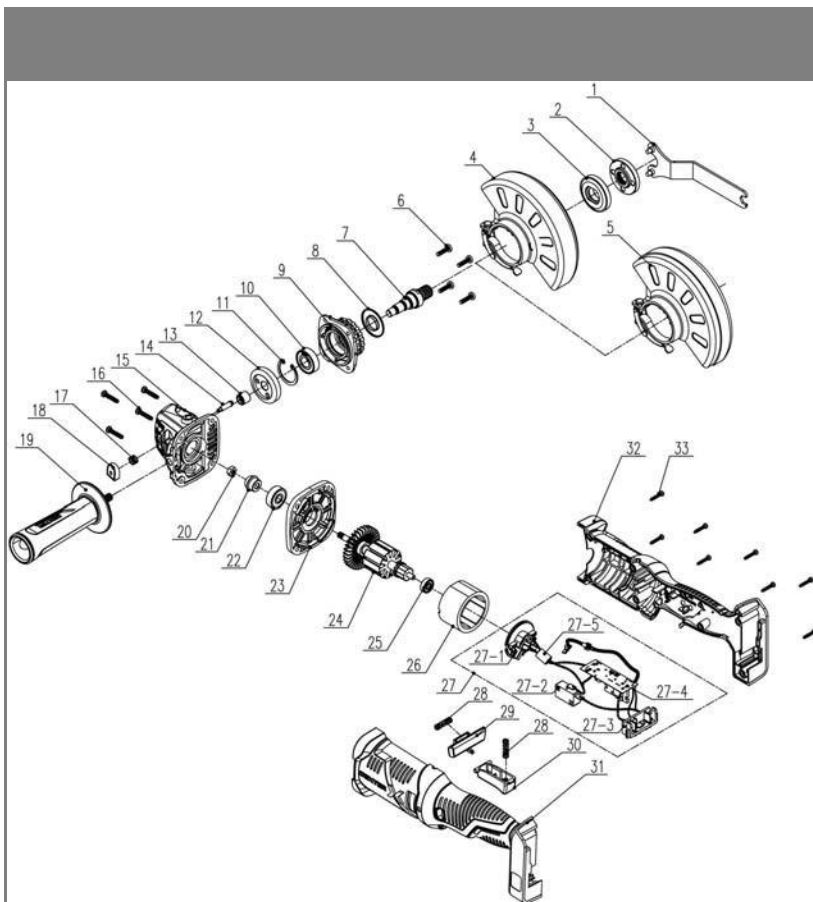


n°	Description	n°	Description	n°	Description	n°	Description
1	Screw M6X24T type	16	Steel ball	31	Inner ring side pin	46	Left decorative part
2	Chuck	17	Sound spring	32	Big gasket	47	Belt hook No3
3	Screw ST3*14(T type)	18	Torque needle roller	33	Motor end cap	48	Screw M4X8
4	Torque sleeve	19	Steel ball	34	Motor and pcb assembly	49	2AHBattery+5AHBattery
5	Output shaft	20	Gasket for torque sleeve	35	Back cover	50	Protection board and support assembly
6	Deep groove ball bearing	21	Screw 2.5*8 T type	36	Right decorative part	51	Heat shrink tube
7	Steel ball	22	Toggle ring	37	Housing	52	Charger
8	Small gasket	23	Internal thread	38	Speed adjustment button		
9	No.62 powder metallurgy assembly	24	Indicating ring	39	Spring for speed adjustment button		
10	Impact spring	25	Circlip	40	No.7elasticsteelwire		
11	Torque spring	26	Self-locking pin	41	Push rod		
12	Front housing for gear box (Built-in moving teeth disk)	27	Gasket	42	Switch assembly		
13	No 11 Tuning fork	28	Backshellforgearbox	43	Transparent lampshade		
14	Sound gasket	29	Srew ST2.8*12(T type)	44	Left arrow		
15	Cover plate	30	Toggle support	45	Right arrow		

20VAG2-125.1:



POS	DESCRIPTION
1	Spanner
2	Outer flange
3	Inner flange
4	Polishing safety guard
5	Incise safety guard
6	Screw M4*16
7	Output shaft
8	Dust Cover
9	Cover
10	Bearing
11	Snap ring $\Phi 28$
12	Big gear
13	Needle Bearing
14	Shaft locking pin
15	Head shell
16	Screw ST4*20
17	Reset Spring
18	Button
19	Auxiliary handle

POS	DESCRIPTION
20	Hex Nut
21	Wheel Gear
22	Bearing
23	Middle cover
24	Rotor Assembly
25	Bearing 625 Z
26	Stator Assembly
27	Electronic component
27-1	Carbon brush holder assy
27-2	Switch
27-3	Contact pin Ass'y
27-4	PCB
27-5	Magnetic ring
28	Spring $\Phi 0.6, 65Mn$
29	Anti-lock button
30	Trigger
31	Left housing
32	Right housing
33	Screw ST3*16