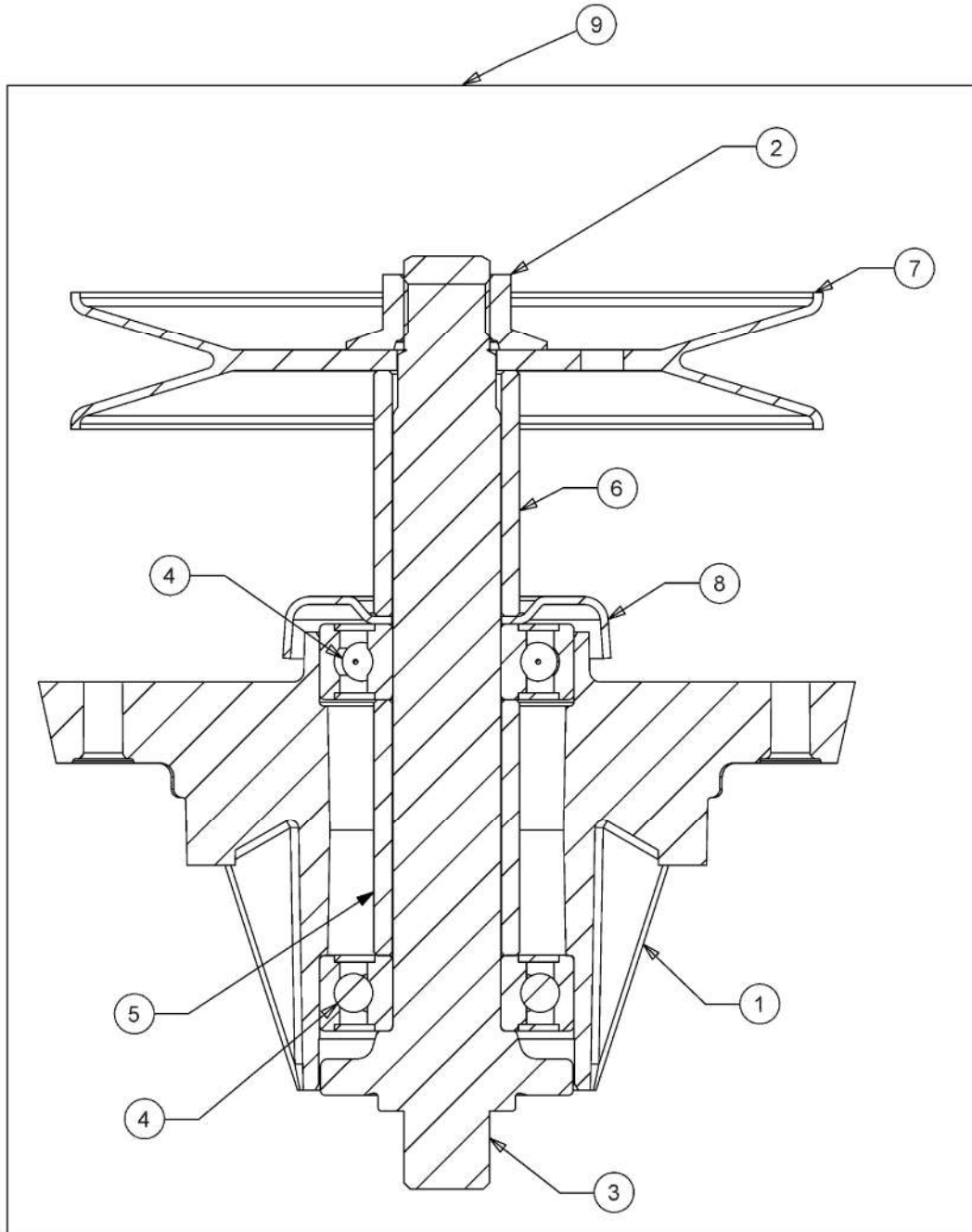


# PONY 92T-S

13AB77BY609

2023

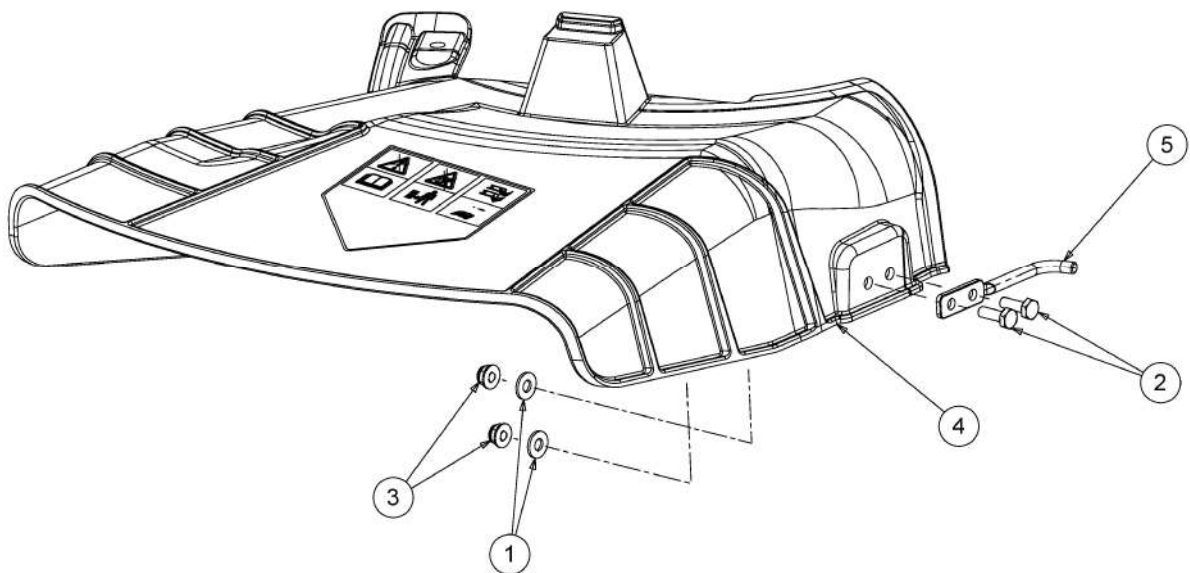
Table-No.:	Description
618-09236-01	Palier 618-09236
631-07180-03	DÚflecteur
813-062092-06	Enclenchement plateau de coupe, Poulie moteur
813-062078-04	Relevage plateau de coupe
813-064112-05	"Plateau de coupe E (36"/92cm)"
813-063842-01	Kit mulching
813-060662-11	Axe avant
813-062012-00	Enjoliveur
813-061032-10	Frein d'arrÚt
813-060921-02OG	Roues, fusÚes d'essieu
813-060293-21	SystÚme direction
813-010305-00	Volant
813-060886-20	Entra_nement de roulement, Courroie, Pedale
E3-11416A-01	Moteur
813-070789-00	Accessoires moteur
813-061066-06	RÚservoir
813-064116-04	Couvertures Cadre
813-060295-12R	Jupe
813-060906-25	ChÔssis
813-062321-06	Capot de moteur
E3-02721A-01	Marchepied garniture
813-070788-05	RÚglage de siÚge
813-062983-00	SiÚge
E3-11414A-01	Cable de gaz
813-061151-11	Tableau de bord
731-08542C-02	Tableau de bord piÚce supÚrieure
813-064062-01	Assortiment Úlectrique
731-12705A-01	Conduit air
E3-06862B-01	Couvercle de protection du tableau de bord
E3-04007A-01	Contacteur
E3-10900A-01	CU
813-064058-02	Batterie



618-09236-01

## Palier 618-09236

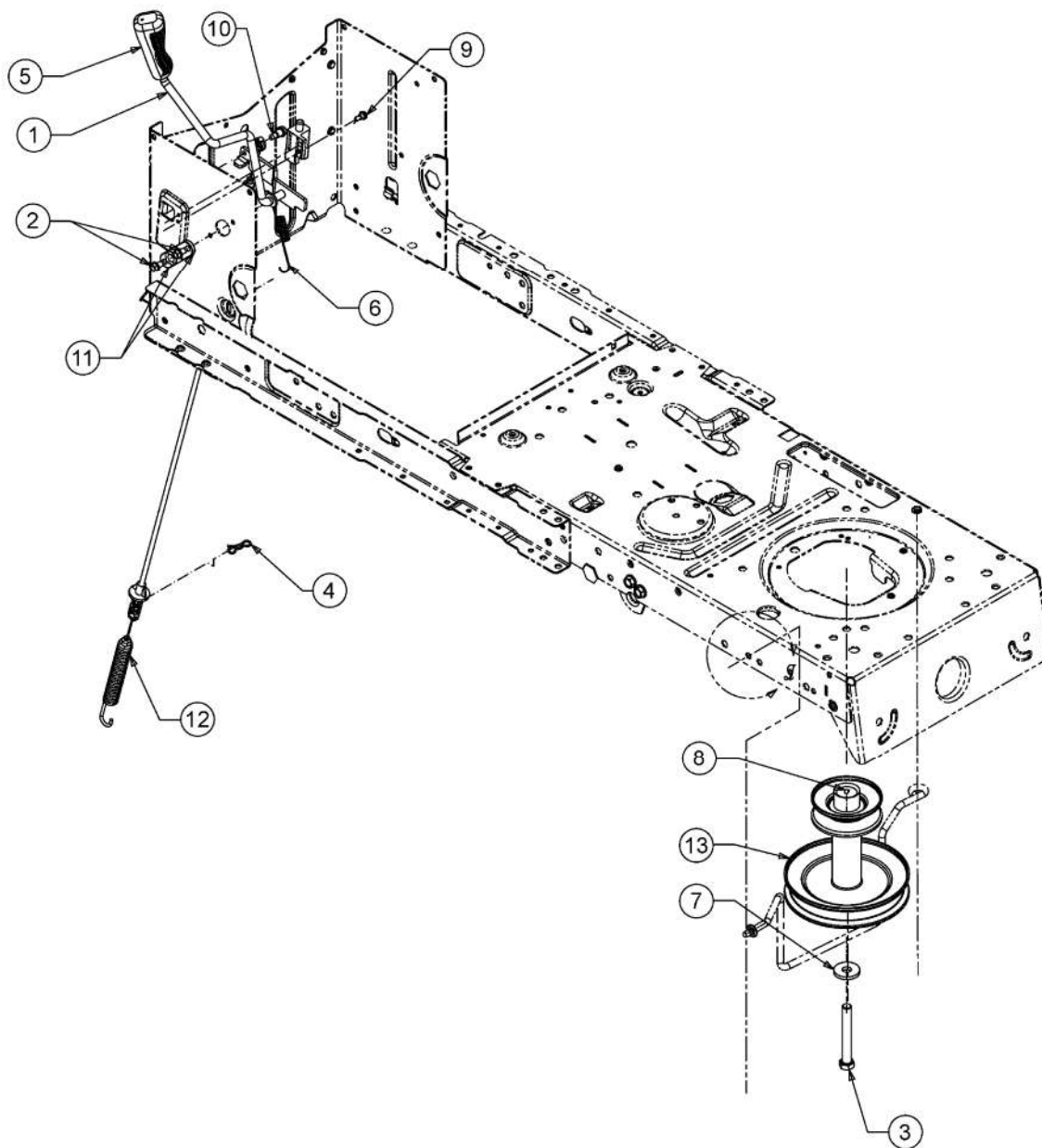
Fig.	No. Pièces	Désignation	Numero de la norme	Nbr.
1	619-04183B	CORPS DE PALIER	FINISH:WIE GEGOSSEN	1
2	712-05134	ECROU	FINISH:MTD SPEC-100015+WAX	1
3	----	indisponible		X
4	741-0919B	ROULEMENT DE PALIER DE LAME	FINISH:	2
5	750-04936	ENTRETOISE	FINISH:GEÍLT	1
6	750-06152	ENTRETOISE	DAMPFBEHANDELT&ÍL GEDIPPT:BLK	1
7	756-05038	POULIE DE PALIER DE LAME	FINISH:VERZINKT, SIEHE ZG.	1
8	783-08435	PROTECTION DE ROULEMENT	FINISH:SPEC-701-101625	1
9	618-09236	PALIER DE LAME CPL	618-09236	1



631-07180-03

# DÚflecteur

Fig.	No. Pièces	DÚsignation	Numero de la norme	Nbr.
1	1751	RONDELLTE	1751	2
2	710-3015	VIS:1/4-20:.75:GR5:STD	FINISH:MTD SPEC-100015	2
3	712-04064	ECROU HEXAGONAL	FINISH:SPEC-100015 912-04064	2
4	731-20074			1
5	747-09890			1



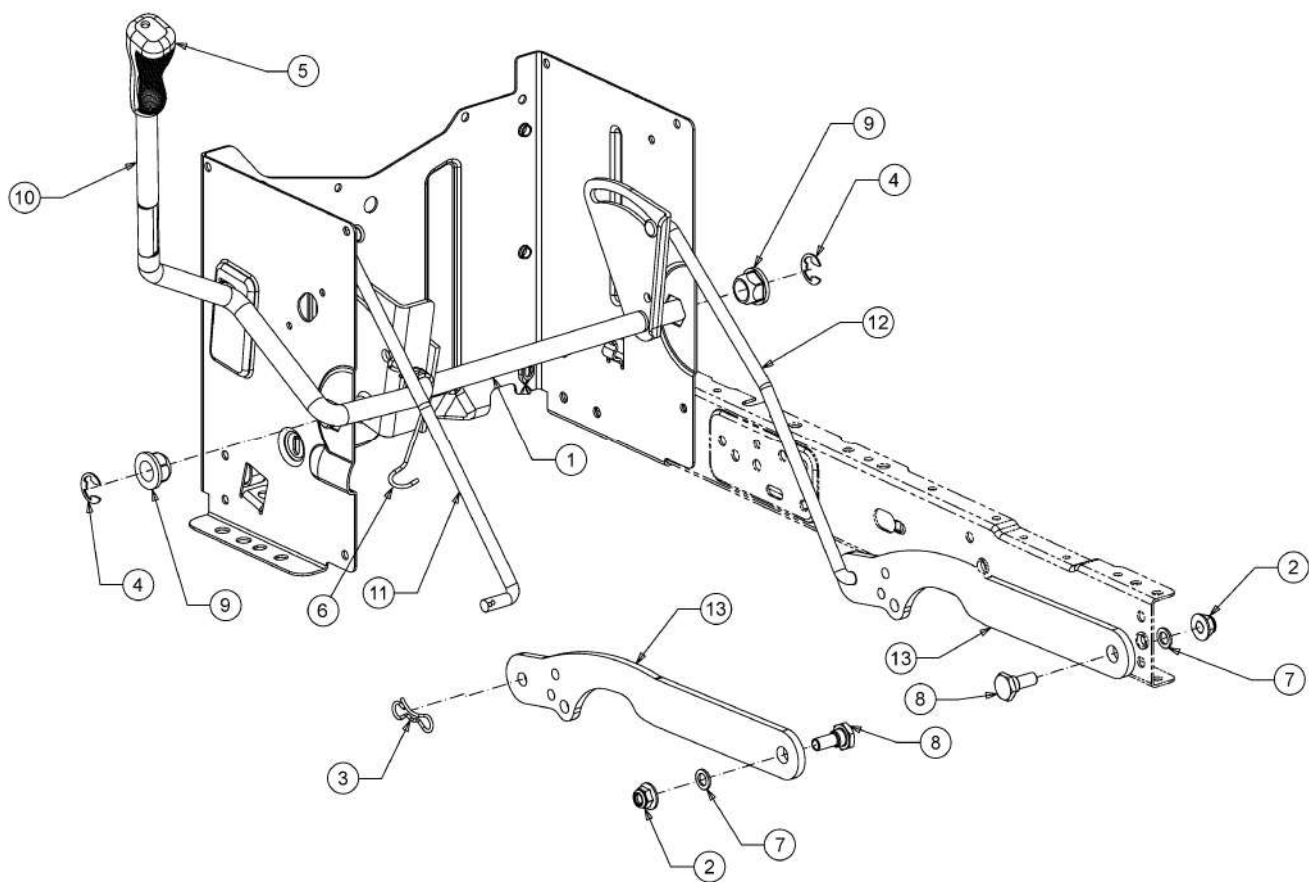
813-062092-06

## Enclenchement plateau de coupe, Poulie moteur

Fig.	No. Pièces	Désignation	Numero de la norme	Nbr.
1	647-05041			1
2	710-0599	VIS A SIX PANS CREUX	FINISH:MTD SPEC-101617	2
3	710-3157A	VIS HEX HHCS:7/16-20:3.25GR5	LOCK FINISH:701-01000	2
4	714-04040	GOUPILLE	FINISH:ASTM F1941 FE/ZN 3AN	1
5	720-04049A	POIGNEE PLASTIQUE	FINISH:SCHWARZ	1
6	732-05376	RESSORT LEVIER PTO	FINISH:MTD SPEC-701-01006	1
7	736-0322	RONDELLE .450 X 1.250 X .164	FINISH:SPEC-100016 936-0322	1
9	738-04237A	AXE EPAULE	FINISH:MTD SPEC-100016	1
10	738-04425	AXE EPAULE	FINISH:MTD SPEC-100016	1
11	741-04119A	SUPPORT PLASTIQUE	KUNSTSTOFF:SCHWARZ	2
12	746-05124A		746-05124A	1
13	756-04196A	POULIE MOTEUR	3.39 x 6.12 DIA:SPEC-100015	1



Relevage plateau de coupe

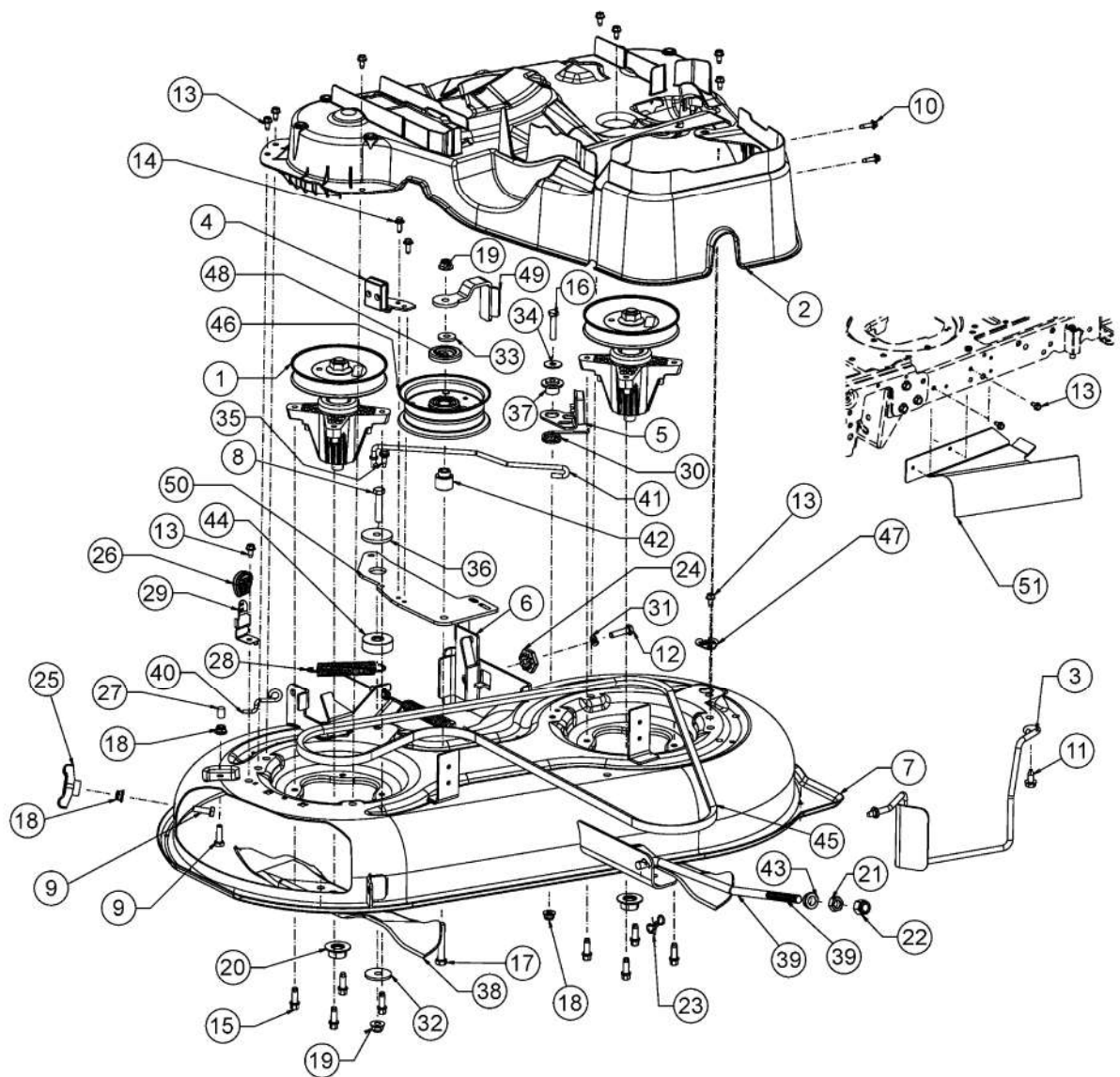


813-062078-04

## Relevage plateau de coupe

Fig.	No. Pièces	Désignation	Numero de la norme	Nbr.
1	683-04334637		ROW	1
2	712-04065	ECROU HEXAGONAL	FINISH:SPEC-100015 912-04065	2
3	714-04043	GOUPILLE	FINISH:VERZINKT	2
4	716-0106A	CIRCLIPS	FINISH:PHOSPHATIERT	2
5	720-0298	POIGNEE	FARBE:KUNSTSTOFF SCHWARZ	1
6	732-04438	RESSORT	FINISH:701-01006	1
7	736-0140	RONDELLE .385 ID X .62 OD	FINISH:MTD SPEC-100015	2
8	738-0380	AXE	FINISH:SPEC-100015 938-0380	2
9	741-0225	BAGUE HEXAGONALE TEFLON 6 PANS	FINISH:KUNSTSTOFF SCHWARZ	2
10	747-04653A		747-04653A	1
11	747-06237A		747-06237A	1
12	747-06253		747-06253	1
13	783-0678C637	BRAS	783-0678C-0637	2

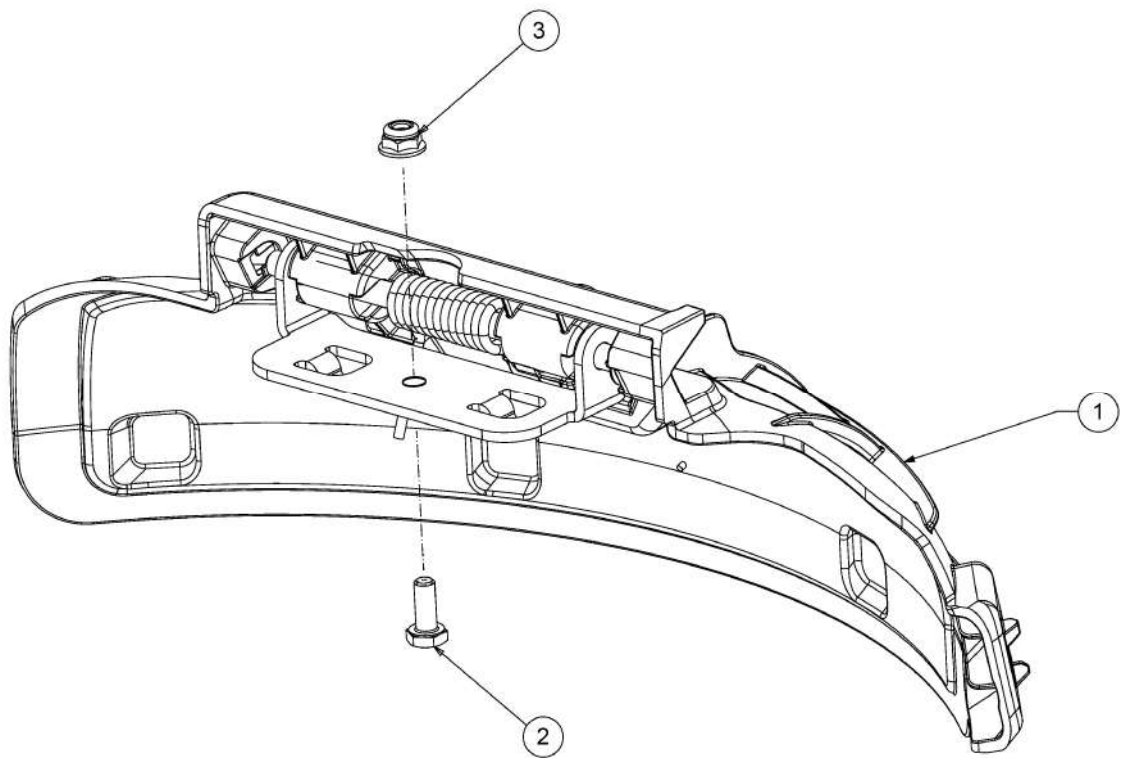
"Plateau de coupe E (36"/92cm)"



813-064112-05

## "Plateau de coupe E (36"/92cm)"

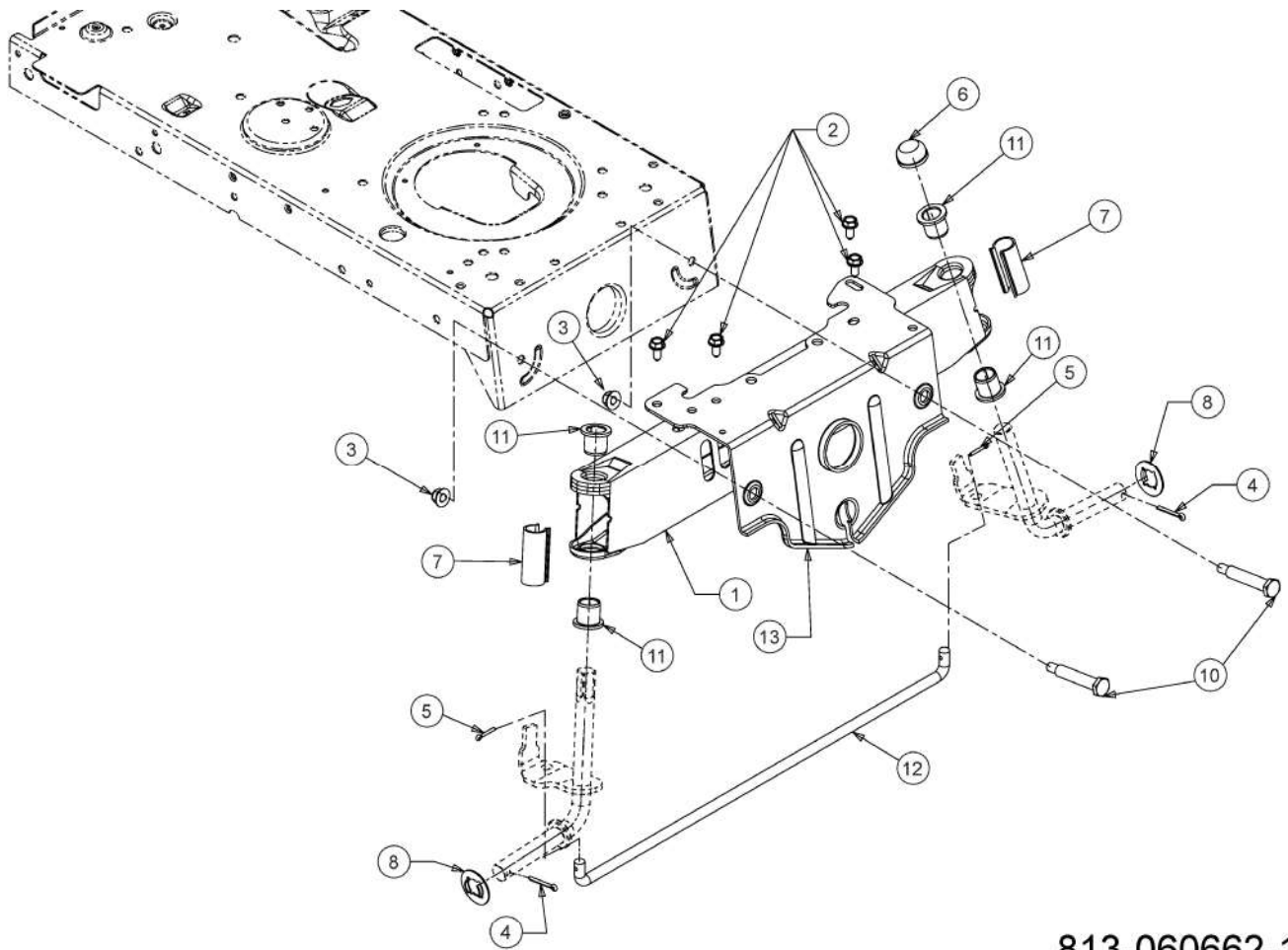
Fig.	No. Pièces	Désignation	Numero de la norme	Nbr.
1	618-09236	PALIER DE LAME CPL	618-09236	2
2	631-08231			1
3	647-05760			1
4	683-05182B			1
5	683-05396			1
6	683-06474637		683-06474637	1
7	683-06994A			1
8	710-0347	VIS HEX. 3/8-16:1.75:GR5:STD	FINISH:MTD SPEC-100015	1
9	710-0376	VIS HEX.:5/16-18:1.00:GR5:STD	FINISH:MTD SPEC 701-01006	2
10	710-06147	VIS	FINISH:SPEC-000087 (BLACK)	2
11	710-04484	VIS HEX. TT:5/16-18:.750:HXIND	FINISH:MTD SPEC-100016 TYPE 1	1
12	710-0528	VIS HEX. 5/16-18:1.25:GR5:STD	FINISH:SPEC-100015 910-0528	1
13	710-0599	VIS A SIX PANS CREUX	FINISH:MTD SPEC-101617	11
14	710-06133	VIS	FINISH:SPEC-000087 (BLACK)	2
15	710-06322	VIS	FINISH:SPEC-100016 TYPE 1	8
16	710-0805A	VIS HEX.:5/16-18:1.50:GR5:STD	FINISH:MTD SPEC-100015	1
17	710-3011	VIS HEX.:3/8-16:2.25:GR5:STD	FINISH:MTD SPEC-100015	1
18	712-04063	ECROU HEX. AVEC FLANC	FINISH:MTD SPEC-100015	3
19	712-04065	ECROU HEXAGONAL	FINISH:SPEC-100015 912-04065	2
20	712-05134	ECROU	FINISH:MTD SPEC-100015+WAX	2
21	712-3048	ECROU	FINISH:SPEC-100015	1
22	712-3083	ECROU HEX. 1/2-13:GRB:NYLON	FINISH:MTD SPEC-100015	1
23	714-04043	GOUPILLE	FINISH:VERZINKT	1
24	717-04074	PIGNON HAUTEUR PLATEAU	PHOS & SPEC-100015 917-04074	1
25	720-04122	ECROU PAPILLON	FINISH: SIEHE ZG.	1
26	720-04130	POIGN_E NOIRE	720-04130	1
27	720-05010	BOUCHON	FINISH:SCHWARZ	1
28	732-04629		GELBVERZINKT:MTD-SPEC-101616	1
29	732-05610A		FINISH:701-01006	1
30	732-08321			1
31	736-0119	RONDELLE	FINISH:MTD SPEC-100016	1
32	736-0227	RONDELLE 3/8X1.00"	FINISH:SPEC-100015 936-0227	1
33	736-0258	RONDELLE PLATE .385x1.0x.135	FINISH:SPEC-100015 936-0258	1
34	736-3078	RONDELLE .344 x 1.00 x .063:HT	FINISH:701-01001	1
35	738-04184A	VIS A EPAULE:.368x.113:TT:1/4-	TT:FINISH MTD SPEC-100016	1
36	738-05082	RONDELLE EPAULEE	FINISH:DAMPFBEHANDELT	1
37	738-05272		738-05272	1
38	742-05629	LAME 18:225"		2
39	747-05141B	TRINGLE	FINISH:SPEC-100015 or701-01007	1
40	747-06506			1
41	747-09330			1
42	748-05037B	ENTRETOISE	FINISH:DAMPFBEHANDELT	1
43	748-06584	RONDELLE	748-06584	1
44	750-06184	ENTRETOISE	FINISH:DAMPFBEHANDELT	1
45	754-06434			1
46	756-05034A	POULIE TENDEUR COUPE	FINISH:MTD SPEC-100015	1
47	783-06464	BOUCHON	FINISH:MTD SPEC-100015	1
48	783-08389	PROTECTION DE POULIE	FINISH:PLAIN	1
49	783-08619A		783-08619A	1
50	783-11548			1
51	783-13954			1



813-063842-01

# Kit mulching

Fig.	No. Pièces	Désignation	Numero de la norme	Nbr.
1	631-07179B			1
2	710-0751	VIS HEX.: 1/4-20:.620:GR5:STD	FINISH:SPEC-100015	1
3	712-04064	ECROU HEXAGONAL	FINISH:SPEC-100015 912-04064	1

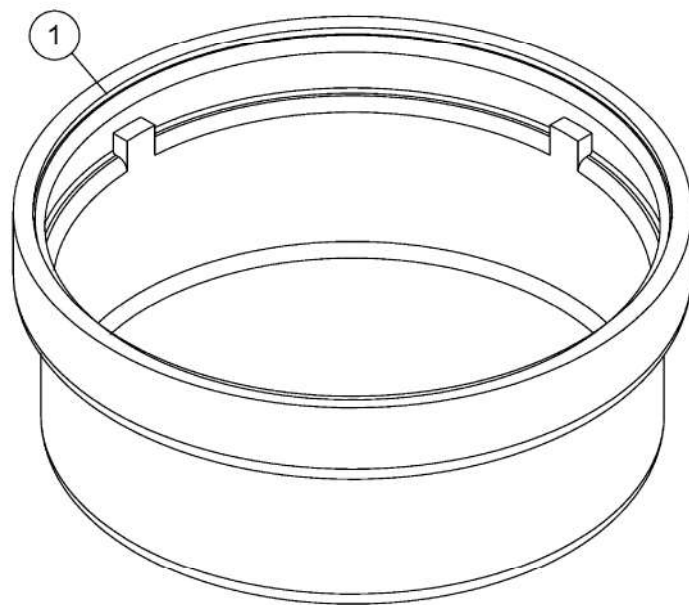


813-060662-11

## Axe avant

Fig.	No. Pièces	Désignation	Numero de la norme	Nbr.
1	683-0128B637	ESSIEU AVANT	SCHWARZ GEPULVERT	1
2	710-04484	VIS HEX. TT:5/16-18:.750:HXIND	FINISH:MTD SPEC-100016 TYPE 1	4
3	712-04065	ECROU HEXAGONAL	FINISH:SPEC-100015 912-04065	2
4	714-0162	GOUPILLE FENDUE 5/32:1.25	FINISH:MTD SPEC-100015	2
5	714-0474	GOUPILLE	FINISH:MTD SPEC-100015	2
6	726-0341	CAPUCHON CLIPS	FINISH:SCHWARZ	1
7	731-04057A	PALIER DE GRAISSAGE	LT5:MATERIAL PP SCHWARZ	2
8	736-04228B	RONDELLE	SPECIAL:FINISH SPEC-701-100015	2
10	738-04128	VIS A EPAULE .500x2.38:3/8-16	FINISH:MTD SPEC-100015	2
11	741-0660A	BAGUE ESSIEU DE ROUE	FINISH:KUNSTSTOFF SCHWARZ	4
12	747-04299A	TRINGLE DE DIRECTION	FINISH:SPEC-100015 or E-Coat	1
13	783-05326D-S	SUPPORT AVANT	783-05326D-S	1

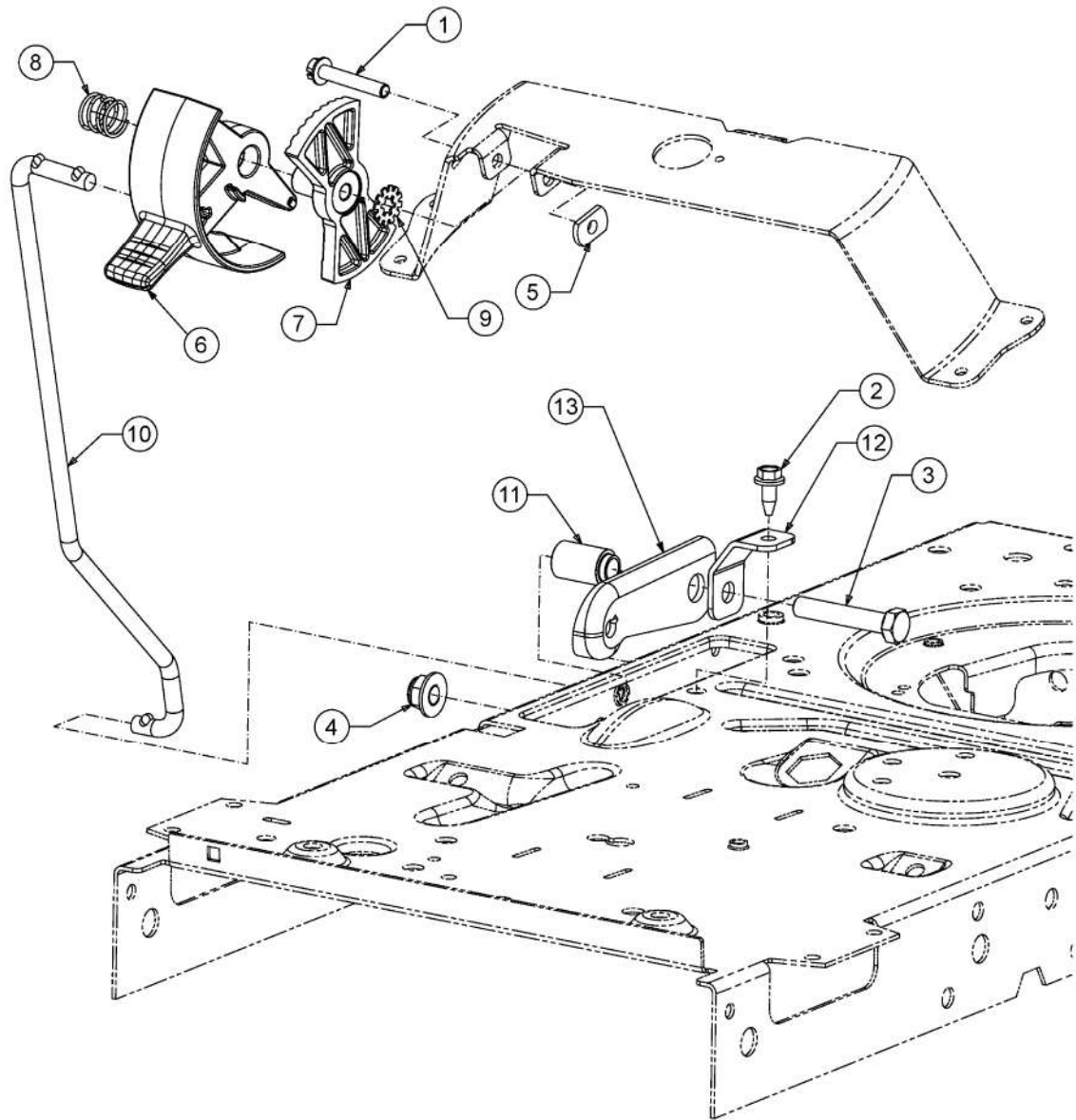




813-062012-00

# Enjoliveur

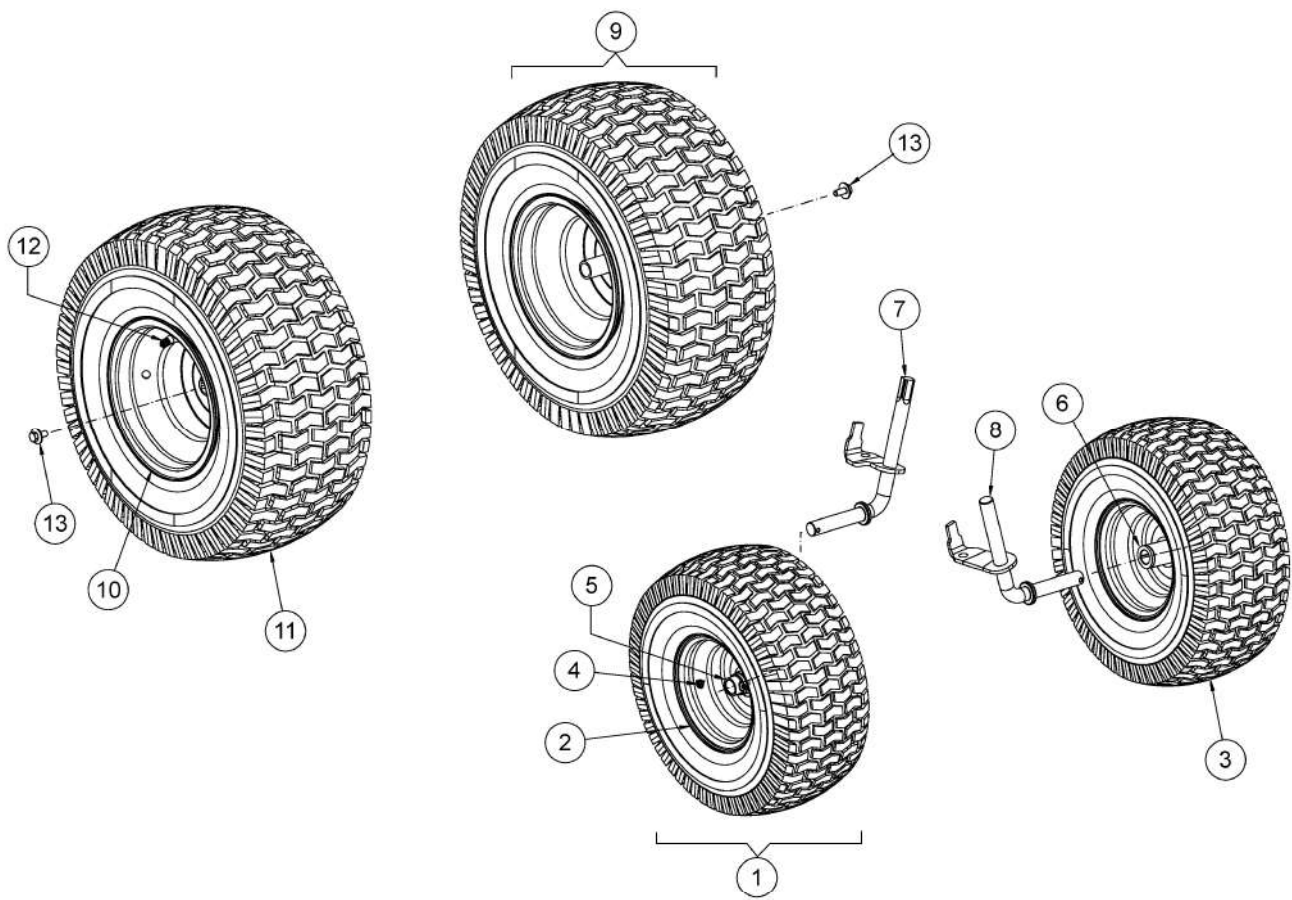
Fig.	No. Pièces	Désignation	Numero de la norme	Nbr.
1	731-0484A	ENJOLIVEUR DEVANT	KUNSTSTOFF SCHWARZ 931-0484A	2



813-061032-10

# Frein d'arrût

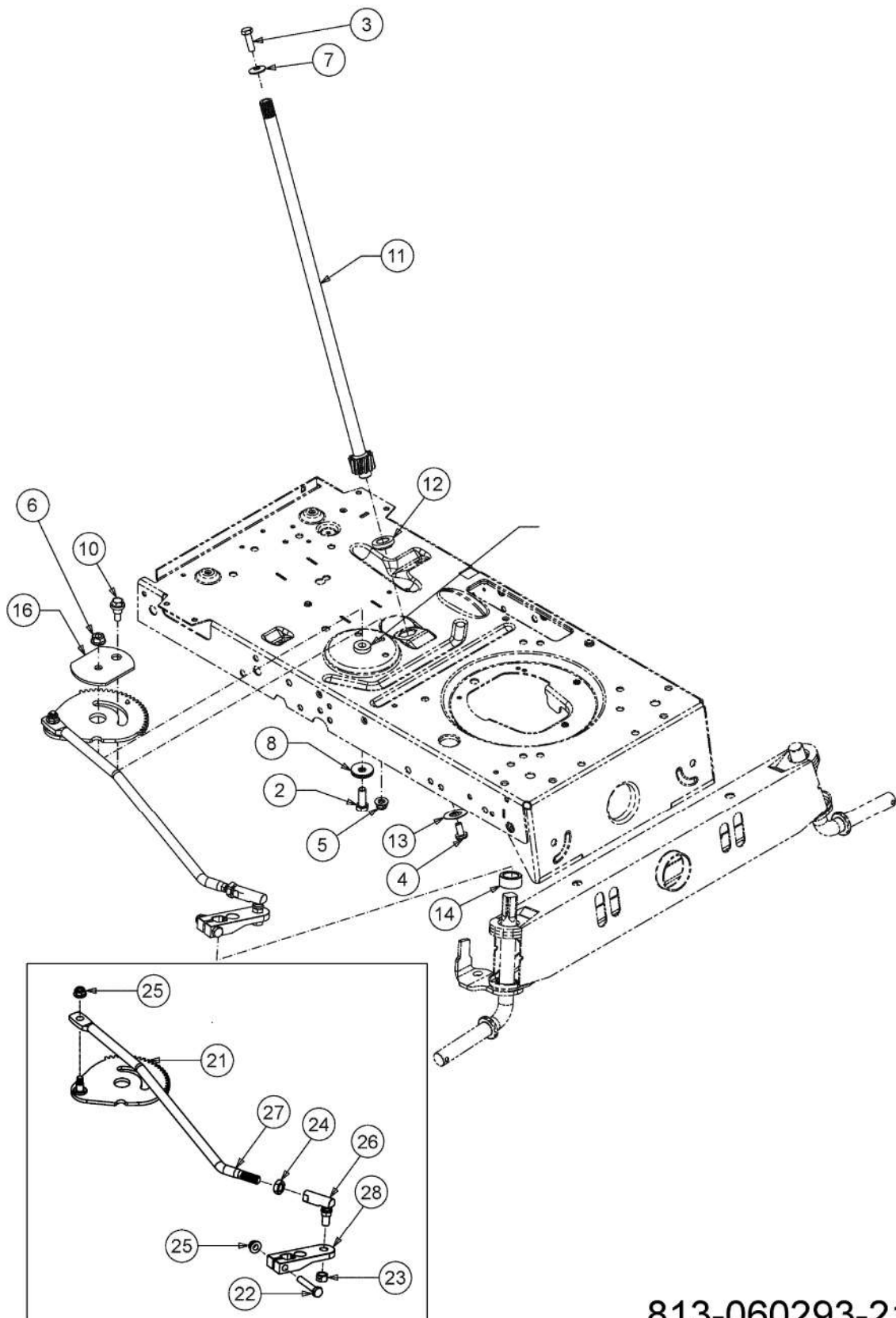
Fig.	No. Pièces	Désignation	Numero de la norme	Nbr.
1	710-04860C		710-04860C	1
2	710-1652	VIS HEX. TT:1/4-20:.625:HXINDW	FINISH:MTD-SPEC-100016 TYPE 1	1
3	710-3184A	VIS	710-3184A	1
4	712-04065	ECROU HEXAGONAL	FINISH:SPEC-100015 912-04065	1
5	712-0414	ECROU 1/4-20	FINISH:PLAIN	1
6	731-07885B	POIGNEE DE VITESSE	FINISH:KUNSTSTOFF GELB	1
7	731-07895A	INDICATION DE VITESSE	FINISH:PLAIN (SCHWARZ)	1
8	732-04877	RESSORT	FINISH:MTD SPEC-100015	1
9	736-3006	RONDELLE 1/4 X -75	FINISH:SPEC-100016	1
10	747-05398	TRINGLE DE VITESSE	FINISH:SPEC-100015	1
11	750-04465C	ENTRETOISE	FINISH:GEILT	1
12	783-06823	SUPPORT	KONTROLLHEBEL:VERZ.SIEHE ZG.	1
13	783-06991	SUPPORT	SD-TR./HYDRO:783-06991-Z	1



813-060921-02OG

# Roues, fusées d'essieu

Fig.	No. Pièces	Désignation	Numero de la norme	Nbr.
1	634-05067-G		634-05067-G	2
2	634-05066-G		FINISH:OYSTER GRAY 788-0662	2
3	734-1731	PNEU 15X600X6 DICO MULTI-TRAC	SQ SHOULDER:TURF SAVER	2
4	734-0255	VALVE:PNEU	TR 412-P / 32.6mm / 934-0255	2
5	741-0990B	BAGUE DE ROUE AVEC GRAISSEUR	m.SCHMIERNIPPEL:FINISH SCHWARZ	2
6	741-0516B	BAGUE DE ROUE .760x1.00x1.20	FINISH:SCHWARZ	2
7	638-04013637	FUSEE DROITE	SCHWEISSTEIL:LACKIERT	1
8	638-04014A-S	FUSEE GAUCHE	SCHWARZ	1
9	634-0104-G	ROUE CPL 20X800 GRIS	FELGE:OYSTER GRAY 788-0662	2
10	634-04369-G	634-04369-WY	FINISH:OYSTER GRAY GEPULVERT	2
11	734-1730	PNEU 20X800	SQ:SH:TURF SAVER 734-1730-0902	2
12	734-0255	VALVE:PNEU	TR 412-P / 32.6mm / 934-0255	2
13	710-05339A	VIS	FINISH:MTD STD SPEC-101617	2

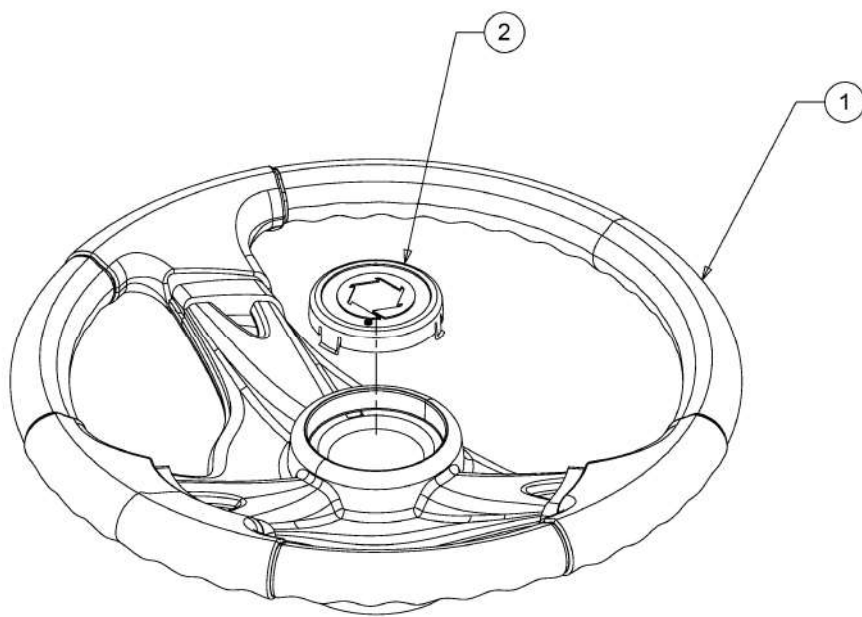


813-060293-21

## Système direction

Fig.	No. Pièces	Désignation	Numero de la norme	Nbr.
2	710-0514	VIS HEX.:3/8-16:1.00:GR5:STD	FINISH:MTD SPEC-100015	1
3	710-0643	VIS HEX.: 5/16-18:1.00:GR5	FINISH:MTD SPEC-100015	1
4	710-1309	VIS	FINISH:MTD SPEC-100015	1
5	712-04063	ECROU HEX. AVEC FLANC	FINISH:MTD SPEC-100015	1
6	712-0431	ECROU STOP 3/8-16:GRF	FINISH:MTD SPEC-100015	1
7	736-0242	RONDELLE CONIQUE.340X.872X.060	FINISH:MTD SPEC-100016	1
8	736-0331	RONDELLE CONIQUE	FINISH:MTD SPEC-100016	1
10	738-04141	AXE	FINISH:SPEC-100015	1
11	738-07154		738-07154	1
12	741-04124	PALIER DE BRIDE	FINISH:PLAIN	1
13	748-0389	BAGUE	FINISH:GEÍLT	1
14	748-04068	DOUILLE .71IDX.125 ODX.56 LG	FINISH:SPEC-100015	1
15	750-06192A	ENTRETOISE	FINISH:DAMPFBEHANDELT	1
16	783-08577A	PLAQUE DE SEGMENT	FINISH:PHOS&OIL or SPEC-100015	1
21	617-04094	SEGMENT DE DIRECTION	SCHWEISSTEIL:PHOS & OIL	1
22	710-3180	VIS HEX. 5/16-18:1.75:GR5:STD	FINISH:SPEC-100015	1
23	712-0214	ECROU	FINISH:SPEC-100015	1
24	712-0240	ECROU HEX.: 7/16-20:GR2	FINISH:MTD SPEC-100015	1
25	712-04063	ECROU HEX. AVEC FLANC	FINISH:MTD SPEC-100015	2
26	723-0448A	ROTULE DE DIRECTION 7/16-20	FINISH:MTD SPEC-100015	1
27	747-05385A	TRINGLE DE DIRECTION	FINISH:MTD SPEC 701-01007	1
28	748-04278-Z	BIELETTE DE DIRECTION	FINISH:MTD-SPEC-100015	1
28	748-04278ZW	BIELETTE DE DIRRECTION	FINISH:BLAU CHROMATIEREN	1

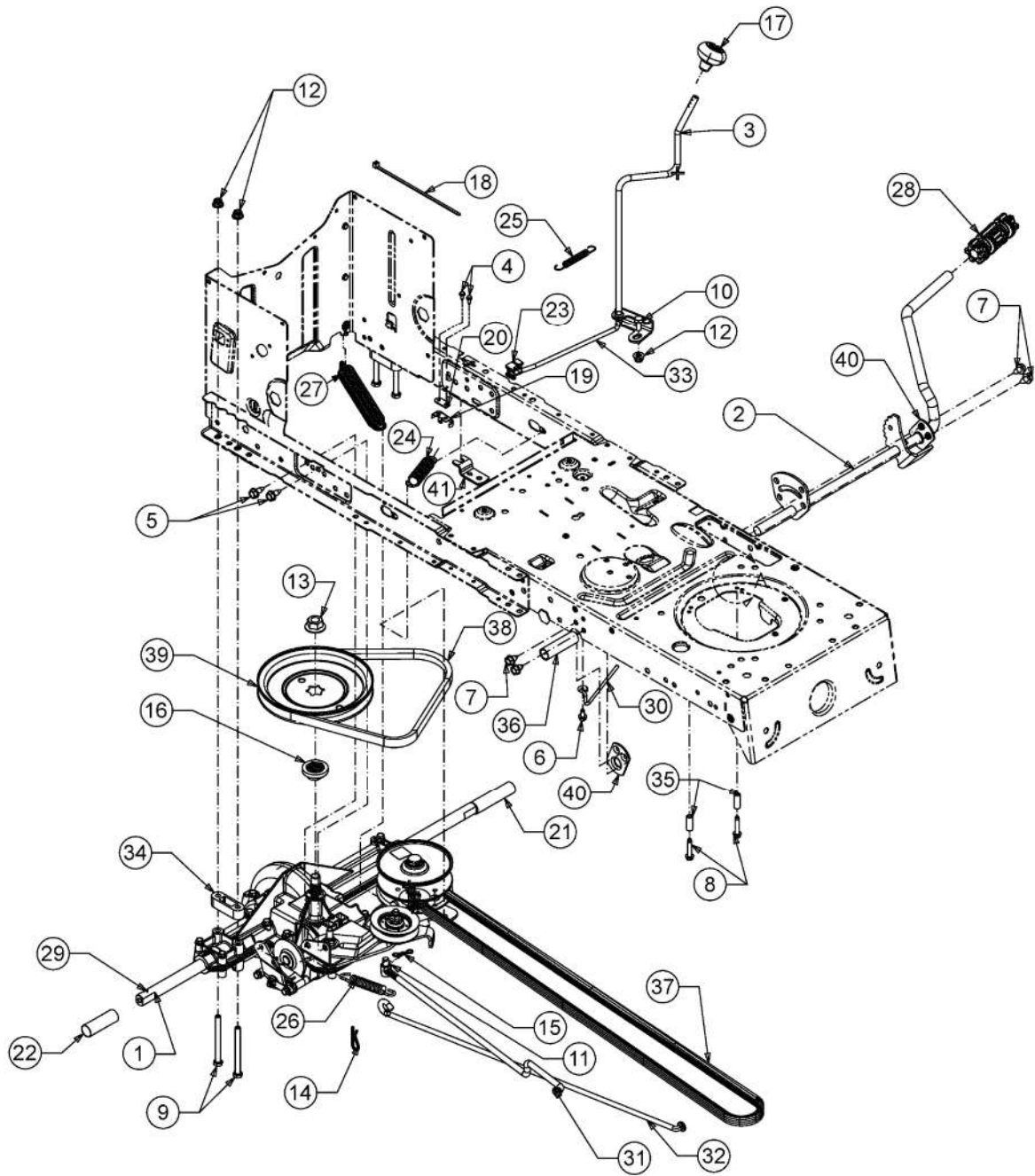




813-010305-00

# Volant

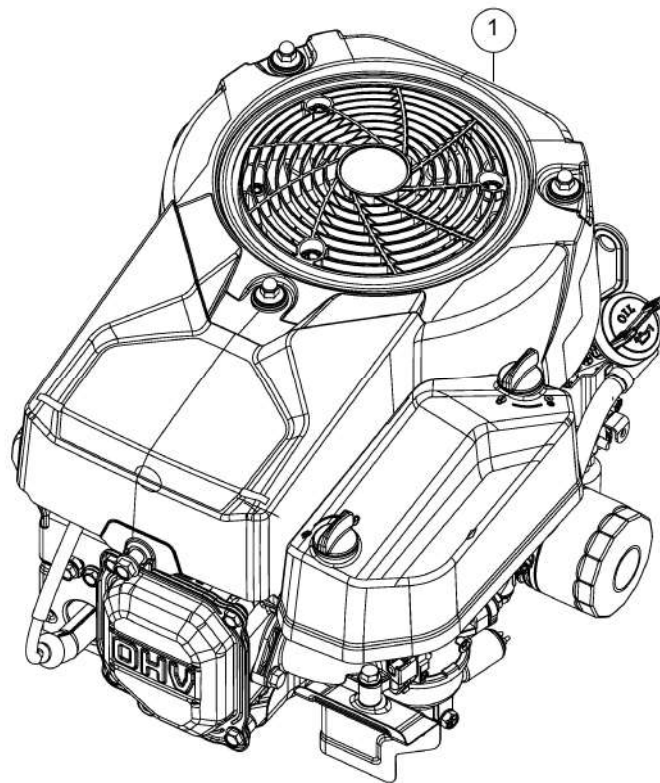
Fig.	No. Pièces	Désignation	Numero de la norme	Nbr.
1	631-04028	VOLANT	FINISH SCHWARZ	1
2	731-04681		FINISH: SCHWARZ NON CE	1



813-060886-20

# Entraînement de roulement, Courroie, Pedale

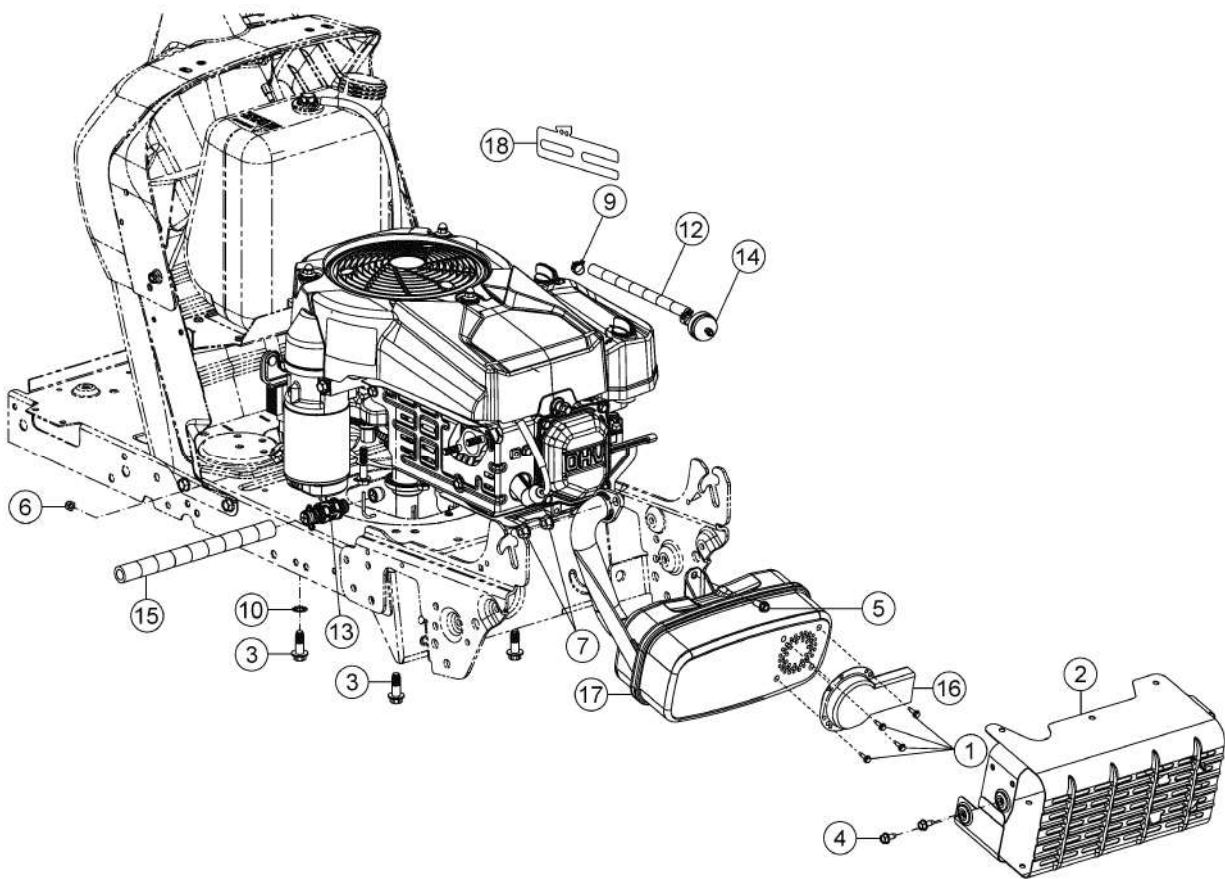
Fig.	No. Pièces	Désignation	Numero de la norme	Nbr.
1	618-04907C			1
2	647-04034E-S	PEDALE DE TRANSMISSION	647-04034E-S	1
3	647-04266B			1
4	710-0227	VIS	FINISH:MTD SPEC-100016 TYPE 1	2
5	710-04484	VIS HEX. TT:5/16-18:.750:HXIND	FINISH:MTD SPEC-100016 TYPE 1	2
6	710-0599	VIS A SIX PANS CREUX	FINISH:MTD SPEC-101617	1
7	710-0604A	VIS 5/16-18:0.625	FINISH:MTD SPEC-100016 TYPE 1	4
8	710-0809	VIS HEX. TT:1/4-20:1.250:HXIND	FINISH:MTD SPEC-100016 TYPE 1	2
9	710-1207	VIS	710-1207	4
10	710-3008	VIS 5/16-18:.75:GR5:STD	SPEC-701-01006 or.SPEC-100015	1
11	711-06103	FERRURE	FINISH:MTD SPEC-100015	1
12	712-04063	ECROU HEX. AVEC FLANC	FINISH:MTD SPEC-100015	5
13	712-0700	ECROU HEXAGONAL	SPEC-100015+WAX 912-0700	1
14	714-0209	GOUPILLE FENDUE	FINISH:SPEC 701-01006 914-0209	1
15	714-04040	GOUPILLE	FINISH:ASTM F1941 FE/ZN 3AN	1
16	718-04407	MOYEU: POULIE:5/8 DENTELURE	VERZAHNUNG	1
17	720-04028	POIGNEE INVERSEUR	FINISH:SCHWARZ	1
18	725-0157	COLLIER DE SERRAGE3/16X0.5X7.4	MATERIAL:NYLON-SCHWARZ	1
19	725-1644	INTERRUPTEUR DE S_CURIT_	FINISH:MTD SPEC-100015	1
20	726-0320	PLAQUE D'ISOLATION	FINISH:NATUR ODER SCHWARZ	1
21	731-04602	ENTRETOISE	FINISH:PP SCHWARZ	1
22	731-04604	ENTRETOISE	FINISH:PP SCHWARZ	1
23	731-27275			1
24	732-04306	RESSORT	FINISH:MTD STD 701-01006	1
25	732-04488	RESSORT DE TRACTION	FINISH:701-01006	1
26	732-0716D	RESSORT	FINISH:MTD STD 701-01006	1
27	732-08186			1
28	735-05051	CAOUTCHOUC DE PEDALE DE FREIN	FINISH:SCHWARZ SIEHE ZG.	1
30	747-04969	TRINGLE	FINISH:701-01006	1
31	747-05186	TRINGLE	FINISH:SPEC-100015	1
32	747-05188	TRINGLE DE FREIN	FINISH:701-01006 or E-COAT	1
33	747-05243	TRINGLE	FINISH:SPEC-100015	1
34	748-0334	ENTRETOISE	FINISH:GEILT	2
35	750-0566A	ENTRETOISE	FINISH:MTD SPEC-100015	2
36	750-0802	ENTRETOISE / .640IDX.760DX2.63	FINISH:KUNSTSTOFF SCHWARZ	1
37	754-04249A	COURROIE MOTEUR VARIATEUR	FINISH	1
38	754-05040	COURROIE VARIATEUR PONT	FINISH:MANUFACTURER SPECS.	1
39	756-04002	POULIE DE PONT	FINISH:SIEHE ZG. 956-04002	1
40	783-04536B-S	SUPPORT	SCHWARZ LACKIERT	2
41	783-04595A	SUPPORT DE LEVIER	FINISH:SPEC-100015	1



E3-11416A-01

# Moteur

Fig.	No. Pièces	Désignation	Numero de la norme		Nbr.
1	752Z7T90HW		MODELL#:7T90HW	STAGE V	1

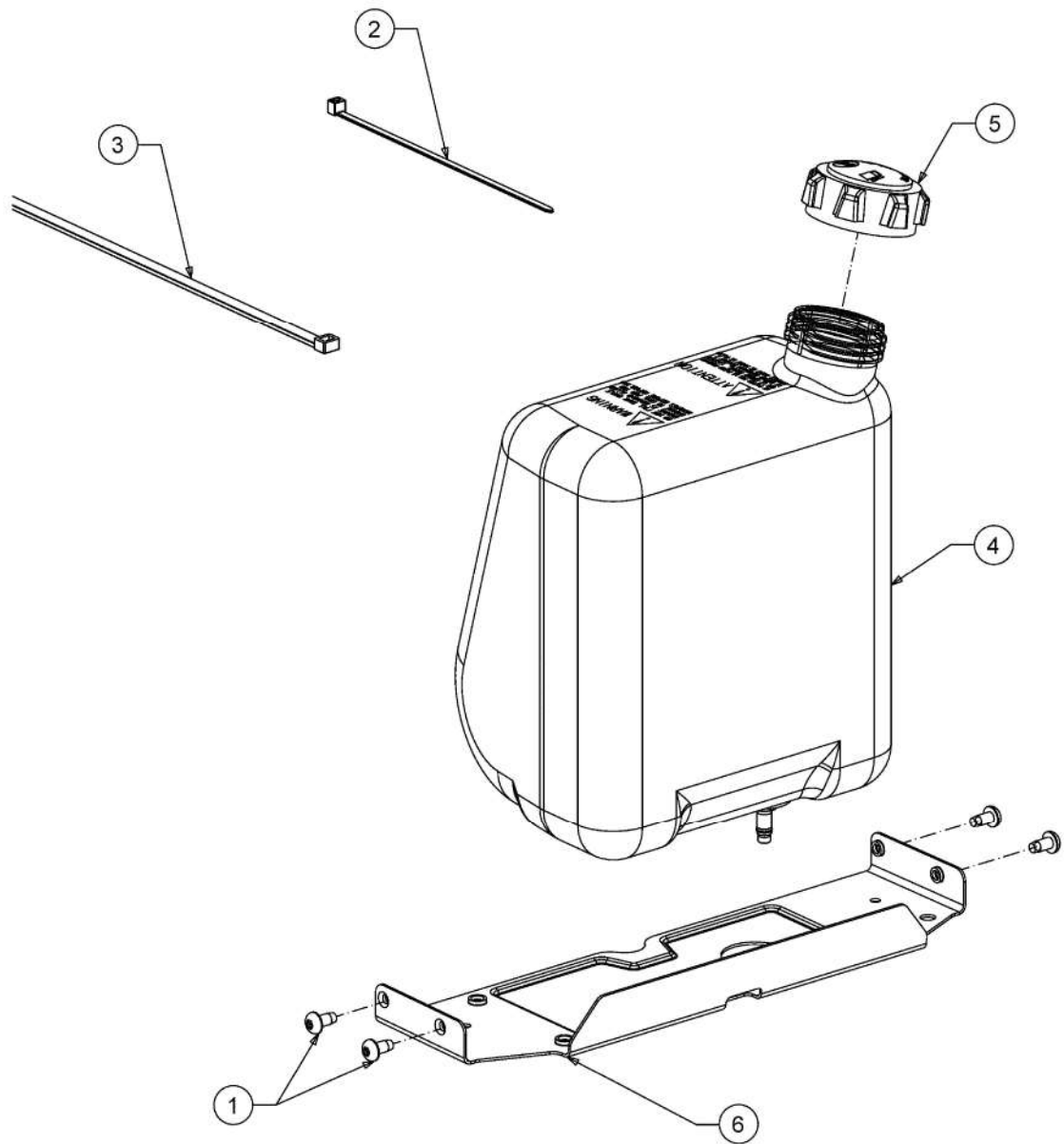


813-070789-00

## Accessoires moteur

Fig.	No. Pièces	Désignation	Numero de la norme	Nbr.
1	710-06625	VIS 8-32X0.47:HXWSH	FINISH:ASTM F1137 GRADE D	4
2	683-05460A-S	PROTECTION D ECHAPPEMENT NOIR	SCHWARZ	1
3	710-04683C	VIS	FINISH:SIEHE ZG.	4
4	710-0599	VIS A SIX PANS CREUX	FINISH:MTD SPEC-101617	4
5	710-0642	VIS1/4-20:0.750	SPEC-100016 TYPE 1 910-0642	1
6	712-0691	ECROU HEXAGONAL	MTD SPEC-100015 24.1426.14	1
7	712-3086	ECROU/FLANC: M8-1.25	FINISH:MTD SPEC-100015	2
9	726-0205	COLLIER DE SERRAGE DE BOYAU	FINISH:PHOS UND GELB LACKIERT	2
10	736-0148	RONDELLE	FINISH:MTD SPEC-100016	1
12	751-10349-54	TUYAU ESSENCE 54"	751-10349-54	7
13	751-10517A	DRAINAGE D <sub>2</sub> HUILE	FINISH:SIEHE ZG.	1
14	751-3013	FILTRE ESSENCE	COLOR:RED 951-3013	1
15	751-3141	TUYAU VIDANGE	13 X 3:FINISH KLAR METERWARE	9
16	751-11053B		LANGER ABGASKANAL:ALUMINIZED	1
17	751-15799A	POT D ECHAPPEMENT	751-15799A	1
18	783-06232-Z	SUPPORT	FINISH:VERZINKT	1

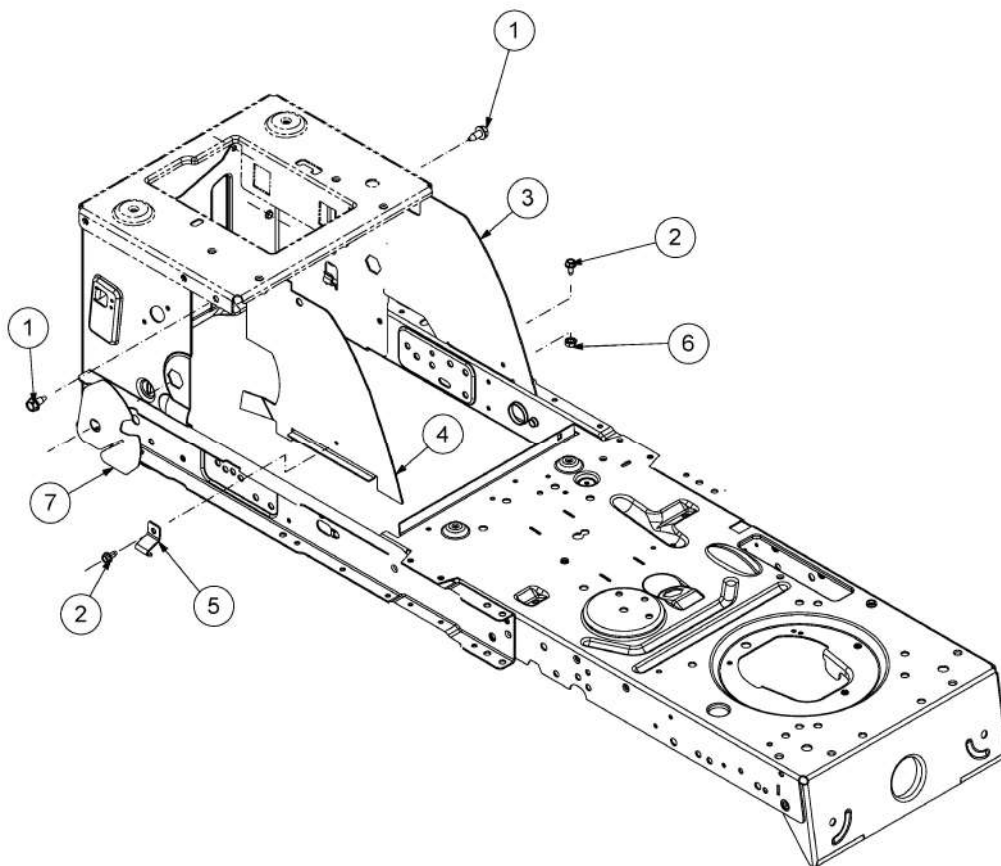




813-061066-06

# RÚservoir

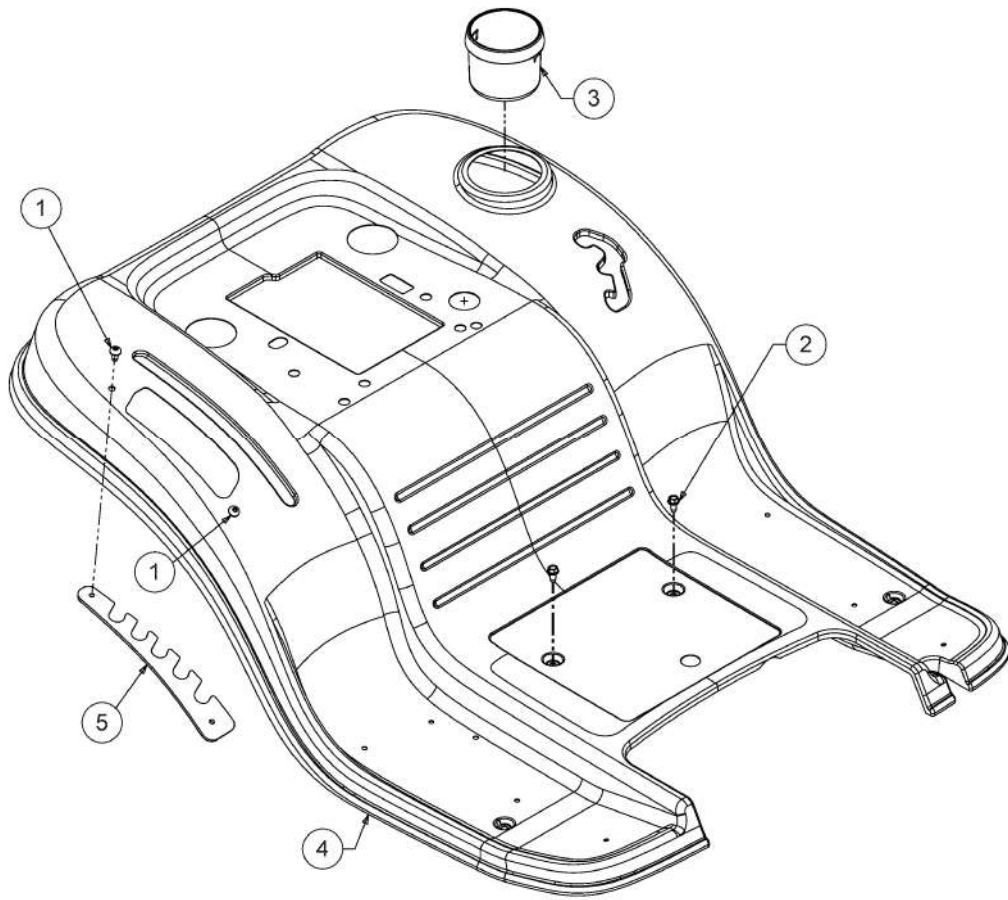
Fig.	No. Pièces	DÚsignation	Numero de la norme	Nbr.
1	710-05070A	VIS	FINISH: SCHWARZ SPEC-000087	4
2	725-0157	COLLIER DE SERRAGE 3/16X0.5X7.4	MATERIAL: NYLON-SCHWARZ	1
3	726-0230	COLLIER	FINISH: SCHWARZ	1
4	751-0555B	RESERVOIR D'ESSENCE: 5.7L	FINISH: NATUR	1
5	751-0603B	BOUCHON ESSENCE	FINISH: KUNSTSTOFF SCHWARZ	1
6	783-07083A-S	SUPPORT DE RESERVOIR ESSENCE	FINISH: LACKIERT MTD QUALIT-T	1



813-064116-04

## Couvertures Cadre

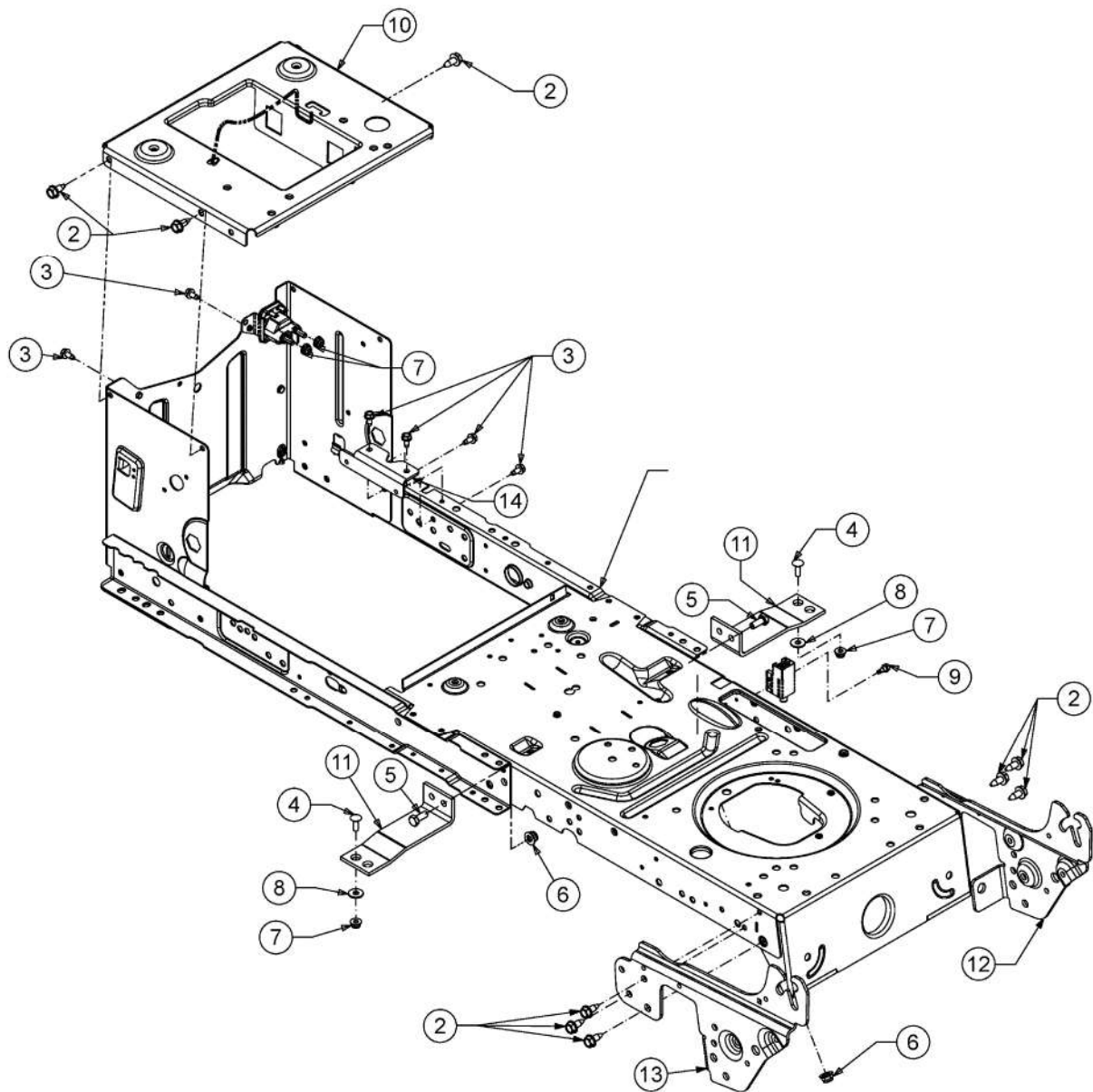
Fig.	No. Pièces	Désignation	Numero de la norme	Nbr.
1	710-04484	VIS HEX. TT:5/16-18:.750:HXIND	FINISH:MTD SPEC-100016 TYPE 1	2
2	710-0599	VIS A SIX PANS CREUX	FINISH:MTD SPEC-101617	2
3	783-10729637		SCHWARZ	1
4	783-13961637			1
5	783-05107	SUPPORT	FINISH:PLAIN / 783-05107-Z *	1
6	712-0271	ECROU 1/4-20"+ DISQUE DENTE	FINISH:MTD SPEC-100016 GR5	1
7	731-27444A			1



813-060295-12R

# Jupe

Fig.	No. Pièces	Désignation	Numero de la norme	Nbr.
1	710-05070A	VIS	FINISH: SCHWARZ SPEC-000087	2
2	710-0599	VIS A SIX PANS CREUX	FINISH: MTD SPEC-101617	2
3	731-04591A	PORTE GOBELET	FINISH: KUNSTSTOFF SCHWARZ	1
4	783-04587E-R	JUPE LT-5	MTD ROT	1
5	783-04843638		MTD ROT	1

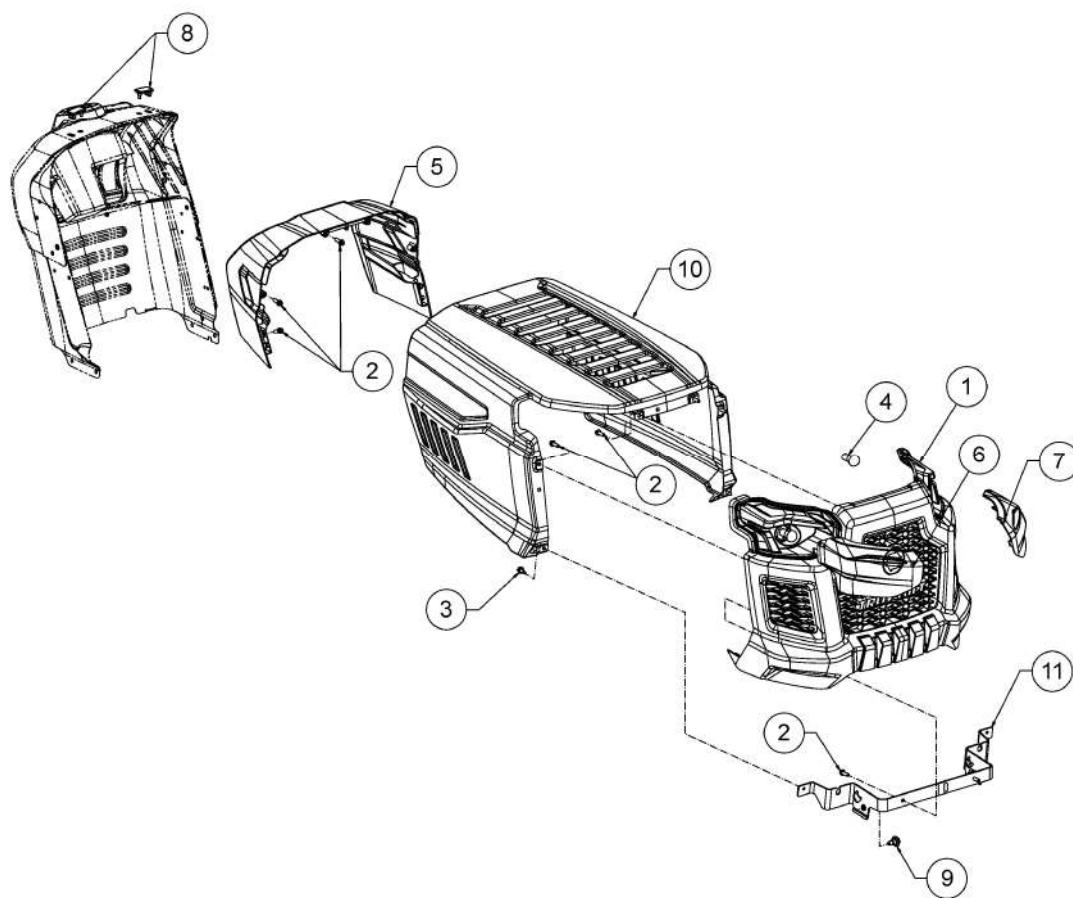


813-060906-25

# ChÔssis

Fig.	No. Pièces	DÚsignation	Numero de la norme	Nbr.
1	683-05139D-S			1
2	710-04484	VIS HEX. TT:5/16-18:.750:HXIND	FINISH:MTD SPEC-100016 TYPE 1	10
3	710-0599	VIS A SIX PANS CREUX	FINISH:MTD SPEC-101617	6
4	710-0703	VIS	FINISH:MTD SPEC-100015	2
5	710-3008	VIS 5/16-18:.75:GR5:STD	SPEC-701-01006 or.SPEC-100015	2
6	712-04063	ECROU HEX. AVEC FLANC	FINISH:MTD SPEC-100015	3
7	712-04064	ECROU HEXAGONAL	FINISH:SPEC-100015 912-04064	4
8	736-0173	RONDELLE 281DX 74ODX.063	FINISH:MTD SPEC-100015	2
9	738-04237A	AXE EPAULE	FINISH:MTD SPEC-100016	1
10	783-04548D-S	SUPPORT DE SIEGE	SCHWARZ	1
11	783-04637637	SUPPORT	SCHWARZ LACKIERT	2
12	783-05327B-S		FINISH:LACKIERT MTD QUALIT-T	1
13	783-05328B-S			1
14	783-05389A-S	SUPPORT	FINISH:LACKIERT MTD QUALIT-T	1

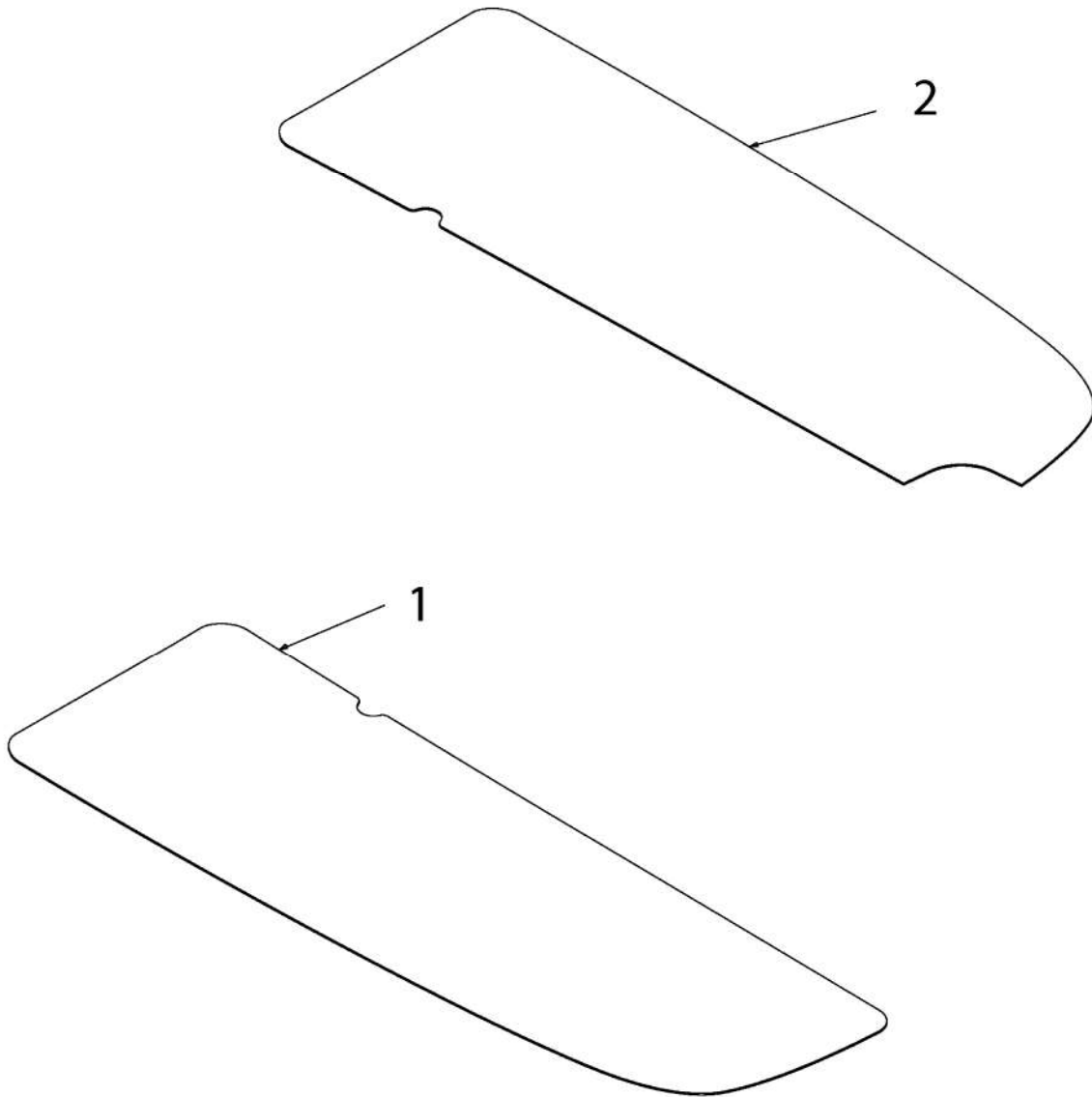




813-062321-06

## Capot de moteur

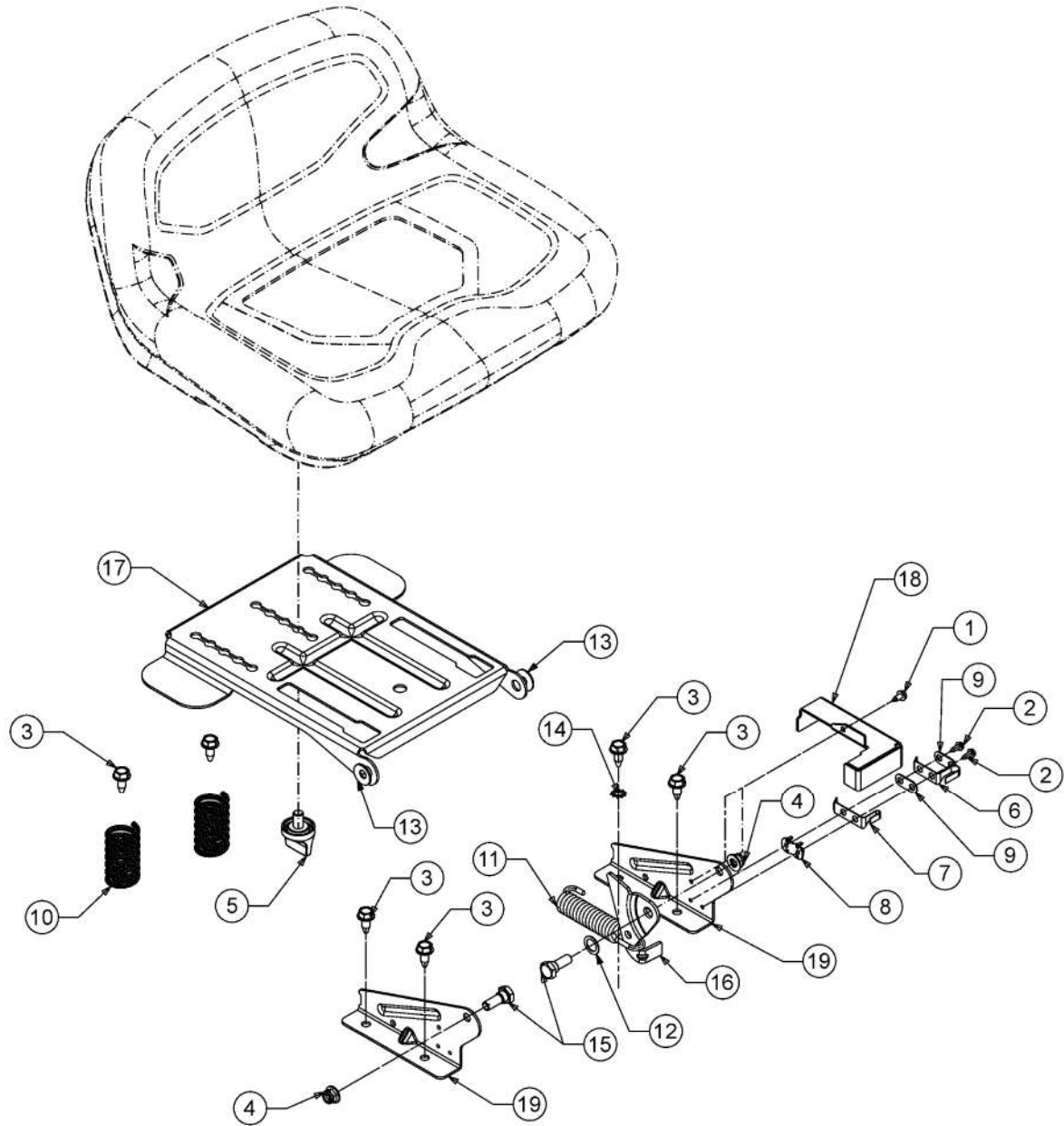
Fig.	No. Pièces	Désignation	Numero de la norme	Nbr.
1	631-05502			1
2	710-05108	VIS	FINISH:SPEC-701-01006	12
3	710-1652	VIS HEX. TT:1/4-20:.625:HXINDW	FINISH:MTD-SPEC-100016 TYPE 1	2
4	725-0963	AMPOULE ELECTRIQUE	FINISH:	2
5	731-12615			1
6	731-12657A			1
7	731-12661A			1
8	735-05199			2
9	738-04091A	VIS EPAULEE	FINISH:SPEC-100016	2
10	783-09469			1
11	783-09471			1



E3-02721A-01

## Marchepied garniture

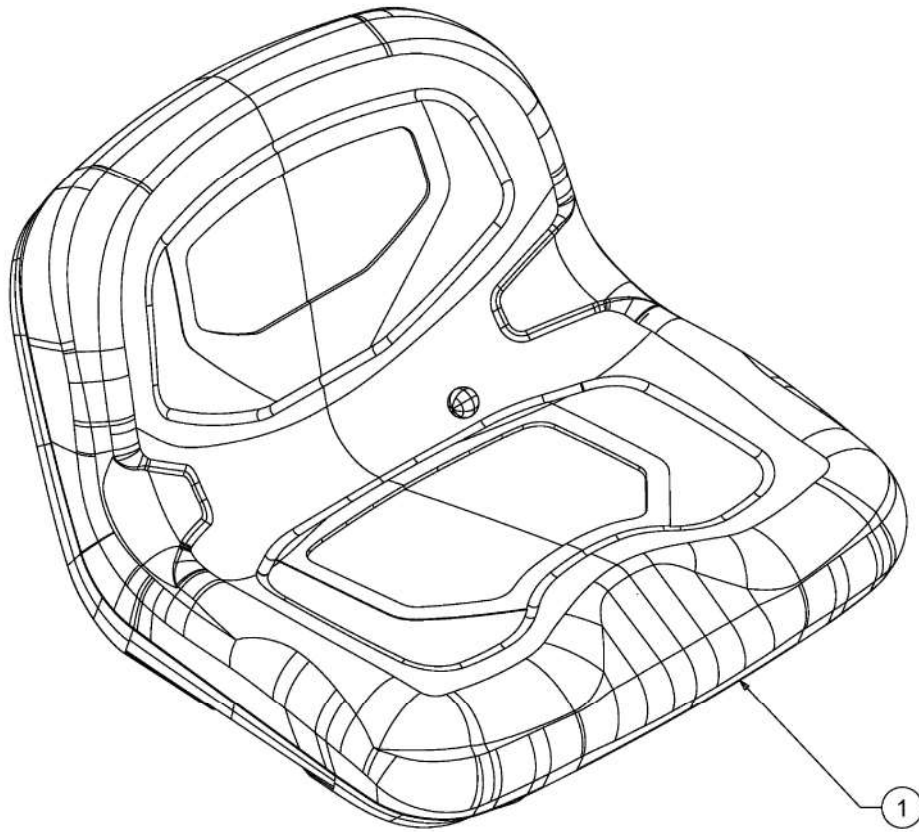
Fig.	No. Pièces	Désignation	Numero de la norme	Nbr.
1	723-04025	MARCHE PIED DROITE	FARBE: SCHWARZ	1
2	723-04026	MARCHE PIED GAUCHE	FARBE: SCHWARZ	1



813-070788-05

# RÚglage de siége

Fig.	No. Pièces	Désignation	Numero de la norme	Nbr.
1	710-0224	VIS PARK:#10-16:0.500:HXINDWSH	FINISH:MTD SPEC-100016 TYPE 1	1
2	710-0227	VIS	FINISH:MTD SPEC-100016 TYPE 1	2
3	710-04484	VIS HEX. TT:5/16-18.:750:HXIND	FINISH:MTD SPEC-100016 TYPE 1	6
4	712-04063	ECROU HEX. AVEC FLANC	FINISH:MTD SPEC-100015	2
5	720-05164		FINISH:SCHWARZ	1
6	725-1303	RESSORT DE SURETE SIÉGE	SI.-SCHALTER SITZ:SPEC-100015	1
7	725-1439	RESSORT SURETE DE SIEGE	SI.-SCHALTER SITZ:SPEC-100015	1
8	726-0278	PLAQUE D'ISOLATION	FINISH:NATUR ODER SCHWARZ	1
9	726-0279	PLAQUE D'ISOLATION	FINISH:NATUR ODER SCHWARZ	2
10	732-0735A	RESSORT DE SIEGE	FINISH:MTD SPEC 101616	2
11	732-08282	RESSORT	732-08282	1
12	736-0108	RONDELLE	FINISH:MTD SPEC-100015	1
13	736-0242	RONDELLE CONIQUE.340X.872X.060	FINISH:MTD SPEC-100016	2
14	736-0607	RONDELLE	FINISH:MTD SPEC-100016	1
15	738-0296	AXE EPAULE	FINISH:SPEC-100015	2
16	783-0209D	SUPP. SIÉGE	FINISH:SPEC-100016	1
17	783-04081D-S	PLAQUE DE SIEGE NOIRE	SCHWARZ	1
18	783-04877A-S	PROTECTION DE SECURITES DE	SCHWARZ / 788-0637	1
19	783-1489D637	SUPPORT DE SIEGE NOIR	SCHWARZ	2

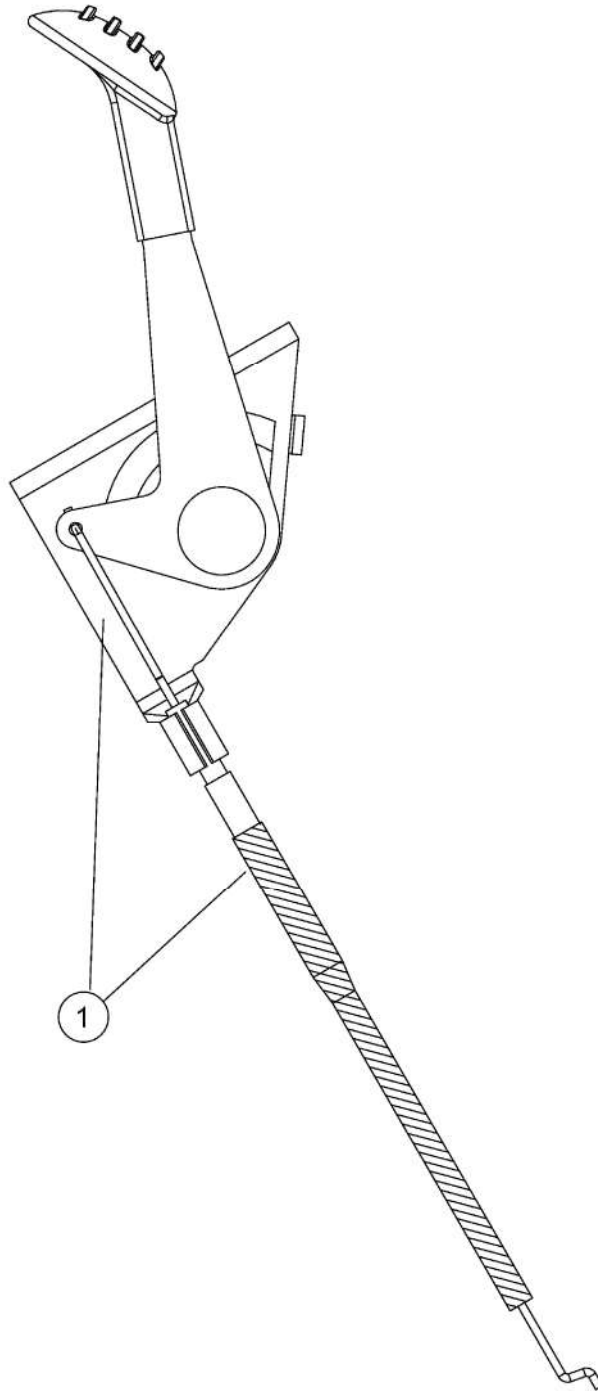


813-062983-00

# Siège

Fig.	No. Pièces	Désignation	Numero de la norme	Nbr.
1	757-05229	SIEGE	FARBE: SCHWARZ	1

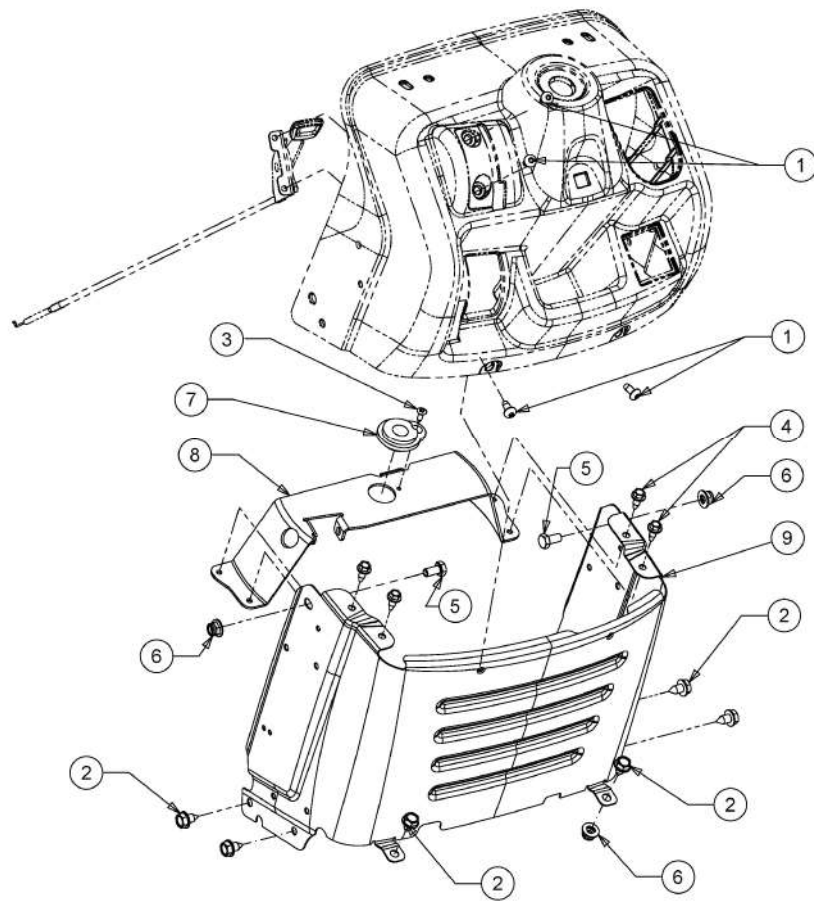




E3-11414A-01

## Cable de gaz

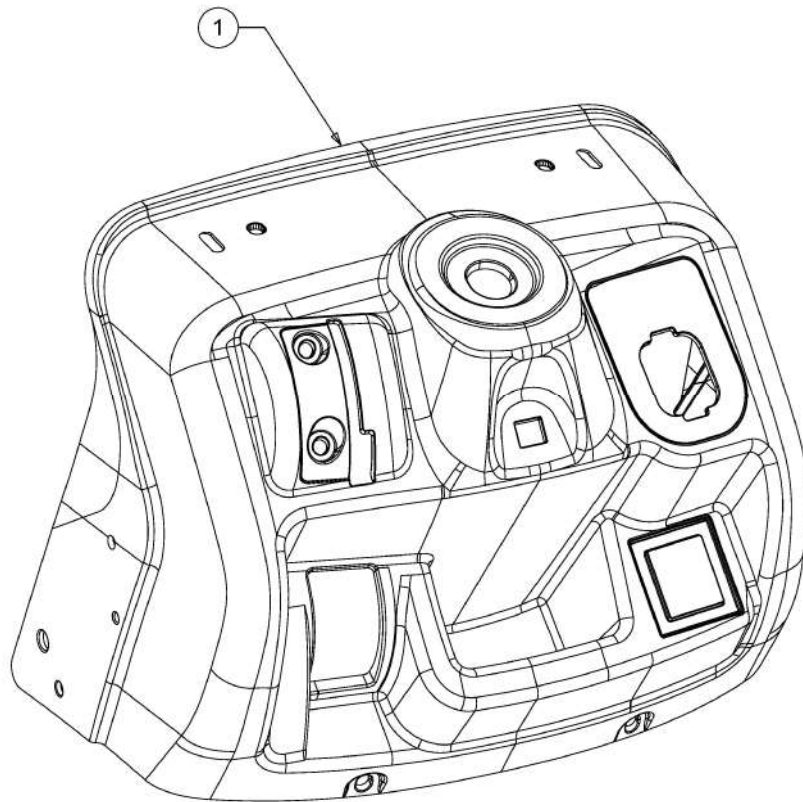
Fig.	No. Pièces	Désignation	Numero de la norme	Nbr.
1	746-05049A	CABLE GAZ	MIT BEDIENUNGSHEBEL	1



813-061151-11

## Tableau de bord

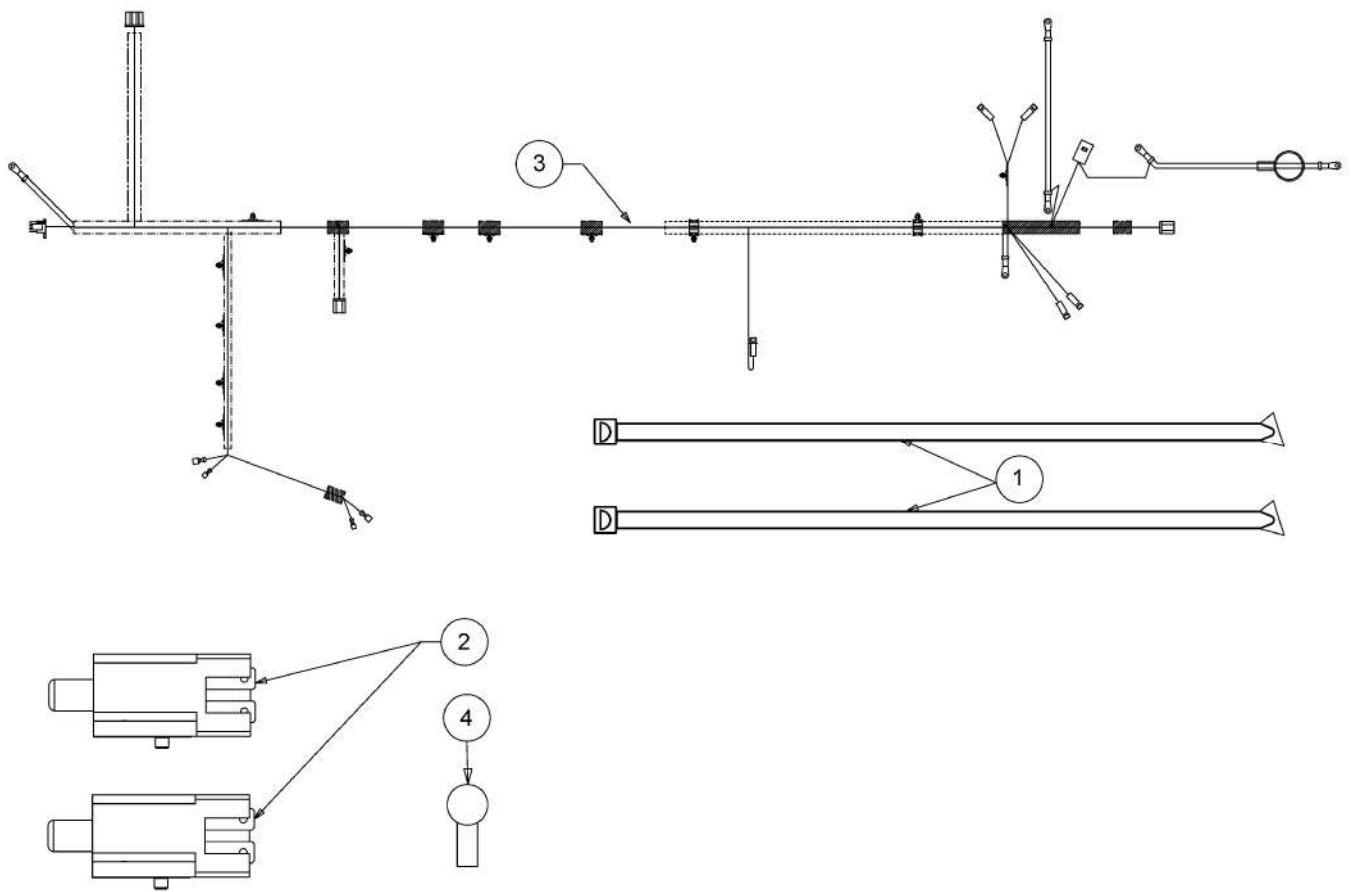
Fig.	No. Pièces	Désignation	Numero de la norme	Nbr.
1	710-05070A	VIS	FINISH: SCHWARZ SPEC-000087	4
2	710-0604A	VIS 5/16-18:0.625	FINISH: MTD SPEC-100016 TYPE 1	6
3	710-0837	VIS	FINISH: MTD SPEC-100016 TYPE 1	1
4	710-1652	VIS HEX. TT:1/4-20:.625:HXINDW	FINISH: MTD-SPEC-100016 TYPE 1	4
5	710-3025	VIS	FINISH: MTD SPEC-100015	2
6	712-04063	ECROU HEX. AVEC FLANC	FINISH: MTD SPEC-100015	4
7	741-0587	SUPPORT	FINISH: NATUR	1
8	783-06785C-S	SUPPORT TABLEAU DE BORD	SCHWARZ	1
9	783-06811F-S	TABLEAU DE BORD INFERIEUR		1



731-08542C-02

## Tableau de bord piPce supÚriure

Fig.	No. PiPces	DÚsignation	Numero de la norme	Nbr.
1	731-08542C	TABLEAU DE BORD	NRMC:FINISH KUNSTSTOFF SCHWARZ	1

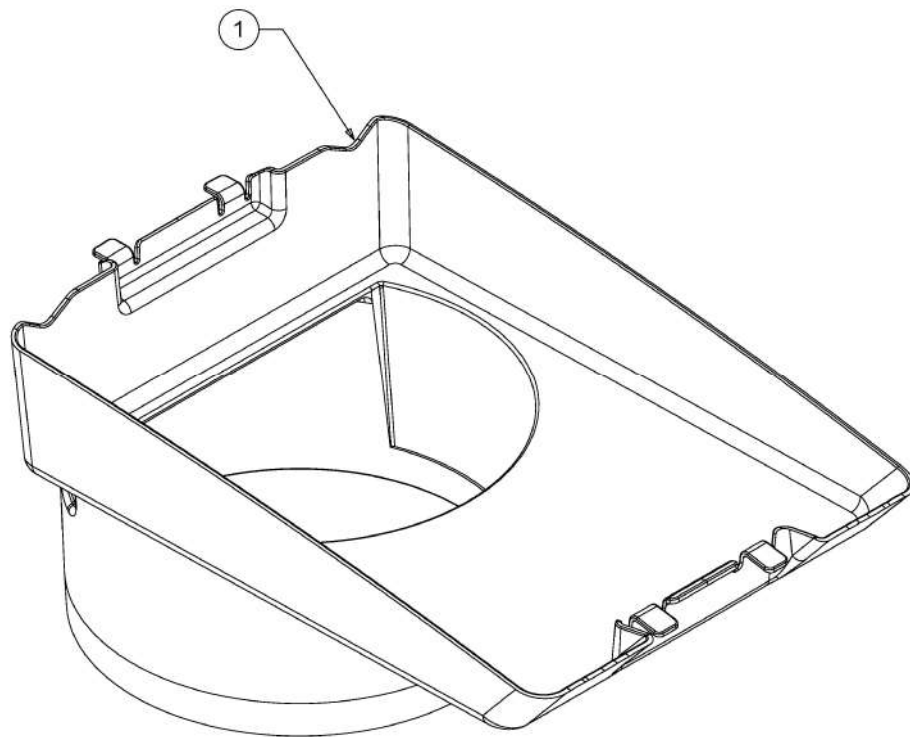


813-064062-01

# Assortiment Úlectrique

Fig.	No. PiPces	DÚsignation	Numero de la norme	Nbr.
1	725-0157	COLLIER DE SERRAGE3/16X0.5X7.4	MATERIAL:NYLON-SCHWARZ	4
2	725-04363	SECURITE EMBRAYAGE	FINISH:SIEHE ZG.	2
3	725-18163			1
4	725-3237	COUVERCLE POLE / ROUGE	BATTERIE FINISH:ROT	1

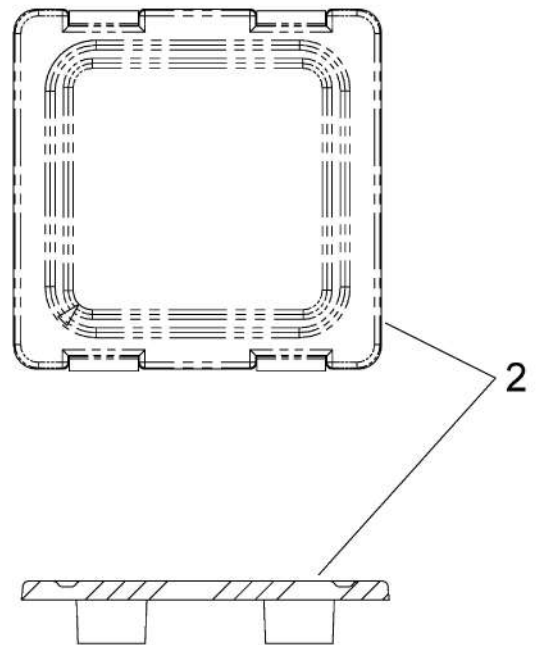
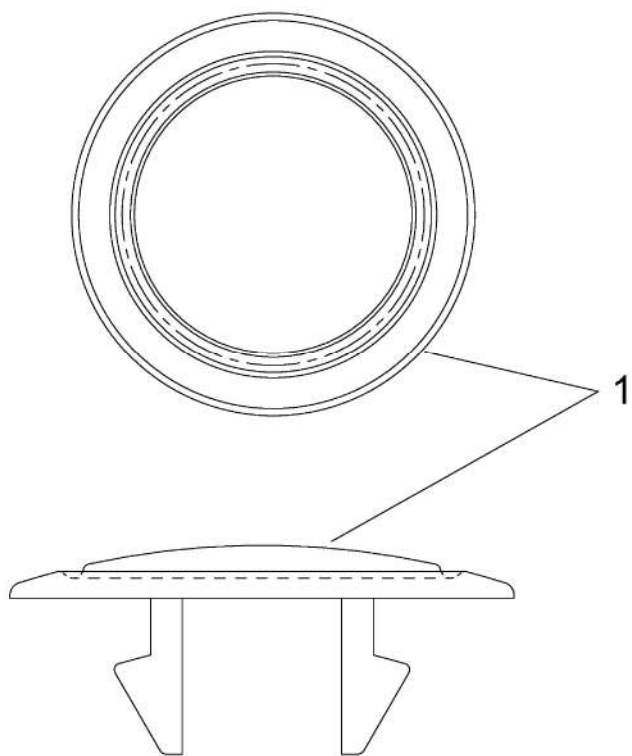




731-12705A-01

# Conduit air

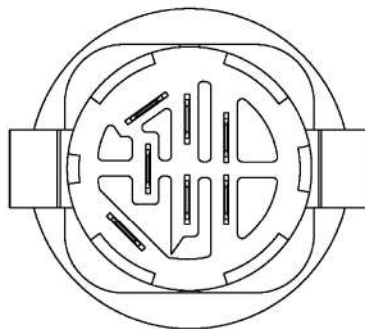
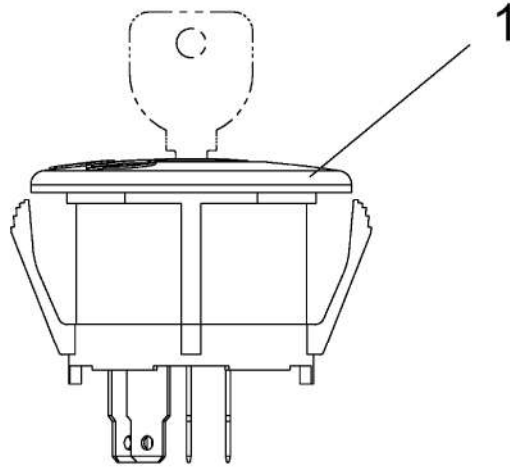
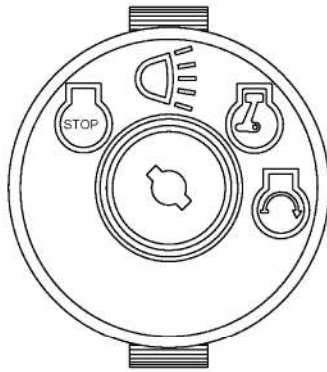
Fig.	No. Pièces	Désignation	Numero de la norme	Nbr.
1	731-12705A			1



E3-06862B-01

## Couvercle de protection du tableau de bord

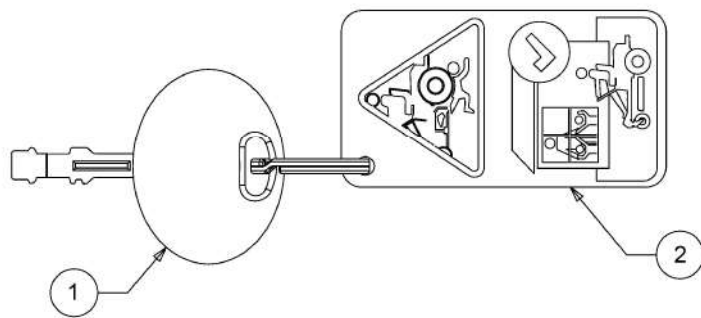
Fig.	No. Pièces	Désignation	Numero de la norme	Nbr.
1	731-05265		FINISH:SCHWARZ	1
2	731-05232	CACHE AMPERMETRE	FINISH:KUNSTSTOFF SCHWARZ	1



E3-04007A-01

# Contacteur

Fig.	No. Pièces	Désignation	Numero de la norme	Nbr.
1	725-1741	CONTACTEUR A CLE	FINISH: 925-1741	1

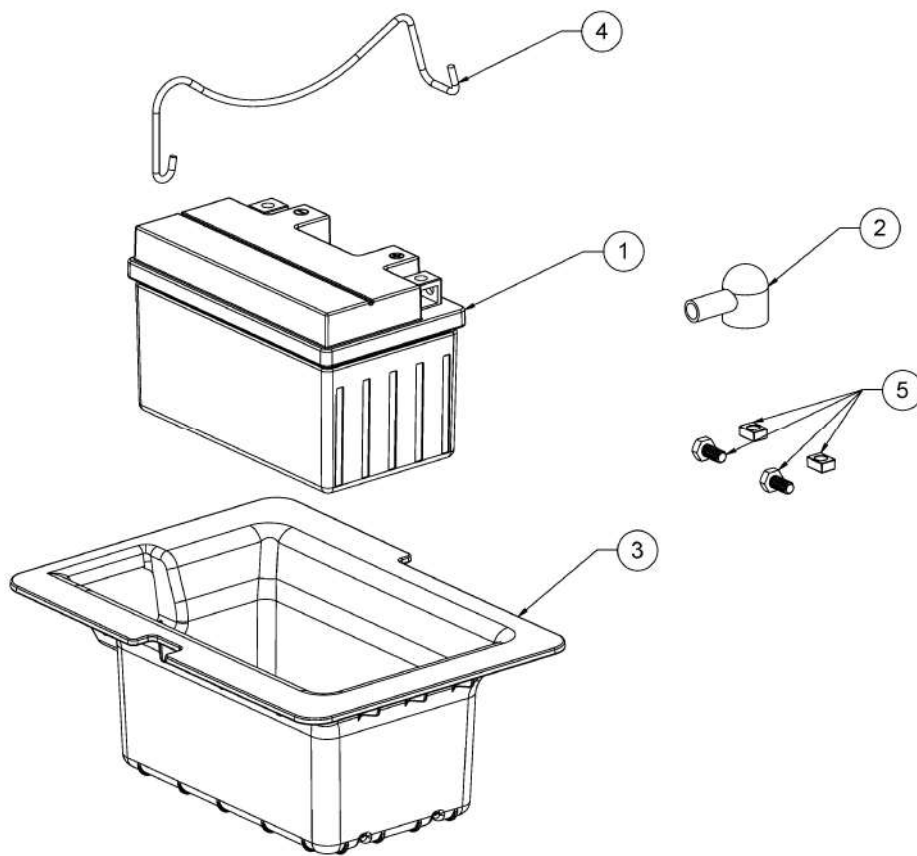


E3-10900A-01

# CIÚ

Fig.	No. Píeces	DÚsignation	Numero de la norme	Nbr.
1	725-1745A	CLE UNIVERSEL	FINISH:	1
2	731-19013			1





813-064058-02

# Batterie

Fig.	No. Pièces	Désignation	Numero de la norme		Nbr.
1	725-17136	BATTERIE AGM 7AH	725-17136		1
2	725-3237	COUVERCLE POLE / ROUGE	BATTERIE	FINISH:ROT	1
3	731-27025				1
4	747-11690				1
5	753-11253				1