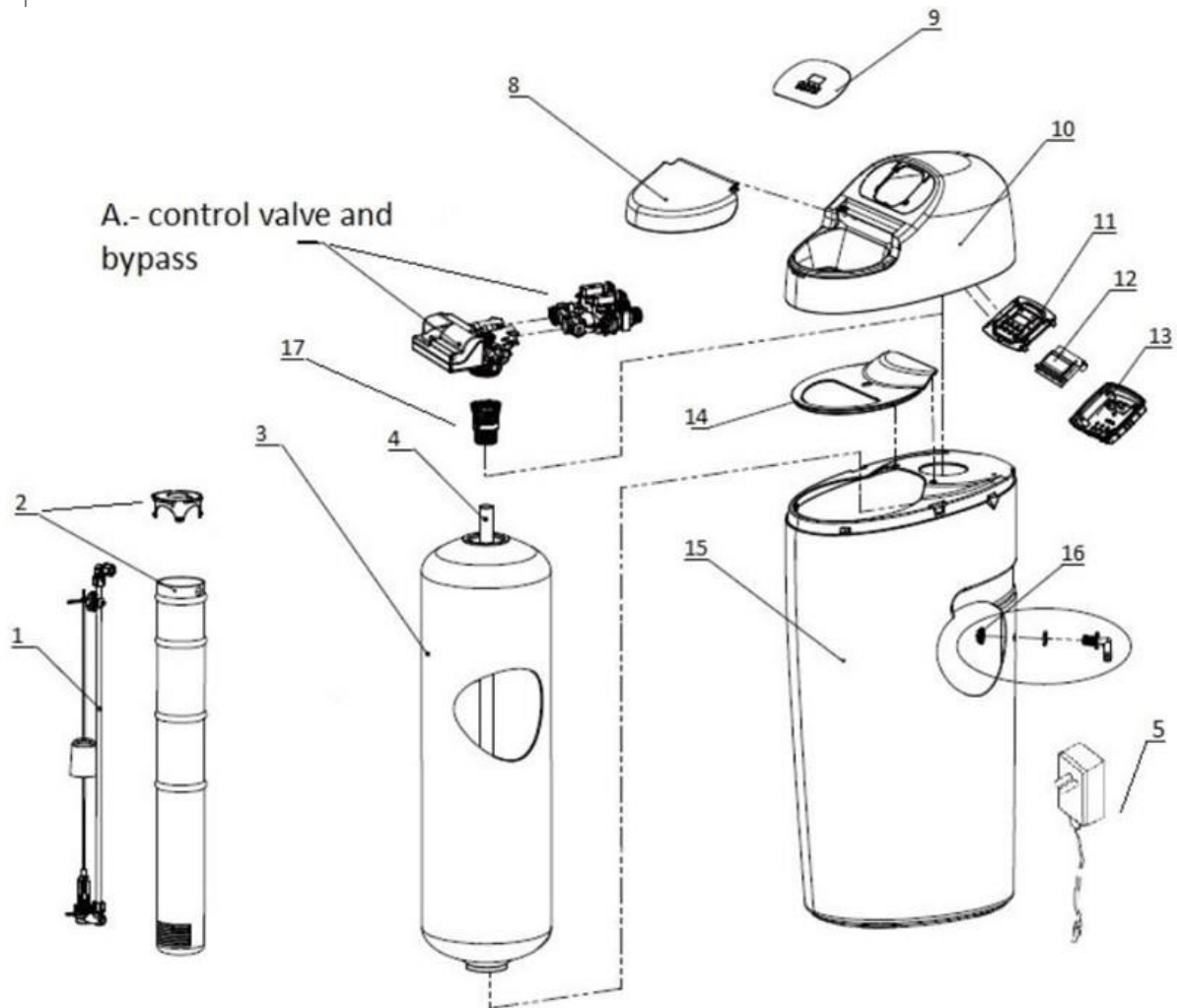


VALVE AND ACCESSORIES EXPLODED VIEW

GENERAL OVERVIEW

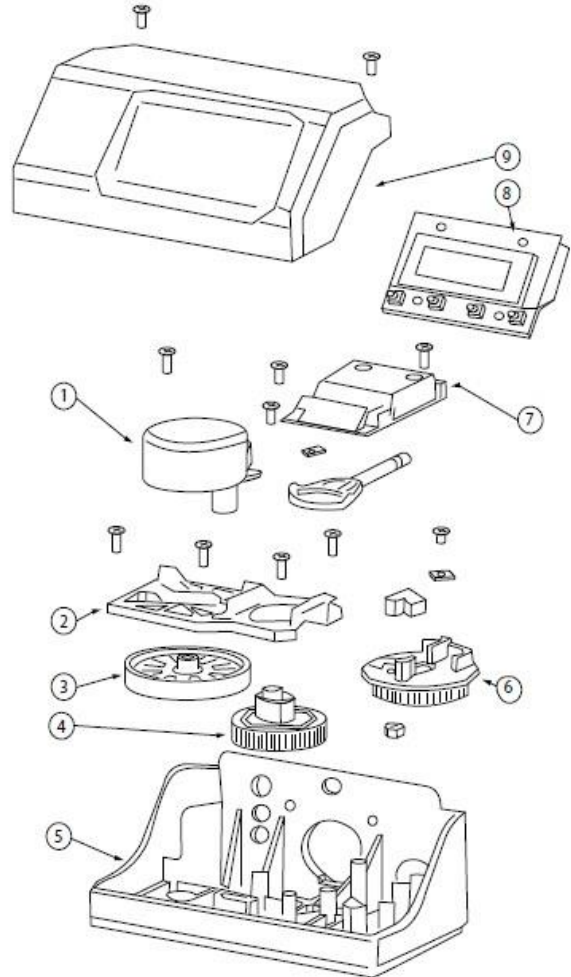
Pos	Code	Description
1		BRINE VALVE ASSEMBLY 30/18L 725MM, bullet type
2		0435 BRINE WELL WITH CAP
3		VESSEL TANK 10x35 39L TOP 2.5" GREY
4		CENTRAL TUBE WITH COLLECTOR 35"
5		TRANSFORMER 220-12VAC EU
6		TRANSFORMER 110V-12VAC US
7		TRANSFORMER 220-12VAC UK
8		SOFTENER SALT LID
9		CONTROLLER LABEL
10		SOFTENER COVER WHITE
11		CONTROLLER FRONT COVER WHITE
12		CONTROLLER DISPLAY PCB
13		CONTROLLER BACK COVER
14		SALT RESISTANT PLATE
15		SOFTENER CABINET WHITE
16		ELBOW BRINE TANK 3/8"
17		UPPER NOZZLE



VALVE AND ACCESSORIES EXPLODED VIEW

CONTROL VALVE AND BYPASS

Pos	Code	Description
1		ENGINE 12V
2		ENGINE SUPPORT
3		ENGINE GEAR
4		MAIN GEAR
5		PROGRAMMER SUPPORT
6		GEAR REGENERATION
7		ELECTRONIC CARD
8		ELECTRONIC DISPLAY
9		PROGRAMMING COVER



VALVE AND ACCESSORIES EXPLODED VIEW

CONTROL VALVE AND BYPASS

Pos	Code	Description
1		Piston kit
2		Gray injector kit
		Red injector kit
		White injector kit
3		Seals kit - Spacers
4		Mixing Valve
5		O-Ring BSP 23 x 3
6		Bypass input coupler
7		Bypass output coupler
8		Metal clip
9		Screw assembly
10		Connector clip BSP
11		Turbine
12		Turbine sensor
13		Complete bypass kit
14		Adapter 1/2" BSP
		Adapter elbow 1/2" BSP
		Adapter 3/4" BSP
		Adapter 1" BSP

Pos	Code	Description
15		Upper nozzle
16		Nozzle pipe o-ring
17		Tank top o-ring
18		Injector kit o-ring
19		Drain o-ring
20		Gray injector neck
		Red injector neck
		White injector nec
21		Injector screen
22		Injector nozzle grey
		Injector nozzle red
		Injector nozzle White
23		Flow limiter
24		Shaft brine valve
25		Drain elbow
26		O-ring BSP 23.6 X 2.65mm
		O-ring BSP 22.4 X 3.55 mm
27		O-ring BSP 27x3 mm

