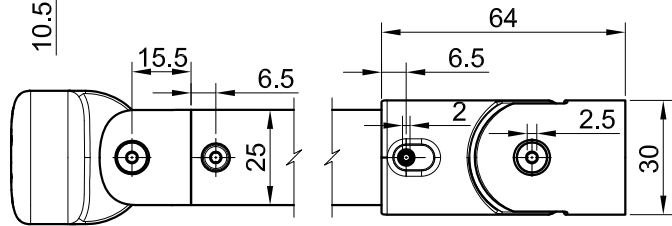
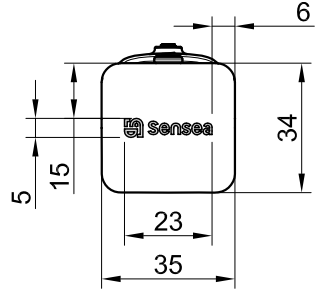
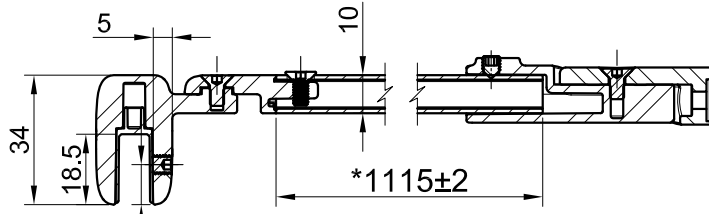
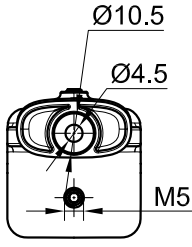
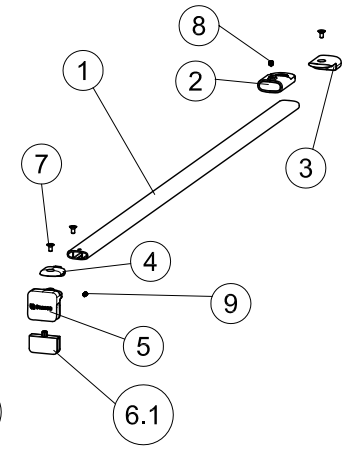
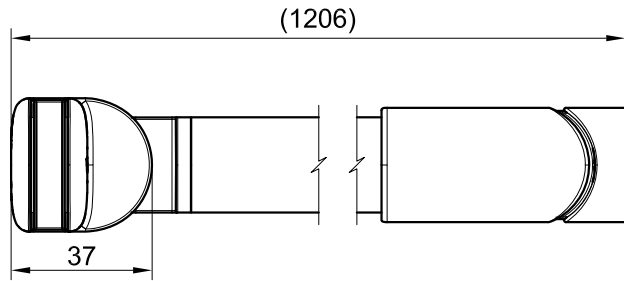


surface treatment	GH internal code
Bright silver	1441020
Brushed Gold	1441020GD
Matte black	1441020BL




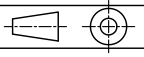
* : Dimensional control.
 () : Reference Dimension
 Rest of dimensions: See 3d file.

EAN CODE	ADEO KEY	GH code	GH internal code	Short product description
3276007811179	90702868	RESBCH	050PJ0371	UNIVERSAL SENSEA WALK-IN STABILIZER BAR 6-8 MM CHROME
3276007811155	90702866	RESBBG	050PJ0372	UNIVERSAL SENSEA WALK-IN STABILIZER BAR 6-8 MM GOLD
3276007811131	90702864	RESBBL	050PJ0373	UNIVERSAL SENSEA WALK-IN STABILIZER BAR 6-8 MM BLACK

No.	Description	Material	Surface treatment	Ref.
1	ALU TUBE	Aluminium	Bright silver	1441020
			Brushed brass	1441020GD
			Matte black	1441020BL
2	Connector part 1	Zinc alloy	Chrome	1441020
			Brushed Gold	1441020GD
			Matte black	1441020BL
3	Wall fixation part	Zinc alloy	Chrome	1441020
			Brushed Gold	1441020GD
			Matte black	1441020BL
4	Connector part 2	Zinc alloy	Chrome	1441020
			Brushed Gold	1441020GD
			Matte black	1441020BL
5	Glass fixation part	Zinc alloy	Chrome	1441020
			Brushed Gold	1441020GD
			Matte black	1441020BL
6.1	6mm Gasket	PE	Translucent	All suited
6.2	8mm Gasket	PE	Translucent	All suited
7	SCREW	SUS304	RAW	All suited
8	M5X6 SCREW	SUS304	RAW	All suited
9	M5X5 SCREW	SUS304	RAW	All suited

Requirments:

1. No obvious scratch;
2. No sharp edge, no powder on surface or inside;
3. Curvature less than 2mm;

D.L.M	DRAWN BY:	NAME: IAN	DATE: 28.12.2023	SIGNATURE:	 <small>This drawing is the exclusive property of ADEO. Any reproduction or use without the written permission of ADEO is prohibited.</small>	
	28.03.2024	CHECKED BY:	NAME:	DATE:		SIGNATURE:
		APPROVED BY:	NAME:	DATE:		SIGNATURE:
DESCRIPTION:		STABILIZER BAR			SYMMETRICAL:	FINISH:
REFERENCE:					SYMMETRICAL:	
TYPE OF SHEET:		MATERIAL:	RADIUS AGREEMENT: 0.3	WEIGHT:		
PIECE	PROFILE	SET	Aluminum	THICKNESS:	AREA:	ESCALE: FIT
			FAMILY:	VOLUME	in mm ³	TOT PERIMETER: