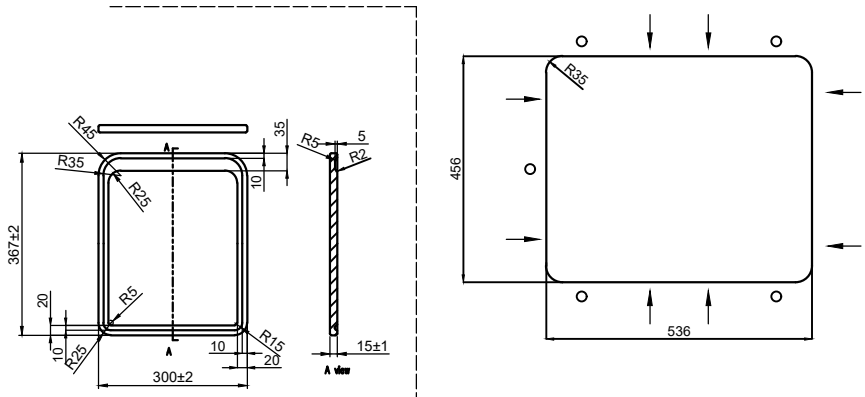


- 1.Pads must be installed aligned and centered on each face.
- 2.All dimensions in mm.
- 3.Pipes dimensions and tolerances as per NF-EN274-1-12-2002 and discharge pipes OD as per EN476:1997.
- 4.The flatness after assembly does not allow more than 1.0mm gap between the sink and the worktop in any points.

Matrix code	Ref	Designation	Material grade	Quantity	Weight(kg)	Dimension(mm)	Supplier Reference	Finishing Colour
2025R17P08-0032	1	Sink	SUS304	1	4.5	560*480*200	1113C	Silk

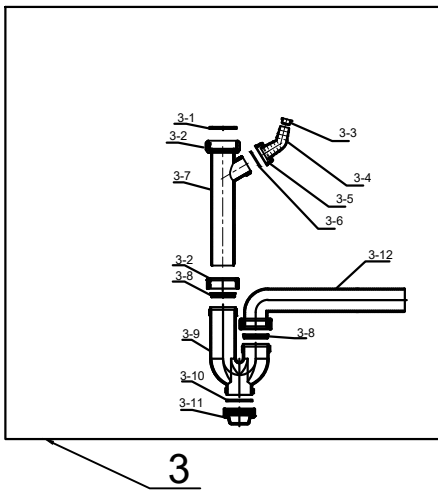
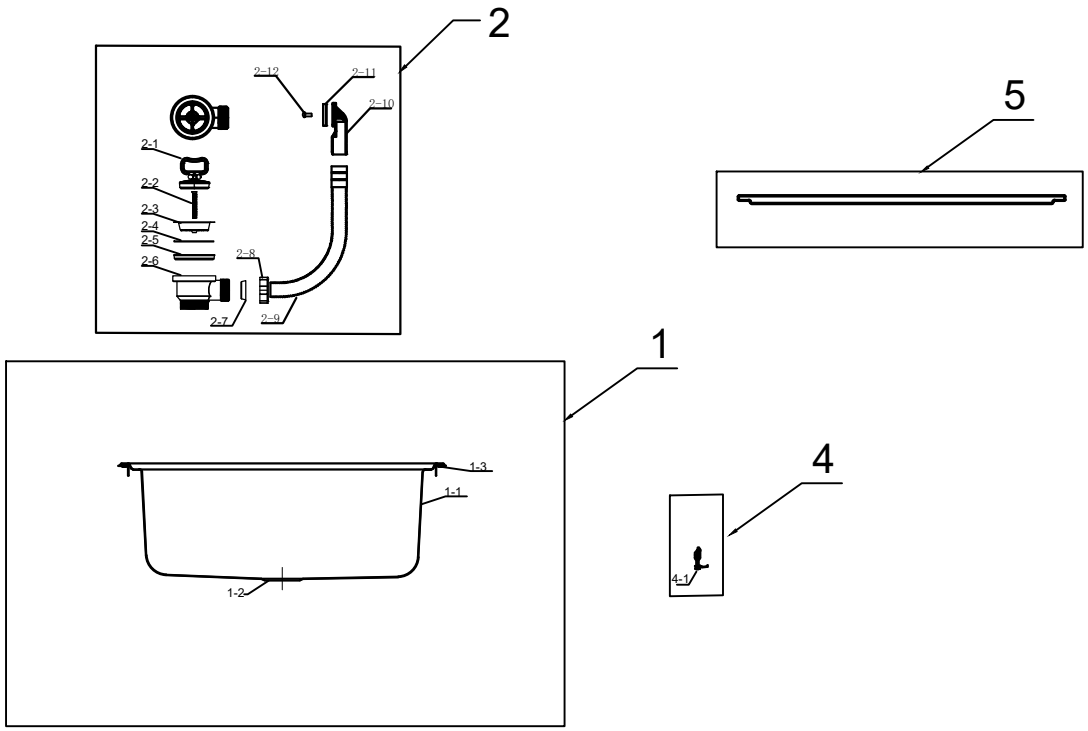
Following general tolerances are applicable to all dimensions without any tolerances indicated specifically on the drawing.

GB/T 1804 -C							
>0.5-3	>3-6	>6-30	>30-120	>120-400	>400-1000	>1000-2000	>2000-4000
±0.05	±0.3	±0.5	±0.8	±1.2	±2	±3	±4



Product/Serie designation (as per Synnertrade/Specs)				Material grade steel SUS304			
GENERAL DRAWING				Thickness of sheet 0.7mm			
2025R17P08-0032							
EAN (update when referencing is done)	3276007869798						
Format A3							
Scale 1:10							
Zuhai Dali Kitchen & Bathroom Technology CO.,Ltd.	V15	25/09/2024	Drawing creation	ShuyunSong		YYY	
Supplier Reference	1113C	Date	Update description	Done by		Checked by	

1 2 3 4 5 6



Ref	Designation	Material grade	Quantity	Weight(g)	Dimension(mm)	Finishings Colour
1	Sink	SUS304	1	2530	560*480*200	Silk
1-1	Sink	SUS304	1	2470	560*480*200	Silk
1-2	Noise reduction pad	Rubber	1	40	110*110*2	Black
1-3	Embedded seal	Polyurethane foam	1	20	2080	Black
2	Basket waste	SUS304+PP+PVC	1	136.5	φ74*300	Polished
2-1	Plug	PP	1	16.2	φ51*27	Polished
2-2	Screw	SUS304	1	5.7	M5*61.3	Stain
2-3	S/S bowl	SUS304	1	18.4	φ70*15	Black
2-4	Washer	EVA	1	0.1	φ68*1.5	White
2-5	Washer	PVC	1	10.9	φ71*9	Black
2-6	Plastic body	PP	1	35	φ74*52	White
2-7	O ring	PVC	1	2.7	φ33*8	Black
2-8	Screw	PP	1	5.8	φ43.5*15	Black
2-9	Overflow pipe	PE	1	21.7	φ26*330	White
2-10	Overflow connector	PP	1	13.6	89*64*22	White
2-11	Washer	PVC	1	4.6	59*35*6	Black
2-12	Screw	SUS304	1	1.8	M5*10	White
3	Siphon	PP+PVC+Silicon+TPE	1	246.8	φ40*480*389	White+Black
3-1	Sealing ring	PVC	1	1.1	φ45*2.5	Black
3-2	Screw	PP	3	27	φ55*17	White
3-3	Stopper	PP	1	0.8	φ17*9	White
3-4	Dishwasher connector	PP	1	7.5	φ30*60	White
3-5	Screw	PP	1	3.4	φ40*14	White
3-6	Sealing ring	Silicon	1	0.5	φ30*2	Black
3-7	Dishwasher connector	PP	1	51	φ40*150	White
3-8	Sealing ring	PP+TPE	2	3.8	φ45*6	Black+White
3-9	straight pipe	PP	1	57.5	φ40*148*100	White
3-10	Sealing ring	TPE	1	1.1	φ45*2.5	Black
3-11	Cover	PP	1	11.7	φ53*27	White
3-12	L shape pipe	PP	1	81.4	φ40*275	White
4	Mounting Hardware	Min steel+Fiber PA66 +A3 iron	1	82.4	45*24*18	silver
4-1	Hardware 1 28-38mm	Min steel+Fiber PA66 +A3 iron	8	82.4	45*24*18	silver
5	Chopping board	PEHD	1	1500	367*300*15	White

Matrix code	Ref	Designation	Material grade	Quantity	Weight(kg)	Dimension(mm)	Supplier Reference	Finishings Colour
2025R17P08-0032	1	Sink	SUS304	1	4.5	560*480*200	1113C	Silk

Following general tolerances are applicable to all dimensions without any tolerances indicated specifically on the drawing.		GB/T 1804 - C							
>0.5-3	>3-6	>6-30	>30-120	>120-400	>400-1000	>1000-2000	>2000-4000		
±0.05	±0.3	±0.5	±0.8	±1.2	±2	±3	±4		

Product/Serie designation (as per Synnertrade/Specs)		Material grade steel SUS304							
GENERAL DRAWING									Thickness of sheet 0.7mm
2025R17P08-0032									
EAN (update when referencing is done)	3276007869798								
Format A3									
Scale 1:8									
Zhuhai Daili Kitchen & Bathroom Technology CO., Ltd	V8	25/09/2024	Drawing creation					ShuyunSong	YYY
Supplier Reference	1113C	Date	Update description					Done by	Checked by

1 2 3 4 5 6

