

DREMEL® Woodworking Set

Holzbearbeitungsset
Kit de menuiserie
Комплект оборудования
для обработки древесины



Quick Start Guide Kurzanleitung Guide de démarrage rapide Краткое руководство пользователя

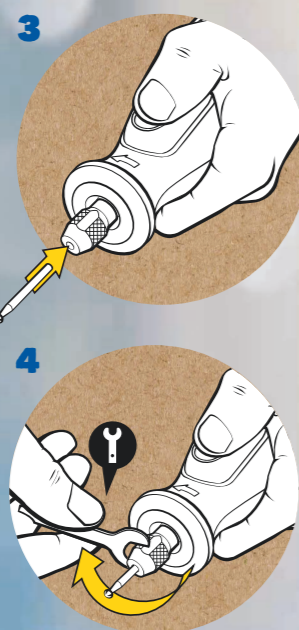
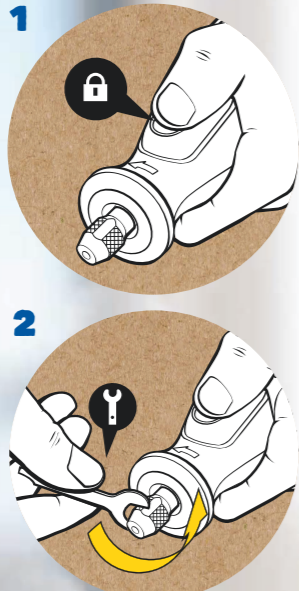
Bosch Power Tools B.V.
Konijnenberg 60
4825 BD Breda
The Netherlands



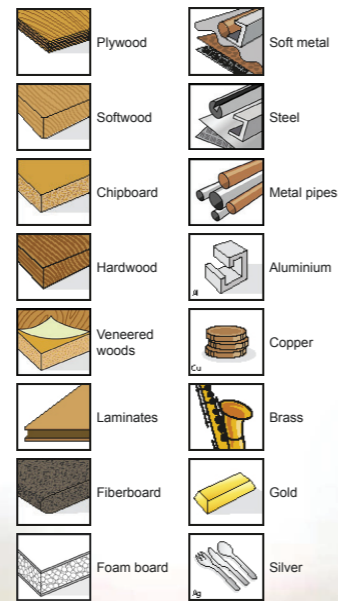
1600A01B1NAA

WWW.DREMEL.COM

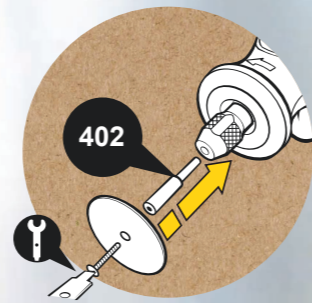
Place accessory / Zubehör
einsetzen / Placez l'accessoire /
Установите принадлежность



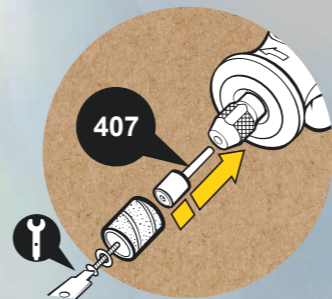
Materials / Material /
Matériaux / Материалы



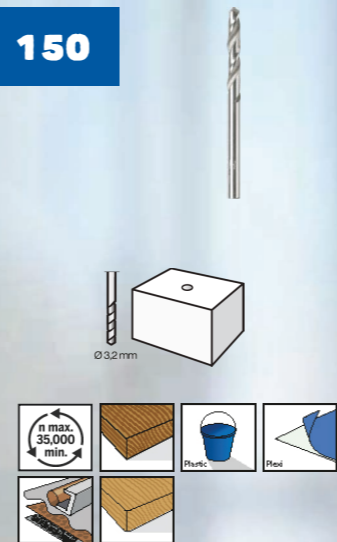
Place sanding disc
Schleifscheibe einsetzen
Placez le disque de ponçage
Установите шлифовальный диск



Place sanding band
Schleifband einsetzen
Placez la bande de ponçage
Установите шлифовальный барабан



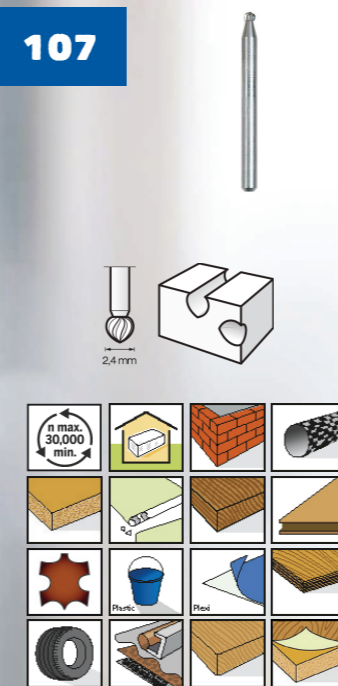
150



402



107



408



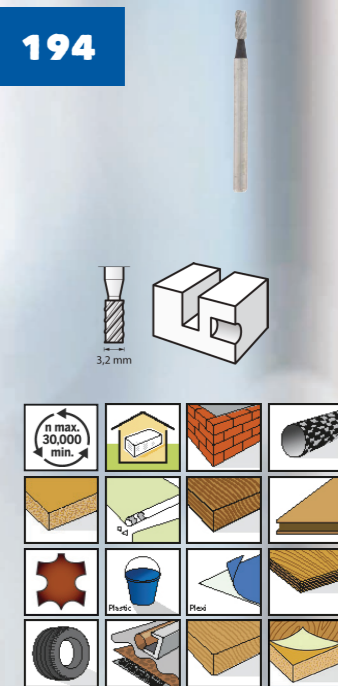
191



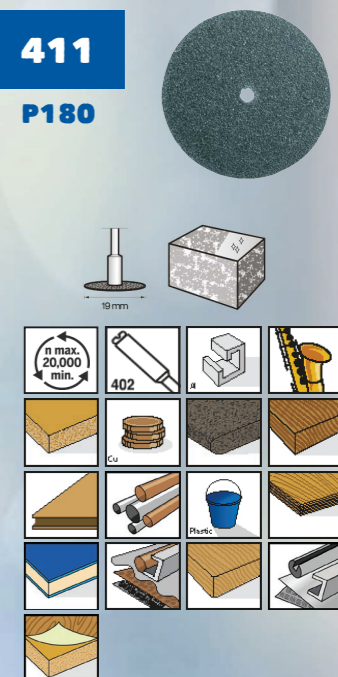
432



194



411





Insert Sheet

Description	1600A01B1N	
packaging construction	Insert	
Brand	Dremel	
Material group	Paper/Cardboard	
Density gsm (+/-10%)	103.6	70 #
Material	Text/Book	
Initial Length mm (+/-1)	457.2	18 inch
Initial Width mm (+/-1)	203.2	8 inch
Final Length mm (+/-1)	57.2	2.25 inch
Final Width mm (+/-1)	101.6	4 inch
Converting 1	Printed	
Converting 2	Folded	
Printing process	Litho	
Qty. printing colors frontside	5	
Qty. printing colors backside	5	
Printing colors frontside	CMYK + PMS 286	
Printing colors backside	CMYK + PMS 286	
Varnish frontside	none	
Varnish backside	none	
Hanger	NA	
Completion	Accord. to delivery rule Bosch	
Packaging location	Mexicali	
Owner	PT-RT/MKP1	
Quantity per FG	1	
Notes		
EAU		
	2019: 15,000	
	2020: 20,000	

1600A01B1N	Instruction manual	AA	6035A06G9X	2018-11-05	MOB1MEX	511	DV	--	MUL	3 / 3
SNR	Term	Ind.	CRNo.	Valid	Release	BWN	DocType	CritP.	DP	Page / of