

10. Vervollständigen Sie Ihre Installation

Vervollständigen Sie Ihre Installation mit DiO-Lösungen zur Steuerung Ihrer Beleuchtung, Ihrer Rolläden, Ihres Gartens oder auch zur Visualisierung des Geschehens zu Hause mit Videoüberwachung. Einfach, qualitativ hochwertig, skalierbar und wirtschaftlich, entdecken Sie alle DiO Connected Home Lösungen auf www.diohome.com.

EN - DiO wireless switch and lighting module kit (433 / Zigbee / BLE)

1. Installing the lighting module

This product must be installed in accordance with installation rules and preferably by a qualified electrician. Improper installation and/or use may result in the risk of electric shock or fire.

!!! Switch off the power supply before carrying out any work. !!!

1.1 Connect the module behind a mechanical switch (push button or toggle)

- Remove your mechanical switch.
- Strip the wires of about 7 mm to have a good contact surface.
- Connect the AC 230V phase (brown or red) to the LIn terminal of the module and the neutral wire (blue) from the electrical panel to terminal N2.
- Connect the cable from the bulb (brown or red) to the LOut terminal of the module and the neutral (blue) to the bulb at terminal N1.
- Connect your switch to terminal S1 and S2.

Fig.1

Note: If your installation does not include the neutral conductor behind the switch, you must install the module at the lamp.

1.2 Connect the module to the lamp

- Remove the AC 230V phase and neutral that are connected to your lamp.
- Connect the module to the power supply by connecting the AC phase (brown or red) to the LIn terminal, and the neutral wire to the N2 terminal.
- Connect the phase to the lamp (brown or red) to the LOut terminal and the neutral wire to the N1 terminal.

Fig.2

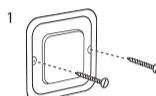
2. Install the wireless switch

Open the small compartment on the back of the switch and remove the tab on the battery.

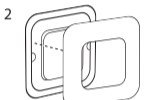
2.1 Installing the unit

You have two options:

- Use the supplied double-sided adhesives to attach the wireless switch on the wall, making sure the LED on the switch is facing up.



- Use small screws (not included). For this option, remove the wireless switch frame and place the 2 screws into the slot, making sure the LED is at the top of the switch. Then replace the frame.

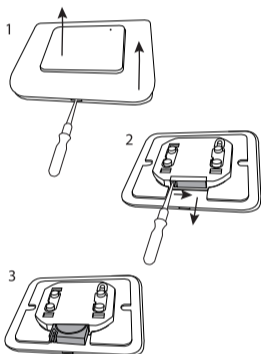


2.2 Changing the battery

The switch LED will become dim when battery is low.

To change the battery :

- Remove the front frame and faceplate of the switch
- Using a small flat screwdriver, remove the battery compartment by pressing the small notch inwards while pulling downwards.
- Replace the old battery with a new CR2032 - 3V type, making sure to place it with the + side facing up.
- Replace the battery compartment, faceplate and the front frame until you hear a click.



3. Link the module to a remote control or a DiO 1.0 sensor

The DiO Light Module is compatible with all DiO 1.0 controls: remote controls, switches and wireless sensors.

3.1 Connecting the DiO light module to a DiO 1.0 controller

- Connect the module and bring the DiO 1.0 remote control close to the light module.
- Press the learning button on the DiO Module for 5 seconds, the LED starts to flash slowly.
- Within 20 seconds, press the 'ON' button on the remote control, wireless switch or DiO 1.0 sensor, the LED on the module flashes rapidly for 1 sec to confirm the association.

Fig.3

Warning: If you do not press the 'ON' button on your control unit within 20 seconds, the module will exit learning mode; you must go back to point 4.1 for the association.

The DiO Module can be linked to up to 6 different DiO commands. If the memory is full, you will not be able to install a 7th command, see section 4.2 to delete a command.

3.2 Deleting a DiO 1.0 command

- Bring the DiO 1.0 Remote Control close to the Light Module.
- Press the learning button on the DiO Module for 5 seconds, the LED starts to flash slowly.
- Press the 'OFF' button on the DiO 1.0 remote control to be deleted, the LED on the module will flash rapidly for 1 sec to confirm

4. Add the module to the application via Bluetooth

4.1 Create your DiO One account

- Download the free DiO One app from the iOS App Store or Google Play for Android.
- Create an account by following the instructions on the app.

Note: Also compatible with the "My Chacon" app.

4.2 Connect the lighting module to your smartphone

- Make sure the DiO Module is within range of your smartphone and that Bluetooth is enabled on your smartphone.
- In the app, select "My Devices" and press "+".
- Select "Home automation" and then "DiO lighting module".
- Follow the installation assistant on the application.

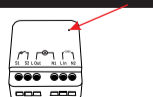
5. Add the module to the application via a Zigbee 3.0 controller

You can link your lighting module to a Zigbee 3.0 home automation system, to integrate it into your existing Zigbee 3.0 ecosystem.

Press the module's learning button for 5 seconds, the LED will start flashing slowly. Then, follow the instructions of your Zigbee central controller to add the module.

6. Reset

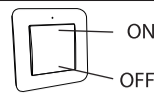
To restore the lighting module to its factory settings: Press the central button for 12 seconds. The LED on the module flashes rapidly for 2 seconds to confirm the reset.



7. Operation

With the DiO remote control/switch:

- Press the "ON" ("OFF") button on your DiO control to turn the lights on/off.



With your smartphone, via DiO One:

- Turn on/off (make sure the module is within Bluetooth range of your smartphone).
- Create a programmable timer: set your lights to turn on or off by the minute.
- Presence simulation: select the duration of absence and the periods of operation, the switch opens or closes randomly to protect your home.

Note: Programs created via your smartphone will always be active, even if your smartphone's Bluetooth is not in range.

8. Problem solving

- The light does not turn on/off with the DiO switch or remote control:
 - Check that your module is well connected to the electrical current.
 - Check the polarity and/or the exhaustion of the batteries of your control.
 - Check that the memory of your module is not full, the module can be linked to up to 6 DiO commands (remote control, switch and/or detector).
 - Make sure the switch or remote control is within reach of the module.

- The wireless module or switch does not appear in the application interface:
 - Check that the module is within range of your smartphone and that Bluetooth is enabled on your smartphone.

Important: A minimum distance of 1-2m is required between two DiO receivers (module and/or outlet). The range between the module and the DiO switch may be reduced by thick walls or an existing wireless environment.

9. Technical data

55855 - lighting module

- Protocol and frequency
 - 433,92 MHz by DiO
 - Zigbee 3.0 - 2,4Ghz
 - Bluetooth Low Energy 5.0
- Maximum power: 0,7 mW ERP
- Range with DiO 1.0 control: 50m (free field)
- Max. 6 associated DiO 1.0 transmitters
- Operating temperature: 0° à + 35°C
- Power supply: 220 - 240 V - 50Hz
- Max. : 1000W
- Dimensions : 43 x 41 x 22 mm

54717 - wireless switch

- Protocol: DiO 1.0
- Frequency: 433,92 MHz
- Max transmitted radio frequency power: <20 mW
- Operating temperature: -10 to 35°C
- Transmission range: 50 m (in free field)
- Lithium battery: CR2032 3V (included)
- Number of channels: 1
- Dimensions: 86 x 85 x 13 mm

Indoor use (IP20), do not use in humid environments.

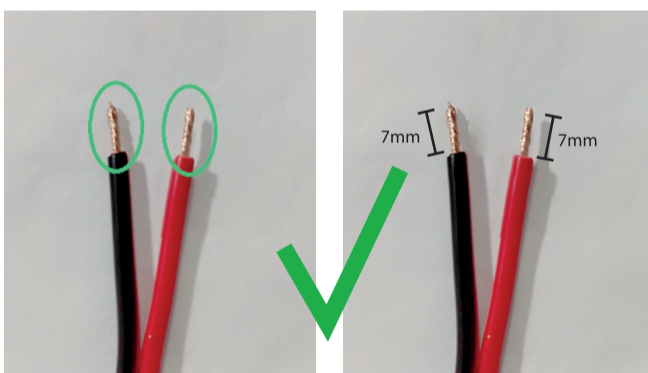
Micro-disconnection Indoor use (IP20), do not use in a wet environment.

Indoor use (IP20), do not use in a wet environment.

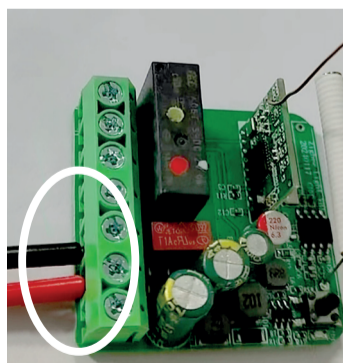
10. Complete your installation

Complete your installation with DiO solutions to control your lighting, your roller shutters, your garden or even visualize what is happening at home with video surveillance. Easy, qualitative, scalable and economical, discover all DiO connected home solutions on www.diohome.com.

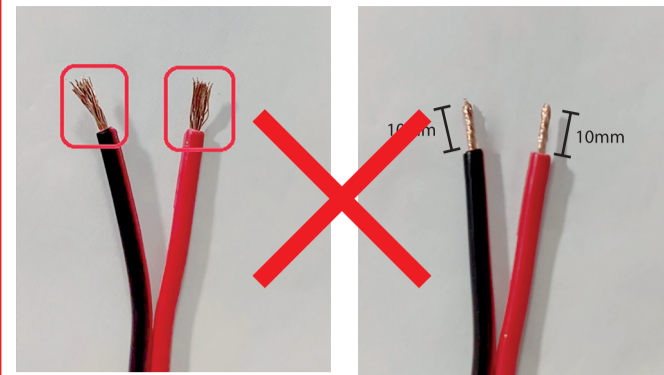
Dénudage correct des fils • Correct draad strippen Pelado correcto de cables • Decapagem correcta dos fios Spelatura corretta dei fili • Korrektes Abisolieren Correct wire stripping



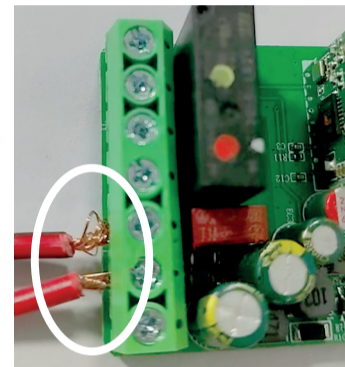
Connexion correct des fils • Juiste draadverbinding Conexión correcta de los cables • Ligaçao correcta dos fios Collegamento corretto dei fili • Korrekte Verbindung der Drähte Correct wire connection



Dénudage incorrect des fils • Verkeerd draad strippen Pelado incorrecto de los cables • Decapagem incorrecta dos fios Spelatura errata dei fili • Falsche Abisolierung Wrong wire stripping



Connexion incorrect des fils • Verkeerde draadverbinding Conexión incorrecta de los cables • Ligaçao incorrecta dos fios Collegamento dei fili non corretto • Falsche Verbindung der Drähte Incorrect wire connection



Recyclage
Ne jetez pas les batteries ou les appareils hors d'usage avec les déchets ménagers (ordures). Les substances dangereuses qu'ils sont susceptibles de contenir peuvent nuire à la santé ou à l'environnement. Faites reprendre ces produits par votre distributeur ou utilisez la collecte sélective des déchets proposée par votre commune.



Le soussigné, Chacon, déclare que l'équipement radioélectrique du type 54717 et 55855 sont conformes à la directive 2014/53/UE.
El texto completo de la declaración UE de conformidad está disponible a l'adresse internet suivante:
www.chacon.com/conformity



Recycling
Gooi batterijen of afgedankte producten niet bij het huishoudelijk afval (huisvuil). De gevaarlijke stoffen die ze kunnen bevatten, kunnen schadelijk zijn voor de gezondheid of het milieu. Laat uw winkeler deze producten terugnemen of maak gebruik van de door uw gemeente voorgestelde gescheiden afvalinzameling.



Hierbij verklaar ik, Chacon, dat het type radioapparaturen 55855 en 54717 conform zijn met Richtlijn 2014/53/EU. De volledige tekst van de EU-conformiteitsverklaring kan worden geraadpleegd op het volgende internetadres:
www.chacon.com/conformity



Recyclaje
No tire las pilas o los productos fuera de uso con los residuos domésticos (basura). Las sustancias peligrosas que pueden incluir pueden dañar la salud o el medio ambiente. Haz que tu vendedor retire estos productos o utiliza la recogida selectiva de basura que propone tu ciudad.



Por la presente, Chacon declara que el tipo de equipo radioeléctrico 55855 y 54717 son conformes con la Directiva 2014/53/UE.
El texto completo de la declaración UE de conformidad está disponible en la dirección Internet siguiente:
www.chacon.com/conformity



Recyclagem
Não atirar pilhas ou produtos fora de serviço com o lixo doméstico (lixo). As substâncias perigosas que podem incluir podem prejudicar a saúde ou o ambiente. Faça com que o seu retalhista aceite estes produtos de volta ou utilize a recolha selectiva de lixo proposta pela sua cidade.



O(a) abaixo assinado(a) Chacon declara que o presente tipo de equipamento de rádio 55855 e 54717 estão em conformidade com a Diretiva 2014/53/UE.
O texto integral da declaração de conformidade está disponível no seguinte endereço de Internet:
www.chacon.com/conformity



Recyclage
Non gettare le batterie o i prodotti fuori uso con i rifiuti domestici (spazzatura). Le sostanze pericolose che possono contenere possono nuocere alla salute o all'ambiente. Fai ritirare questi prodotti dal tuo rivenditore o utilizza la raccolta differenziata dei rifiuti proposta dalla tua città.



Il fabbricante, Chacon, dichiara che il tipo di apparecchiatura radio 55855 e 54717 si conformano alla direttiva 2014/53/UE.
Il testo completo della dichiarazione di conformità UE è disponibile al seguente indirizzo Internet:
www.chacon.com/conformity



Recyclage
Werfen Sie Batterien oder nicht mehr funktionstüchtige Produkte nicht in den Hausmüll. Die gefährlichen Stoffe, die sie enthalten können, können die Gesundheit oder die Umwelt schädigen. Bitten Sie Ihren Händler, diese Produkte zurückzunehmen, oder nutzen Sie die von Ihrer Stadt vorgeschlagene getrennte Müllsammlung.



Hiermit erklärt Chacon, dass die Funkanlagen des Typs 55855 und 54717 mit der Richtlinie 2014/53/EU übereinstimmen.
Der vollständige Text der EU-Konformitätserklärung ist unter der folgenden Internetadresse verfügbar:
www.chacon.com/conformity



Recyclage
Don't throw batteries or out of order products with the household waste (garbage). The dangerous substances that they are likely to include may harm health or the environment. Make your retailer take back these products or use the selective collect of garbage proposed by your city.



Hereby, Chacon declares that the radio equipment type 55855 and 54717 are in compliance with Directive 2014/53/EU.
The full text of the EU declaration of conformity is available at the following internet address:
www.chacon.com/conformity