

RYOBI®

ORIGINAL INSTRUCTIONS Percussion Drill

RPD1010

RPD1200

RPD2-1000



Important!

It is essential that you read the instructions in this manual before operating this machine.

Subject to technical modifications.



GENERAL POWER TOOL SAFETY WARNINGS

WARNING

Read all safety warnings and all instructions. Failure to follow the warnings and instructions may result in electric shock, fire and/or serious injury.

Save all warnings and instructions for future reference.

The term "power tool" in the warnings refers to your mains-operated (corded) power tool or battery-operated (cordless) power tool.

1) WORK AREA SAFETY

- a) **Keep work area clean and well lit.** Cluttered or dark areas invite accidents.
- b) **Do not operate power tools in explosive atmospheres, such as in the presence of flammable liquids, gases or dust.** Power tools create sparks which may ignite the dust or fumes.
- c) **Keep children and bystanders away while operating a power tool.** Distractions can cause you to lose control.

2) ELECTRICAL SAFETY

- a) **Power tool plugs must match the outlet. Never modify the plug in any way. Do not use any adapter plugs with earthed (grounded) power tools.** Unmodified plugs and matching outlets will reduce risk of electric shock.
- b) **Avoid body contact with earthed or grounded surfaces, such as pipes, radiators, ranges and refrigerators.** There is an increased risk of electric shock if your body is earthed or grounded.
- c) **Do not expose power tools to rain or wet conditions.** Water entering a power tool will increase the risk of electric shock.
- d) **Do not abuse the cord. Never use the cord for carrying, pulling or unplugging the power tool. Keep cord away from heat, oil, sharp edges or moving parts.** Damaged or entangled cords increase the risk of electric shock.
- e) **When operating a power tool outdoors, use an extension cord suitable for outdoor use.** Use of a cord suitable for outdoor use reduces the risk of electric shock.
- f) **If operating a power tool in a damp location is unavoidable, use a residual current device (RCD) protected supply.** Use of an RCD reduces the risk of electric shock.

3) PERSONAL SAFETY

- a) **Stay alert, watch what you are doing and use common sense when operating a power**

tool. Do not use a power tool while you are tired or under the influence of drugs, alcohol or medication. A moment of inattention while operating power tools may result in serious personal injury.

- b) **Use personal protective equipment. Always wear eye protection.** Protective equipment such as dust mask, non-skid safety shoes, hard hat or hearing protection used for appropriate conditions will reduce personal injuries.
- c) **Prevent unintentional starting. Ensure the switch is in the off-position before connecting to power source and/or battery pack, picking up or carrying the tool.** Carrying power tools with your finger on the switch or energising power tools that have the switch on invites accidents.
- d) **Remove any adjusting key or wrench before turning the power tool on.** A wrench or a key left attached to a rotating part of the power tool may result in personal injury.
- e) **Do not overreach. Keep proper footing and balance at all times.** This enables better control of the power tool in unexpected situations.
- f) **Dress properly. Do not wear loose clothing or jewellery. Keep your hair, clothing and gloves away from moving parts.** Loose clothes, jewellery or long hair can be caught in moving parts.
- g) **If devices are provided for the connection of dust extraction and collection facilities, ensure these are connected and properly used.** Use of dust collection can reduce dust-related hazards.

4) POWER TOOL USE AND CARE

- a) **Do not force the power tool. Use the correct power tool for your application.** The correct power tool will do the job better and safer at the rate for which it was designed.
- b) **Do not use the power tool if the switch does not turn it on and off.** Any power tool that cannot be controlled with the switch is dangerous and must be repaired.
- c) **Disconnect the plug from the power source and/or the battery pack from the power tool before making any adjustments, changing accessories or storing power tools.** Such preventive safety measures reduce the risk of starting the power tool accidentally.
- d) **Store idle power tools out of the reach of children and do not allow persons unfamiliar with the power tool or these instructions to operate the power tool.** Power tools are dangerous in the hands of untrained users.
- e) **Maintain power tools. Check for misalignment or binding of moving parts, breakage of parts and any other condition that may affect the power tool's operation. If damaged, have the**



power tool repaired before use. Many accidents are caused by poorly maintained power tools.

- f) **Keep cutting tools sharp and clean.** Properly maintained cutting tools with sharp cutting edges are less likely to bind and are easier to control.
- g) **Use the power tool, accessories and tool bits etc, in accordance with these instructions, taking into account the working conditions and the work to be performed.** Use of the power tool for operations different from those intended could result in a hazardous situation.

5) SERVICE

Have your power tool serviced by a qualified repair person using only identical replacement parts. This will ensure that the safety of the power tool is maintained.

DRILL SAFETY WARNINGS

- a) **Wear ear protectors when impact drilling.** Exposure to noise can cause hearing loss.
- b) **Use auxiliary handle(s), if supplied with the tool.** Loss of control can cause personal injury.
- c) **Hold power tool by insulated gripping surfaces, when performing an operation where the cutting accessory may contact hidden wiring or its own cord.** Cutting accessory contacting a "live" wire may make exposed metal parts of the power tool "live" and could give the operator an electric shock.
- d) **Hold power tool by insulated gripping surfaces, when performing an operation where the fastener may contact hidden wiring or its own cord.** Fasteners contacting a "live" wire may make exposed metal parts of the power tool "live" and could give the operator an electric shock.
- e) Wear safety goggles to protect your eyes from flying particles and splinters.

Additional safety warnings

When working on walls, ceilings or floors, avoid hitting electrical wiring and gas or water pipes.

INTENDED USE

- a) Drilling and screw driving in all types of wood.
- b) Drilling in metals: steel, brass, aluminum sheets, stainless steel and pipe (do not use impact drilling on these materials).
- c) Drilling in masonry: stone and masonry (use impact drilling), wall tiles (use ordinary drilling first, then impact drilling).

Do not use this product in any way other than those stated for intended use.

MAINTENANCE

WARNING

The product should never be connected to a power supply when you are assembling parts, making adjustments, cleaning, performing maintenance, or when the product is not in use. Disconnecting the product will prevent accidental starting that could cause serious injury.

- a) When servicing, use only original manufacturer's replacement parts, accessories and attachments. Use of any other parts may create a hazard or cause product damage.
- b) Avoid using solvents when cleaning plastic parts. Most plastics are susceptible to various types of commercial solvents and may be damaged by their use. Use clean cloths to remove dirt, carbon dust, etc.
- c) Do not at any time let brake fluids, gasoline, petroleum-based products, penetrating oils, etc., come in contact with plastic parts. They contain chemicals that can damage, weaken or destroy plastic.
- d) Electric tools used on fiberglass material, wallboard, spackling compounds, or plaster are subject to accelerated wear and possible premature failure because the fiberglass chips and grindings are highly abrasive to bearings, brushes, commutators, etc. Consequently, we do not recommend using this tool for extended work on these types of materials. However, if you do work with any of these materials, it is extremely important to clean the product using compressed air.
- e) Always wear safety goggles or safety glasses with side shields during power tool operation or when blowing dust. If operation is dusty, also wear a dust mask.
- f) If the power supply cord is damaged, it must be replaced only by the manufacturer or by an authorised service centre to avoid risk. Contact authorised service centre.
- g) For greater safety and reliability, all repairs should be performed by an authorised service centre.
- h) All of the bearings in the product are lubricated with a sufficient amount of high grade lubricant for the life span of the product under normal operating conditions. Therefore, no further lubrication is required.

ENVIRONMENTAL PROTECTION



Recycle raw materials instead of disposing of as waste. The machine, accessories and packaging should be sorted for environmental-friendly recycling.

SYMBOLS



Safety alert



Safety



Class II tool, double insulation



No-load speed



Wood



Metal



Masonry



Chuck Capacity



Impact



CE conformity



GOST-R conformity



Please read the instructions carefully before starting the machine.

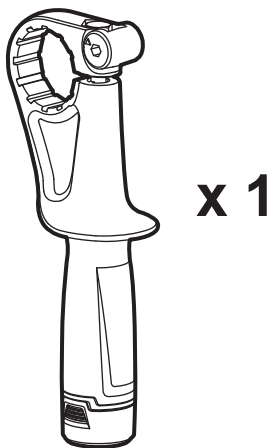
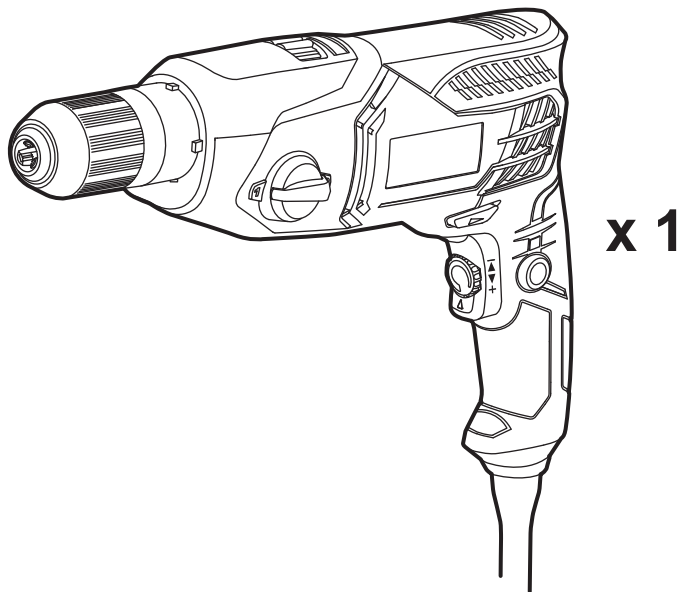


Waste electrical products should not be disposed of with household waste. Please recycle where facilities exist. Check with your local authority or retailer for recycling advice.

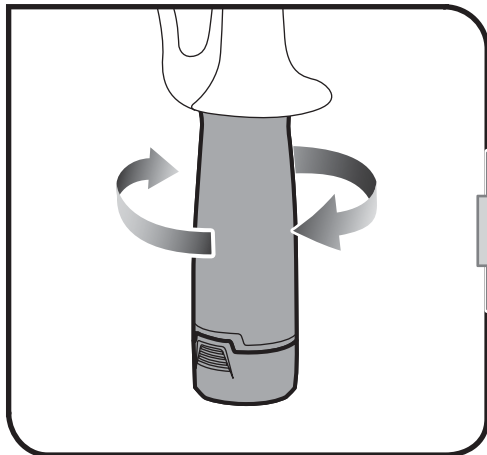




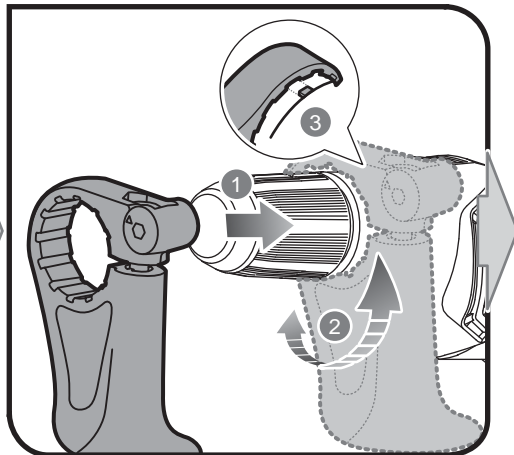
Unpacking



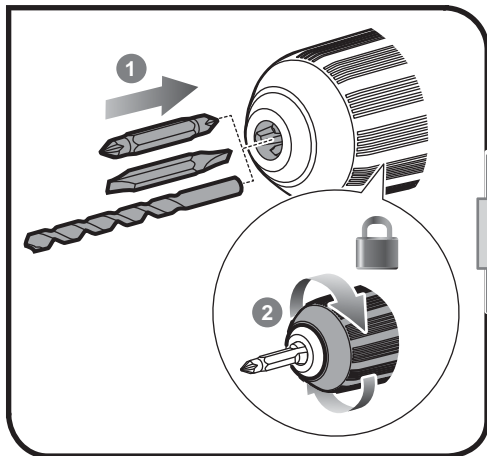
1



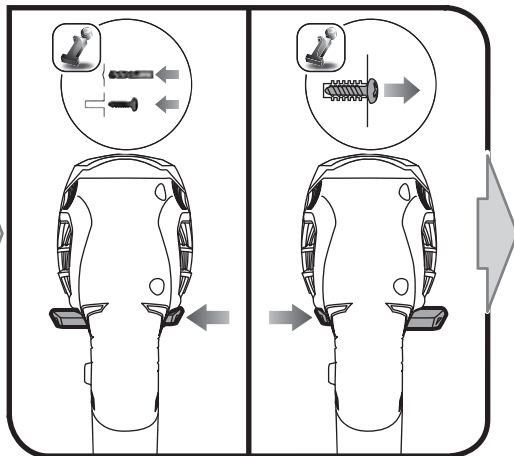
2



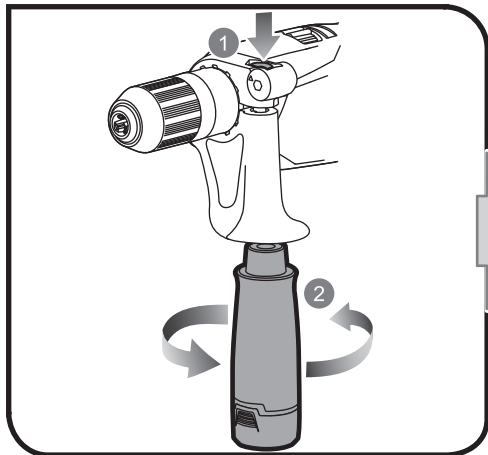
5



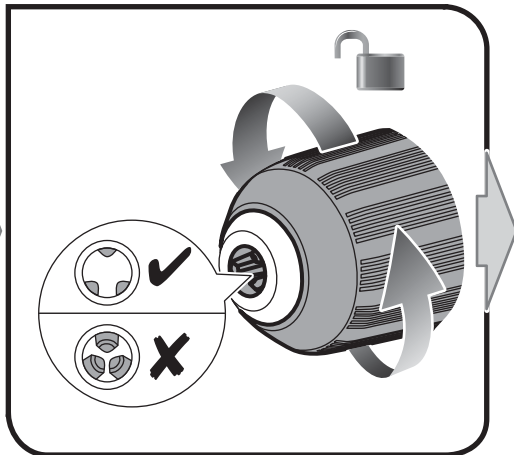
6



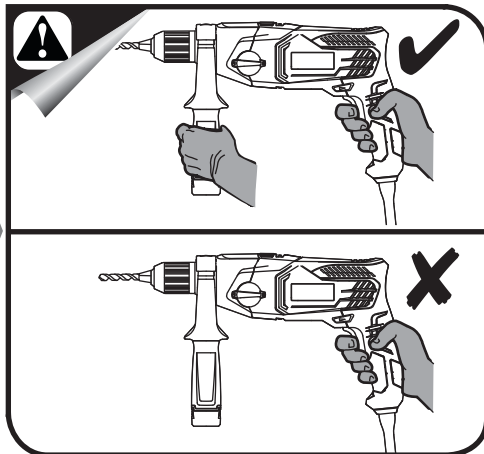
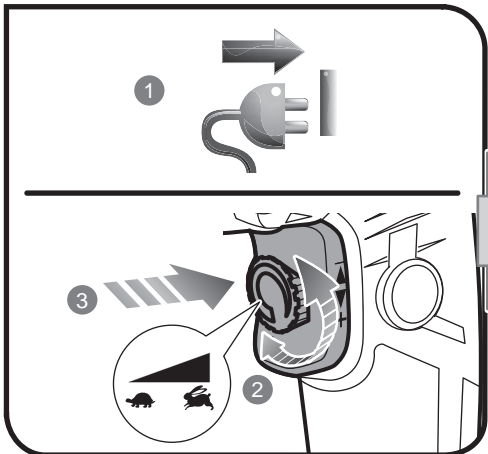
3



4

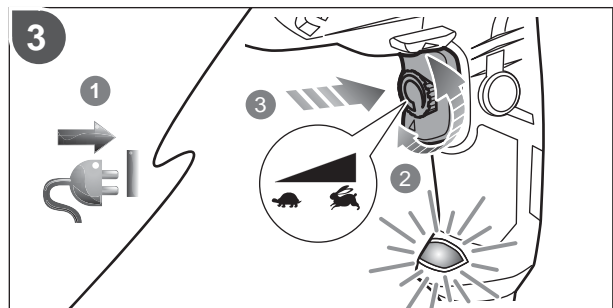
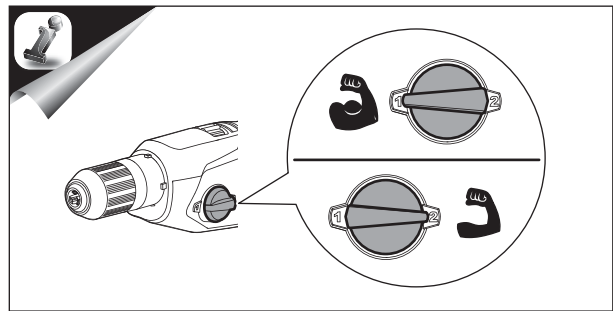
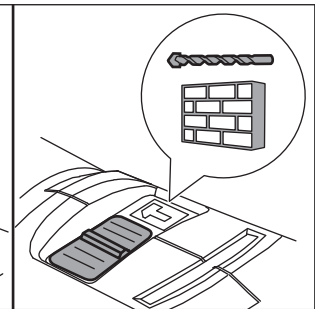
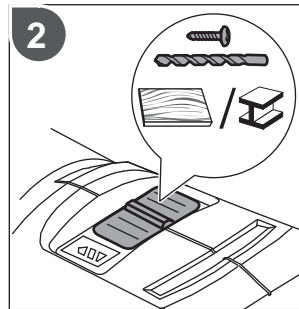
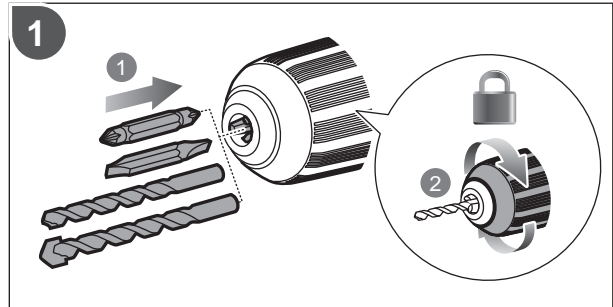
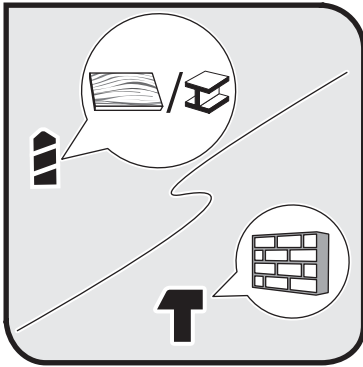


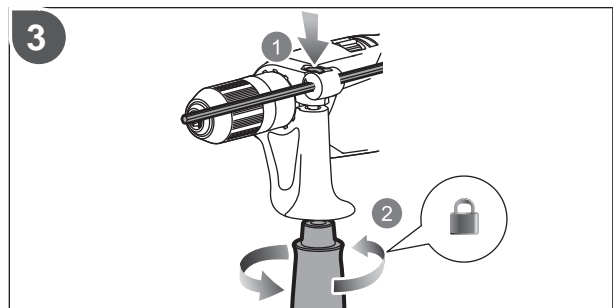
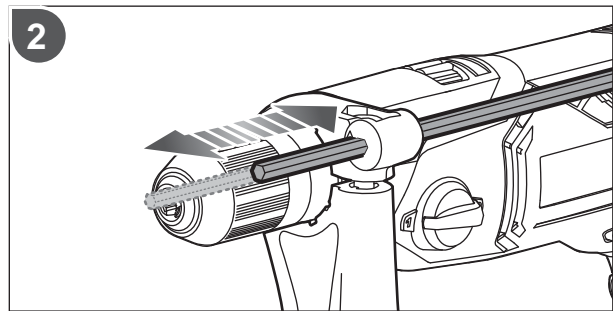
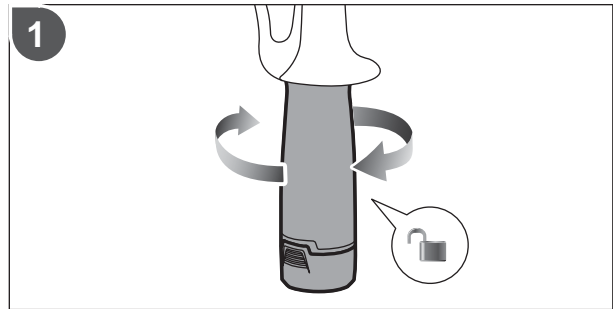
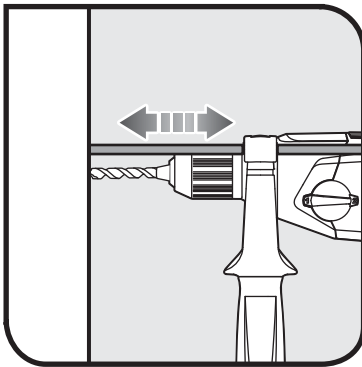
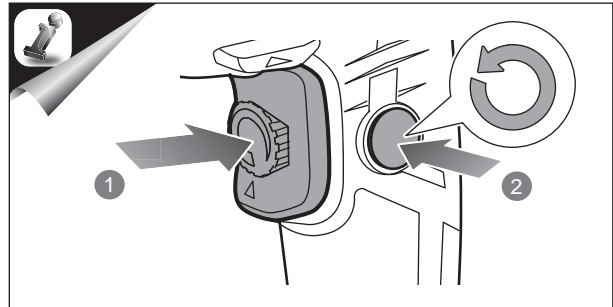
7





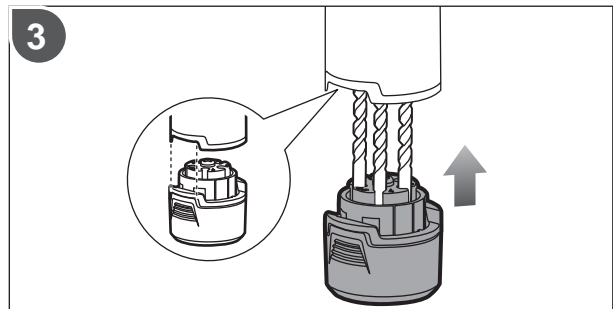
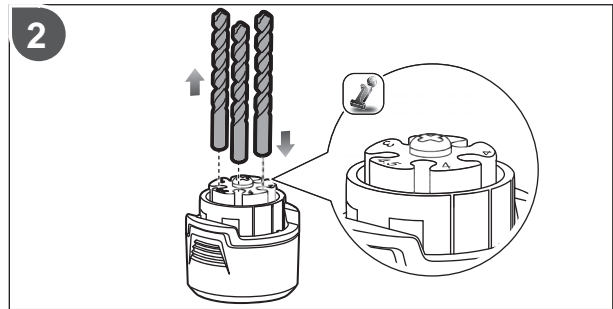
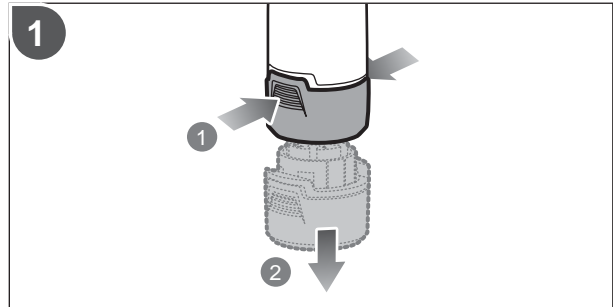
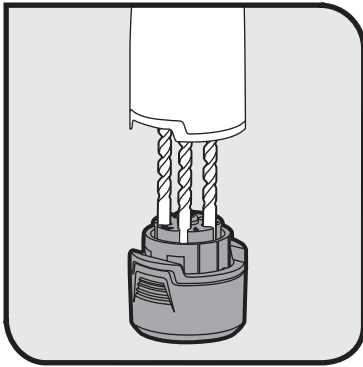
Operation







Operation





PRODUCT SPECIFICATIONS

Model	RPD1010	RPD1200	RPD2-1000
Voltage	220-240V ~ 50 Hz	220-240V ~ 50 Hz	220-240V ~ 50 Hz
Input	1010 W	1200 W	1010 W
No-load speed	0-1,200 / 0-3,200 min ⁻¹	0-1,200 / 0-3,200 min ⁻¹	0-1,200 / 0-3,200 min ⁻¹
Blows per minute (Impact rate)	0-19,200 / 0-51,200 min ⁻¹	0-19,200 / 0-51,200 min ⁻¹	0-19,200 / 0-51,200 min ⁻¹
Chuck capacity	13 mm	13 mm	13 mm
Drilling capacity			
in wood	50 mm	50 mm	50 mm
in metal	13 mm	16 mm	13 mm
in masonry	20 mm	22 mm	20 mm
Weight (According to EPTA procedure 01/2003)	3.05 kg	3.15 kg	3.05 kg

Measured sound values determined according to EN 60745:

A-weighted sound pressure level	$L_{pA} = 98.5 \text{ dB(A)}$	$L_{pA} = 97.0 \text{ dB(A)}$	$L_{pA} = 98.5 \text{ dB(A)}$
Uncertainty K	3.0 dB(A)	3.0 dB(A)	3.0 dB(A)
A-weighted sound power level	$L_{WA} = 109.5 \text{ dB(A)}$	$L_{WA} = 108.0 \text{ dB(A)}$	$L_{WA} = 109.5 \text{ dB(A)}$
Uncertainty K	3.0 dB(A)	3.0 dB(A)	3.0 dB(A)
Wear ear protectors.			

The vibration total values (triaxial vector sum) determined according to EN 60745:

Impact drilling into concrete	$a_{h,1D} = 15.5 \text{ m/s}^2$	$a_{h,1D} = 15.8 \text{ m/s}^2$	$a_{h,1D} = 15.5 \text{ m/s}^2$
Uncertainty K	1.5 m/s ²	1.5 m/s ²	1.5 m/s ²
Drilling into metal	$a_{h,D} = 6.3 \text{ m/s}^2$	$a_{h,D} = 7.4 \text{ m/s}^2$	$a_{h,D} = 6.3 \text{ m/s}^2$
Uncertainty K	1.5 m/s ²	1.5 m/s ²	1.5 m/s ²
Screwdriving without impact	$a_h = 2.3 \text{ m/s}^2$	$a_h = 3.9 \text{ m/s}^2$	$a_h = 2.3 \text{ m/s}^2$
Uncertainty K	1.5 m/s ²	1.5 m/s ²	1.5 m/s ²

VIBRATION LEVEL



WARNING

The vibration emission level given in this information sheet has been measured in accordance with a standardised test given in EN 60745 and may be used to compare one tool with another. It may be used for a preliminary assessment of exposure. The declared vibration emission level represents the main applications of the tool. However if the tool is used for different applications, with different accessories or poorly maintained, the vibration emission may differ. This may significantly increase the exposure level over the total working period.

An estimation of the level of exposure to vibration should also take into account the times when the tool is switched off or when it is running but not actually doing the job. This may significantly reduce the exposure level over the total working period. Identify additional safety measures to protect the operator from the effects of vibration such as: maintain the tool and the accessories, keep the hands warm, organisation of work patterns.



GUARANTEE

In addition to any statutory rights resulting from the purchase, this product is covered by a guarantee as stated below.

1. The guarantee period is 24 months for consumers and commences on the date when the product was purchased. This date has to be documented by an invoice or other proof of purchase. The product is designed and dedicated to consumer and private use only. So there is no guarantee provided in case of professional or commercial use.
2. There is, in some cases (i.e. promotion, range of tools), a possibility to extend the warranty period over the period described above using the registration on the www.ryobitools.eu website. The eligibility of the tool is clearly displayed in stores and/or on packaging. The end user needs to register his/her newly-acquired tools online within 8 days from the date of purchase. The end user may register for the extended warranty in his country of residence if listed on the online registration form where this option is valid. Furthermore, end users must give their consent to the storage of the data which are required to enter online and they have to accept the terms and conditions. The registration confirmation receipt, which is sent out by e-mail, and the original invoice showing the date of purchase will serve as proof of the extended warranty. Your statutory rights remain unaffected.
3. The guarantee covers all defects of the product during the warranty period due to defaults in workmanship or material at the purchase date. The guarantee is limited to repair and/or replacement and does not include any other obligations including but not limited to incidental or consequential damages. The warranty is not valid if the product has been misused, used contrary to the instruction manual, or being incorrectly connected. This guarantee does not apply to
 - any damage to the product that is the result of improper maintenance
 - any product that has been altered or modified
 - any product where original identification (trade mark, serial number) markings have been defaced, altered or removed
 - any damage caused by non-observance of the instruction manual
 - any non CE product
 - any product which has been attempted to be repaired by an non-qualified professional or without prior authorization by Techtronic Industries
 - any product connected to improper power supply (amps, voltage, frequency)
 - any damage caused by external influences (chemical, physical, shocks) or foreign substances
 - normal wear and tear of spare parts
 - inappropriate use, overloading of the tool
 - use of non-approved accessories or parts
 - carburettor after 6 months, carburettor adjustments after 6 months
 - power tool accessories provided with tool or purchased separately. Such exclusions include but is not limited to screw driver bits, drill bits, abrasive discs, sand paper and blades, lateral guide
 - components (parts and accessories) subject to natural wear and tear, including but not limited to carbon brushes, chuck, power cord, auxiliary handle, sanding plate, dust bag, dust exhaust tube
4. For servicing, the product must be sent or presented to a RYOBI authorized service station listed for each country in the following list of service station addresses. In some countries your local RYOBI dealer undertakes to send the product to the RYOBI service organisation. When sending a product to a RYOBI service station, the product should be safely packed without any dangerous contents such as petrol, marked with sender's address and accompanied by a short description of the fault.
5. A repair/replacement under this guarantee is free of charge. It does not constitute an extension or a new start of the guarantee period. Exchanged parts or tools become our property. In some countries delivery charges or postage will have to be paid by the sender.
6. This guarantee is valid in the European Community, Switzerland, Iceland, Norway, Liechtenstein, Turkey and Russia. Outside these areas, please contact your authorized RYOBI dealer to determine if another warranty applies.



AUTHORISED SERVICE CENTRES

RYCKO Technical Services LTD

104 Green Lane Hertfordshire AL3 6EX St Albans
Phone: 08458 678 790
Email: info@ryckotechnical.com

Penn Lawn Mowers

19-21 Parkside Ind Estate Hants BH24 3SG
Ringwood
Phone: 01425 479386
Fax: 01425 479386
Email: sales@penn-lawn-mowers.co.uk

Brighton Tools & Fixings

Unit 7, Centenary Ind Estate Hughes Road, Off
Hollingdean Road Sussex Est BN2 4AW Brighton
Phone: 01273 620 456
Fax: 01273 620611
Email: wayne@brightontools.co.uk

Tooltech Industrial Equip

227 E Dunhill Road Macosquin Coleraine Co
Londonderry BT514LQ
Phone: 028 70359493
Email: john@tooltech.org.uk

The Lawnmower Company

Unit B1, North Cheshire Trading Estate Prenton
CH43 3DU Wirral
Phone: 0151 609 0652
Fax: 0151 608 7615
Email: tlcwirral@aol.com

C J Sinclair Limited

44 Victoria Road St Peters KENT CT10 2UG
Broadstairs
Phone: 01843 869400
Fax: 01843 869400
Email: repairs@cjsinclairltd.co.uk

ACD PLANT LTD

145 Southbank Road Coundon CV6 1FG Coventry
Phone: 02476 594348
Email: danmcgunigle@acdplant.co.uk

Vale Garden & Leisure

King Street Middlewich Cheshire CW10 9LF
Phone: 01606 841800
Email: garden@valemotorcycles.co.uk

JWC Tool Repairs

Unit 6 Hills Centre Johnstown Road Dun Laoghire
Co Dublin 18
Phone: 01 2369877
Email: jwc.toolrepairs@eircom.net

Frank Clark Ltd

Doughcloyne Industrial Estate Sarsfield Road
Wilton, Cork EIRE
Phone: 00353 21 4542222
Email: vicky@frankclark.ie

Murray Power Tools

10 Primrose Avenue Grangemouth FK3 8YD Falkirk
Phone: 01324 486218
Fax: 01324 666184
Email: info@murraypowertools.com

Austin Eames

Plas Acton Wrexham North Wales LL11 2UB
Phone: 01978 261095
Email: austineames@btconnect.com

Wrexham Power Tools

Five Fords Gate, Bridge Road, Wrexham Ind Estate
Wrexham LL13 9PS Wrexham
Phone: 01978 660011
Fax: 01978 664644
Email: info@wrexhampower.co.uk

Lawnmower Service Limited

Grantham Road, Wellingore LN5 0HH Lincolnshire
Phone: 01522 810562

POWER TOOL SOLUTIONS

321 Newark Road Bracebridge LN5 8PE LINCOLN
Phone: 01522 535352
Fax: 01592 519005
Email: sales@powertoolsolutions.co.uk

C D Powertools

76 Old Road Churwell Morley LS27 7TH Leeds
Phone: 0113 271 84 94
Fax: 0113 270 99 55
Email: info@cdpowertools.co.uk

Henton & Chattell Limited

London Road Nottingham NG2 3HW
Phone: 0115 986 2161
Email: service@hentonandchattell.com

Garden Machines (Northampton)

66-70 Kingsthorpe Road NN2 6HD Northampton
Phone: 01604 716222
Email: jackbrown@gardenmachinesltd.co.uk

CBS Power Tools Limited

Unit 4, V P Square Fegate PE1 5YS Peterborough
Phone: 01733 343031
Email: keith@cbspowertools.co.uk

Plymouth Tools & Spares

111 Victoria Road St Budeaux PL15 1RX Plymouth
Phone: 01752 361474
Fax: 01752 366133
Email: info@plymouthtools.com

Island Power Tools & Hire Centre

Unit D 5 Spithead Bus Centre, Newport Road,
Sandown Isle of Wight PO36 9PH Sandown
Phone: 01983 404546
Fax: 404241
Email: steve@islandpowertools.wanadoo.co.uk

Aldermaston Tools

Unit 47 Young's Ind Estate RG7 4PW Aldermaston
Phone: 0118 981 1470
Fax: 0118 981 6879
Email: aldermaston@btconnect.com

CME Plant

Bryn Y Groes Farm Ystradgynlais West Glamorgan
SA9 1LF
Phone: 01639 845184
Email: becca@cme-direct.co.uk

Southern Power Tool Services

Unit A Nickel Close Winnall Hampshire SO23 7RJ
Winchester
Phone: 01962 863507

Tool-Line Limited

480-486 London Road Westcliff on sea Essex SS0
9LD Westcliff-On-Sea
Phone: 01702 391791

Marshall & Parsons

1111 London Road Leigh on Sea Essex SS9 3JL
Leigh-On-Sea
Phone: 01702 470100

POWERTECH IND LTD

Unit 2c Ellisons Road Killmarsh S21 2JG Sheffield
Phone: 0114 247 4080
Email: workshop@powertech-industrial.co.uk

Toolfix Limited

Unit 8 Quay Road Brunel Ind Estate TQ12 4DZ
Newton Abbot
Phone: 01626 262129

Celtic Engineering

Water-Ma-Trout Ind Est Helston Cornwall TR13 OLV
Dublin 11
Phone: 01326 574961
Email: celliceng@btconnect.com

Heath Hayes Marine

49 Stafford Street Heath Hayes Cannock, Staffs
WS12 2EH
Phone: 01543 275048
Email: hhmsales@btconnect.com

PTRS

90/2 Lagan Road Dublin Ind Estate Glasnevin
Dublin 11
Phone: 01 8305866
Email: enquiries@powertool.ie

Paragon Power Tools Ltd

11-12 Cookstown Enterprise Park, Tallaght Dublin 24
Phone: 00353014596999
Email: service@paragonpt.com

Donegal Fixings

Glerczou Business Park Mouicte Co Donegal
Dublin 11
Phone: 074 93 82046
Email: donegalfixings@yahoo.ie

J W Tools

Unit 8 Oranmore Business Park Oranmore Co
Galway
Phone: 091 792880
Email: joewhelan@lawinking.ie

DALY INDUSTRIAL

95 LOWER GLANMIRE ROAD CORK IRELAND
Phone: 00353 21 4500051
Fax: 003532214508203
Email: info@disc.ie

For an updated list of authorised service centres, visit <http://uk.ryobitools.eu/service-agents-ryobi.htm>.



DECLARATION OF CONFORMITY

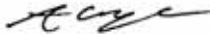
Techtronic Industries GmbH
Max-Eyth-Straße 10, 71364 Winnenden, Germany

Herewith we declare that the product

Percussion Drill
Model number: RPD1010 / RPD1200
Serial number range:
RPD1010: 44425101000001-44425101999999
RPD1200: 44425201000001-44425201999999

is in conformity with the following standards or standardized documents

2006/42/EC, 2004/108/EC, 2011/65/EU, EN55014-1:2006+A1:2009+A2:2011, EN55014-2:1997+A1:2001+A2:2008,
EN61000-3-2:2006+A1:2009+A2:2009, EN61000-3-3:2008, EN60745-1:2009+A11:2010, EN60745-2-1:2010,
EN60745-2-2:2010



Andrew John Eyre (BEng, CEng, MIET)
Vice President, Regulatory & Safety
Winnenden, Dec. 10, 2013



Authorised to compile the technical file:
Alexander Krug, Managing Director
Techtronic Industries GmbH
Max-Eyth-Straße 10, 71364 Winnenden, Germany







