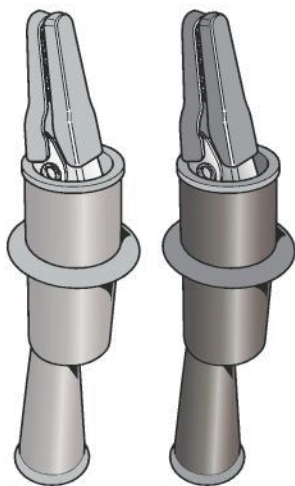


# Lexman



**5** **GUARANTEE**  
**YEARS\***

EAN CODE : 3276007463767



FR

Manuel d'utilisation.

ES

Manual de utilización.

PT

Manual de utilização.

IT

Manuale per l'uso.

EL

Εγχειρίδιο χρήσης.

PL

Instrukcja obsługi.

UA

Керівництво з експлуатації.

RO

Manual de utilizare.

EN

Crocodile connectors  
User guide.




Traduit des instructions originales/Traducido de las  
instrucciones originales/Traduzido das instruções  
originais/Tradotto dalle istruzioni originali/Μετάφραση των  
αρχικών οδηγιών/Tłumaczenie z oryginalnych instrukcji/  
Переклад оригінальної інструкції / Traduceti instrucțiunile originale/  
Translated from original instructions.

## Introduction

The alligator clips for multimeter probes allow hands free steady measurements. LX-M-1000-02 alligator clips are compatible with the following Lexman products: LX-M-2000, LX-M-1000, LX-M-1000-01.

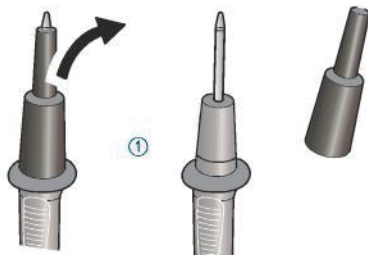
## Symbols

1. CAT III 1000V
2. Indoor use
3. Temperature : 0 ~ 40 °C
4. Humidity : ≤85%
5. POLLUTION DEGREE 2
6. The applicable MEASUREMENT CATEGORY of a combination of a probe assembly and an accessory is the lower of the MEASUREMENT CATEGORIES of the probe assembly and of the accessory.
7. If the probe assembly is used in a manner not specified by the manufacturer, the protection provided by the probe assembly may be impaired.
8. Any parts which are required to be examined or supplied only by the manufacturer or his agent.

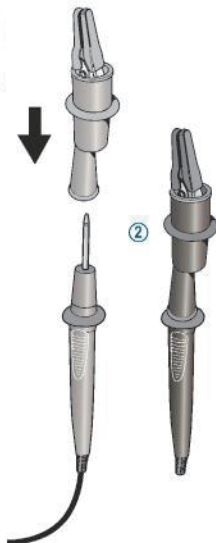
Symbol	Description
	Warning
	Double insulation
	Comply with European Union Standards
CAT III	(Measurement Category III) is applicable to test and measuring circuits connected to the distribution part of the building's low-voltage MAINS installation.
Model	LX-M-1000-02
Maximum current	10A
Electrical safety	CAT III 1000V

## Operating instructions

- 1/ Remove the caps of the probes onto which you need to connect the alligator clips.



- 2/ Connect the alligator clips by inserting the metal part of the probe into the rear end of the clip. The product is ready to use.





# Lexman



Electrical products must not be disposed of with domestic waste. They must be taken to a communal collecting point for environmentally friendly disposal in accordance with local regulations. Contact your local authorities or stockist for advice on recycling. The packaging material is recyclable. Dispose of the packaging in an environmentally friendly manner and make it available for the recyclable material collection service.

Don't throw batteries or out of order products with the household waste (garbage). The dangerous substances that they are likely to include may harm health or the environment. Make your retailer take back these products or use the selective collect of garbage proposed by your city.

FR

ADEO Services -  
135 Rue Sadi Carnot - CS 00001  
59790 RONCHIN - France

UA

ТОВ «Леруа Мерлен Україна»,  
вул. Полярна 17а, м. Київ 04201,  
Україна



\* Garantie 5 ans  
Garantía 5 años  
Garantia 5 anos  
Garanzia 5 anni  
5 έτη εγγύηση  
5 lata gwarancji  
Гарантія 5 роки  
5 ani garanție  
5-Year warranty



Made in CHINA