



NOTICE DE POSE
GARANTEE
Les dalles Intenso sont garanties 25 ans contre l'usure...

INSTRUCCIONES PARA LA COLOCACION
GARANTEE
La instalación de este producto debe realizarse en un espacio...

INSTRUÇÕES PARA A COLOCAÇÃO
GARANTEE
Este produto é garantido por 25 anos contra o desgaste...

INSTRUKCIJE ZA INSTALACIJU
GARANTEE
Ovaj proizvod je garantiran 25 godina protiv habanja...

INSTRUKCIJE ZA INSTALACIJU
GARANTEE
Ovaj proizvod je garantiran 25 godina protiv habanja...

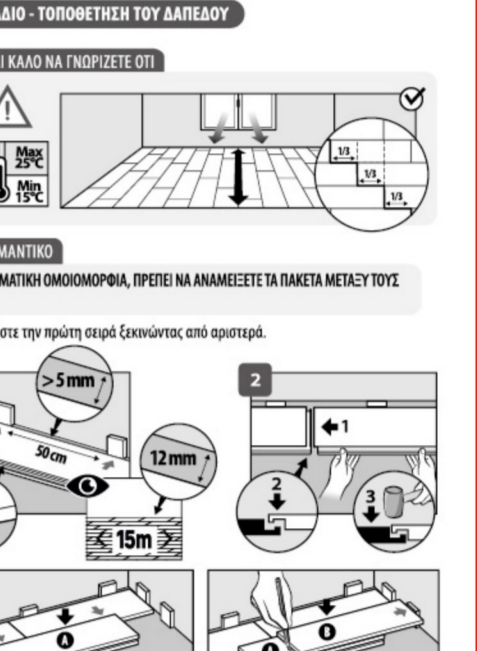
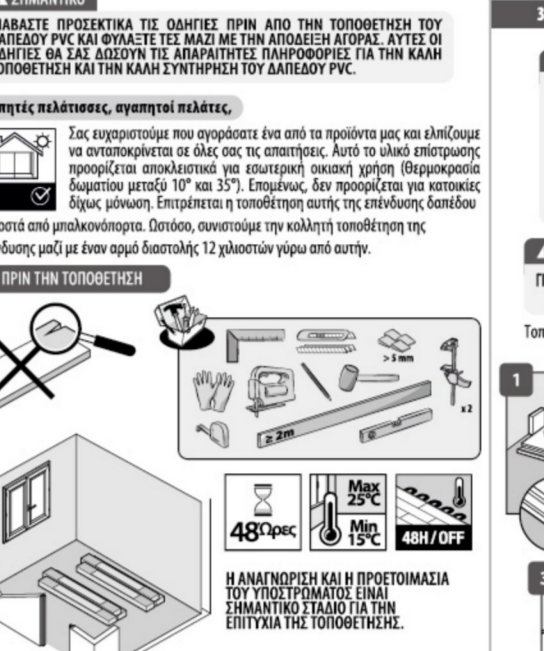
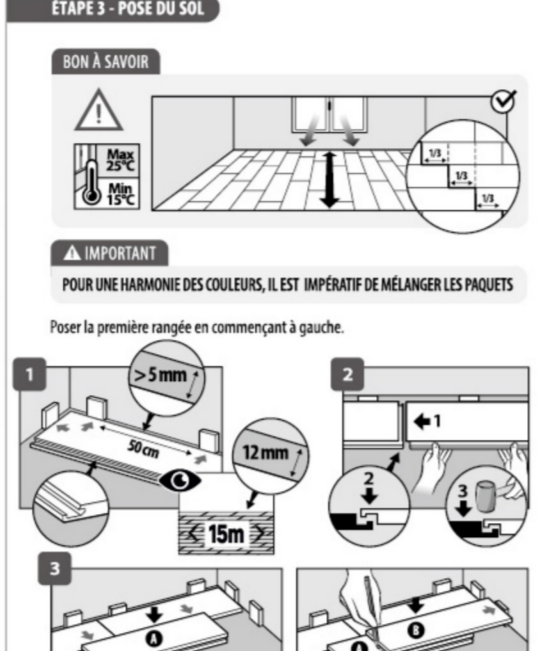
INSTRUKCIJE ZA INSTALACIJU
GARANTEE
Ovaj proizvod je garantiran 25 godina protiv habanja...

INSTRUKCIJE ZA INSTALACIJU
GARANTEE
Ovaj proizvod je garantiran 25 godina protiv habanja...

INSTRUKCIJE ZA INSTALACIJU
GARANTEE
Ovaj proizvod je garantiran 25 godina protiv habanja...

INSTRUKCIJE ZA INSTALACIJU
GARANTEE
Ovaj proizvod je garantiran 25 godina protiv habanja...

INSTRUKCIJE ZA INSTALACIJU
GARANTEE
Ovaj proizvod je garantiran 25 godina protiv habanja...



Technical specifications and icons for the floor tiles, including temperature ranges and load capacity.

Installation steps 1-3: RECONOCIMIENTO DEL SUELO (Floor Recognition), PREPARACION DEL SOPORTE (Support Preparation), and ENTRENTE (In Between).

Installation steps 4-6: ENTRENTE (In Between), MANTENIMIENTO (Maintenance), and VERIFICACION DEL SUELO (Floor Verification).

Installation steps 7-8: PREPARACION DEL SOPORTE (Support Preparation) and MANTENIMIENTO (Maintenance).

Installation steps 9-10: MANTENIMIENTO (Maintenance) and VERIFICACION DEL SUELO (Floor Verification).

Installation steps 11-12: VERIFICACION DEL SUELO (Floor Verification) and MANTENIMIENTO (Maintenance).

Installation steps 13-14: MANTENIMIENTO (Maintenance) and VERIFICACION DEL SUELO (Floor Verification).

Installation steps 15-16: VERIFICACION DEL SUELO (Floor Verification) and MANTENIMIENTO (Maintenance).

Installation steps 17-18: MANTENIMIENTO (Maintenance) and VERIFICACION DEL SUELO (Floor Verification).

Installation steps 19-20: VERIFICACION DEL SUELO (Floor Verification) and MANTENIMIENTO (Maintenance).

Installation steps 21-22: MANTENIMIENTO (Maintenance) and VERIFICACION DEL SUELO (Floor Verification).

Installation instructions in Spanish, including sections for 'INSTRUCCIONES DE INSTALACION (1/2)', 'INSTRUCCIONES DE INSTALACION (2/2)', and 'MANTENIMIENTO'.

Installation instructions in Spanish, including sections for 'INSTRUCCIONES DE INSTALACION (1/2)', 'INSTRUCCIONES DE INSTALACION (2/2)', and 'MANTENIMIENTO'.

Installation instructions in Spanish, including sections for 'INSTRUCCIONES DE INSTALACION (1/2)', 'INSTRUCCIONES DE INSTALACION (2/2)', and 'MANTENIMIENTO'.

Installation instructions in Spanish, including sections for 'INSTRUCCIONES DE INSTALACION (1/2)', 'INSTRUCCIONES DE INSTALACION (2/2)', and 'MANTENIMIENTO'.

Installation instructions in Spanish, including sections for 'INSTRUCCIONES DE INSTALACION (1/2)', 'INSTRUCCIONES DE INSTALACION (2/2)', and 'MANTENIMIENTO'.

Installation instructions in Spanish, including sections for 'INSTRUCCIONES DE INSTALACION (1/2)', 'INSTRUCCIONES DE INSTALACION (2/2)', and 'MANTENIMIENTO'.