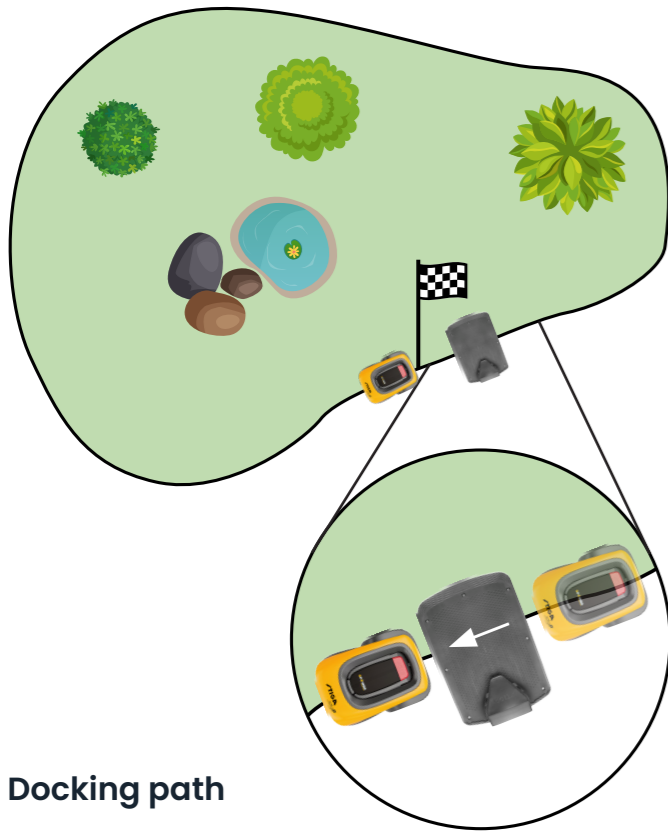
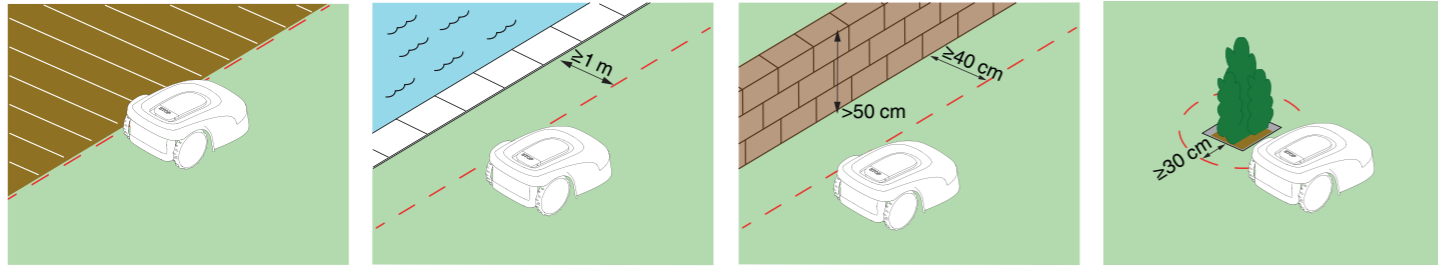
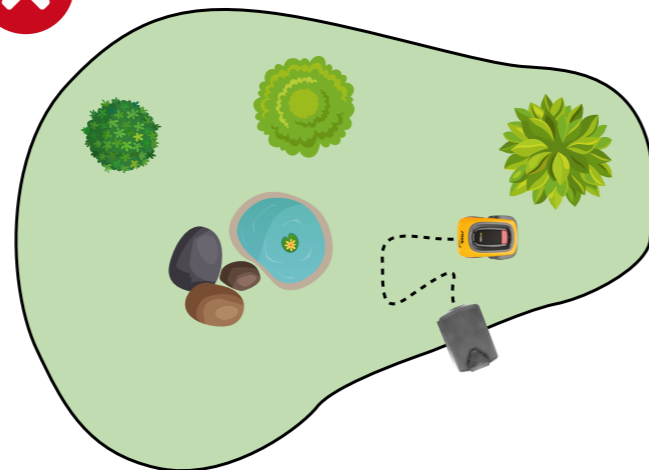
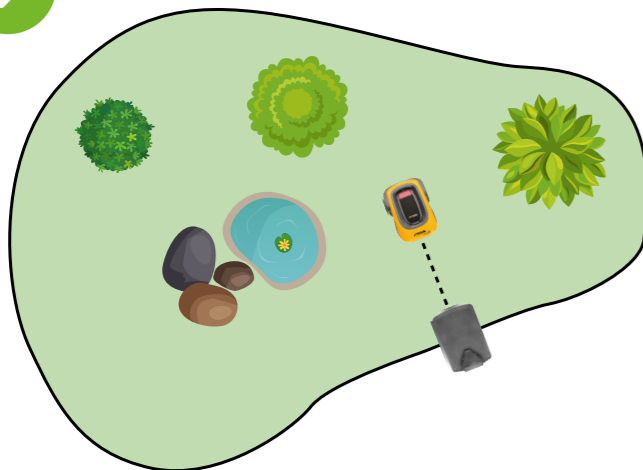


## Perimeter registration



## Docking path



# STIGA

## Quick guide

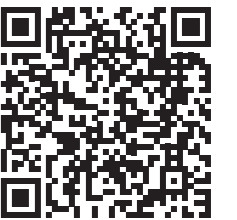
A 1500

A 3000

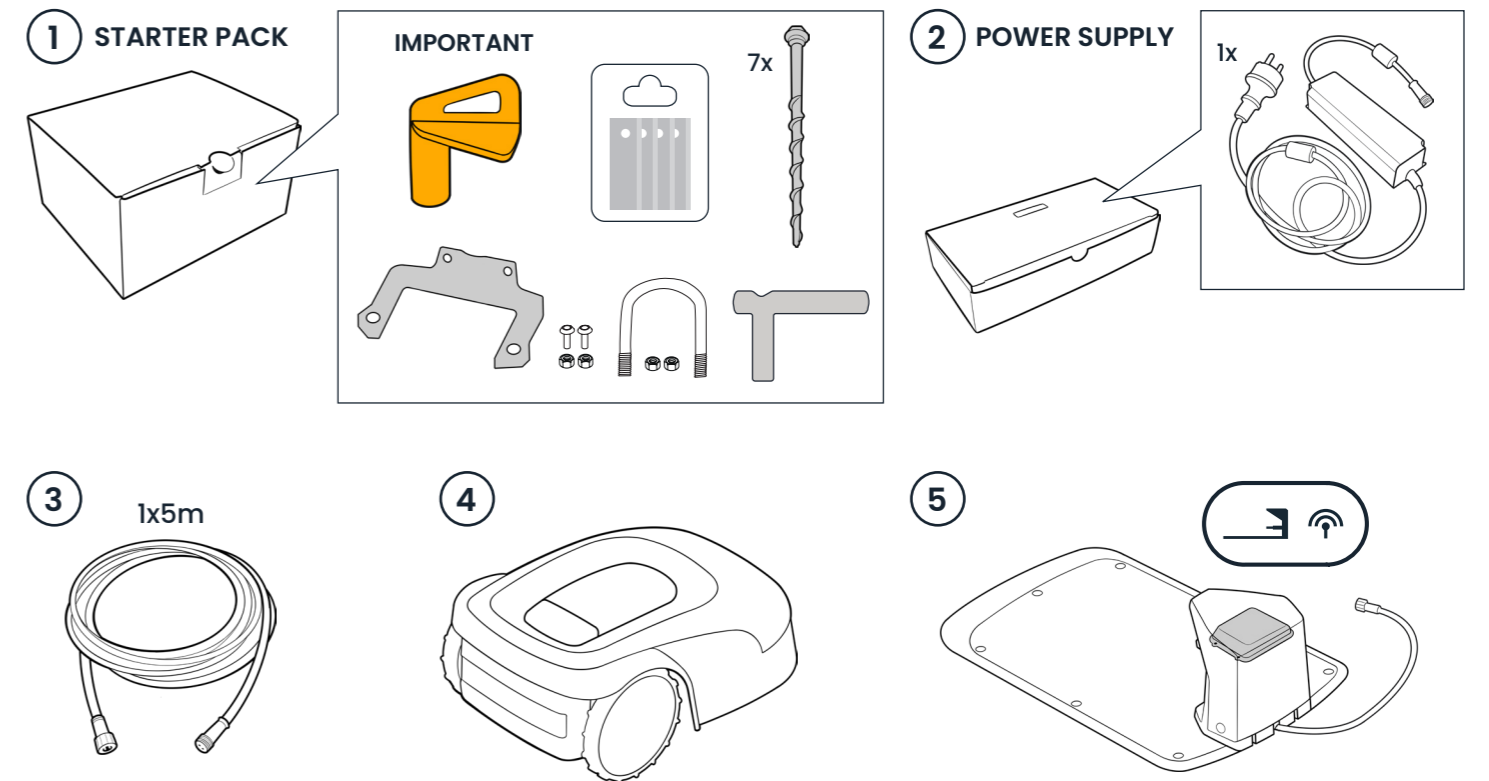
A 5000



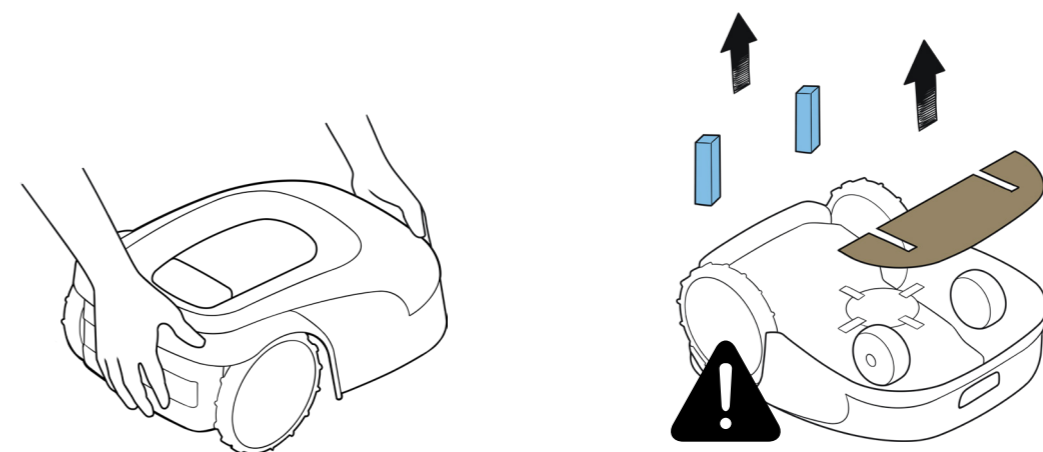
HOW TO VIDEO



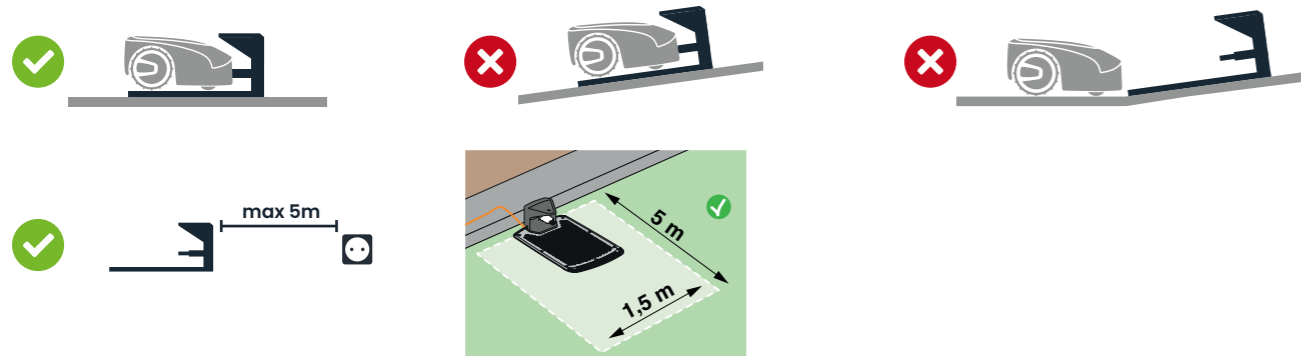
## What's in the box



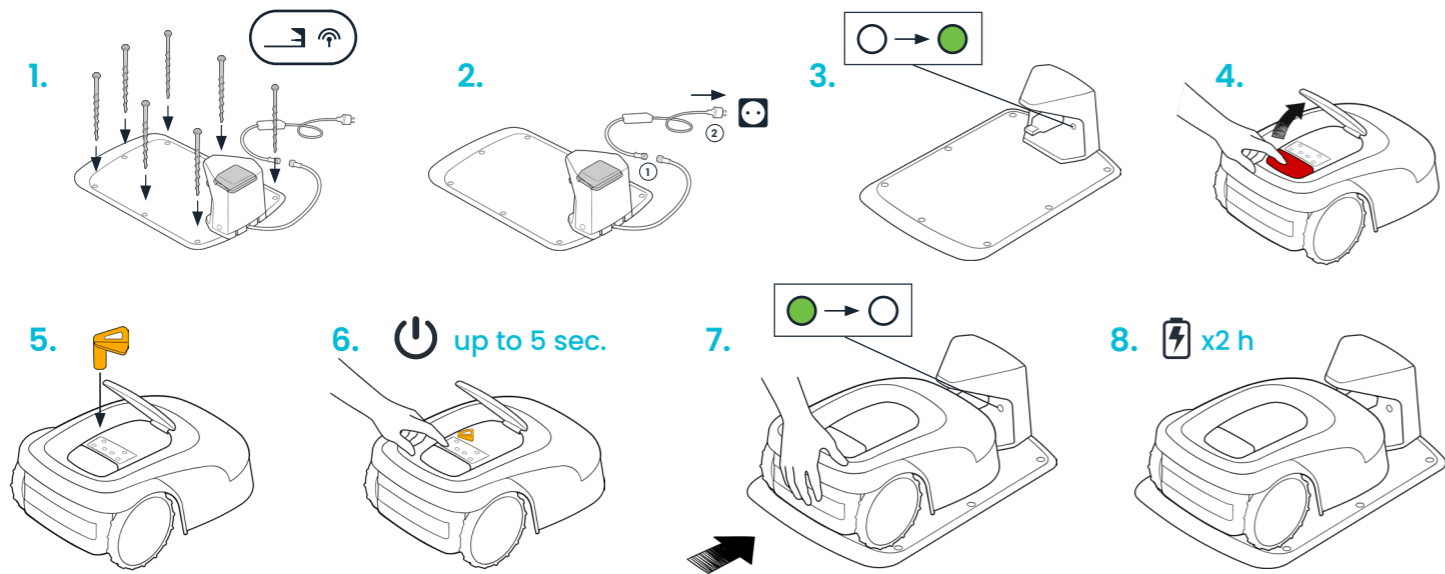
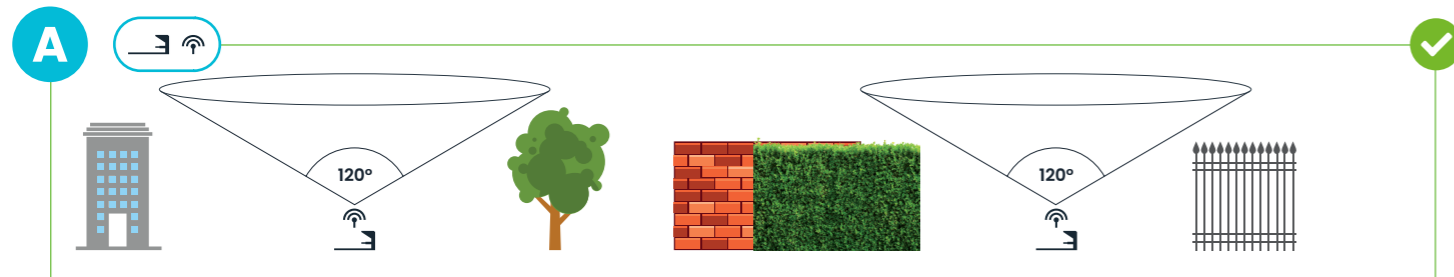
## Unboxing steps



## Charging station positioning



## Reference station positioning



## STIGA.GO App

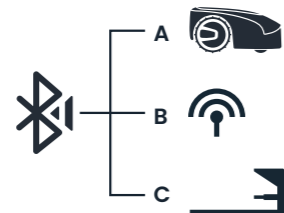
1. Download STIGA.GO App



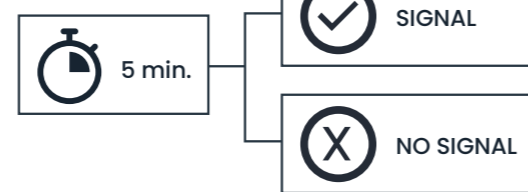
2. Enter STIGA.GO App

## in App

3. Bluetooth pairing

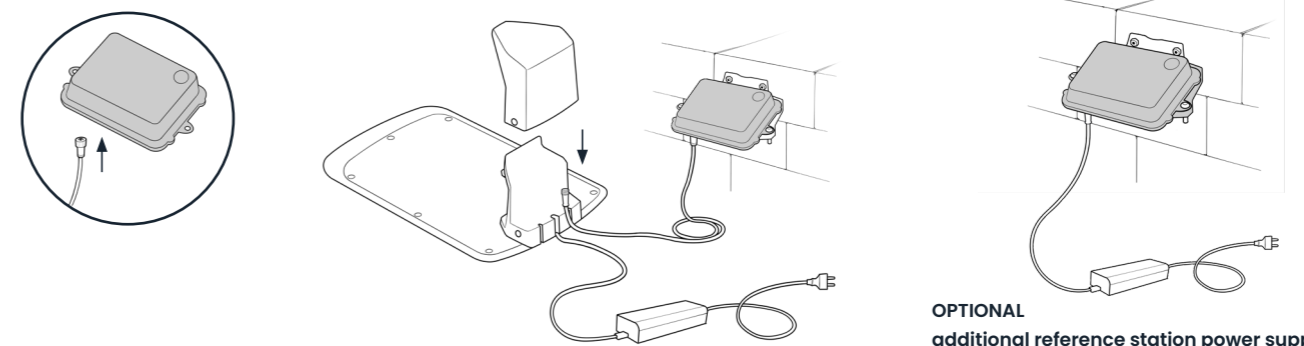
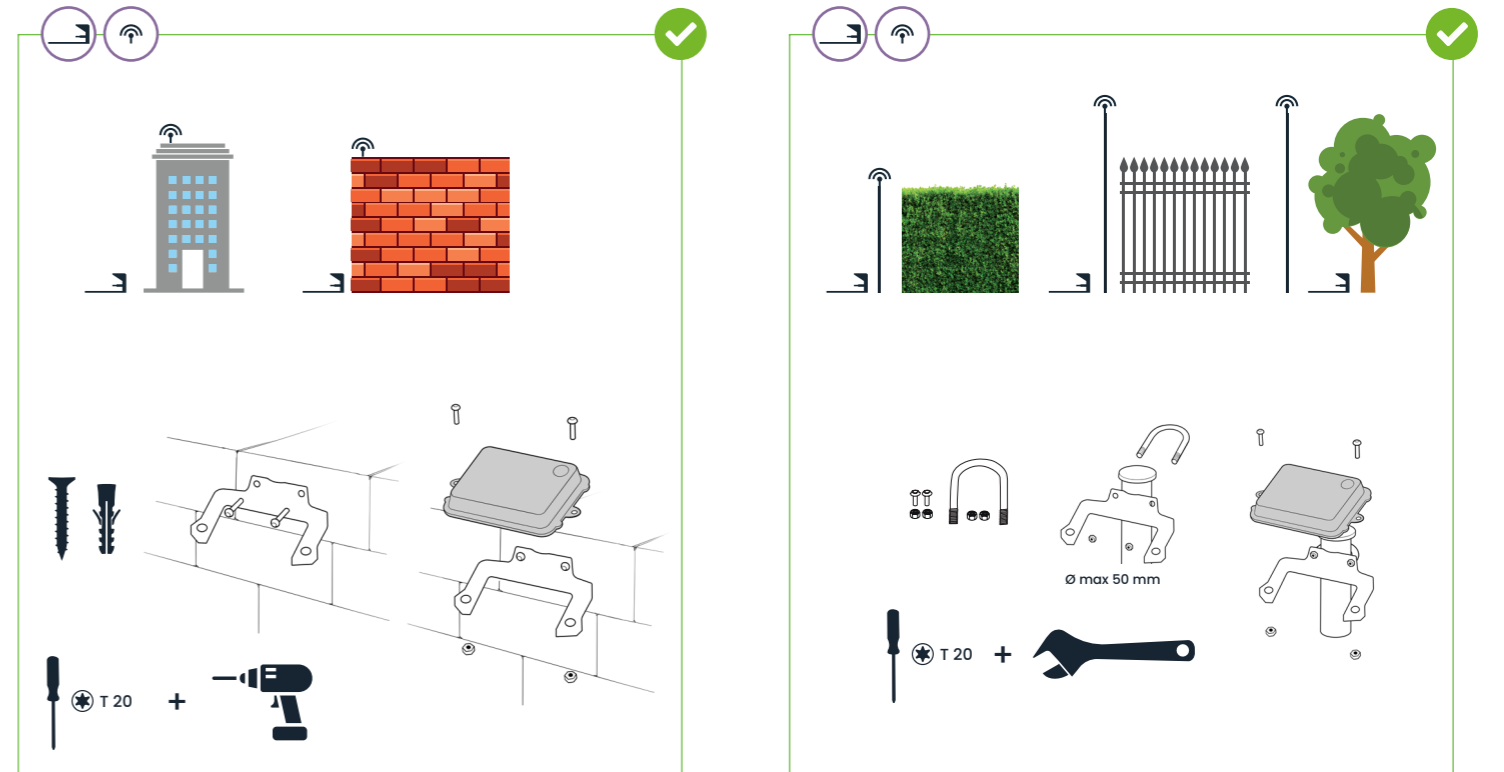
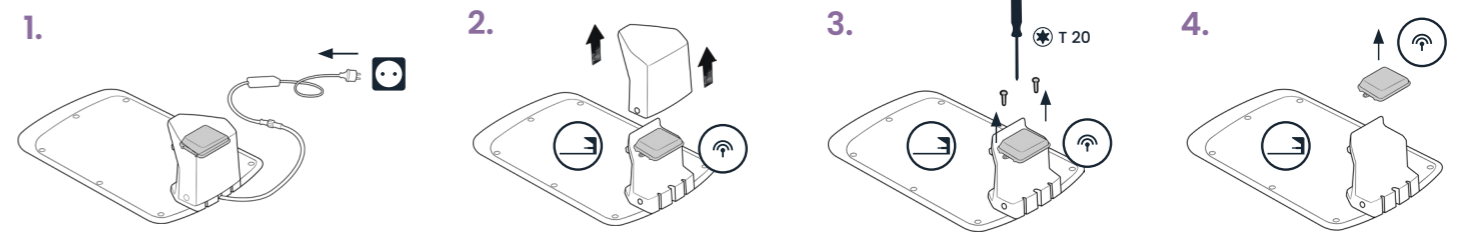


4. Initialization



**B**

## B



OPTIONAL  
additional reference station power supply unit  
CODE: 118204158/0 (EU plug) - 118204161/0 (UK plug)

## STIGA.GO App

3. Initialization

