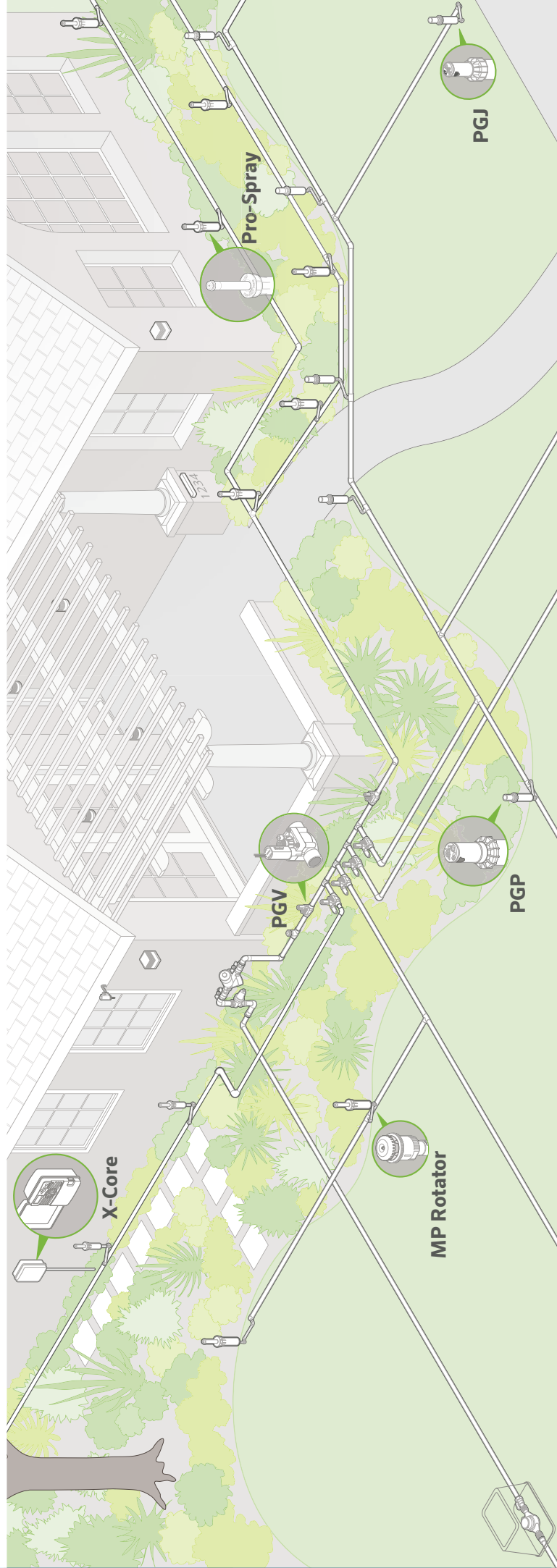
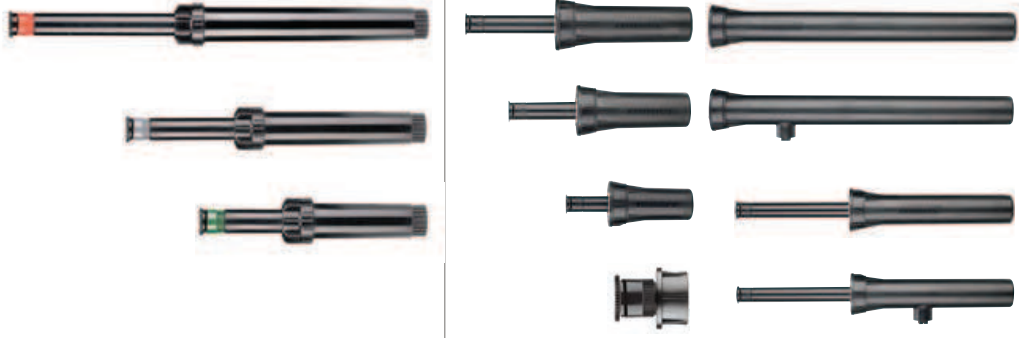


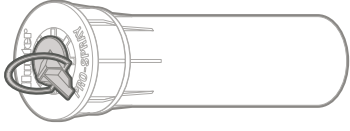
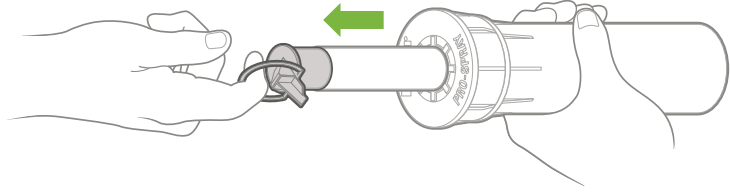
Hunter®



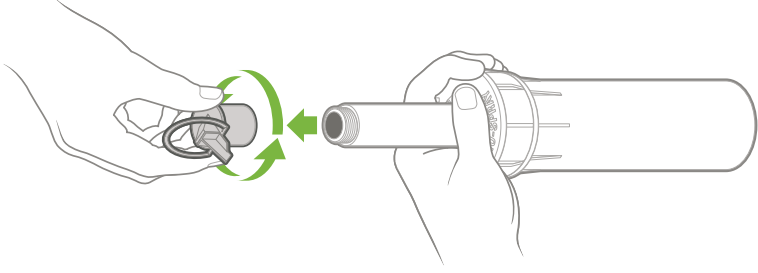
PS ULTRA / PRO-SPRAY



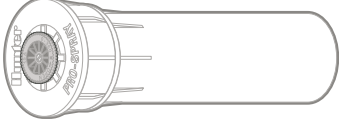
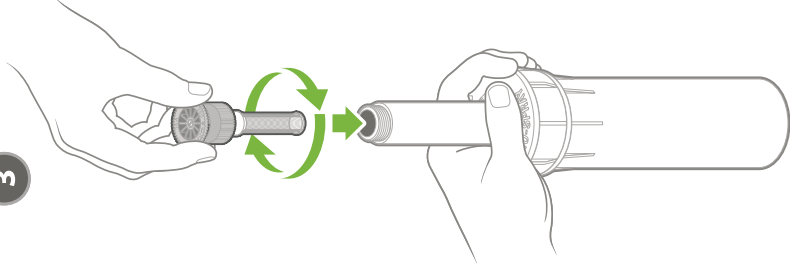
1



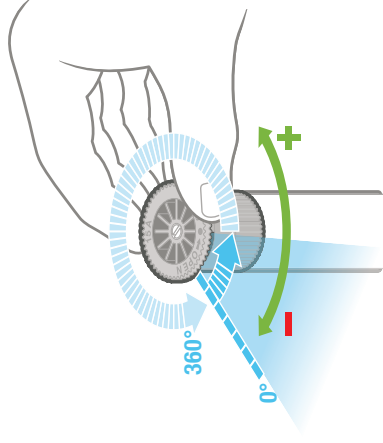
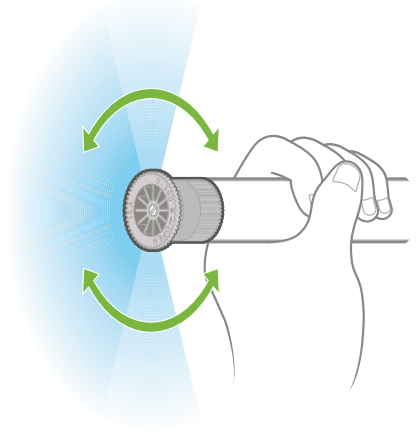
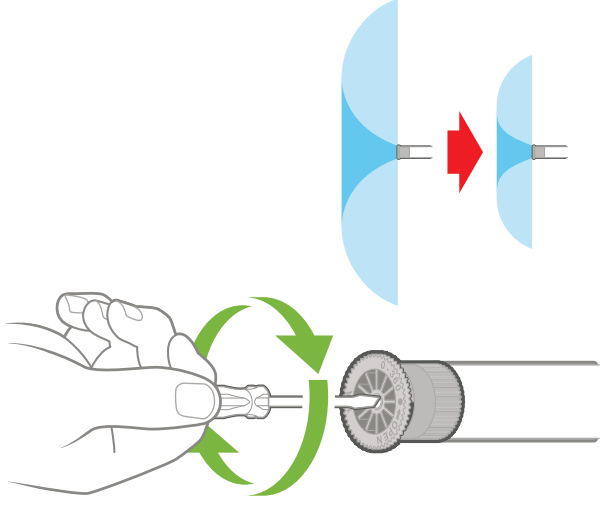
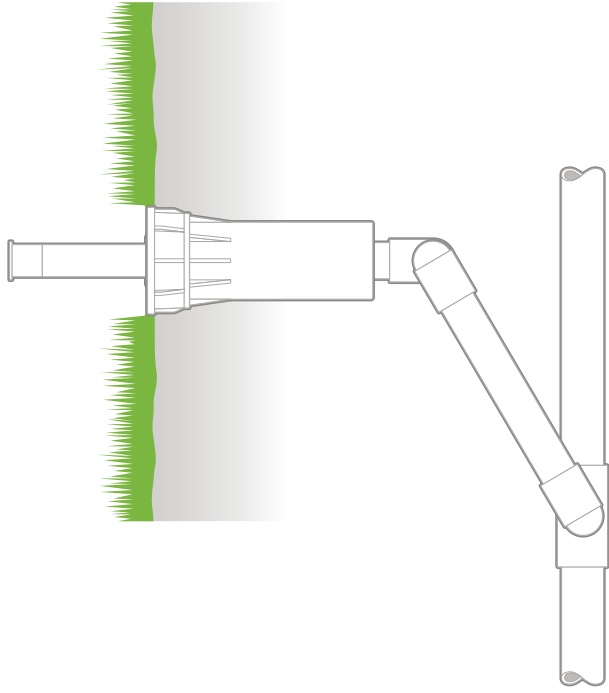
2



3



X-CORE PGV PGJ PGP MP ROTATOR **PS ULTRA / PRO-SPRAY**





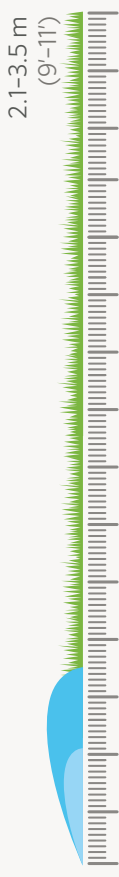
10A



1.0-2.5 Bar
100-250 kPa
20-40 PSI



0.6-8.3 l/m
0.2-2.3 GPM



12A



1.0-2.5 Bar
100-250 kPa
20-40 PSI



0.8-10.7 l/m
0.3-3.0 GPM



15A



1.0-2.5 Bar
100-250 kPa
20-40 PSI



1.2-15.8 l/m
0.4-4.7 GPM



17A



1.0-2.5 Bar
100-250 kPa
20-40 PSI



1.5-20.4 l/m
0.5-5.6 GPM

