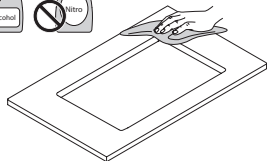
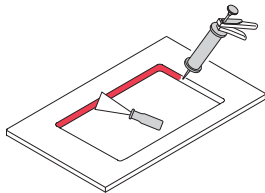




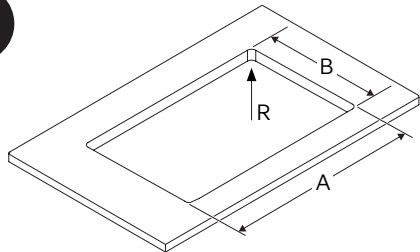
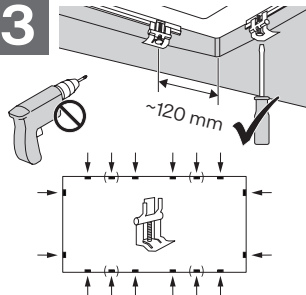
1



2



3



Model	A	B	R
610-41 TL	483 ⁺² / ₀	483 ⁺² / ₀	0-10
620-34-34/80 TL	783 ⁺² / ₀	483 ⁺² / ₀	0-10
620-34-34/86 TL	843 ⁺² / ₀	483 ⁺² / ₀	0-10
660-34-17 TL	603 ⁺² / ₀	473 ⁺² / ₀	0-10
611-62/50	600 ⁺² / ₀	480 ⁺² / ₀	0-10
611-86/50	840 ⁺² / ₀	480 ⁺² / ₀	0-10
651-100/50	980 ⁺² / ₀	480 ⁺² / ₀	0-10
611-78/50 LB	760 ⁺² / ₀	480 ⁺² / ₀	0-10
611-86/50 LB	840 ⁺² / ₀	480 ⁺² / ₀	0-10
611-78/50	760 ⁺² / ₀	480 ⁺² / ₀	0-10
611-100/50 LB	980 ⁺² / ₀	480 ⁺² / ₀	0-10
621-116/50	1140 ⁺² / ₀	480 ⁺² / ₀	0-10

